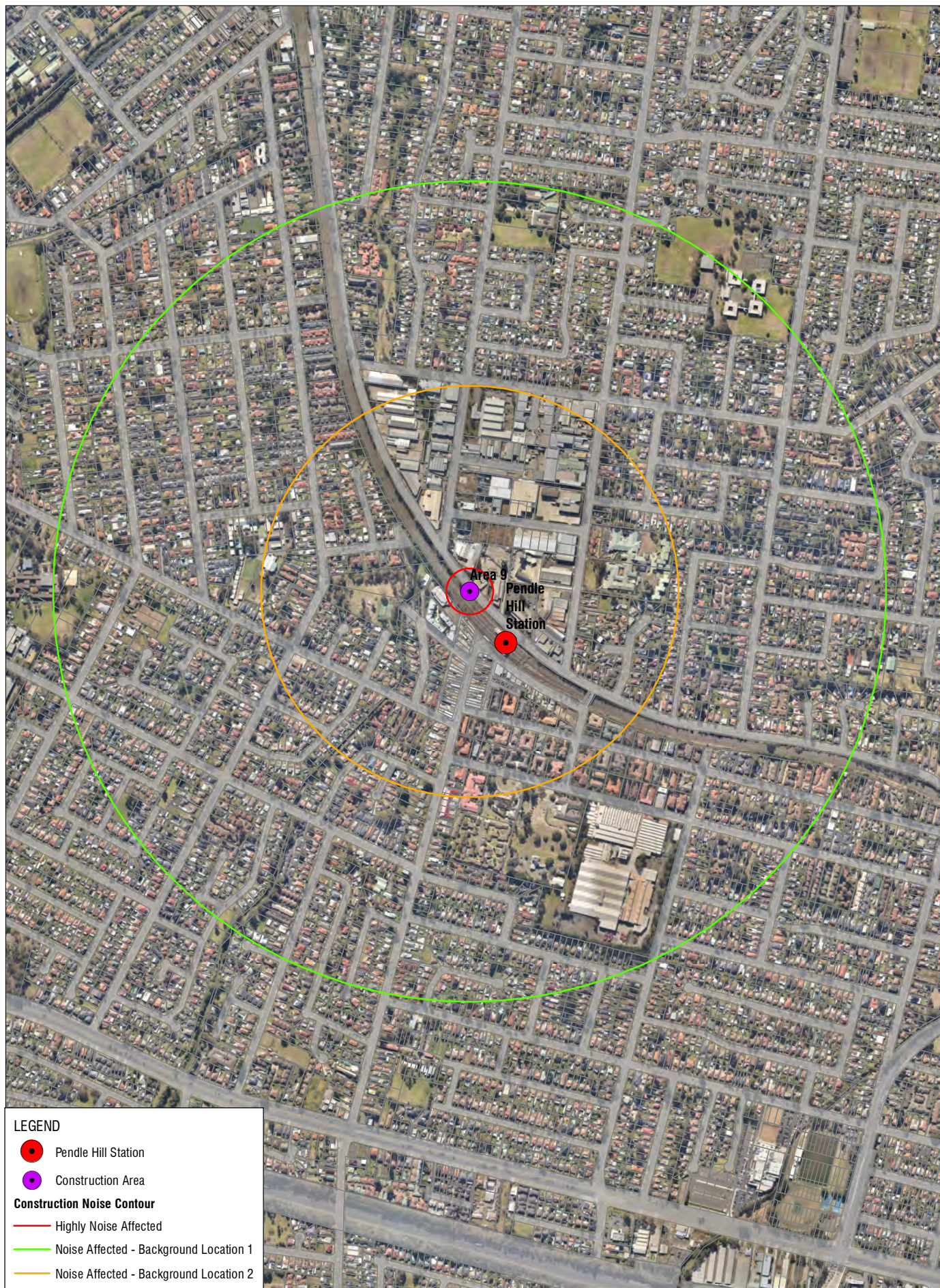


C:\Data\610\_14617\Pendle Hill\Figures\ArcGIS\SLR\610\_14617\_Pendle Hill\ConstructionNoiseContours\_APPC\_01\_Area9.mxd



#### LEGEND

- Pendle Hill Station
- Construction Area

#### Construction Noise Contour

- Highly Noise Affected
- Noise Affected - Background Location 1
- Noise Affected - Background Location 2



10 KINGS ROAD  
NEW LAMBTON  
NEW SOUTH WALES 2305  
AUSTRALIA  
T: 61 2 4037 3200  
F: 61 2 4037 3201  
www.slrconsulting.com

The content contained within this document may be based on third party data.  
SLR Consulting Australia Pty Ltd does not guarantee the accuracy of such information.

Project No.: 610.14617

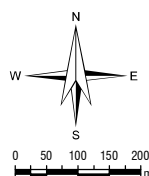
Date: 11/11/2014

Drawn by: KC

Scale: 1:12,000

Sheet Size: A4

Projection: GDA 1994 MGA Zone 56



Transport for NSW

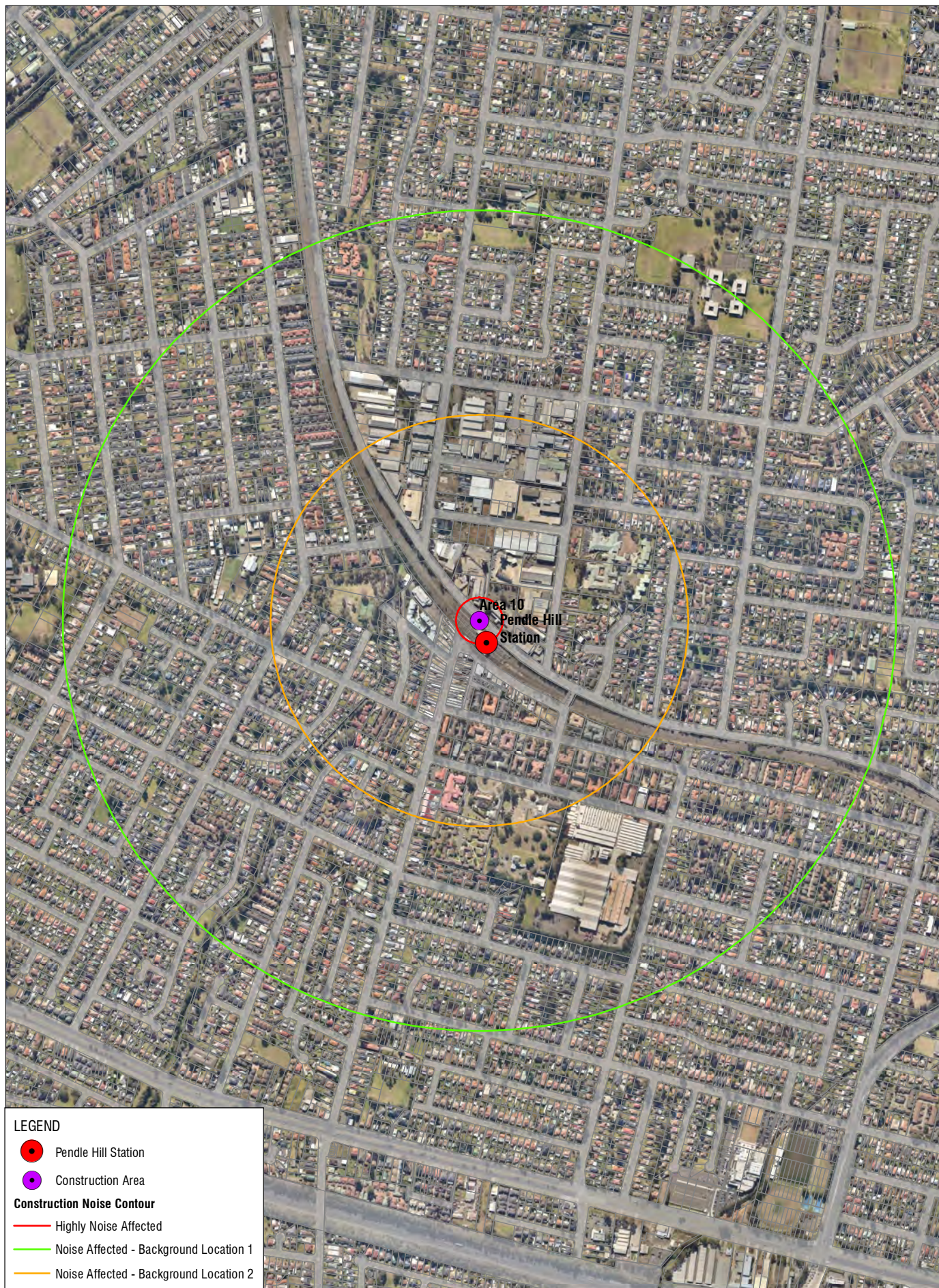
Pendle Hill Station

### Construction Noise Contours Area 9

APPENDIX C



C:\Data\610\_14617 Pendle Hill\Figures\ArcGIS\SLR\610\_14617\_Pendle Hill\ConstructionNoiseContours\_APPC\_01\_Area 10.mxd



#### LEGEND

- Pendle Hill Station
- Construction Area

#### Construction Noise Contour

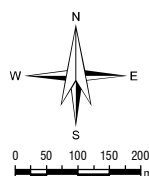
- Highly Noise Affected
- Noise Affected - Background Location 1
- Noise Affected - Background Location 2



10 KINGS ROAD  
NEW LAMBTON  
NEW SOUTH WALES 2305  
AUSTRALIA  
T: 61 2 4037 3200  
F: 61 2 4037 3201  
www.slrconsulting.com

The content contained within this document may be based on third party data.  
SLR Consulting Australia Pty Ltd does not guarantee the accuracy of such information.

Project No.:	610.14617
Date:	11/11/2014
Drawn by:	KC
Scale:	1:12,000
Sheet Size:	A4
Projection:	GDA 1994 MGA Zone 56



Transport for NSW

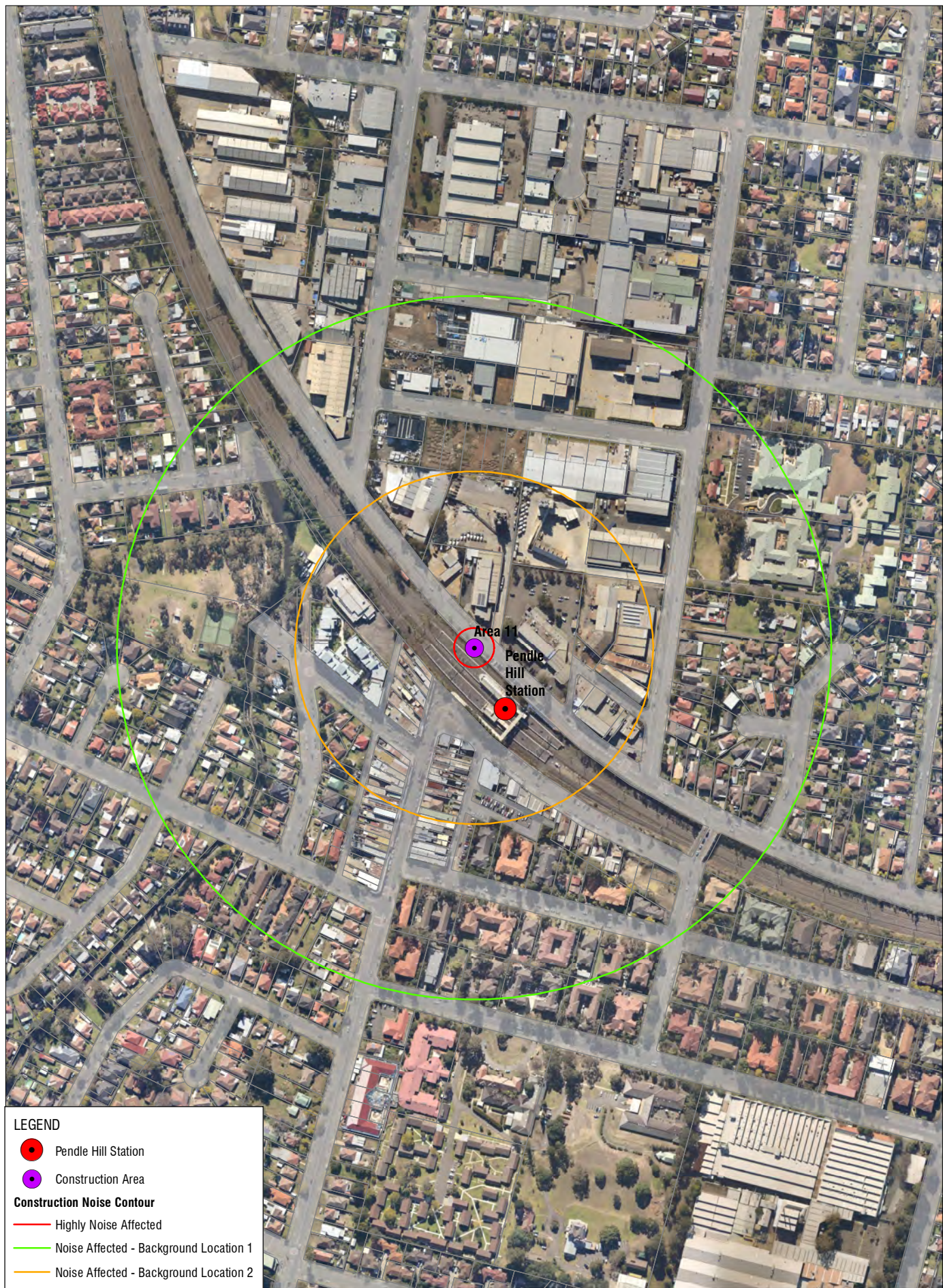
Pendle Hill Station

### Construction Noise Contours Area 10

APPENDIX C



C:\Data\610\_14617 Pendle Hill\Figures\ArcGIS\SLR\610\_14617\_Pendle Hill\ConstructionNoiseContours\_APPC\_01\_Area11.mxd



#### LEGEND

- Pendle Hill Station
- Construction Area

#### Construction Noise Contour

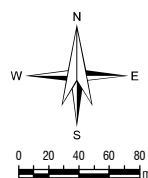
- Highly Noise Affected
- Noise Affected - Background Location 1
- Noise Affected - Background Location 2



10 KINGS ROAD  
NEW LAMBTON  
NEW SOUTH WALES 2305  
AUSTRALIA  
T: 61 2 4037 3200  
F: 61 2 4037 3201  
www.slrconsulting.com

The content contained within this document may be based on third party data.  
SLR Consulting Australia Pty Ltd does not guarantee the accuracy of such information.

Project No.: 610.14617  
Date: 11/11/2014  
Drawn by: KC  
Scale: 1:5,000  
Sheet Size: A4  
Projection: GDA 1994 MGA Zone 56



Transport for NSW

Pendle Hill Station

#### Construction Noise Contours Area 11

APPENDIX C



C:\Data\610\_14617\Pendle Hill\Figures\GIS\SLR\610\_14617\_Pendle Hill\ConstructionNoiseContours\_APPC\_01\_Area12.mxd



#### LEGEND

- Pendle Hill Station
- Construction Area

#### Construction Noise Contour

- Highly Noise Affected
- Noise Affected - Background Location 1
- Noise Affected - Background Location 2



10 KINGS ROAD  
NEW LAMBTON  
NEW SOUTH WALES 2305  
AUSTRALIA  
T: 61 2 4037 3200  
F: 61 2 4037 3201  
www.slrconsulting.com

The content contained within this document may be based on third party data.  
SLR Consulting Australia Pty Ltd does not guarantee the accuracy of such information.

Project No.: 610.14617

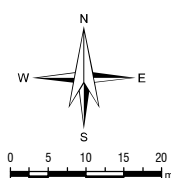
Date: 11/11/2014

Drawn by: KC

Scale: 1:1,000

Sheet Size: A4

Projection: GDA 1994 MGA Zone 56



Transport for NSW

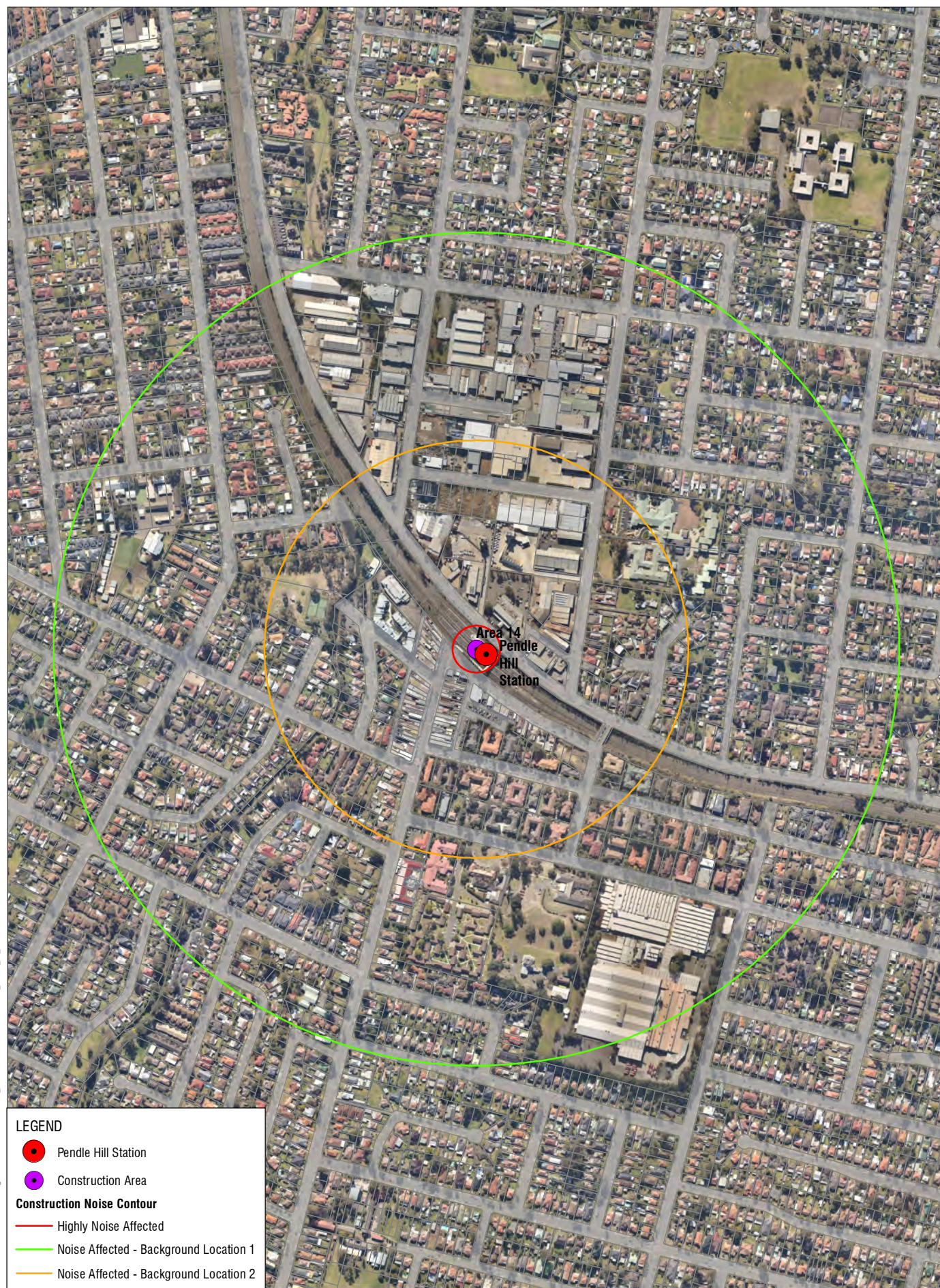
Pendle Hill Station

#### Construction Noise Contours Area 12

APPENDIX C

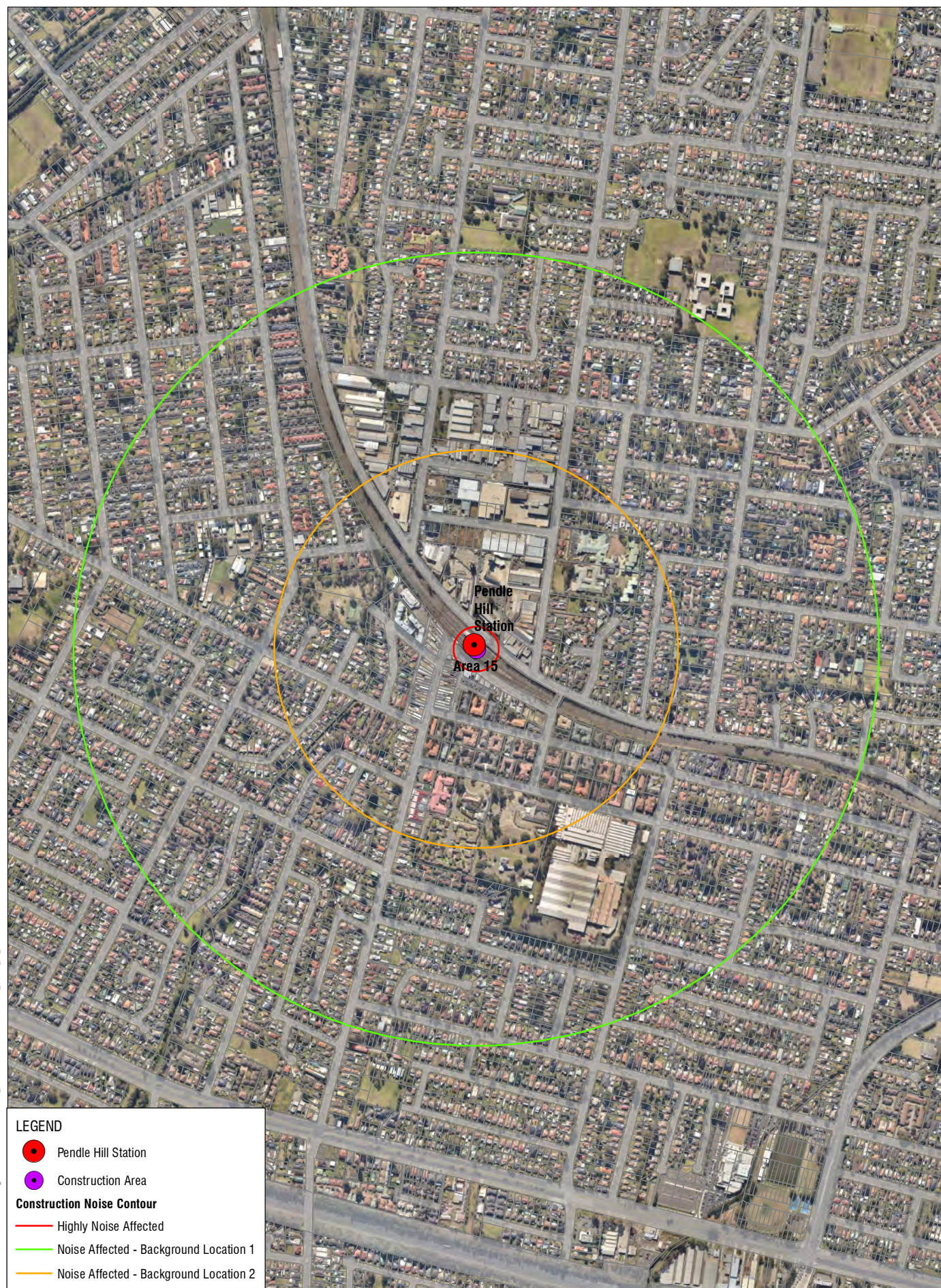


C:\Data\610\_14617\Pendle Hill\Figures\ArcGIS\SLR\610\_14617\_Pendle Hill\ConstructionNoiseContours\_APPC\_01\_Area 14.mxd





C:\Data\610\_14617\Pendle Hill\Figures\ArcGIS\SLR\610\_14617\_Pendle Hill\ConstructionNoiseContours\_APPC\_01\_Area 15.mxd



#### LEGEND

- Pendle Hill Station
- Construction Area

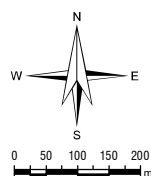
#### Construction Noise Contour

- Highly Noise Affected
- Noise Affected - Background Location 1
- Noise Affected - Background Location 2



The content contained within this document may be based on third party data. SLR Consulting Australia Pty Ltd does not guarantee the accuracy of such information.

Project No.:	610.14617
Date:	11/11/2014
Drawn by:	KC
Scale:	1:12,000
Sheet Size:	A4
Projection:	GDA 1994 MGA Zone 56



Transport for NSW

Pendle Hill Station

### Construction Noise Contours Area 15

APPENDIX C





#### LEGEND

- Pendle Hill Station
- Construction Area

#### Construction Noise Contour

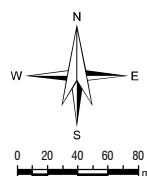
- Highly Noise Affected
- Noise Affected - Background Location 1
- Noise Affected - Background Location 2

C:\Data\610\_14617\_Pendle Hill\Figures\ArcGIS\SLR\610\_14617\_Pendle Hill\ConstructionNoiseContours\_APPC\_01\_Area16.mxd



The content contained within this document may be based on third party data.  
SLR Consulting Australia Pty Ltd does not guarantee the accuracy of such information.

Project No.:	610.14617
Date:	11/11/2014
Drawn by:	KC
Scale:	1:5,000
Sheet Size:	A4
Projection:	GDA 1994 MGA Zone 56



Transport for NSW

Pendle Hill Station

### Construction Noise Contours Area 16

APPENDIX C



C:\Data\610\_14617\Pendle Hill\Figures\ArcGIS\SLR\610\_14617\_Pendle Hill\ConstructionNoiseContours\_APPC\_01\_Area17.mxd



#### LEGEND

- Pendle Hill Station
- Construction Area

#### Construction Noise Contour

- Highly Noise Affected
- Noise Affected - Background Location 1
- Noise Affected - Background Location 2



10 KINGS ROAD  
NEW LAMBTON  
NEW SOUTH WALES 2305  
AUSTRALIA  
T: 61 2 4037 3200  
F: 61 2 4037 3201  
www.slrconsulting.com

The content contained within this document may be based on third party data.  
SLR Consulting Australia Pty Ltd does not guarantee the accuracy of such information.

Project No.: 610.14617

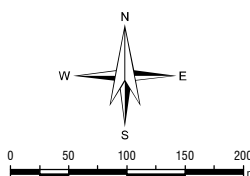
Date: 11/11/2014

Drawn by: KC

Scale: 1:6,500

Sheet Size: A4

Projection: GDA 1994 MGA Zone 56



Transport for NSW

Pendle Hill Station

#### Construction Noise Contours Area 17

APPENDIX C



C:\Data\610\_14617\Pendle Hill\Figures\ArcGIS\SLR\610\_14617\_Pendle Hill\ConstructionNoiseContours\_APPC\_01\_Area 18.mxd



#### LEGEND

- Pendle Hill Station
- Construction Area

#### Construction Noise Contour

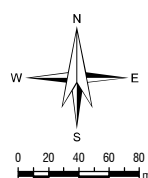
- Highly Noise Affected
- Noise Affected - Background Location 1
- Noise Affected - Background Location 2



10 KINGS ROAD  
NEW LAMBTON  
NEW SOUTH WALES 2305  
AUSTRALIA  
T: 61 2 4037 3200  
F: 61 2 4037 3201  
www.slrconsulting.com

The content contained within this document may be based on third party data.  
SLR Consulting Australia Pty Ltd does not guarantee the accuracy of such information.

Project No.:	610.14617
Date:	11/11/2014
Drawn by:	KC
Scale:	1:5,000
Sheet Size:	A4
Projection:	GDA 1994 MGA Zone 56



Transport for NSW

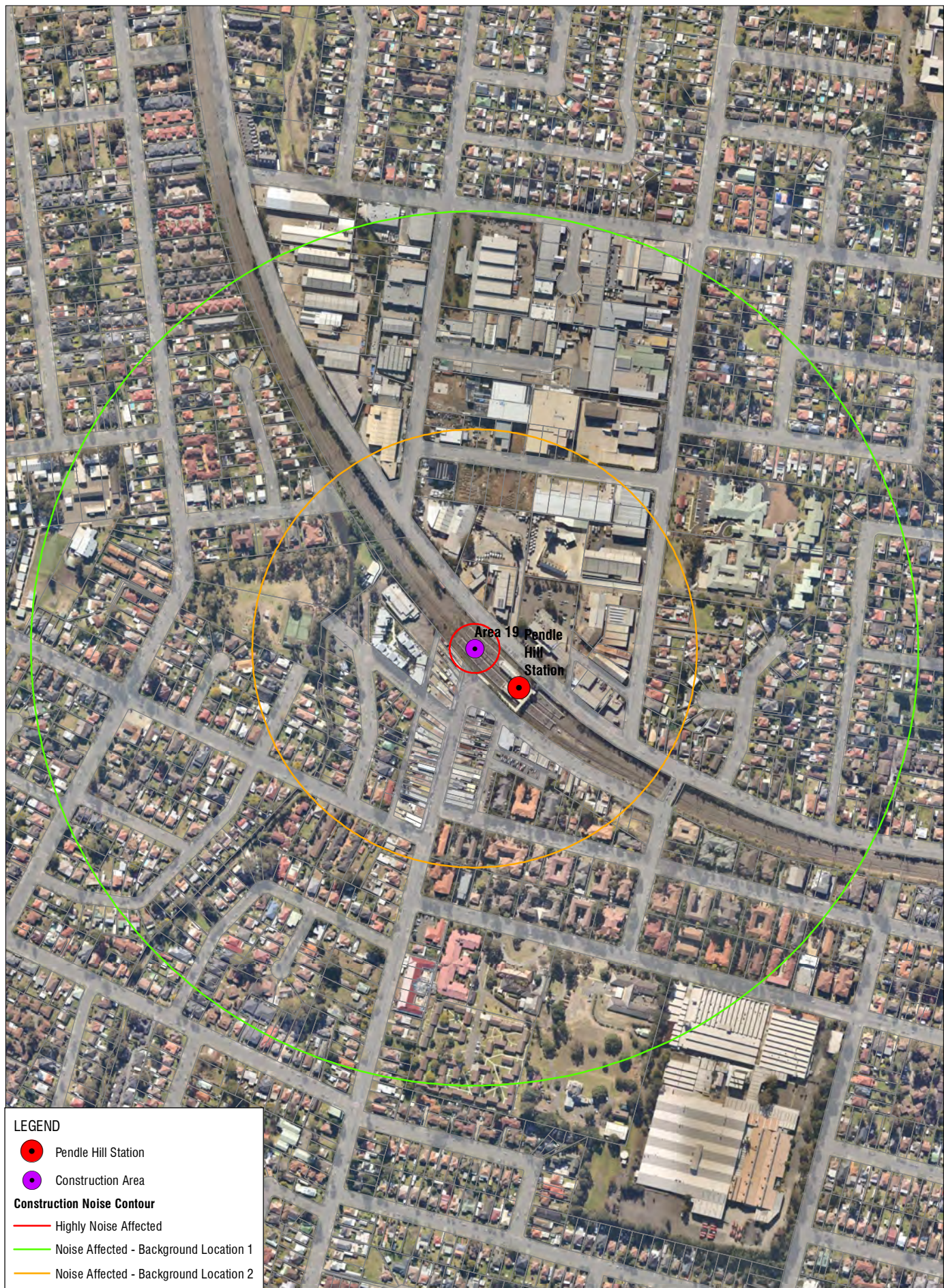
Pendle Hill Station

### Construction Noise Contours Area 18

APPENDIX C



C:\Data\610\_14617\Pendle Hill\Figures\Area 19\SLR\610\_14617\_Pendle Hill\ConstructionNoiseContours\_APPC\_01\_Area 19.mxd



#### LEGEND

- Pendle Hill Station
- Construction Area

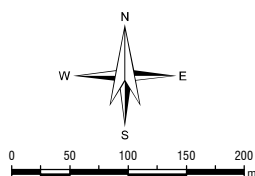
#### Construction Noise Contour

- Highly Noise Affected
- Noise Affected - Background Location 1
- Noise Affected - Background Location 2



The content contained within this document may be based on third party data.  
SLR Consulting Australia Pty Ltd does not guarantee the accuracy of such information.

Project No.:	610.14617
Date:	11/11/2014
Drawn by:	KC
Scale:	1:6,500
Sheet Size:	A4
Projection:	GDA 1994 MGA Zone 56



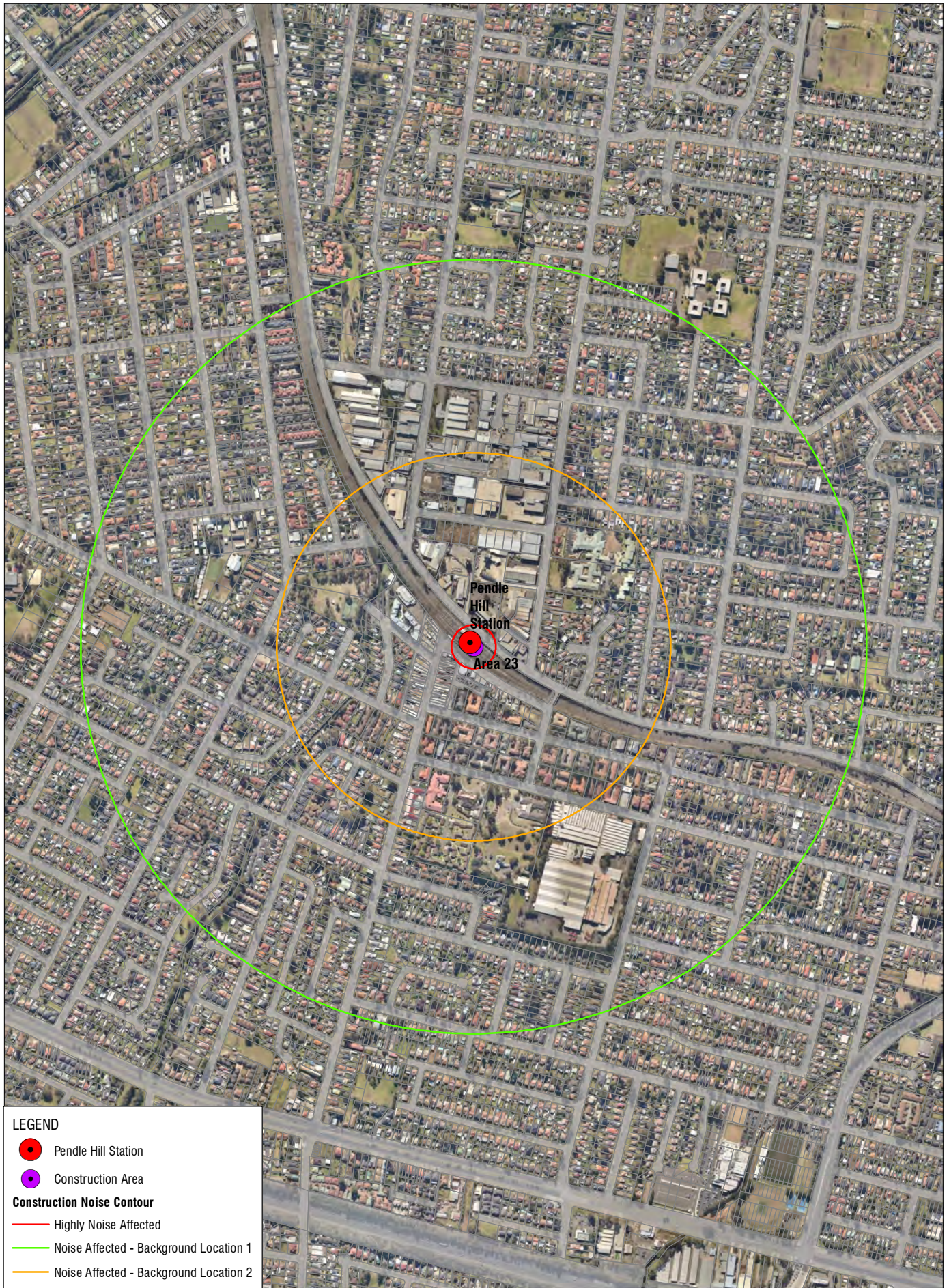
Transport for NSW

Pendle Hill Station

### Construction Noise Contours Area 19

APPENDIX C





#### LEGEND

- Pendle Hill Station
- Construction Area

#### Construction Noise Contour

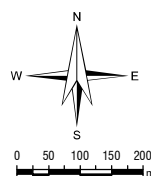
- Highly Noise Affected
- Noise Affected - Background Location 1
- Noise Affected - Background Location 2

C:\Data\610\_14617\_Pendle Hill\Figures\ArcGIS\SLR\610\_14617\_Pendle Hill\ConstructionNoiseContours\_APPC\_01\_Area23.mxd



The content contained within this document may be based on third party data.  
SLR Consulting Australia Pty Ltd does not guarantee the accuracy of such information.

Project No.:	610.14617
Date:	11/11/2014
Drawn by:	KC
Scale:	1:12,000
Sheet Size:	A4
Projection:	GDA 1994 MGA Zone 56



Transport for NSW

Pendle Hill Station

### Construction Noise Contours Area 23

APPENDIX C





#### LEGEND

- Pendle Hill Station
- Construction Area

#### Construction Noise Contour

- Highly Noise Affected
- Noise Affected - Background Location 1
- Noise Affected - Background Location 2

C:\Data\610\_14617\_Pendle Hill\Figures\ArcGIS\SLR\610\_14617\_Pendle Hill\ConstructionNoiseContours\_APPC\_01\_Area24.mxd



10 KINGS ROAD  
NEW LAMBTON  
NEW SOUTH WALES 2305  
AUSTRALIA  
T: 61 2 4037 3200  
F: 61 2 4037 3201  
www.slrconsulting.com

The content contained within this document may be based on third party data.  
SLR Consulting Australia Pty Ltd does not guarantee the accuracy of such information.

Project No.: 610.14617

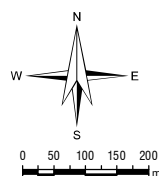
Date: 11/11/2014

Drawn by: KC

Scale: 1:12,000

Sheet Size: A4

Projection: GDA 1994 MGA Zone 56



Transport for NSW

Pendle Hill Station

### Construction Noise Contours Area 24

APPENDIX C





#### LEGEND

- Pendle Hill Station
- Construction Area

#### Construction Noise Contour

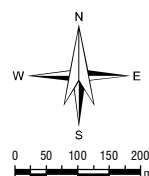
- Highly Noise Affected
- Noise Affected - Background Location 1
- Noise Affected - Background Location 2

C:\Data\610\_14617\_Pendle Hill\Figures\ArcGIS\SLR\610\_14617\_Pendle Hill\ConstructionNoiseContours\_APPC\_01\_Area25.mxd



The content contained within this document may be based on third party data.  
SLR Consulting Australia Pty Ltd does not guarantee the accuracy of such information.

Project No.:	610.14617
Date:	11/11/2014
Drawn by:	KC
Scale:	1:12,000
Sheet Size:	A4
Projection:	GDA 1994 MGA Zone 56



Transport for NSW

Pendle Hill Station

### Construction Noise Contours Area 25

APPENDIX C





#### LEGEND

- Pendle Hill Station
- Construction Area

#### Construction Noise Contour

- Highly Noise Affected
- Noise Affected - Background Location 1
- Noise Affected - Background Location 2

C:\Data\610\_14617\_Pendle Hill\Figures\ArcGIS\SLR\610\_14617\_Pendle Hill\ConstructionNoiseContours\_APPC\_01\_Area26.mxd



10 KINGS ROAD  
NEW LAMBTON  
NEW SOUTH WALES 2305  
AUSTRALIA  
T: 61 2 4037 3200  
F: 61 2 4037 3201  
www.slrconsulting.com

The content contained within this document may be based on third party data.  
SLR Consulting Australia Pty Ltd does not guarantee the accuracy of such information.

Project No.: 610.14617

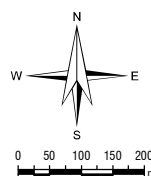
Date: 11/11/2014

Drawn by: KC

Scale: 1:12,000

Sheet Size: A4

Projection: GDA 1994 MGA Zone 56



Transport for NSW

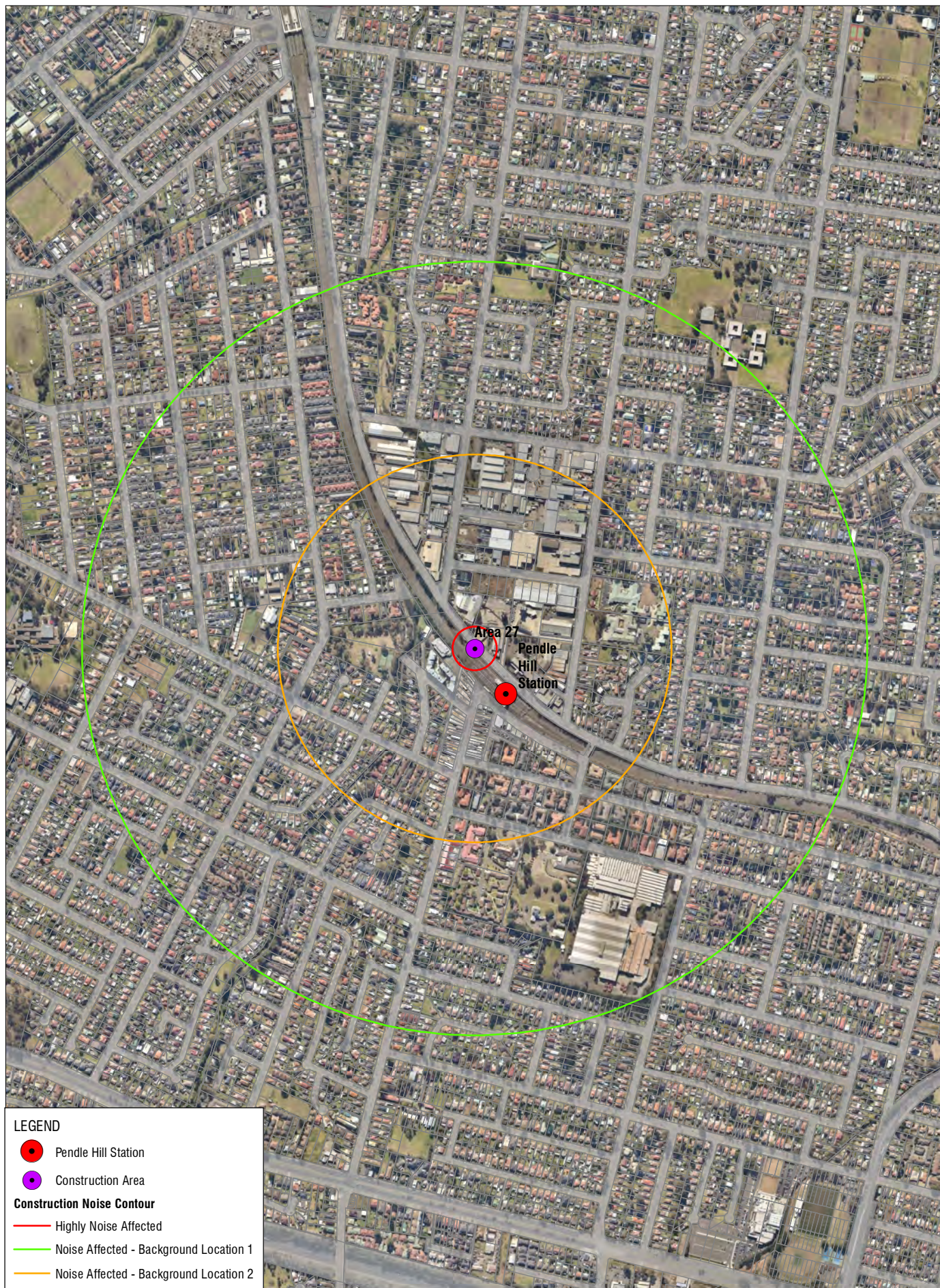
Pendle Hill Station

### Construction Noise Contours Area 26

APPENDIX C



C:\Data\610\_14617\Pendle Hill\Figures\ArcGIS\SLR\610\_14617\_Pendle Hill\ConstructionNoiseContours\_APPC\_01\_Area27.mxd



#### LEGEND

- Pendle Hill Station
- Construction Area

#### Construction Noise Contour

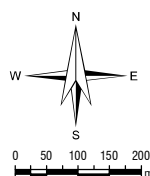
- Highly Noise Affected
- Noise Affected - Background Location 1
- Noise Affected - Background Location 2



10 KINGS ROAD  
NEW LAMBTON  
NEW SOUTH WALES 2305  
AUSTRALIA  
T: 61 2 4037 3200  
F: 61 2 4037 3201  
www.slrconsulting.com

The content contained within this document may be based on third party data.  
SLR Consulting Australia Pty Ltd does not guarantee the accuracy of such information.

Project No.:	610.14617
Date:	11/11/2014
Drawn by:	KC
Scale:	1:12,000
Sheet Size:	A4
Projection:	GDA 1994 MGA Zone 56



Transport for NSW

Pendle Hill Station

### Construction Noise Contours Area 27

APPENDIX C

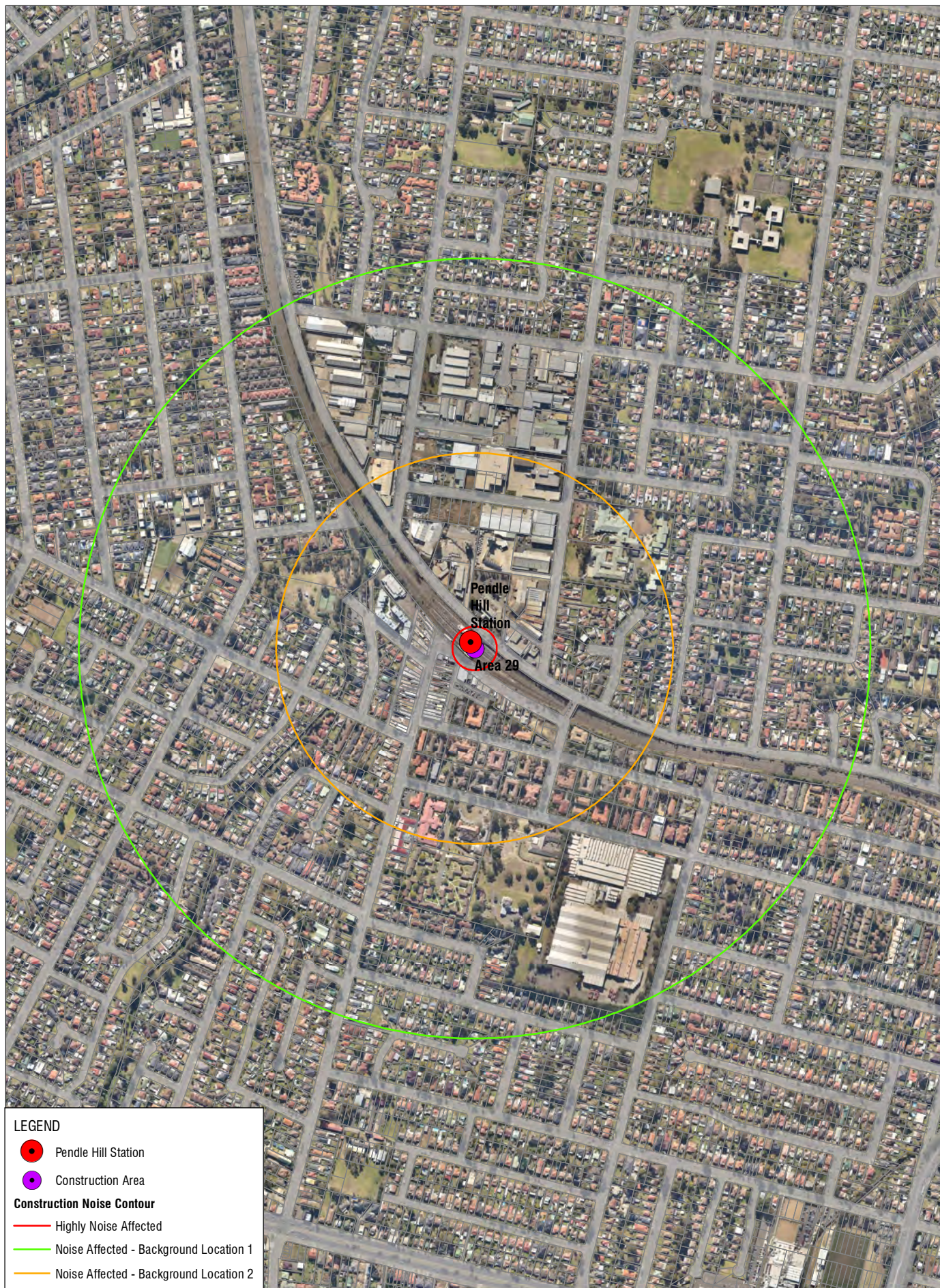


C:\Data\610\_14617\Pendle Hill\Figures\ArcGIS\SLR\610\_14617\_Pendle Hill\ConstructionNoiseContours\_APPC\_01\_Area28.mxd





C:\Data\610\_14617\Pendle Hill\Figures\ArcGIS\SLR\610\_14617\_Pendle Hill\ConstructionNoiseContours\_APPC\_01\_Area29.mxd



#### LEGEND

- Pendle Hill Station
- Construction Area

#### Construction Noise Contour

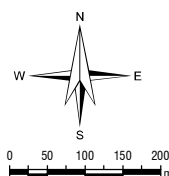
- Highly Noise Affected
- Noise Affected - Background Location 1
- Noise Affected - Background Location 2



10 KINGS ROAD  
NEW LAMBTON  
NEW SOUTH WALES 2305  
AUSTRALIA  
T: 61 2 4037 3200  
F: 61 2 4037 3201  
www.slrconsulting.com

The content contained within this document may be based on third party data.  
SLR Consulting Australia Pty Ltd does not guarantee the accuracy of such information.

Project No.:	610.14617
Date:	11/11/2014
Drawn by:	KC
Scale:	1:10,000
Sheet Size:	A4
Projection:	GDA 1994 MGA Zone 56



Transport for NSW

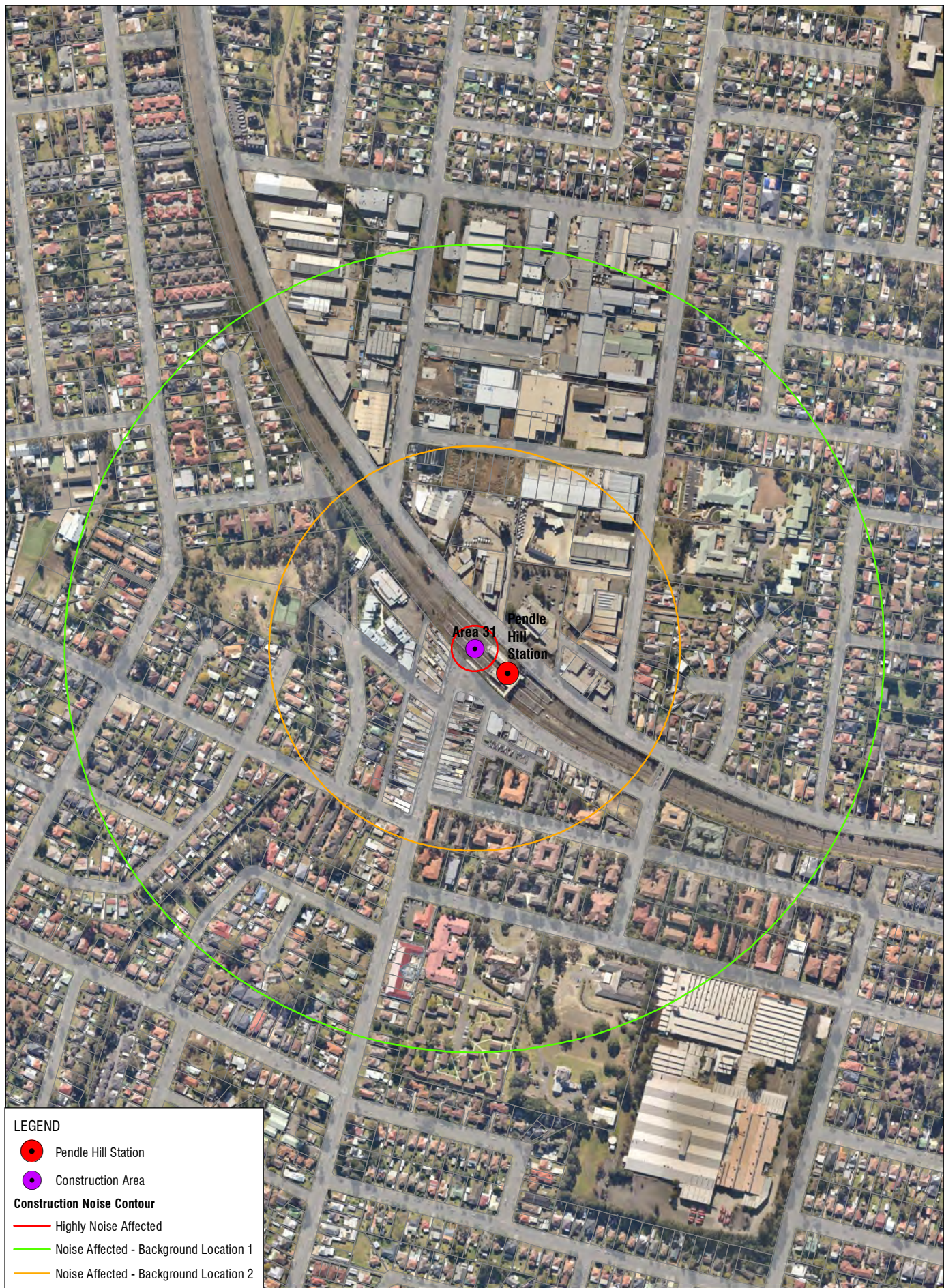
Pendle Hill Station

#### Construction Noise Contours Area 29

APPENDIX C



C:\Data\610\_14617\Pendle Hill\Figures\ArcGIS\SLR\610\_14617\_Pendle Hill\Figures\NoiseContours\_APPC\_01\_Area31.mxd



#### LEGEND

- Pendle Hill Station
- Construction Area

#### Construction Noise Contour

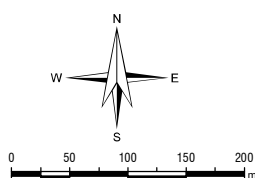
- Highly Noise Affected
- Noise Affected - Background Location 1
- Noise Affected - Background Location 2



10 KINGS ROAD  
NEW LAMBTON  
NEW SOUTH WALES 2305  
AUSTRALIA  
T: 61 2 4037 3200  
F: 61 2 4037 3201  
www.slrconsulting.com

The content contained within this document may be based on third party data.  
SLR Consulting Australia Pty Ltd does not guarantee the accuracy of such information.

Project No.: 610.14617  
Date: 11/11/2014  
Drawn by: KC  
Scale: 1:6,500  
Sheet Size: A4  
Projection: GDA 1994 MGA Zone 56



Transport for NSW

Pendle Hill Station

#### Construction Noise Contours Area 31

APPENDIX C





# LEGEND

- Pendle Hill Station
- Construction Area

## Construction Noise Contour

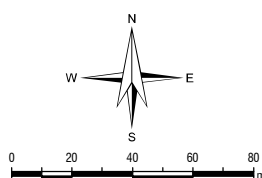
- Highly Noise Affected
- Noise Affected - Background Location 1
- Noise Affected - Background Location 2



10 KINGS ROAD  
NEW LAMBTON  
NEW SOUTH WALES 2305  
AUSTRALIA  
T: 61 2 4037 3200  
F: 61 2 4037 3201  
www.slrconsulting.com

The content contained within this document may be based on third party data.  
SLR Consulting Australia Pty Ltd does not guarantee the accuracy of such information.

Project No.: 610.14617  
Date: 11/11/2014  
Drawn by: KC  
Scale: 1:2,500  
Sheet Size: A4  
Projection: GDA 1994 MGA Zone 56



Transport for NSW

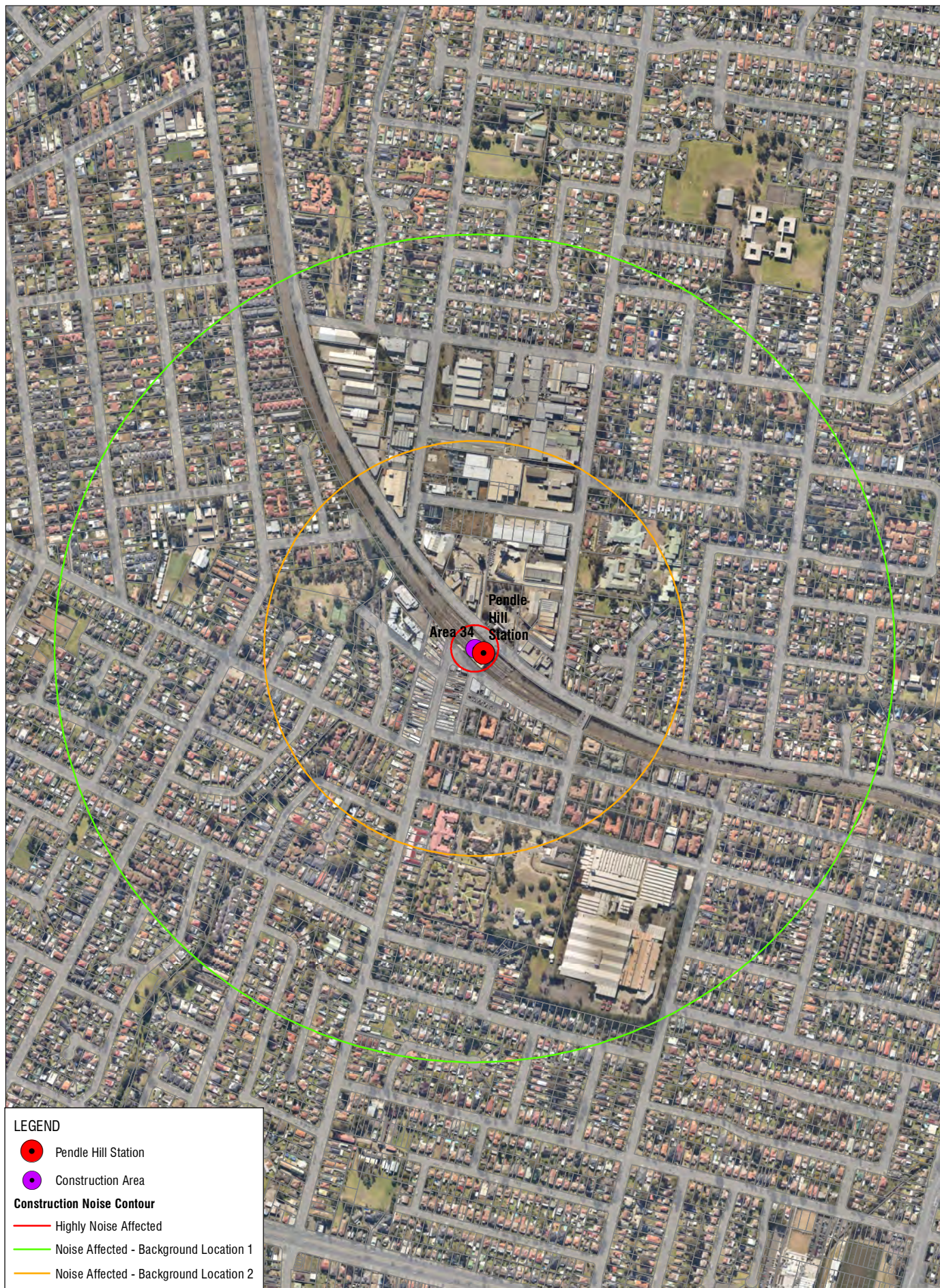
Pendle Hill Station

## Construction Noise Contours Area 33

APPENDIX C



C:\Data\610\_14617 Pendle Hill\Figures\ArcGIS\SLR\610\_14617\_Pendle Hill\ConstructionNoiseContours\_APPC\_01\_Area34.mxd



#### LEGEND

- Pendle Hill Station
- Construction Area

#### Construction Noise Contour

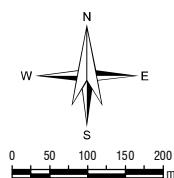
- Highly Noise Affected
- Noise Affected - Background Location 1
- Noise Affected - Background Location 2



10 KINGS ROAD  
NEW LAMBTON  
NEW SOUTH WALES 2305  
AUSTRALIA  
T: 61 2 4037 3200  
F: 61 2 4037 3201  
www.slrconsulting.com

The content contained within this document may be based on third party data.  
SLR Consulting Australia Pty Ltd does not guarantee the accuracy of such information.

Project No.:	610.14617
Date:	11/11/2014
Drawn by:	KC
Scale:	1:10,000
Sheet Size:	A4
Projection:	GDA 1994 MGA Zone 56



Transport for NSW

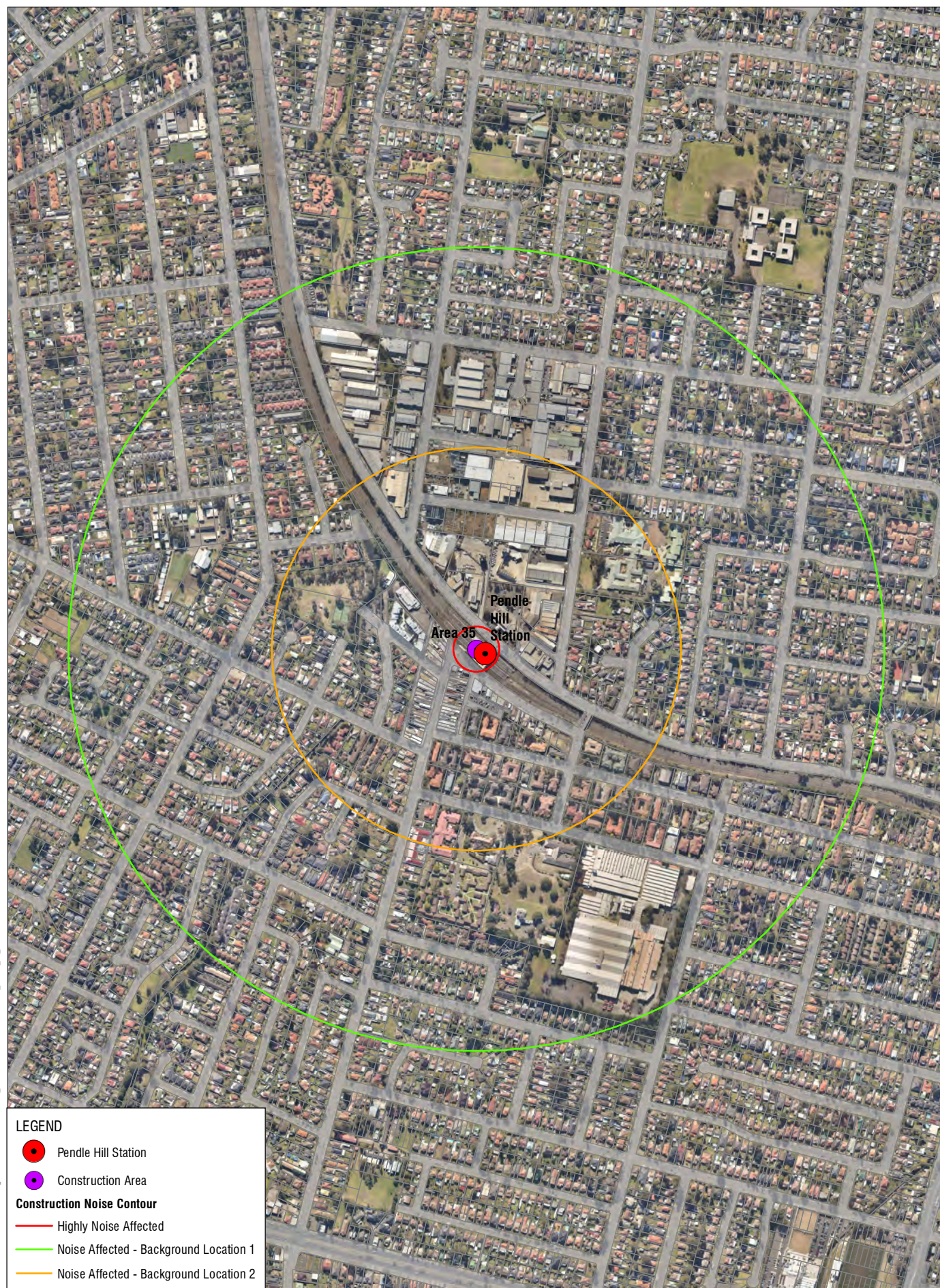
Pendle Hill Station

### Construction Noise Contours Area 34

APPENDIX C



C:\Data\610\_14617 Pendle Hill\Figures\ArcGIS\SLR\610\_14617\_Pendle Hill\ConstructionNoiseContours\_APPC\_01\_Area35.mxd



#### LEGEND

- Pendle Hill Station
- Construction Area

#### Construction Noise Contour

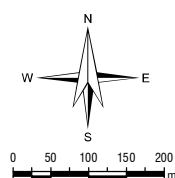
- Highly Noise Affected
- Noise Affected - Background Location 1
- Noise Affected - Background Location 2



10 KINGS ROAD  
NEW LAMBTON  
NEW SOUTH WALES 2305  
AUSTRALIA  
T: 61 2 4037 3200  
F: 61 2 4037 3201  
www.slrconsulting.com

The content contained within this document may be based on third party data.  
SLR Consulting Australia Pty Ltd does not guarantee the accuracy of such information.

Project No.:	610.14617
Date:	11/11/2014
Drawn by:	KC
Scale:	1:10,000
Sheet Size:	A4
Projection:	GDA 1994 MGA Zone 56



Transport for NSW

Pendle Hill Station

### Construction Noise Contours Area 35

APPENDIX C