

Fleet update

We have a transport plan for NSW that's focused on making trips faster, easier and safer. We're investing \$51.2 billion in long overdue improvements in roads and public transport to ensure infrastructure keeps pace with our needs.

Part of this investment will deliver new trains for regional, intercity and metropolitan customers. Our new trains will provide more comfortable, reliable, efficient and accessible journeys for our customers. To keep you informed, we will regularly provide an update on our new fleet projects. If you would like to subscribe to this newsletter please send an email to projects@transport.nsw.gov.au.

First new Waratah Series 2 train in service

We are celebrating a major milestone with the first two of 24 new Waratah Series 2 trains now in customer service.

The new suburban fleet is part of the More Trains, More Services program, which will boost capacity through extra services, better infrastructure and new trains for Sydney.

The new Waratah Series 2 train is fully air-conditioned and has improved technology including 98 new interior and exterior CCTV cameras to enhance security; high definition in-train screens to keep customers informed throughout their trip and upgraded interior LED lighting.

The areas where older trains are currently running will be prioritised and receive the new Waratah Series 2 trains as they come into service. Priority will be given to services on the T2 Inner West and Leppington, T3 Bankstown and T8 Airport and South Lines.

The entire Waratah Series 2 fleet trains will progressively come into service over the next six to nine months.

Would you like to know more?

Visit transport.nsw.gov.au/projects/current-projects/sydney-growth-trains



For more information call 1800 684 490

Email projects@transport.nsw.gov.au or visit transport.nsw.gov.au/projects

For urgent enquiries or complaints regarding construction activities, please call 24 hours 1800 775 465

New Intercity Fleet

The NSW Government is delivering a New Intercity Fleet to replace trains currently carrying customers from Sydney to the Central Coast, Newcastle, the Blue Mountains and the South Coast.

The new state-of-the-art trains will replace the ageing V-Sets to provide customers with a more comfortable and reliable journey.

The first trains in the New Intercity Fleet will begin customer service progressively from late next year.

Customer engagement

The train design process includes a range of engagement initiatives with staff and customers including those with specific needs such as disability groups, travellers with luggage and parents with prams, to inform and refine the design.

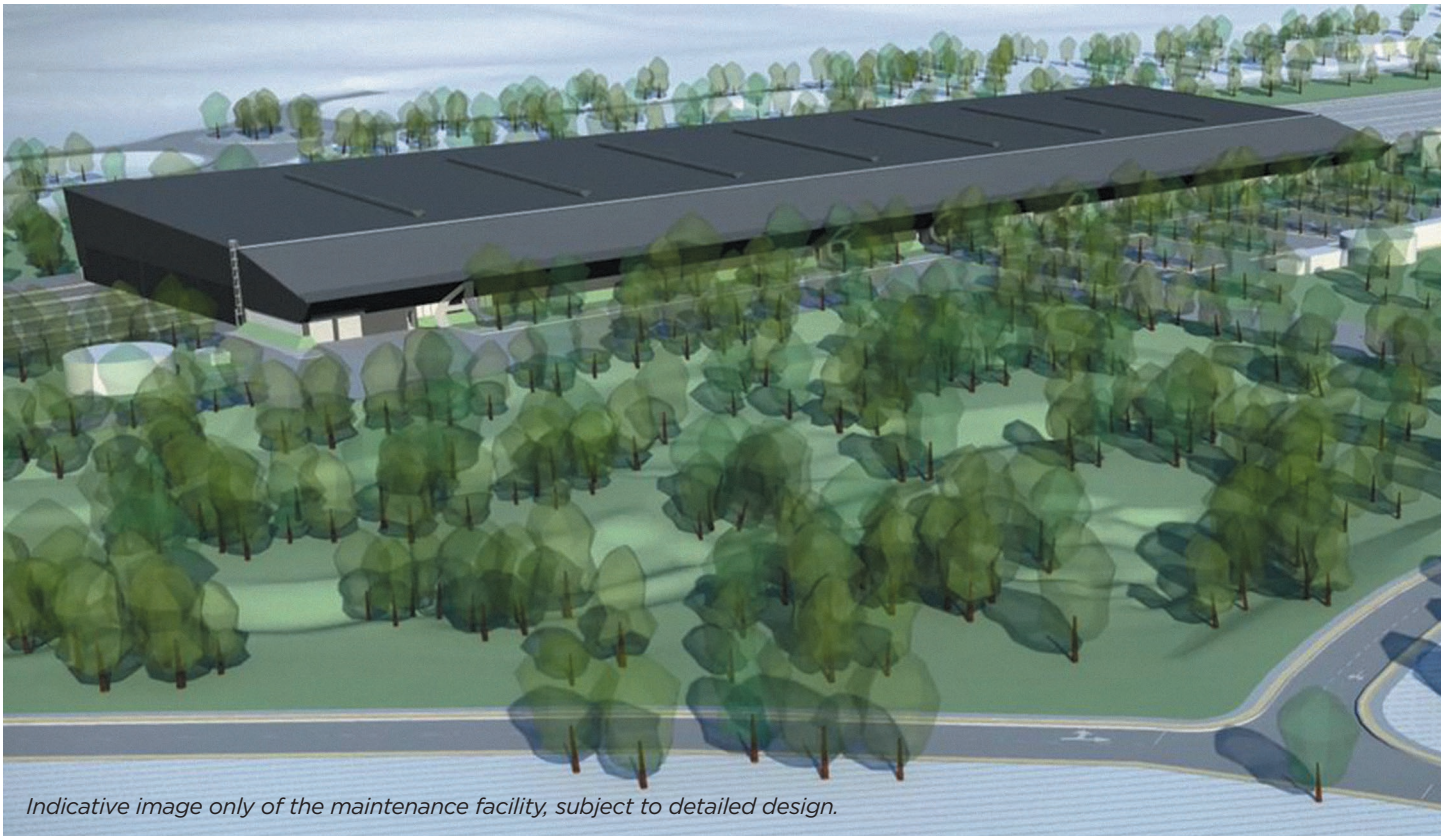
Key stakeholders are experiencing the new train in a full-scale model representing one and a half double decker carriages fitted out with the intended features. The use of the model is an important step in the project as it allows us to refine the design to ensure we deliver the best possible train fleet for our customers.



High contrast exterior doors on the life-size model of the New Intercity Fleet, subject to change during the detailed design process.



Artist's impression of the new wheelchair and priority seating area, subject to change during the detailed design phase.



Indicative image only of the maintenance facility, subject to detailed design.

Maintenance facility

Major construction work is now underway which includes the implementation of environmental controls, clearing the site, building access roads, and installing in-ground services and stormwater infrastructure.

Most workers and contractors are locally based following our commitment to engage with local industry and maximise employment opportunities.

The artist's impression above shows a preliminary design of the maintenance facility at Kangy Angy.

Springwood to Lithgow rail corridor modifications

The section of the Blue Mountains Line between Springwood and Lithgow is the only part of the electrified train network that has not been upgraded to modern standards.

The V-sets, which are approaching the end of their lifespan, are narrower than the rest of the electric trains operating in NSW and do not comply with Disability Standards for Accessible Public Transport (DSAPT).

All planning approvals are now in place for modifications required along the rail corridor from west of Springwood Station to Lithgow Station to accommodate the new trains. This includes minor modifications to the Ten Tunnels Deviation (between Newnes Junction Station and Zig Zag Station).

A contract is expected to be awarded later this year to start the detailed design for the project. Construction

is also expected to start later this year and take approximately two years to complete.

Most construction work will be done during pre-existing and scheduled Sydney Trains trackwork weekends/shutdown periods to minimise the impact on customers and ensure the safety of customers and staff.

We will keep the community and customers informed.

Stations and signalling modifications

Early work is underway at various locations across the electrified rail network to support the introduction of the New Intercity Fleet and allow for improved technology on the new trains. Work includes installing equipment which enables Automatic Selective Door Operation – ensuring only the correct doors open at each platform.

Upgrading existing facilities

Modifications to existing maintenance and stabling facilities to accommodate the New Intercity Fleet at Eveleigh, Broadmeadow, Wollongong and Port Kembla are now complete.

Construction continues at the Gosford facility and is expected to be complete later this year.

Would you like to know more?

Visit transport.nsw.gov.au/projects/current-projects/new-intercity-fleet

Regional Rail Fleet Project

Dubbo Maintenance Facility

Planning approval for the Dubbo-based, purpose-built maintenance facility for the new NSW regional train fleet is one step closer with the recent public exhibition of the Review of Environmental Factors (REF).

Community information sessions and stakeholder meetings were held to provide information about the project, the planning process and lodging submissions.

An information stall was also set-up at the thriving Dubbo Farmers' Market.



Planning progress

The project team's focus will now shift to reviewing community feedback and preparing the project's submissions report responding to feedback and comments.

The report is due to be published by the end of the year. If approved, construction is expected to start in 2019, with the maintenance facility fully operational by 2021.

Tender progress

We are holding a competitive procurement process to replace the regional rail fleet, which involves building, financing and maintaining a new train fleet and a new maintenance facility. The contract is expected to be awarded in early 2019.

The project team spoke to more than 130 people during the REF display.

Community feedback was largely positive, particularly in relation to the project's jobs, skills and industry participation benefits. The project's promise of significant jobs growth was embraced by Dubbo locals.



The project will deliver

50

long-term jobs including traineeships and apprenticeships

200+

jobs during construction

60

jobs during train completion work

Local businesses will also benefit from opportunities to supply goods and services to the project during construction and operation.

Would you like to know more? Visit transport.nsw.gov.au/projects/current-projects/regional-rail



This document contains important information about public transport projects in your area. If you require the services of an interpreter, please contact the Translating and Interpreting Service on **131 450** and ask them to call Transport for NSW on **(02) 9200 0200**. The interpreter will then assist you with translation.

For more information call 1800 684 490

Email projects@transport.nsw.gov.au or visit transport.nsw.gov.au/projects

For urgent enquiries or complaints regarding construction activities, please call 24 hours 1800 775 465

