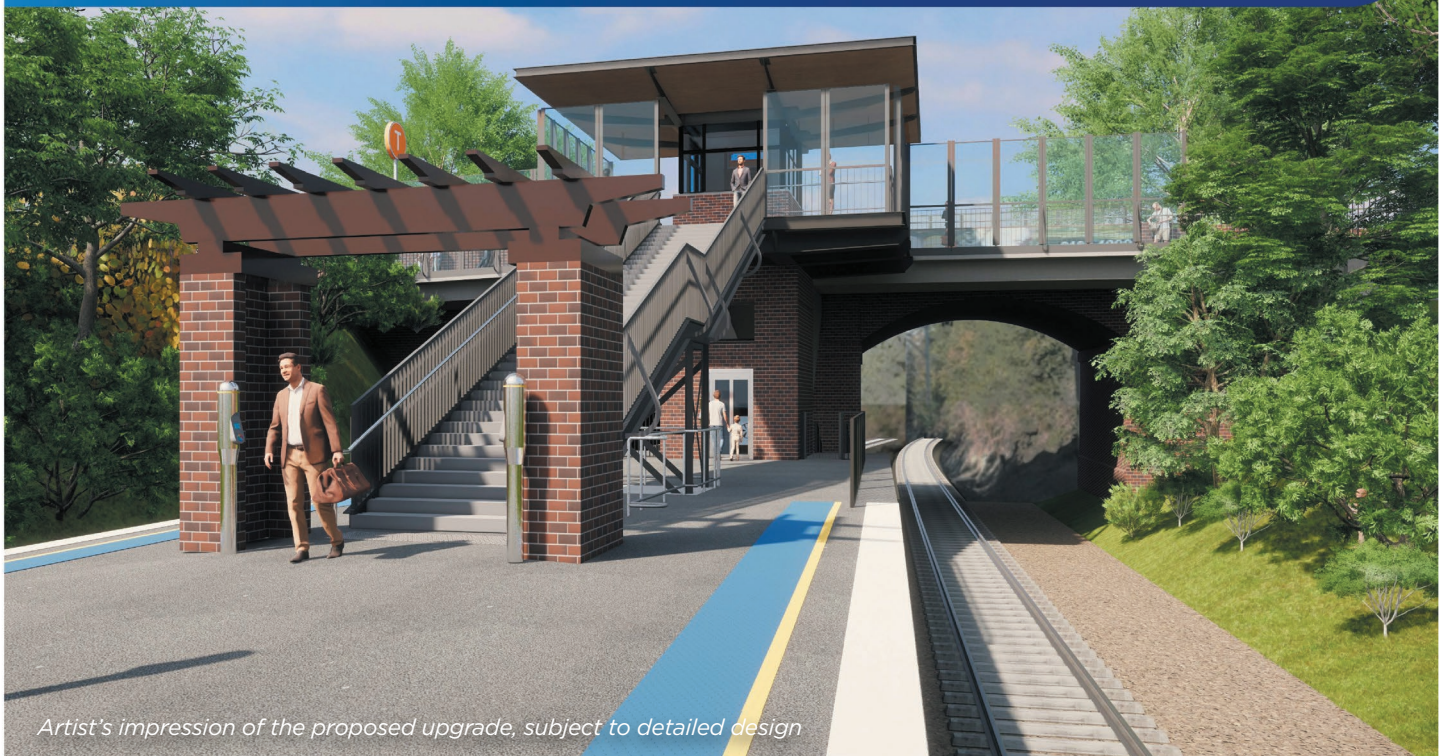


Transport Access Program

Wahroonga Station Upgrade

Have your say



The NSW Government is improving accessibility at Wahroonga Station

In November 2018, we asked the community for their feedback on the early concept design for the upgrade to Wahroonga Station. We received a lot of positive comments about the upgrade and thank the community for taking the time to meet with us at the station and provide their views on the plans.

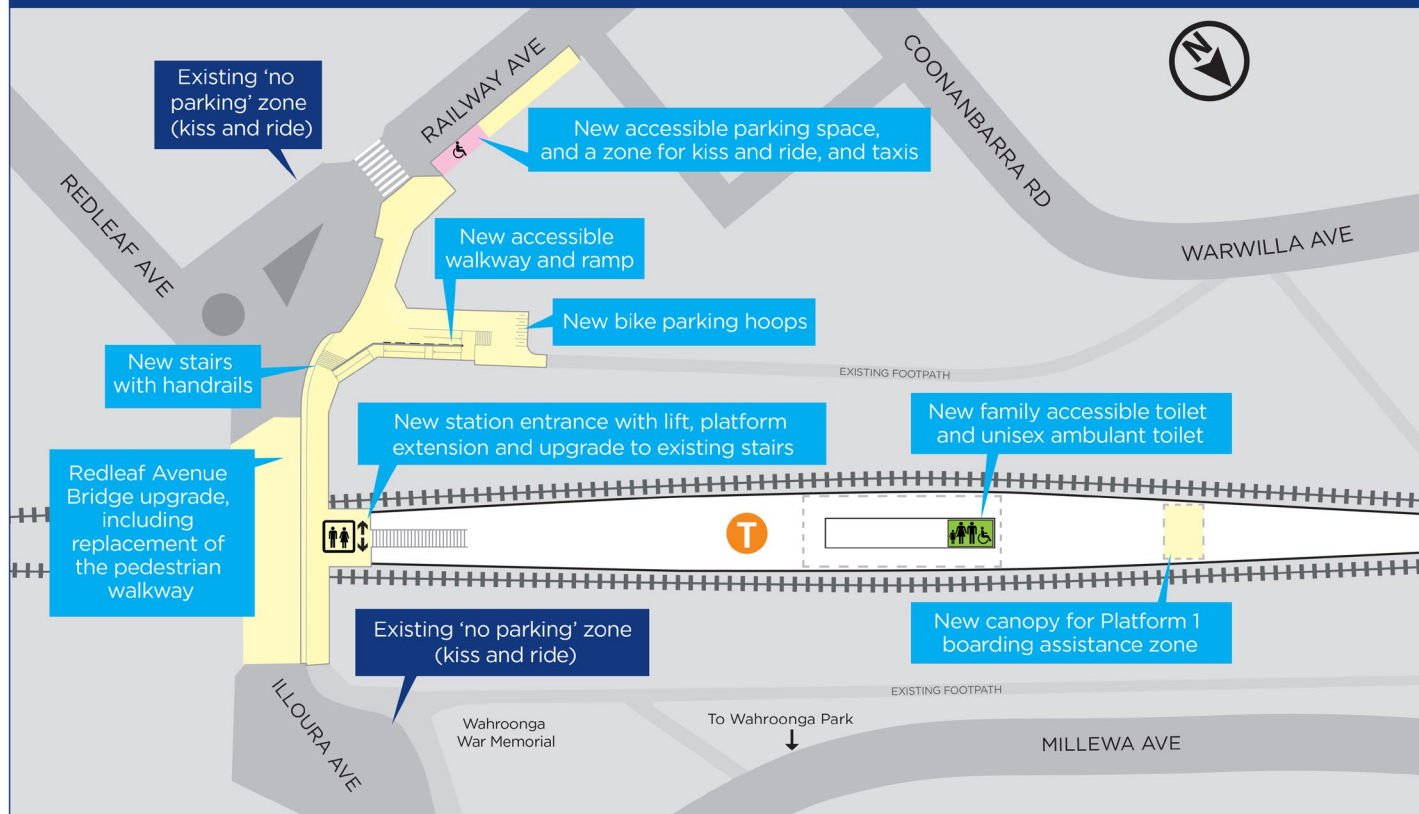
We have been working with key stakeholders to progress the concept design, which now includes an upgrade to the Redleaf Avenue Bridge and replacement of the pedestrian walkway.

To help inform the concept design, geotechnical, underground services and survey work has been completed. The Review of Environmental Factors and supporting studies including heritage, traffic and parking, flora and fauna, noise and vibration, and urban design have been completed and are now on public display.

Have your say on the proposed improvements to Wahroonga Station. Key features include:

- a new lift to provide access from the Redleaf Avenue Bridge to the station platform
- platform extension to connect to the new lift
- a new accessible ramp and walkway between the station and Wahroonga Shopping Village
- upgrade of the Redleaf Avenue Bridge and replacement of the pedestrian walkway
- a new family accessible toilet and unisex ambulant toilet
- new accessible parking space, and a zone for kiss and ride, and taxis
- improvements to CCTV and lighting
- a new canopy for the Platform 1 boarding assistance zone
- five new bike parking hoops.

Key features of the proposal



Key features of the proposed Wahroonga Station Upgrade, subject to detailed design.

Have your say

The Review of Environmental Factors is on public display from **Tuesday 3 December 2019 until Tuesday 17 December 2019**, and community feedback is invited during this time.

To view the REF, please scan the QR code or visit:

- www.transport.nsw.gov.au/wahroonga
- www.nsw.gov.au/improving-nsw/have-your-say/wahroonga-station-upgrade
- **Transport for NSW Office**
Level 5, Tower A, Zenith Centre,
821 Pacific Highway, Chatswood
- **Ku-ring-gai Council**
818 Pacific Highway, Gordon
- **Turrumurra Library**
5 Ray Street, Turrumurra

Feedback may be sent to:

- projects@transport.nsw.gov.au
- **Transport Access Program – Wahroonga Station Upgrade**
Associate Director Environmental
Impact Assessment
Transport for NSW
Locked Bag 6501
St Leonards NSW 2065

Please provide your feedback by
5pm Tuesday 17 December 2019.

Your feedback will help Transport for NSW understand what is important to customers and the community.

Visit the Transport Access Program website at www.transport.nsw.gov.au/wahroonga or scan the QR code to virtually explore the proposed station upgrades and leave your feedback.



Next steps

Transport for NSW develops initial concept design options for the project including identification and consideration of environmental constraints, risks and opportunities.



We are
here

Transport for NSW prepares a Review of Environmental Factors (REF) for public display and invites submissions.



Transport for NSW assesses and responds to feedback and prepares a submissions report/determination report with proposed conditions to minimise environmental impacts.



Transport for NSW determines the Proposal.
Conditions of Approval made available on Transport for NSW website.



Construction commences subject to compliance with conditions.
Subject to planning approval, construction is expected to commence in early 2020 and take around 24 months to complete.

Come and meet the project team

The Transport for NSW project team will be located at Wahroonga Station on **Monday 9 December 2019 from 4pm to 6pm** to answer any questions you may have on the project.

Feel free to drop in at any time during these hours.

If you have any questions, please call the Project Infoline on **1800 684 490** or email projects@transport.nsw.gov.au.

Review of Environmental Factors

The Review of Environmental Factors (REF) is a planning document outlining the proposed work, potential impacts and mitigation measures.

The document includes comprehensive assessments on the existing environment and potential impacts of the project on the following areas including traffic and transport, biodiversity, heritage, noise and vibration and visual impacts.



Artist's impression of the proposed station entrance upgrade, subject to detailed design

Construction timeframes

Major projects in and around the rail corridor like station and bridge upgrades are complex and require careful planning.

Preparation work needs to be completed before the new lift can be installed and the Redleaf Bridge bridge upgraded. This includes service relocation, excavation, piling and platform work, installing new electrical services underneath the tracks, and bridge support work.

For the safety of the community and workers, and minimise disruptions to train services, major construction activities are required to be completed during scheduled trackwork weekends when trains are not running. Upgrade work on the Redleaf Avenue Bridge will be carried out in stages to minimise impacts to traffic.

This means station upgrades generally take longer to build than other construction projects outside the rail corridor. Thank you for your patience as we work towards delivering this important project.

Transport Access Program

This project is being delivered as part of the Transport Access Program, a NSW Government initiative to provide a better experience for public transport customers by delivering accessible, modern, secure and integrated transport infrastructure. As part of this program, the Wahroonga Station Upgrade would aim to provide a station precinct that is accessible to those with a disability, limited mobility, parents/carers with prams and customers with luggage.



This document contains important information about public transport projects in your area. If you require the services of an interpreter, please contact the Translating and Interpreting Service on **131 450** and ask them to call Transport for NSW on **(02) 9200 0200**. The interpreter will then assist you with translation.

Simplified Chinese

这份文件包含你所在地区公共交通工程项目的重要信息。如果你需要传译服务，请致电翻译与传译服务机构，电话 **131 450**，要求他们为你接通交通工程部(Transport for NSW)，电话是 **(02) 9200 0200**。传译员会为你做翻译。

Korean

이 문서는 귀하의 해당 지역에 있는 대중교통 프로젝트에 관한 중요한 정보를 담고 있습니다. 통역사 서비스가 필요하시면 통번역서비스에 **131 450** 으로 연락하셔서 이들에게 NSW 대중교통 (Transport for NSW)에 **(02) 9200 0200** 으로 연락하도록 요청하십시오. 그러면 통역사가 번역과 함께 귀하를 도와드릴 것입니다.

For more information call **1800 684 490**

Email projects@transport.nsw.gov.au or visit transport.nsw.gov.au/wahroonga

