

Transport Access Program

Warrawee Station Upgrade

Project update

June 2020

The NSW Government is improving accessibility at Warrawee Station. This upgrade is part of the Transport Access Program, an initiative to provide a better experience for public transport customers by delivering modern, safe and accessible infrastructure.



Images: The new lift, roofing and canopies were craned into place in May

Upcoming work

Work will continue in June and will include:

- installing screens to the stairs and the pedestrian overbridge
- installing the lift car
- construction of the kiss and ride zone and footpath upgrades on Heydon Avenue and Warrawee Avenue
- demolition of the old bus shelter on Heydon Avenue to be replaced with new bus shelter
- continued fit out of the new family accessible and unisex ambulant toilet
- electrical and communication services.

Equipment

Equipment to be used may include excavators, rollers, concrete delivery trucks, concrete saws, hand tools, generators, power tools, heavy and light vehicles.

Traffic and parking changes

From early June, construction will commence on the new accessible parking spaces, kiss and ride zone and footpaths on Heydon Avenue. Pedestrian access to the station entrance will be maintained during construction.

For pick up and drop off, customers are encouraged to use Warrawee Avenue while the work in Heydon Avenue is being undertaken to avoid delays.

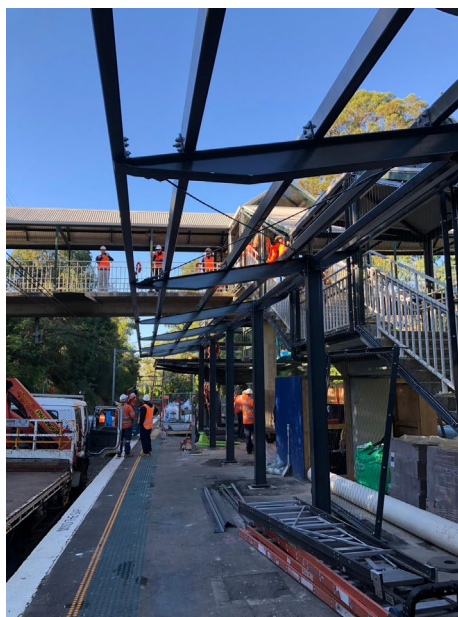
Upgrades to the footpath near the Warrawee Avenue station entrance will begin after completion of the work on Heydon Avenue.

Pedestrian access to the station entrance will be maintained. As above, for pick up and drop off, customers are encouraged to use the new kiss and ride zone on Heydon Avenue to avoid delays.

Traffic controllers will be in place to assist with changes to pedestrian and vehicle movements.

Access to amenities

Temporary toilet facilities are available at the north end of the platform while the existing male and female toilets are converted to a new family accessible toilet and unisex ambulant toilet.



Above left: The new lift shaft arrived by truck.

Above right: The new canopies being secured in May.

Keep in touch

We will continue to keep the community informed with regular project updates. Further information is available on the project website www.transport.nsw.gov.au/warrawee.

If you would like to be added to the project distribution list, please contact us on **1800 684 490** or email projects@transport.nsw.gov.au.

For urgent enquiries or complaints regarding construction activities, please call our 24-hour Construction Response Line on **1800 775 465**.

New construction hours

Under new rules introduced by the NSW Government to support the construction industry during the COVID-19 situation, some construction sites can now operate on weekends and public holidays.

Under the new Order, **standard construction hours are now 7am to 6pm every day, including public holidays.**

The *Environmental Planning and Assessment (COVID-19 Development – Construction Work Days) Order 2020* will continue for up to six months and all changes to the Order will be communicated accordingly.

It enables workers to abide by social distancing rules while keeping construction projects progressing by allowing building work to be spread across more days of the week.

The Warrawee project team doesn't anticipate utilising the extended hours during the month of June and will be working standard hours of **7am to 6pm Monday to Friday and 8am to 1pm Saturdays.**

For further details, **please visit the project web page**, or phone the **Project Infoline on 1800 684 490**.

Traditional Chinese

这份文件包含你所在地区公共交通工程项目的重要信息。如果你需要传译服务，请致电翻译与传译服务机构，电话 131 450，要求他们为你接通交通工程部 (Transport for NSW)，电话是 (02) 9200 0200。传译员会为你做翻译。

Korean

이 문서는 귀하의 해당 지역에 있는 대중교통 프로젝트에 관한 중요한 정보를 담고 있습니다. 통역사 서비스가 필요하시면 통번역서비스에 131 450 으로 연락하셔서 이들에게 NSW 대중교통 (Transport for NSW)에 (02) 9200 0200 으로 연락하도록 요청하십시오. 그러면 통역사가 번역과 함께 귀하를 도와드릴 것입니다.

Arabic

这份文件包含你所在地区公共交通工程项目的重要信息。如果你需要传译服务，请致电翻译与传译服务机构，电话 131 450，要求他们为你接通交通工程部 (Transport for NSW)，电话是 (02) 9200 0200。传译员会为你做翻译。

Spanish

El presente documento contiene información importante sobre proyectos de transporte público en su área. Si requiere los servicios de un intérprete, llame al Translating and Interpreting Service al 131 450 y pídale que llamen a **Transport for NSW**, teléfono: (02) 9200 0200. Luego el intérprete le ayudará con la traducción.