



Transport Access Program

Warrabee Station Upgrade

Project update

May 2020

The NSW Government is improving accessibility at Warrabee Station. This upgrade is part of the Transport Access Program, an initiative to provide a better experience for public transport customers by delivering modern, safe and accessible infrastructure.

Upcoming work

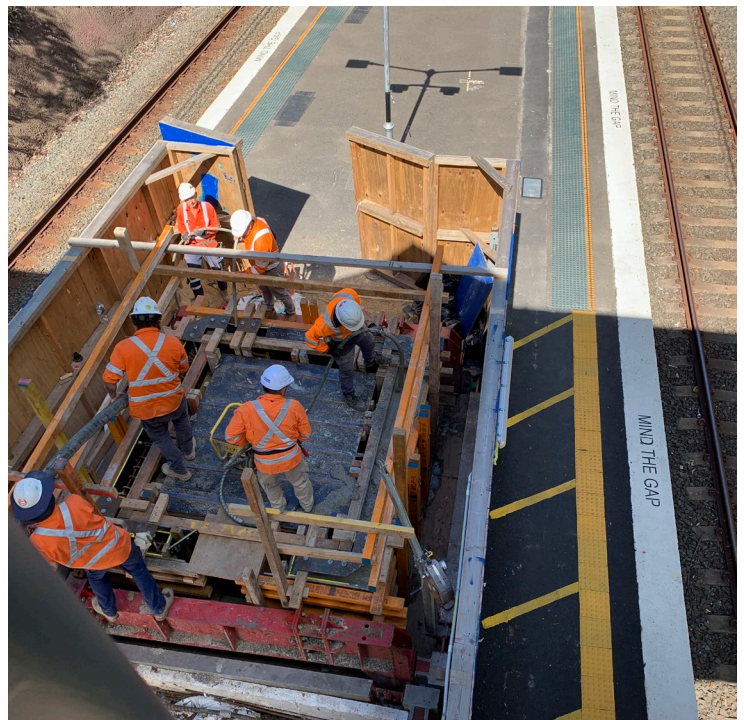
Work will continue in May and will include:

- installation of the lift and canopies
- reconfiguration of the new kiss and ride zone on Warrabee Avenue and footpath upgrades
- construction of the new toilet facilities
- electrical work to upgrade the station power supply, communications and lighting
- assembly of the lift car.

Equipment to be used includes, but is not limited to, concrete pumps, concrete saws, excavators, shoring equipment, a crane, hand tools, generators, power tools, heavy and light vehicles.

Work will be carried out during standard construction hours, which are **7am to 6pm Monday to Friday**, and **8am to 1pm Saturday**.

We will notify nearby residents and businesses in advance if we need to work outside these times.



Work to complete the lift sub structure and foundations was completed in April.

Weekend work – Saturday 2 and Sunday 3 May 2020

From **6am Saturday 2 May 2020** to **10pm Sunday 3 May 2020**, work will be carried out to install the lift. This includes installing the lift and platform canopies using a crane, steelworks and roofing to the lift and canopies. Trenching works for electrical upgrades to the station including a new power supply in Warrabee Avenue will also take place.

Work will be completed during a scheduled Sydney Trains track work weekend to enhance safety and minimise disruption to customers and community. No train services will operate and the station will be closed during this time.

Please contact Transport Info **131 500** or visit **transportnsw.info** for more information about replacement bus services.

There may be some noise associated with this work and we understand this may be disruptive at times. We apologise for the inconvenience and will aim to minimise impacts by:

- turning machinery off when not in use
- using non-tonal reversing beepers on all machinery
- minimising the number of equipment operating at any one time
- conducting regular noise monitoring.

Traffic and parking changes

Heydon Avenue will be temporarily closed from **2am on Saturday 2 May to 10pm on Sunday 3 May** to allow access and safe operation of a crane to install the lift structure. Traffic controllers will be in place to allow access for local residents only. Borambil Street, Hastings Road and Warrawee Avenue will remain open with the assistance of traffic control.

While the station is closed on **Saturday 2 May and Sunday 3 May**, the pedestrian footbridge will remain open, however there may be short delays to access the footbridge while machines operate. Please allow plenty of time to arrive to the station. Staff will be available to assist pedestrians at all times.

Work to the kiss and ride zone on Warrawee Avenue which was to start in April will now commence in May. It is expected to be closed from early May until the end of the month while it is reconfigured with additional spaces. The footpath along Warrawee Avenue which leads to the pedestrian footbridge and station entrance will also be upgraded during this time. Access to the footpath will be limited but maintained during construction. The kiss and ride zone, timed parking and footpath on Heydon Avenue station entrance will remain open.

Traffic control and pedestrian diversions will also be in place as required to assist with traffic changes.

Access to amenities

Temporary toilet facilities are available at the north end of the platform while the existing male and female toilets are converted to a new family accessible toilet and unisex ambulant toilet.

Project overview

The Warrawee Station Upgrade aims to provide a station precinct that is accessible to people with a disability, limited mobility, parents with prams and customers with luggage. Key features of the upgrade include:

- a new lift between the platform and existing footbridge
- a canopy from the new lift to the station building on the platform
- new accessible parking spaces and a kiss and ride space on Heydon Avenue
- new kiss and ride spaces on Warrawee Avenue
- new accessible pathways through the station precinct
- a new family accessible toilet and unisex ambulant toilet
- a new bike shelter
- improvements to CCTV and lighting to increase safety and security.

Keep in touch

The community will be kept informed with regular project notifications and information via the project website: www.transport.nsw.gov.au/warrawee.

For further information on the project, please call the Project Infoline on **1800 684 490** or email projects@transport.nsw.gov.au.

For urgent enquiries or complaints regarding construction activities, please call our 24-hour Construction Response Line on **1800 775 465**.

Traditional Chinese

这份文件包含你所在地区公共交通工程项目的重要信息。如果你需要传译服务，请致电翻译与传译服务机构，电话 131 450，要求他们为你接通交通工程部 (Transport for NSW)，电话是 (02) 9200 0200。传译员会为你做翻译。

Korean

이 문서는 귀하의 해당 지역에 있는 대중교통 프로젝트에 관한 중요한 정보를 담고 있습니다. 통역사 서비스가 필요하시면 통번역서비스에 131 450 으로 연락하셔서 이들에게 NSW 대중교통 (Transport for NSW)에 (02) 9200 0200 으로 연락하도록 요청하십시오. 그러면 통역사가 번역과 함께 귀하를 도와드릴 것입니다.

Arabic

这份文件包含你所在地区公共交通工程项目的重要信息。如果你需要传译服务，请致电翻译与传译服务机构，电话 131 450，要求他们为你接通交通工程部 (Transport for NSW)，电话是 (02) 9200 0200。传译员会为你做翻译。

Spanish

El presente documento contiene información importante sobre proyectos de transporte público en su área. Si requiere los servicios de un intérprete, llame al Translating and Interpreting Service al 131 450 y pídale que llamen a **Transport for NSW**, teléfono: (02) 9200 0200. Luego el intérprete le ayudará con la traducción.