

Commuter Car Park Program

Warwick Farm

Project update

November 2021

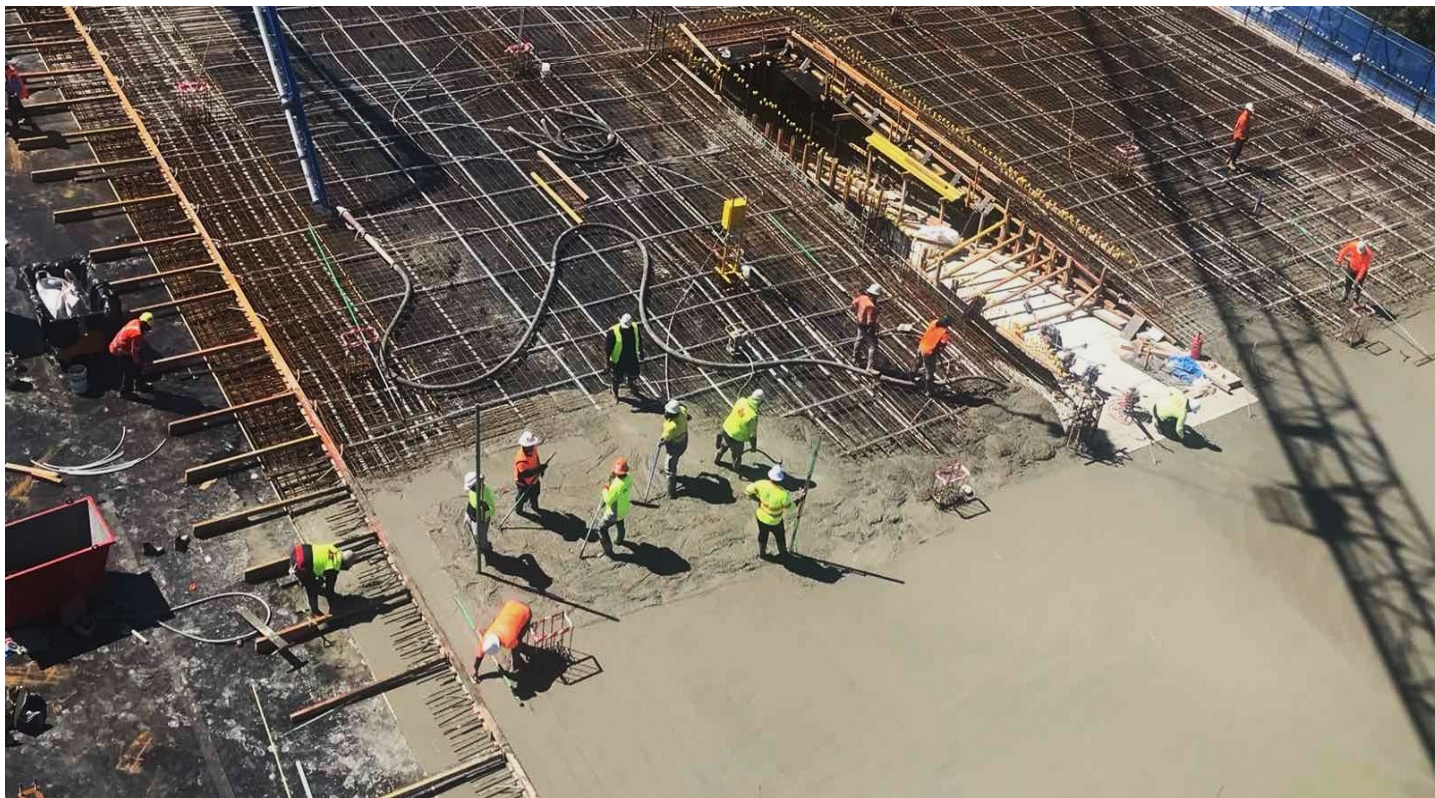


Photo above: A concrete pour in progress on the new Level 5.

Transport for NSW is delivering additional commuter parking at Warwick Farm to provide the community with more convenient access to public transport and reduce congestion on our roads. The project includes adding two levels to the existing multi-storey commuter car park to provide approximately 250 additional commuter parking spaces. Construction of the additional levels is now underway, and is expected to be open to commuters in early 2022.

Progress update

Levels 1, 2 and 3 of the multi-storey car park are temporarily closed to allow work to take place safely. Construction of the Level 4 and Level 5 main concrete slabs is nearing completion. Parking spaces on Level 1 are expected to reopen to commuters in late November, with Level 2 parking to reopen around two weeks later. The lifts will be commissioned and available early in 2022.

Upcoming work

Work activities planned for November include:

- removing temporary support structures on Levels 1 and 2
- constructing walls, lift wells, and stairwells on Levels 4 and 5 involving further concrete pours
- lift well fit out and lift installation

- starting structural steel work for the rooftop solar canopies and façade.

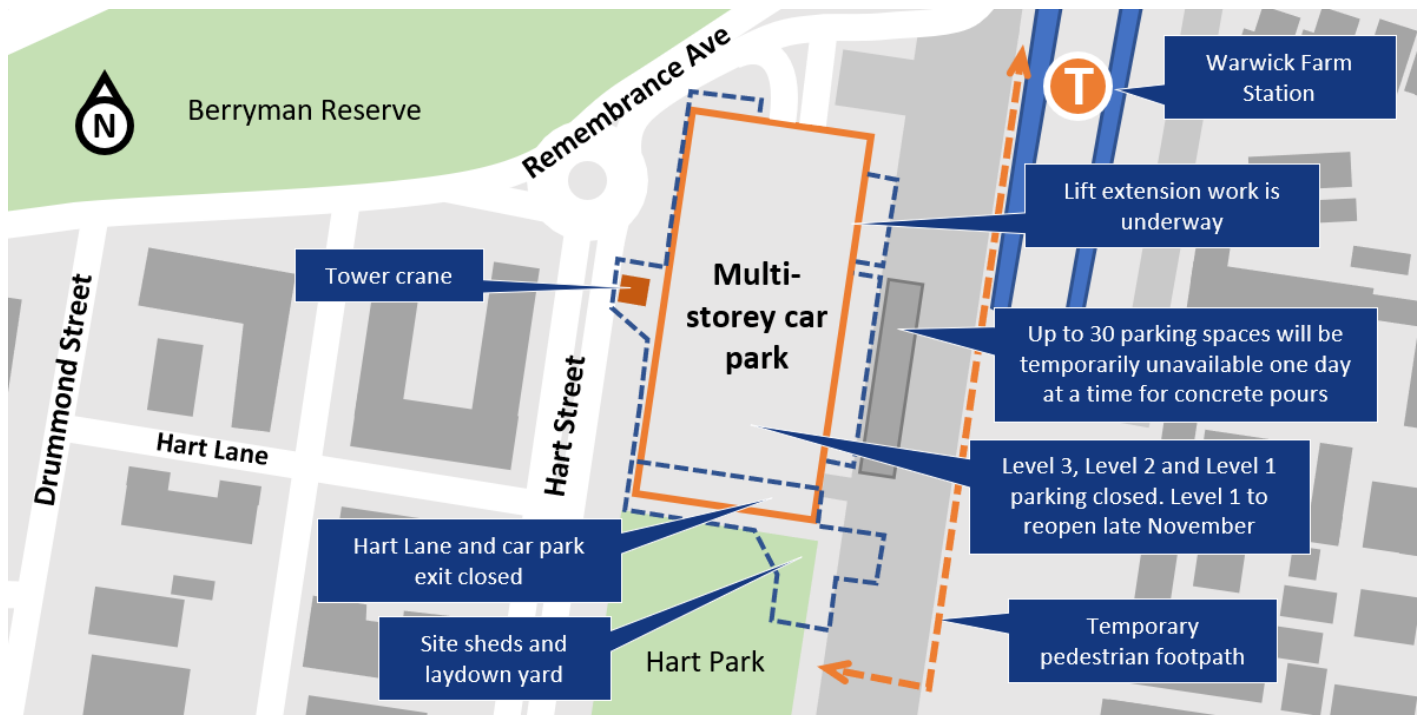
All work is subject to weather, site conditions and COVID restrictions, and may change without notice. Thank you for your patience during this important work.

Current parking restrictions

For the safety of the public and workers during large concrete pours, **up to 30 parking spaces** adjacent to the eastern side of the multi-storey car park will be **intermittently unavailable until the end of November**. These parking spaces will reopen to commuters between concrete pours. Traffic control and signage will be in place to assist customers with the changes. Please refer to the map below for an overview of current and upcoming changes.

Through November, three car spaces on the Ground level adjacent to the lift and three car spaces on Level 1 adjacent to the lift will be closed to allow the lift extension work to take place.

Site map of Warwick Farm Commuter Car Park



Construction hours

Our work program is subject to weather and site conditions. The program and timing of work may change. Most of the construction work will occur between 7am to 6pm Monday to Saturday, however we may also need to work from 9am to 5pm on Sundays on occasion. These extended construction hours are approved by the NSW Government under special provisions during the COVID pandemic. Work generating high-impact noise such as jack hammering will not be undertaken in the extended hours. Work will be carried out in line with current Public Health Orders.

Keeping you up to date

We will continue to keep the community informed with regular project updates. More information about the project is available on our website www.transport.nsw.gov.au/warwickfarm.

If you would like to sign up to our project distribution list, please contact us on **1800 684 490** or email projects@transport.nsw.gov.au and we will email you regular updates.

For all urgent enquiries or complaints regarding construction activities, please call our **24-hour Construction Response Line** on **1800 775 465**.



This document contains important information about public transport projects in your area. If you require the services of an interpreter, please contact the Translating and Interpreting Service on **131 450** and ask them to call Transport for NSW on **1800 684 490**. The interpreter will then assist you with translation.

For more information call **1800 684 490**

Email projects@transport.nsw.gov.au or visit www.transport.nsw.gov.au/warwickfarm

For urgent enquiries or complaints regarding construction activities, please call 24 hours **1800 775 465**