



Transport Access Program

Unanderra Station Upgrade

COMMUNITY NOTIFICATION

DECEMBER 2021 JANUARY 2022

The NSW Government is improving accessibility at Unanderra Station. This upgrade will be delivered as part of the Transport Access Program, an initiative to provide a better experience for public transport customers by delivering modern, safe, and accessible infrastructure.

Changes at Unanderra Station

Construction activities for the new footbridge will start in January. The new footbridge will replace the existing footbridge and will be built in the centre of the platform with three connecting stairways and three lifts.

Upcoming work

From **13 December 2021**, we will be beginning substantial activity for the new footbridge and lifts. This will involve roadwork and excavation for the foundations of the new structures. In preparation for this work, changes to the traffic flow and the commuter car park are necessary to safely deliver supplies and equipment, and to accommodate safe areas for the protection of commuters and workers.

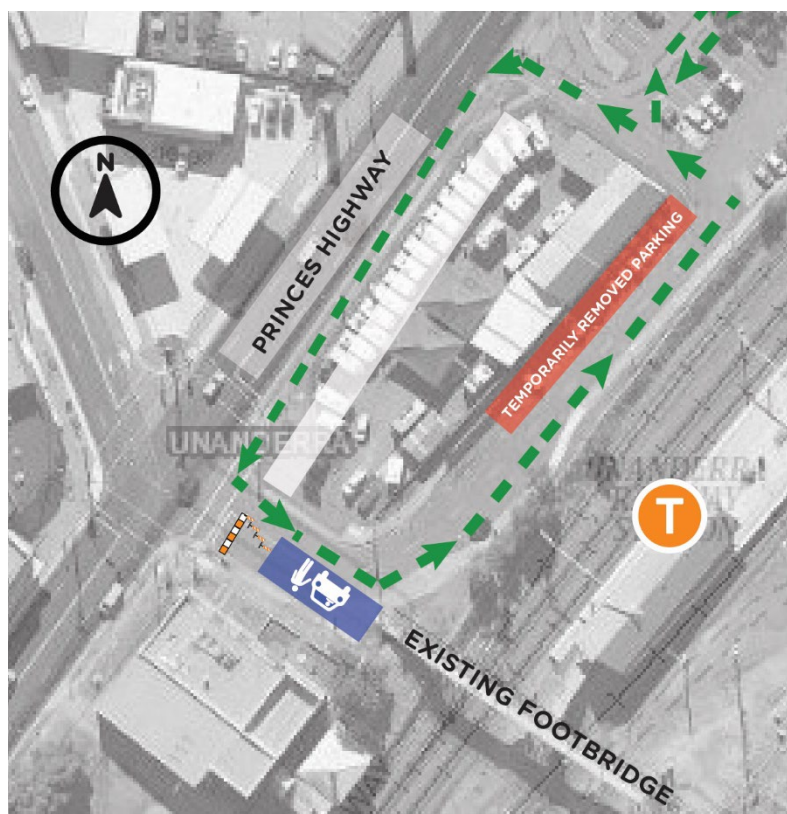
Heavy machinery, plant, equipment, and supplies will start to be delivered in December. Equipment to be used includes excavators, rock hammers, bobcats, piling rigs, cranes, and power tools.

Changes to Berkeley Road (West)

Effective from **13 December 2021**, Berkeley Road (West) will become one-way. The traffic light intersection with Princes Highway will be the only entry into Berkeley Road (West). All changes will be signposted with alternate directions and detours for vehicles and pedestrians, and traffic control will be in place for the safety of workers and the public.

12 parking spaces will be removed and the bus stop opposite the station on Berkeley Road (West) will be relocated.

These changes will be in place for approximately 12 months*.



Berkeley Road (West) will become one-way from 13 December 2021

For more information call **1800 684 490**

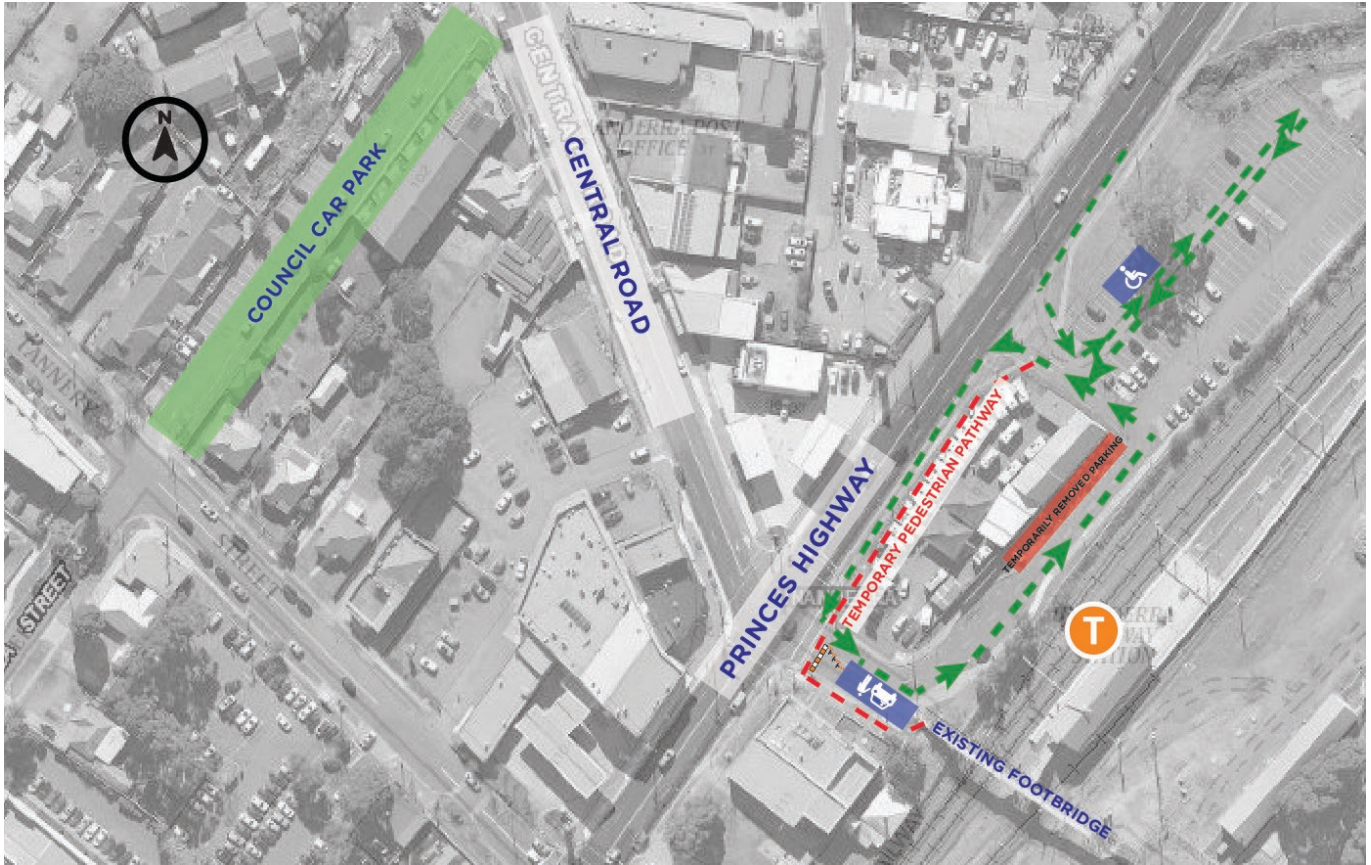
Email projects@transport.nsw.gov.au or visit transport.nsw.gov.au/unanderra

For urgent enquiries or complaints regarding construction activities, please call 24 hours **1800 775 465**

Changes to the commuter car park

All vehicles will be exiting directly onto the Princes Highway. Some parking spaces will be temporarily unavailable for the duration of this initial work but will be reintroduced as work progresses. When there are significantly reduced car spaces, we invite commuters who drive to the station to park in the Wollongong Council car park on Central Road. There will be signage in the commuter car park directing you to the Council car park should you need to use it.

Accessible parking will be temporarily relocated to the main car park area, as shown below.



Berkeley Road (West) traffic flow changes, new accessible parking location, pedestrian access to the station will temporarily change from 4 January 2022. Alternate car parking available at the Council car park on Central Road.

Pedestrian access

From **4 January 2022**, pedestrian access from the commuter car park to the station will be via the footpath alongside Princes Highway into Berkeley Road (West). Please allow more time than usual to park your car and then walk to the station.

Relocation of the 'kiss and ride zone'

From **4 January 2022**, the 'kiss and ride' zone will move to the footbridge entrance on Berkeley Road (West).



Premier Illawarra bus stops will be relocated

From **13 December 2021**, the Premier Illawarra bus stop on Berkeley Road (West) will be relocated to Princes Highway. Signage and announcements to all customers will be provided by Premier Illawarra. Signage showing the pedestrian route from the relocated bus stop to the station will also be in place.



Alternate bus stops on Princes Highway for north and south bound buses.

Working hours

To support industry and continue the delivery of critical infrastructure, the NSW Government has amended the rules around operating hours on work sites. Sites can now operate **seven days a week and on public holidays from 7am to 6pm**. These amendments allow worksites to support social distancing and the health and wellbeing of workers. To compensate for the delays caused by Covid-19 restrictions, the Unanderra Station Upgrade will be using the extended hours.

** Expected project completion date is December 2022 (subject to change).*

Contact us

If you have any questions or would like more information on the Unanderra Station Upgrade, please contact our project team:



project information line: 1800 684 490



projects@transport.nsw.gov.au



transport.nsw.gov.au/unanderra



24/7 construction response line: 1800 775 465



If you need help understanding this information, please contact the Translating and Interpreting Service on 131 450 and ask them to call us on (02) 9200 0200