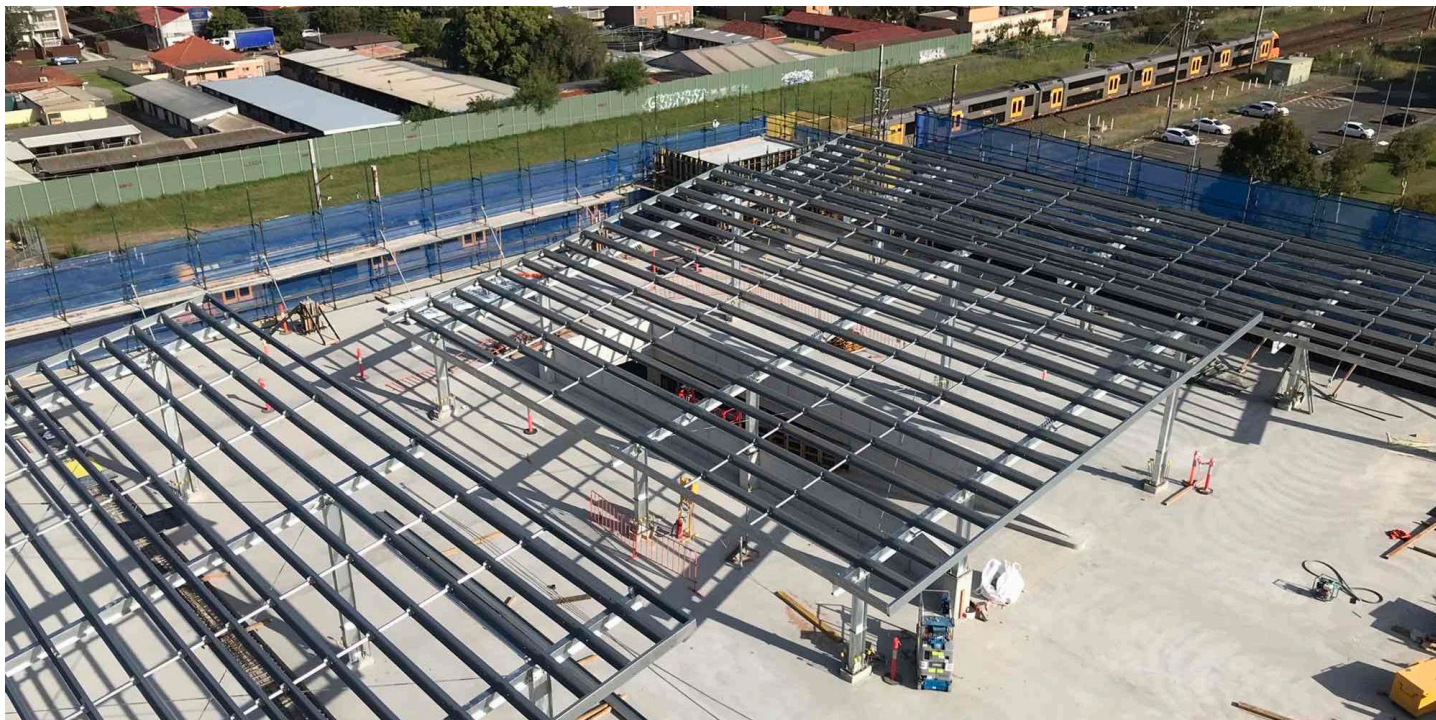


# Commuter Car Park Program

## Warwick Farm

**Project update**

**December 2021 – January 2022**



*Structural steel being installed for rooftop solar panels on the new Level 5.*

Transport for NSW is delivering additional commuter parking at Warwick Farm to provide the community with more convenient access to public transport and reduce congestion on our roads. The project includes adding two levels to the existing multi-storey commuter car park to provide approximately 250 additional commuter parking spaces. Construction of the additional levels is now underway, and is expected to be open to commuters in early 2022.

### Progress update

Levels 1 and 2 of the multi-storey car park have been reopened to the public for use. Level 3 remains temporarily closed to allow work to continue safely. Construction of the Level 4 and Level 5 main concrete slabs has been completed. Lift access will be available in early 2022.

### Upcoming work

Work activities planned for December and January include:

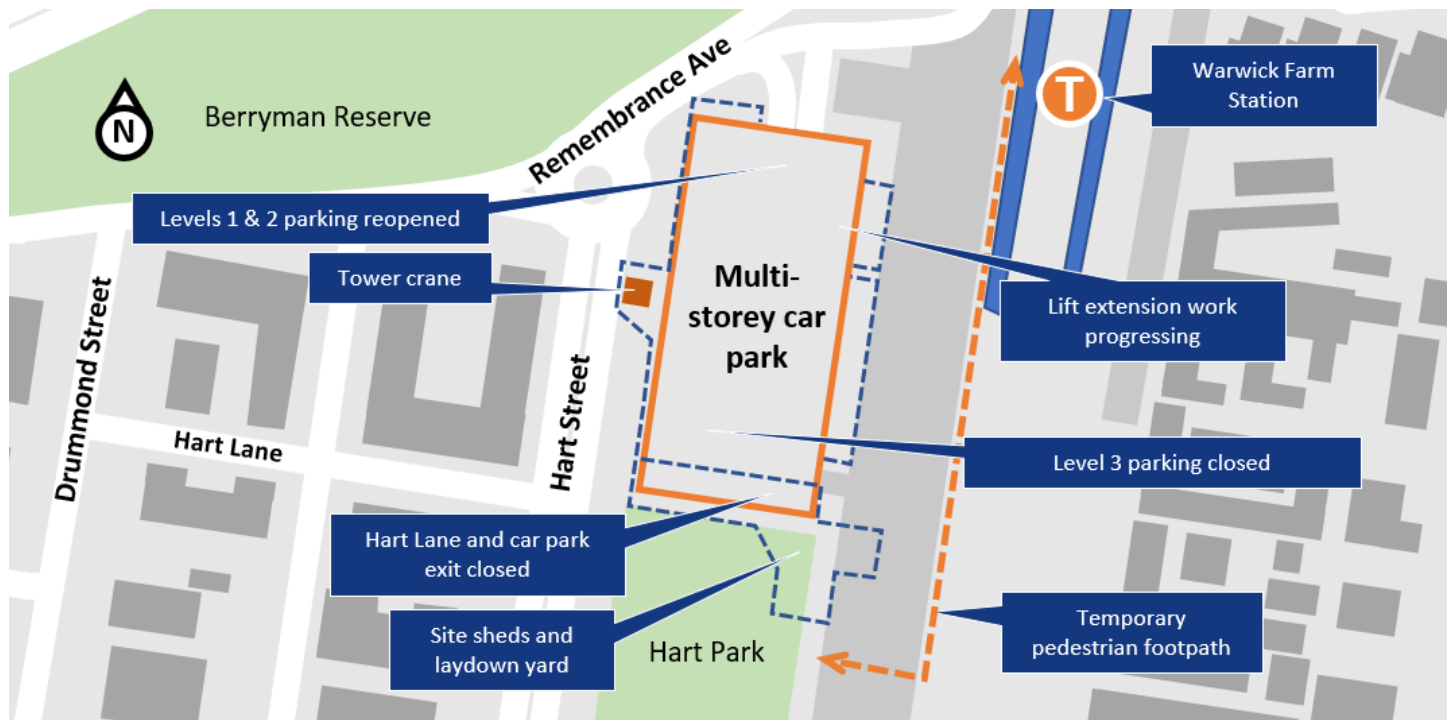
- installing lifts
- installing electrical, communications and other utility services
- installing structural steel for the rooftop solar canopies and the façade
- installing safety screens
- line markings
- removing the tower crane from site in early 2022.

All work is subject to weather, site conditions and COVID restrictions, and may change without notice. Thank you for your patience during this important work.

## Current parking restrictions

Through December and January, three car spaces on the ground level adjacent to the lift and three car spaces on Level 1 adjacent to the lift will be closed to allow the lift extension work to take place. Also, around 25 car spaces will remain blocked off on the eastern side of Level 2 until the scaffold is removed in early 2022.

## Site map of Warwick Farm Commuter Car Park



## Construction hours

Our work program is subject to weather and site conditions. The program and timing of work may change. Most of the construction work will occur between 7am to 6pm Monday to Saturday, however we may also need to work from 9am to 5pm on Sundays on occasion. These extended construction hours are approved by the NSW Government under special provisions during the COVID pandemic. Work generating high-impact noise such as jack hammering will not be undertaken in the extended hours. Work will be carried out in line with current Public Health Orders.

There will be a break from construction over the holiday period between close of business Friday 24 December 2021 and Tuesday 4 January 2022. During the holiday break security will be maintained.

## Keeping you up to date

We will continue to keep the community informed with regular project updates. More information about the project is available on our website [www.transport.nsw.gov.au/warwickfarm](http://www.transport.nsw.gov.au/warwickfarm).

If you would like to sign up to our project distribution list, please contact us on **1800 684 490** or email [projects@transport.nsw.gov.au](mailto:projects@transport.nsw.gov.au) and we will email you regular updates.

For all urgent enquiries or complaints regarding construction activities, please call our **24-hour Construction Response Line** on **1800 775 465**.



This document contains important information about public transport projects in your area. If you require the services of an interpreter, please contact the Translating and Interpreting Service on **131 450** and ask them to call Transport for NSW on **1800 684 490**. The interpreter will then assist you with translation.

For more information call **1800 684 490**

Email [projects@transport.nsw.gov.au](mailto:projects@transport.nsw.gov.au) or visit [www.transport.nsw.gov.au/warwickfarm](http://www.transport.nsw.gov.au/warwickfarm)

For urgent enquiries or complaints regarding construction activities, please call 24 hours **1800 775 465**