

Commuter Car Park Program

Warwick Farm

Project update

October 2021

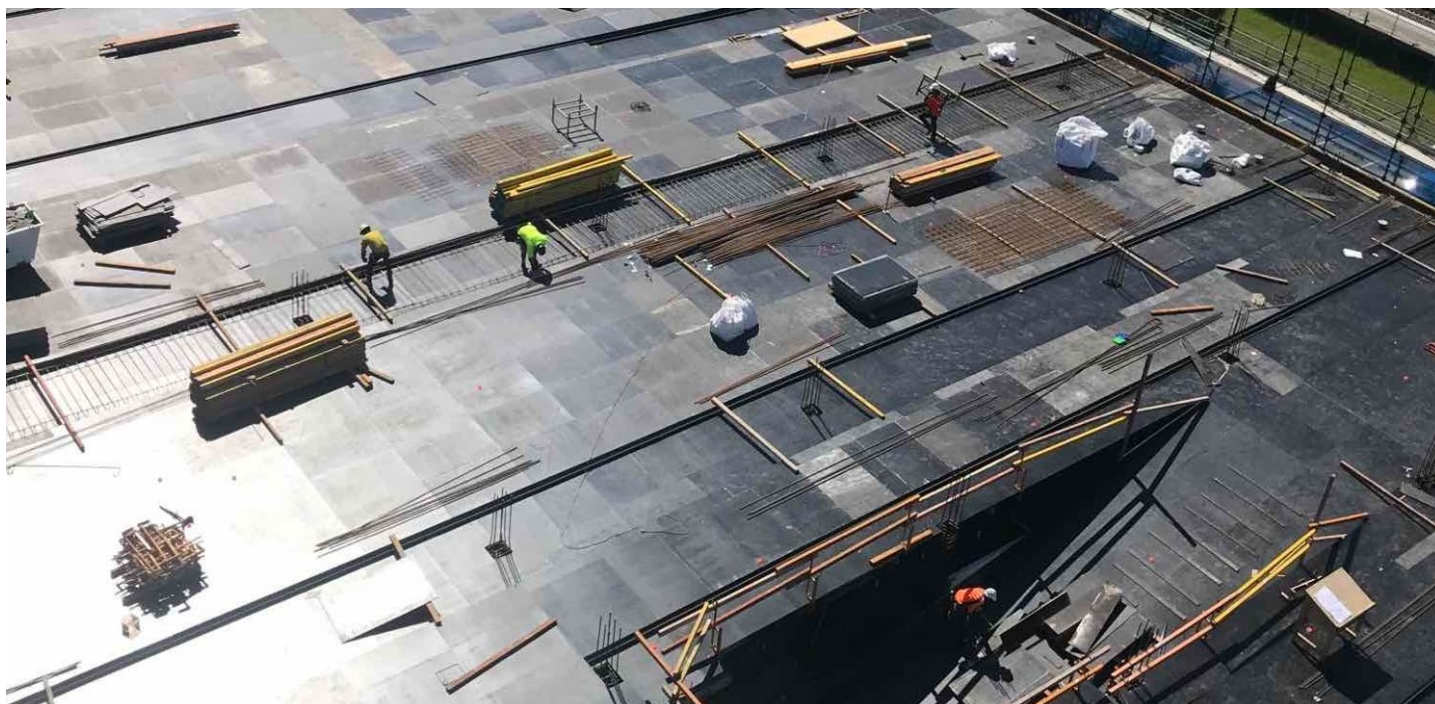


Photo above: View from the tower crane of formwork being constructed before a concrete pour on the new Level 4.

Transport for NSW is delivering additional commuter parking at Warwick Farm to provide the community with more convenient access to public transport and reduce congestion on our roads. The project includes adding two levels to the existing multi-storey commuter car park to provide approximately 250 additional commuter parking spaces. Construction of the additional levels is now underway, and is expected to be open to commuters in early 2022.

Progress update

Work to extend the multi-storey commuter car park is continuing in line with the current Public Health Orders. Levels 1, 2 and the rooftop of the multi-storey car park are temporarily closed to allow work to take place safely. Construction activities including concrete pours for the new Level 4 are now in progress.

Upcoming work

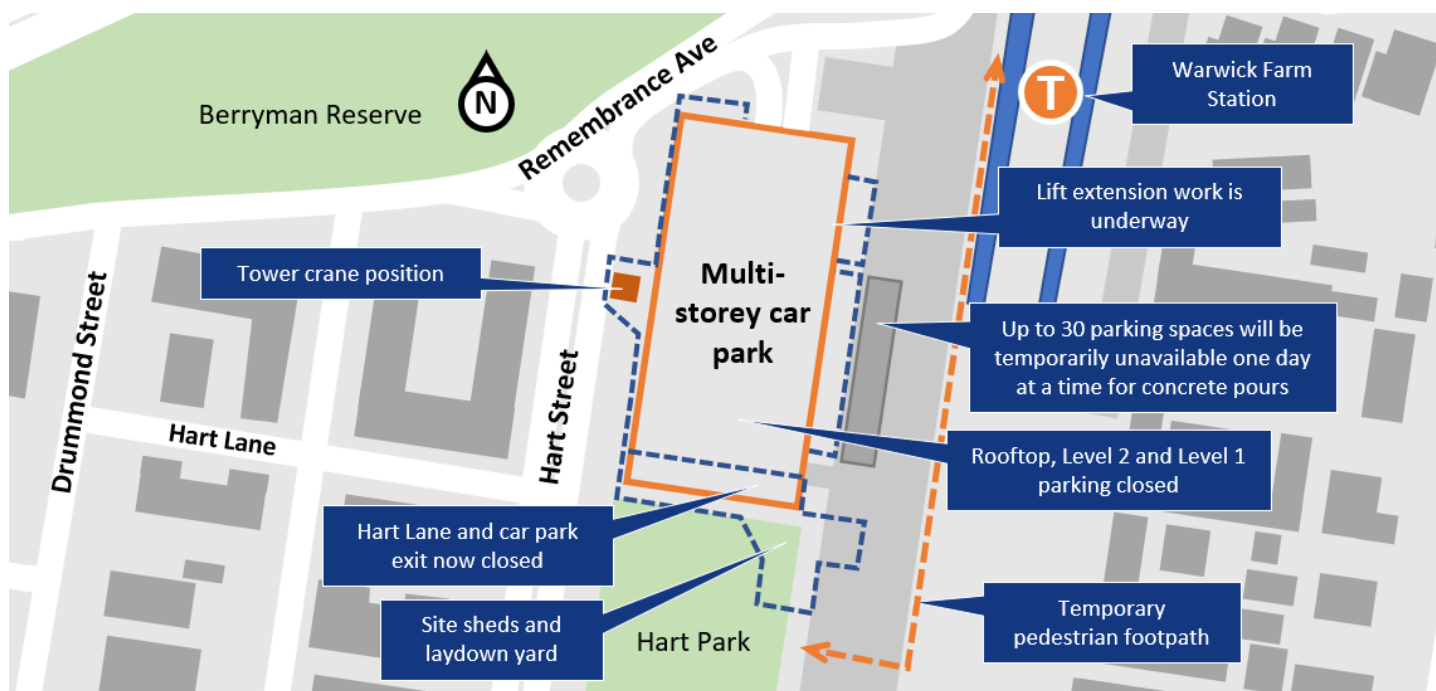
For the safety of the public and workers during large concrete pours, **up to 30 parking spaces** adjacent to the eastern side of the multi-storey car park will be **intermittently unavailable until end of November**. These parking spaces will reopen to commuters between concrete pours. Traffic control and signage will be in place to assist customers with the changes. Please refer to the map overleaf for an overview of current and upcoming changes.

Other work activities planned for October include construction of the new upper levels of the car park structure, work to extend the existing lift well, and demolition and concrete work to build a new second lift. Thank you for your patience during this important work.

Night time work

Approximately **two concrete pours per week** are scheduled to take place until end of November. Subject to approval, **this work may run until 10pm** for concrete finishing activities, cleaning up, and removal of the concrete pumping equipment from site. All work after 6pm will be as quiet as possible and should not adversely impact neighbouring residents.

Site map of Warwick Farm Commuter Car Park



Construction hours

Our work program is subject to weather and site conditions. The program and timing of work may change. Majority of work activities will be between **7am to 6pm Monday to Saturday**. Work from 9am to 5pm Sundays may be required on occasion. These extended construction hours are approved by the NSW Government under special provisions during the COVID pandemic. Work generating high-impact noise such as jack hammering will not be undertaken in the extended hours. Work will be carried out in line with current Public Health Orders.

Keeping you up to date

We will continue to keep the community informed with regular project updates. More information about the project is available on our website www.transport.nsw.gov.au/warwickfarm.

If you would like to sign up to our project distribution list, please contact us on **1800 684 490** or email projects@transport.nsw.gov.au and we will email you regular updates.

For all urgent enquiries or complaints regarding construction activities, please call our **24-hour Construction Response Line** on **1800 775 465**.



This document contains important information about public transport projects in your area. If you require the services of an interpreter, please contact the Translating and Interpreting Service on **131 450** and ask them to call Transport for NSW on **1800 684 490**. The interpreter will then assist you with translation.

For more information call **1800 684 490**

Email projects@transport.nsw.gov.au or visit www.transport.nsw.gov.au/warwickfarm

For urgent enquiries or complaints regarding construction activities, please call 24 hours **1800 775 465**