

# Narrabri Station Upgrade

Transport Access Program | Project Update | June 2022

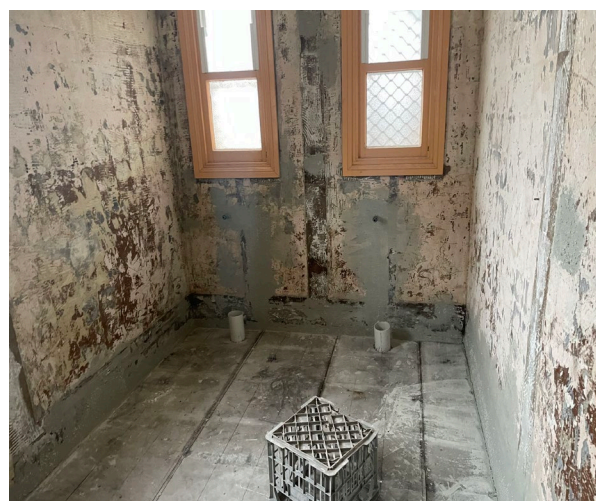
## Work on improving accessibility at Narrabri Station is well underway

The NSW Government is improving accessibility at Narrabri Station. This upgrade is being delivered as part of the Transport Access Program, an initiative to provide a better experience for public transport customers by delivering modern, safe and accessible infrastructure.

### Works completed to date

Since construction started in December 2021, a number of activities have been completed, which include:

- Establishing the site compound
- Demolition of existing amenities, waiting room and entry stairs
- Installation of new subfloor structure and flooring to wet areas
- New internal wall frames
- Rough in services to new bathroom amenities
- Sheeting of walls
- Construction of new entry stairs and accessible compliant ramps



## Upcoming work

Construction activities at the station will continue over the next two months. Work will include:

- Completion of waterproofing, tiling and fit out of amenities.
- reconstruction of the waiting room including timber floors, joinery and bench seats
- re-asphalting of the driveway and carpark
- landscaping works

## Construction hours

Work will be undertaken during standard construction hours:

- **Monday to Friday between 7am and 6pm**
- **Saturday from 8am to 1pm**

Work will continue over the next two months, with the project expected to be completed by the end of July 2022, weather permitting. We will notify nearby residents and businesses in advance if additional night or weekend work is required.

## Contact us

If you have any questions or would like more on the Narrabri Station Upgrade, please contact our project team:



Project information line: **1800 684 490**



[projects@transport.nsw.gov.au](mailto:projects@transport.nsw.gov.au)



[transport.nsw.gov.au/narrabri](https://transport.nsw.gov.au/narrabri)



24/7 construction response line: **1800 775 465**



If you need help understanding this information, please contact the Translating and Interpreting Service on **131 450** and ask them to call us on **1800 684 490**