

# Transport Access Program

## Pymble Station Upgrade

Transport for NSW | August 2022

The Pymble Station Upgrade is part of the Transport Access Program, an NSW Government initiative to provide a station that is accessible to people with a disability, limited mobility, parents / carers with prams, and customers with luggage. We thank you for your patience during this important work.

### What's next at Pymble in August?

Work will include:

- lift construction works, including installing structural steel, roofs and canopies and the lift cars into the shafts
- regrading and resurfacing the station platforms and Pacific Highway car park
- installing electrical services within and around the station
- public domain works on Pacific Highway including upgrades to footpaths, kerbs, and gutters

Please note, pedestrian and motorist access along Pacific Highway will be diverted under traffic control while we carry out the public domain works.

### Out of hours work in August

We will be working outside of standard construction hours over the following periods:

- **From 8pm Wednesday 3 August to 5am Thursday 4 August**, we will be working on the Pacific Highway to install low voltage electrical services
- **From 6pm Friday 5 August to 11pm Sunday 7 August**, we will be working at Pymble Station to install high voltage electrical services and structural steel for the new lifts.

Materials removed from the platform will be stockpiled within the rail corridor on Grandview Street, adjacent to Wellesley Road. Stockpiled materials will be removed from the rail corridor during standard construction hours 7am to 6pm Monday to Friday and 8am to 1pm Saturday.

### Pacific Highway temporary car park closure

The Pacific Highway car park will be closed from **4pm Friday 5 August to 11pm Sunday 7 August**. This closure will allow for our regrading and resurfacing work to be carried out safely and for plant and machinery to access the site safely.

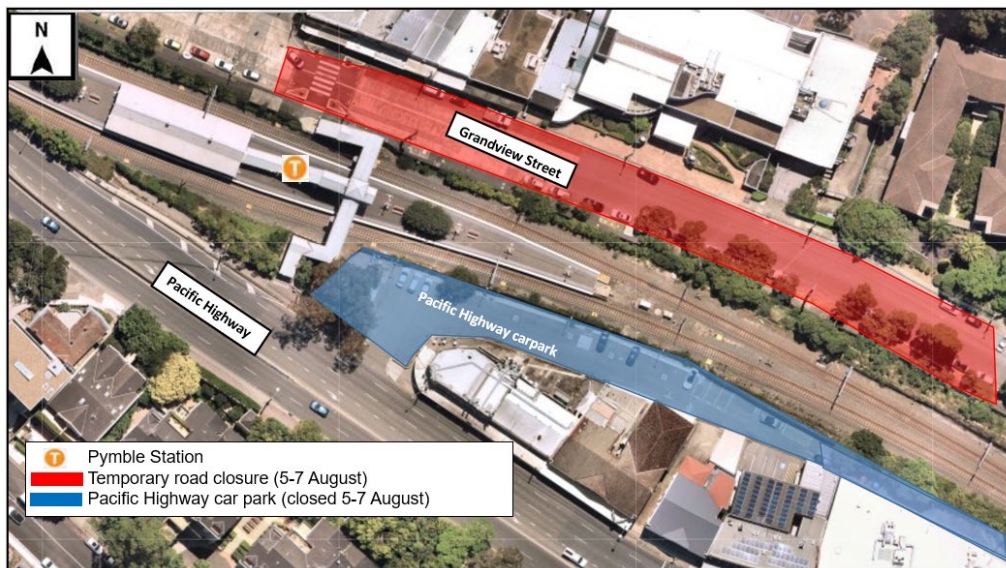
### Grandview Street

#### Temporary removal of parking

From **4pm Friday 5 August to 11pm Sunday 7 August** parking on Grandview Street, between Station Street and Alma Street, will be removed to allow for the implementation of a road closure for our planned weekend work.

#### Temporary traffic changes

From **11pm Friday 5 August to 10pm Sunday 7 August**, a road closure between Station Street and Alma Street will be in place, for the set-up of a mobile crane to install power poles and structural steel.



During this period, shops along Grandview Street will remain open and pedestrian access will be maintained at all times. Under traffic control directions, safe residential access will be maintained. Traffic delays may be experienced, motorists are advised to allow additional time to travel through the area.

## How this work may affect you

Our work throughout August will use a range of equipment including excavators, vacuum trucks, road saws, tipper trucks, flatbed trucks, tilt trays, concrete trucks and pumps, elevated working platforms, lighting towers, dump trucks, jackhammers, work vehicles, augers, grinders, chain saws, chippers, cranes, and various hand and power tools.

Our work will be noisy at times. Where possible, measures will be implemented to reduce noise and dust associated with these works, including adding shade cloth mesh to fencing, turning off equipment when not in use, placing equipment as far away as possible from properties and using non-tonal reversing beepers.

## Changes to scheduled work

Work schedules are subject to change due to permits, weather and site conditions. Further notification will be provided should there be significant changes to the construction program.

## Contact us

If you have any questions or would like more information, please contact our project team:

1800 684 490

[projects@transport.nsw.gov.au](mailto:projects@transport.nsw.gov.au)

[transport.nsw.gov.au/Pymble](https://transport.nsw.gov.au/Pymble)



## Translating and interpreting service

If you need help understanding this information, please contact the Translating and Interpreting Service on **131 450** and ask them to call us on **1800 684 490**

August 2022

Privacy Transport for NSW (TfNSW) is subject to the Privacy and Personal Information Protection Act 1998 ("PPIP Act") which requires that we comply with the Information Privacy Principles set out in the PPIP Act. All information in correspondence is collected for the sole purpose of assisting in the delivery of this project. The information received, including names and addresses of respondents, may be published in subsequent documents unless a clear indication is given in the correspondence that all or part of that information is not to be published. Otherwise we will only disclose your personal information, without your consent, if authorised by the law. Your personal information will be held by us at 27 Argyle Street, Parramatta. You have the right to access and correct the information if you believe that it is incorrect.