

# Transport Access Program

## Pymble Station Upgrade

Transport for NSW | November 2022

The Pymble Station Upgrade is part of the Transport Access Program, a NSW Government initiative to provide a station that is accessible to people with a disability, limited mobility, parents / carers with prams, and customers with luggage. We thank you for your patience during this important work.

### What's next at Pymble in November?

Throughout November, work will include:

- fit-out of new lifts
- installing and testing electrical services
- installing new high voltage poles on Grandview Street
- cable pulling within the rail corridor
- resurfacing on the Pacific Highway

### Upcoming work in November

Work will continue **Monday to Friday from 7am until 6pm**, and **from 8am until 1pm on Saturdays**.

We will be working outside of standard construction hours over the following weekends:

- **From 4am Saturday 5 November until 11pm Sunday 6 November**, we will be installing structural steel for the new lifts, and carrying out electrical work on Grandview Street
- **From 4am Saturday 12 November until 11pm Sunday 13 November**, we will be installing structural steel for the new lifts and carrying out electrical work on Grandview Street
- **From 4am Saturday 26 November until 10pm Sunday 27 November**, we will be carrying out electrical testing on the new high voltage power poles on Grandview Street.

At this stage, we also plan to work outside of standard construction hours on one night in November to allow for resurfacing work on the Pacific Highway, and one additional weekend in November to carry out electrical rectification work around the station precinct. We will notify you of the work dates once they are confirmed.

### Road closure on Grandview Street

Grandview Street, between Alma Street and Station Street, will be closed:

- from **12am Saturday 5 November until 11pm Sunday 6 November**
- from **4am Saturday 12 November until 11pm Sunday 13 November**
- from **4am Saturday 26 November until 10pm Sunday 27 November**.

A detour around our work area will be in place via Station Street and Alma Street. **Parking along Grandview Street will be removed** from 4pm Friday 5 November.

### Pacific Highway temporary car park closure

The Pacific Highway car park (please see the map on page 2) will be closed **from 7am Wednesday 2 November until 11pm Sunday 6 November**. This closure will allow for critical work on electrical infrastructure to be carried out safely. Traffic control will be in place to safely manage the work area during this period.

## How this work may affect you

We will be using a range of equipment including excavators, vacuum trucks, road saws, concrete trucks and pumps, elevated working platforms, jackhammers, grinders, cranes, and various hand and power tools.

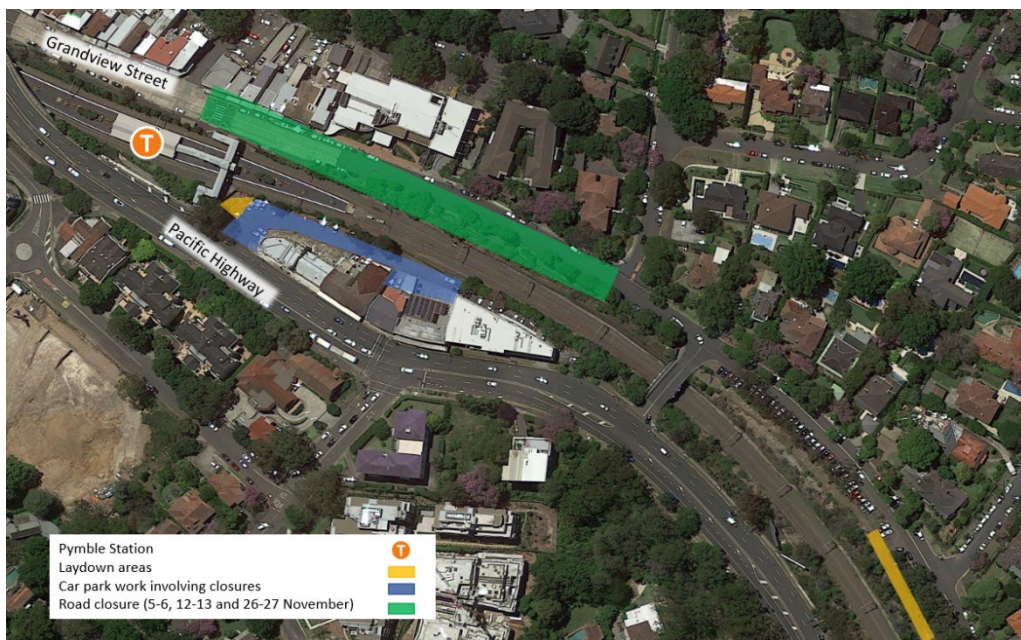
Our work will be noisy at times. Where possible, measures will be implemented to reduce noise and dust associated with these works, including adding shade cloth mesh to fencing, turning off equipment when not in use, placing equipment as far away as possible from properties and using non-tonal reversing beepers.

## Changes to scheduled work

Work schedules are subject to change due to permits, weather, and site conditions. Further notification will be provided should there be significant changes to the construction program.

**Please register for project updates** so that we can keep you informed about our work. If you require an alternative method of contact, please do not hesitate to let us know.

## Map showing work areas



### November 2022

Privacy: Transport for NSW (TfNSW) is subject to the Privacy and Personal Information Protection Act 1998 ("PIIP Act") which requires that we comply with the Information Privacy Principles set out in the PIIP Act. All information in correspondence is collected for the sole purpose of assisting in the delivery of this project. The information received, including names and addresses of respondents, may be published in subsequent documents unless a clear indication is given in the correspondence that all or part of that information is not to be published. Otherwise, we will only disclose your personal information, without your consent, if authorised by the law. Your personal information will be held by us at 27 Argyle Street, Parramatta. You have the right to access and correct the information if you believe that it is incorrect.

## Contact us

If you have any questions or would like more information, please contact our project team:

1800 684 490

[projects@transport.nsw.gov.au](mailto:projects@transport.nsw.gov.au)

[transport.nsw.gov.au/Pymble](https://transport.nsw.gov.au/Pymble)



## Translating and interpreting service

If you need help understanding this information, please contact the Translating and Interpreting Service on **131 450** and ask them to call us on **1800 684 490**.