

Transport Access Program

Pymble Station Upgrade

Transport for NSW | July 2022

The Pymble Station Upgrade is part of the Transport Access Program, an NSW Government initiative to provide a station that is accessible to people with a disability, limited mobility, parents/ carers with prams, and customers with luggage. We thank you for your patience during this important work.

What's next at Pymble in July?

Throughout July, work will include:

- constructing new lifts including installation of structural steel, lift roofs and canopies
- installing canopies on the station platform
- installing a new power pole within the rail corridor adjacent to the Pacific Highway
- installing new high voltage poles on Grandview Street between Station and Alma Streets
- installing a pad-mounted electrical transformer and high voltage pits within the Pacific Highway car park
- public domain works on Grandview Street and Pacific Highway including upgrades to footpaths, kerbs, and gutters

Please note, access will remain for pedestrians and motorists along Grandview Street and Pacific Highway while we carry out the public domain works, where possible.

Out of hours work in July

We will be working **across three weekends in July**.

From **6am Saturday 2 July to 10pm Sunday 3 July** and **6am Saturday 9 July to 10pm Sunday 10 July** we will be working in Pacific Highway car park installing new high voltage pits, an electrical culvert and a pad-mounted electrical transformer.

From **6am Saturday 23 July to 10pm Sunday 24 July** we will be working along Grandview Street installing high voltage electrical services and at Pymble Station installing structural steel onto the platforms.

Materials removed from the platform and car park excavations will be stockpiled within the rail corridor on Grandview Street, adjacent to Wellesley Road. Stockpiled materials will be removed from the rail corridor during standard construction hours 7am to 6pm Monday to Friday and 8am to 1pm Saturday.

Pacific Highway

Temporary car park closure

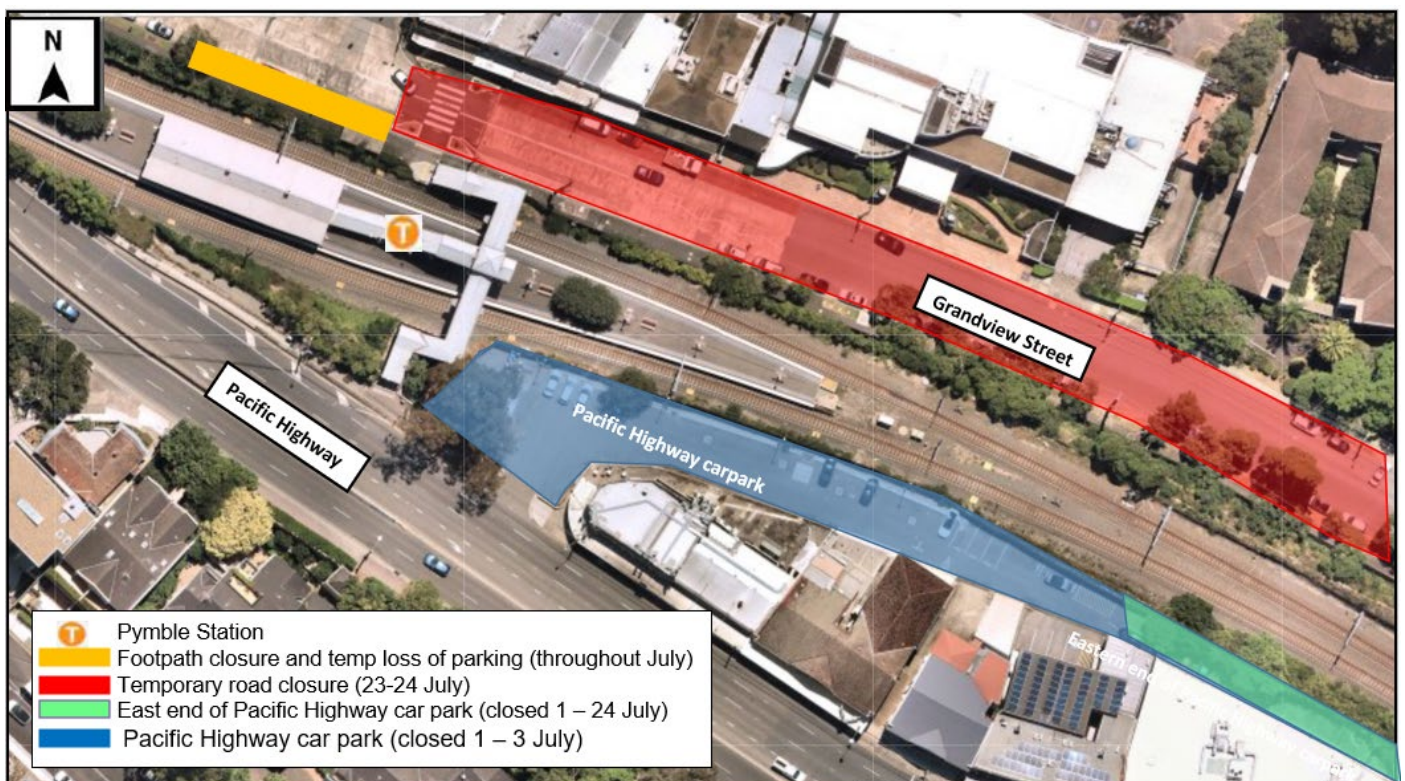
The Pacific Highway car park will be closed for two consecutive weekends:

- 6pm Friday 1 July to 6pm Sunday 3 July
- 6pm Friday 8 July to 6pm Sunday 10 July

This closure will allow for the installation of the new electrical pits, pad-mount, electrical conduits and culvert. We will also resurface all the excavated areas with asphalt.

The eastern end of the car park will remain closed from 4pm Friday 1 July to 6pm Sunday 24 July, resulting in a temporary loss of up to 11 car parking spaces.

Map showing work zones



Grandview Street

Temporary footpath closure and removal of parking

The footpath remains closed on Grandview Street between the station entrance and Alma Street while landscaping work takes place. Traffic control will be in place to direct pedestrians around the work area.

From around **4pm Friday 22 July to 10pm Sunday 24 July** parking on Grandview Street, between Station Street and Alma Street, will be removed to allow for a road closure. See below for more details.

Temporary road closure

Subject to works being completed during possessions, Grandview Street, between Station Street and Alma Street, will be closed from **11pm Friday 22 July to 10pm Sunday 24 July**, for the set-up of a mobile crane to install power poles and structural steel.

During this closure, shops along Grandview Street will remain open and pedestrian access will be maintained at all times. Under traffic control directions, safe residential access will be maintained. Traffic delays may be experienced, motorists are advised to allow additional time to travel through the area.

Map of diversion



Temporary closure of the station footbridge

The station footbridge will be closed from **Saturday 23 July to Sunday 24 July** to create a safe working distance between the public and our work area. Traffic control and signage will be in place to direct pedestrians.

How this work may affect you

Our work throughout July will use a range of equipment including excavators, vacuum trucks, road saws, tipper trucks, flatbed trucks, tilt trays, concrete trucks and pumps, elevated working platforms, lighting towers, dump trucks, work vehicles, augers, grinders, chain saws, chippers, cranes, and various hand and power tools.

Our work will be noisy at times. Where possible, measures will be implemented to reduce noise and dust associated with these works, including adding shade cloth mesh to fencing, turning off equipment when not in use, placing equipment as far away as possible from properties and using non-tonal reversing beepers.

Changes to scheduled work

Work schedules are subject to change due to permits, weather and site conditions. Further notification will be provided should there be significant changes to the construction program.

Contact us

If you have any questions or would like more on the Pymble Station Upgrade project, please contact us on:



1800 684 490



projects@transport.nsw.gov.au



transport.nsw.gov.au/Pymble



18 Lee Street, Chippendale NSW 2008
PO Box K659, Haymarket NSW 1240



If you need help understanding this information, please contact the Translating and Interpreting Service on **131 450** and ask them to call us on **1800 684 490**