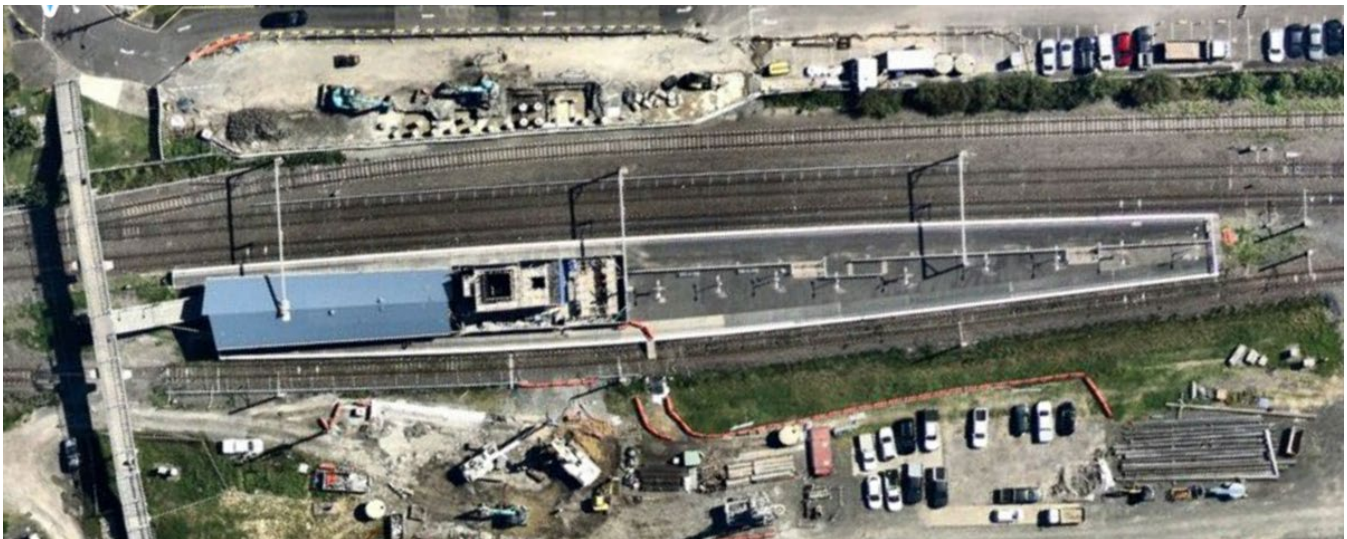


# Transport Access Program

## Unanderra Station Upgrade

Community notification | May 2022

The NSW Government is improving accessibility at Unanderra Station. This upgrade is being delivered as part of the Transport Access Program, an initiative to provide a better experience for public transport customers by delivering modern, safe, and accessible infrastructure.



*Pictured: A birds-eye view of the progress of the new footbridge foundations and lifts on both sides of the station and on the platform.*

### Completed work

During April, we started the second stage of work on the eastern side of Berkely Road for the new footbridge. We trimmed the footbridge and lift piles to have them all at the correct levels to install the new bridge. Excavation and concrete pours for the bridge footings continued.

### Upcoming work

In May, we will be working on both sides of the station and the platform.

We will be doing more foundation work for the footbridge, lift and stairs on the Berkely Road West side, waterproofing the lift pit, erecting scaffolding and carrying out temporary work.

On the platform, we will be working on formwork for the bridge and stair headstocks. A headstock is a concrete component of the bridge that transfers weight to the bridge piers.

On the Berkely Road East side, we will continue excavation and formwork for the bridge and lift foundations. We will trim piles to the correct levels, waterproof the lift pit, and erect scaffolding. Work will also begin in the cul-de-sac on the new kiss and ride zone.

## Working hours

Most of this work will occur during standard construction hours between **7am and 6pm on Mondays to Fridays** and **Saturdays from 8am to 1pm**.

To compensate for delays caused by COVID-19, wet weather, and ongoing industrial action, we will also be doing some work on weekends between **7am and 6pm on Saturdays** and **8am to 6pm Sundays**. The work has been assessed and will not create any excessive noise. *All work is dependent on weather and site conditions and is subject to change.*

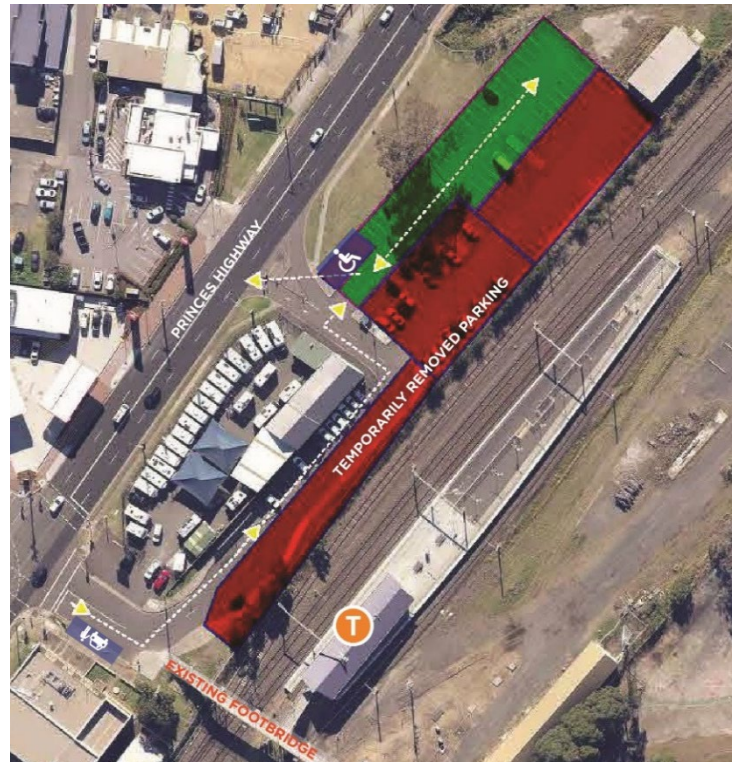
## Commuter car park

Between **Wednesday 8 June and Thursday 16 June**, there will be reduced available parking spaces as pictured on the right. This will allow for the delivery of bridge girders and structural steel canopy for the new footbridge, in readiness for the weekend trackwork.

Current signage in the commuter car park shows directions to the council car park on Central Road which we encourage you to use if the station car park is full.

Accessible parking spaces will remain where they are currently, with pedestrian access from the car park to the station via Princes Highway.

All vehicles will continue to enter the car park from the Princes Highway via Berkeley Road and exit directly onto the Princes Highway.



Available parking is highlighted green. The spaces shown in red will be closed. Accessible parking will stay where it is now.

## Contact us

If you have any questions or would like more information, please contact our project team:

Call the project information line: 1800 684 490

Email: [projects@transport.nsw.gov.au](mailto:projects@transport.nsw.gov.au)

Visit: [transport.nsw.gov.au/unanderra](https://transport.nsw.gov.au/unanderra)

Call the 24/7 construction response line: 1800 775 465



Translating and Interpreting Service

If you need help understanding this information, please contact the Translating and Interpreting Service on **131 450** and ask them to call us on **1800 684 490**.