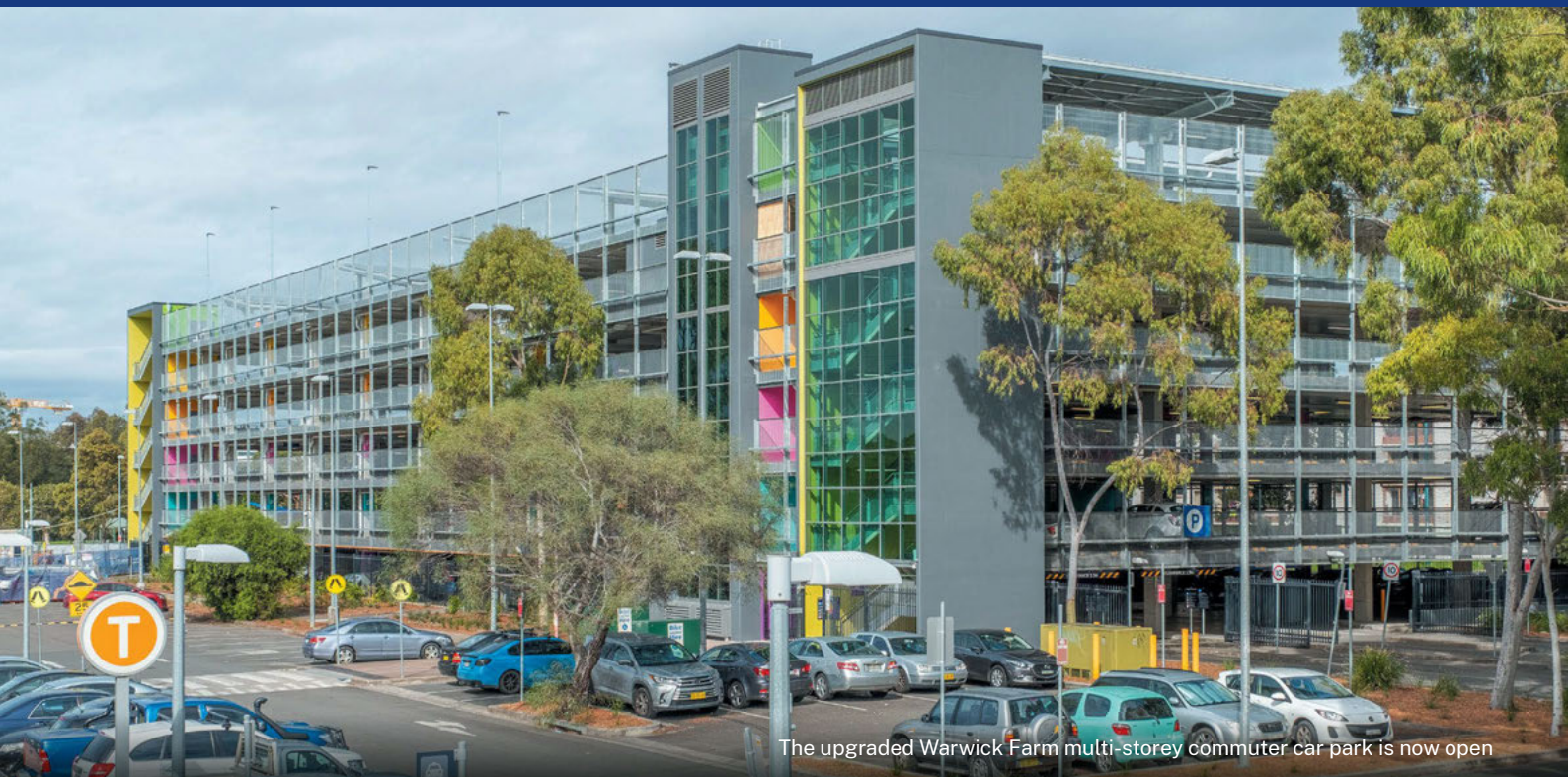


Warwick Farm

Commuter Car Park Program

April 2022



The upgraded Warwick Farm multi-storey commuter car park is now open

Two new levels are now open at Warwick Farm Commuter Car Park for transport customers

The project has been delivered as part of the NSW Government's Commuter Car Park Program, providing more convenient access to public transport at key interchanges and helping to ease congestion on our roads.

Key features of the upgraded multi-storey commuter car park include:

- two new levels providing over 250 additional parking spaces
- new and improved lifts and stairs
- additional accessible parking spaces
- solar panels on the rooftop level
- provision for future electric vehicle charging
- motorcycle parking bays
- CCTV, lighting and wayfinding signage for improved safety and security.

Transport Park&Ride boom gates will be installed and in operation in the near future, providing up to 18 hours of free parking each day. All you have to do is complete a public transport journey by tapping on and tapping off using an accepted Opal card or contactless credit/debit card. If using a contactless credit card or debit card on public transport, you will need to set up and link your vehicle and card details with a Transport Connect Account, visit <https://connect.transportnsw.info/login?returnUrl=%2F>.

For more information on Transport Park&Ride please visit <https://transportnsw.info/parkandride>



Key facts:



530 people worked
on the project



55,000 approx.
hours worked



49 tonnes of structural steel and
210 tonnes of reinforcing steel used



2,100 cubic metres
of concrete poured

Built with the environment in mind

The upgraded car park has been designed and built to reduce embodied carbon emissions and adapt to climate change. The features include:

- building the car park with an average of 30% low carbon concrete mixes, and an average of 70% recycled content in reinforced steel
- over 600 rooftop solar panels which provide power for the building and weather protection for commuters and parked cars
- provision for electric vehicle charging spaces in the future
- vegetation offsetting at Jacquie Osmond Reserve in alignment with the Cabramatta Creek Flying Fox Camp Management Plan.



The rooftop has over 600 solar panels

Upcoming work

In the coming months, you may notice some finishing work occurring within and around the commuter car park. Subject to approval, work activities may include:

- resurfacing of the existing commuter car park adjacent to the multi-storey car park, requiring temporary closure of parking spaces
- removal of site sheds and restoration work
- installation of public art.

We will keep the community informed about this work as it progresses.

Thank you for your patience and understanding while we completed this important project.

Contact us

If you would like to talk to the project team about the Warwick Farm Commuter Car Park or join the mailing list, please contact us:



1800 684 490



projects@transport.nsw.gov.au



transport.nsw.gov.au/warwickfarm



Translating and Interpreting Service

If you need an interpreter, please call the Translating and Interpreting Service (TIS National) on **131 450** and ask them to telephone Transport for NSW on 1800 684 490.

Arabic

إذا كنتم بحاجة إلى مترجم شفهي، يرجى الاتصال بخدمة الترجمة الخطية والشفوية (TIS National) على الرقم **131 450** واطلبوا منهم الاتصال هاتفياً بوكالة Transport for NSW على الرقم 1800 684 490.

Vietnamese

Nếu cần thông ngôn viên, xin quý vị gọi cho Dịch vụ Thông Phiên dịch (TIS Toàn quốc) qua số **131 450** và yêu cầu họ gọi cho Transport for NSW qua số 1800 684 490.

Hindi

इस दस्तावेज में आपके इलाके के सार्वजनिक-परिवहन परियोजनाओं के बारे में महत्वपूर्ण जानकारी सम्मिलित है। यदि आपको दुभाषि की सेवा की आवश्यकता है तो कृपया **131 450** पर टैन्सलैटिंग एन्ड इन्टरप्रेटिंग सर्विस से संपर्क करें और उनसे 1800 684 490 पर टैन्सपोर्ट फॉर एनएसडब्ल्यू को फोन करने के लिए कहें। उसके बाद दुभाषिया आपको अनुवाद करने में सहायता देगा।

Serbian

Ovaj dokument sadrži važne informacije o projektima koji se tiču javnog prevoza na vašem području. Ako vam je potreban prevodilac, pozovite Translating and Interpreting Service na **131 450** i zamolite ih da pozovu Transport for NSW na 1800 684 490. Prevodilac će vam zatim pomoći da obavite razgovor.