

Commuter Car Park Program: Warwick Farm

Community Notification – August 2022

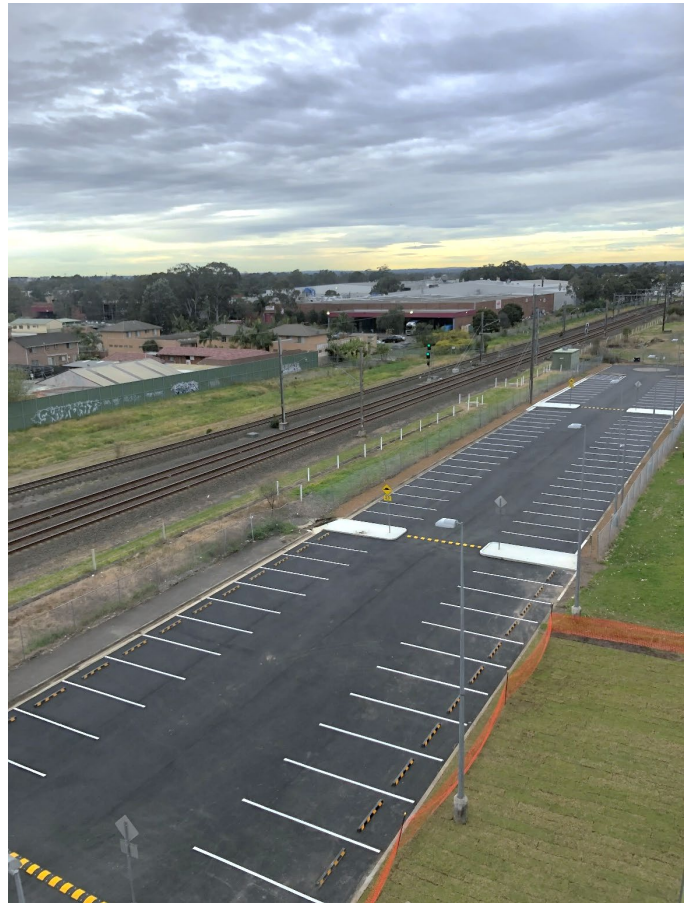
Transport for NSW has delivered 250 new car parking spaces for commuters at Warwick Farm Station as part of the NSW Government's Commuter Car Park Program. Construction is now complete on the multi-storey commuter car park at Warwick Farm Station and new levels are open.

[External commuter car park now open](#)

Repair and resurfacing work on the external commuter car park is now complete. Around 150 parking spaces are now reopened for use. Thank you for your patience and understanding while we completed this important work.



The external commuter car park at Warwick Farm Station is now open



Transport Park&Ride

Transport Park&Ride boom gates will be installed and in operation in the near future. Transport Park&Ride is designed to free-up more spaces at commuter car parks for those who want to travel on public transport.

Transport Park&Ride provides up to 18 hours free parking each day. All you have to do is complete a public transport journey by tapping on and tapping off using an accepted Opal card, or a credit/debit card or Opal card linked to a Transport Connect account.

Keeping you up to date

More information on the Warwick Farm Commuter Car Park project is available on our website www.transport.nsw.gov.au/warwickfarm. If you would like to sign up to our project distribution list, please contact us on 1800 684 490 or email projects@transport.nsw.gov.au and we will email you regular updates.



Translating and interpreting service

If you need help understanding this information, please contact the Translating and Interpreting Service on **131 450** and ask them to call us on **1800 684 490**.



August 2022
Pub No 22.186

Privacy Transport for NSW ("TfNSW") is subject to the Privacy and Personal Information Protection Act 1998 ("PPIP Act") which requires that we comply with the Information Privacy Principles set out in the PPIP Act. All information in correspondence is collected for the sole purpose of assisting in the delivery this project. The information received, including names and **addresses** of respondents, may be published in subsequent documents unless a clear indication is given in the correspondence that all or part of that information is not to be published. Otherwise we will only disclose your personal information, without your consent, if authorised by the law. Your personal information will be held by us at 27 Argyle Street, Parramatta. You have the right to access and correct the information if you believe that it is incorrect.