

Pymble Station Upgrade

Community notification February 2023

The Pymble Station Upgrade is part of the Transport Access Program, a NSW Government initiative to provide a station that is accessible to people with a disability, limited mobility, parents / carers with prams, and customers with luggage. We thank you for your patience during this important work.

What's next at Pymble in February?

Our work will include:

- landscaping and installing new furniture
- continuing work on the low voltage services
- installing new signage
- removing hoarding and fencing
- installing screens on the footbridge.

Upcoming work in February

Work will continue **Monday to Friday from 7am until 6pm**, and **from 8am to 1pm on Saturdays**.

We will be working outside of standard construction hours during the following periods:

- From **12am Saturday 4 February to 11pm Sunday 5 February** to allow for electrical work within the rail corridor to be carried out
- From **8pm Monday 20 February to 5am Wednesday 22 February** to carry out line marking and repainting of the pedestrian crossing on Grandview Street.

Our weekend work will be carried out during a Sydney Trains trackwork weekend where buses replace trains. For more information on replacement buses please visit transportnsw.info or call 131 500.

Grandview Street closure

Grandview Street between Station Street and Alma Street will be closed on the following dates to allow for work to be carried out safely:

- **Saturday 4 February**
- **Sunday 5 February**
- **Monday 20 February**
- **Tuesday 21 February**
- **Wednesday 22 February.**

A detour will be in place via Alma Street and Station Street. Parking along Grandview Street will be removed from **4pm Friday 3 February to 11pm Sunday 5 February**.

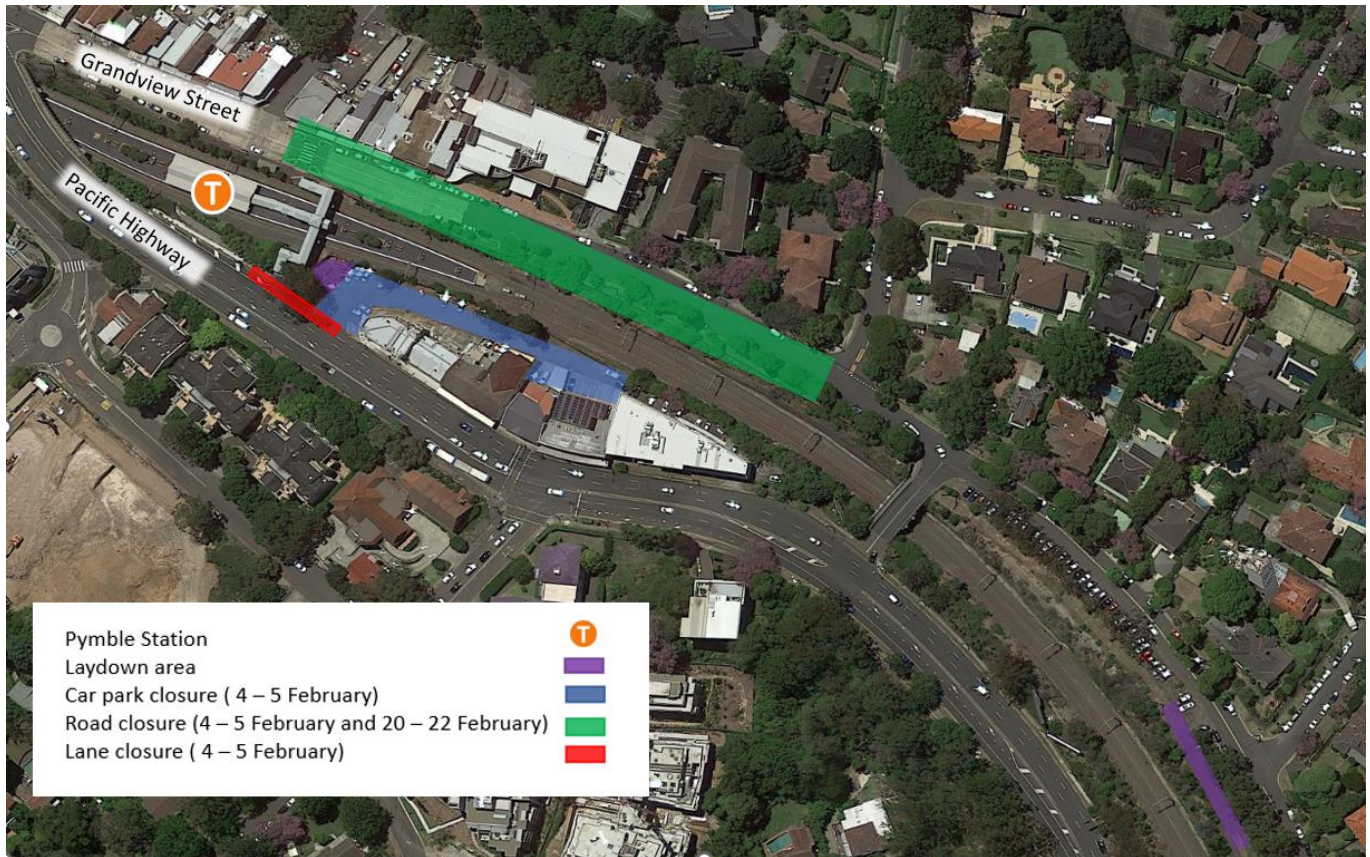
Pacific Highway car park closure

From **4am Saturday 4 February to 11pm Sunday 5 February**, the Pacific Highway car park will be temporarily closed.

Pacific Highway traffic lane closure

From **4am Saturday 4 February to 11pm Sunday 5 February**, the southbound kerbside lane on Pacific Highway will be closed to allow for plant and material to access in and out of the Pacific Highway car park.

Traffic control will be in place to manage pedestrians and vehicles safely around our work areas and around the closures outlined above.



How this work may affect you

We will be using a range of equipment including excavators, vacuum trucks, road saws, concrete trucks and pumps, elevated working platforms, jackhammers, grinders, cranes, and various hand and power tools.

Our work will be noisy at times. Where possible, measures will be implemented to reduce noise and dust associated with these works, including adding shade cloth mesh to fencing, turning off equipment when not in use, placing equipment as far away as possible from properties and using non-tonal reversing beepers.

Changes to scheduled work

Work schedules are subject to change due to permits, weather, and site conditions. Further notification will be provided should there be significant changes to the construction program.

Please register for project updates so that we can keep you informed about our work. If you require an alternative method of contact, please do not hesitate to let us know.

Contact us

If you have any questions or would like more information, please contact our project team:

1800 684 490

projects@transport.nsw.gov.au

transport.nsw.gov.au/Pymble

Translating and interpreting service



If you need help understanding this information, please contact the Translating and Interpreting Service on **131 450** and ask them to call us on **1800 684 490**