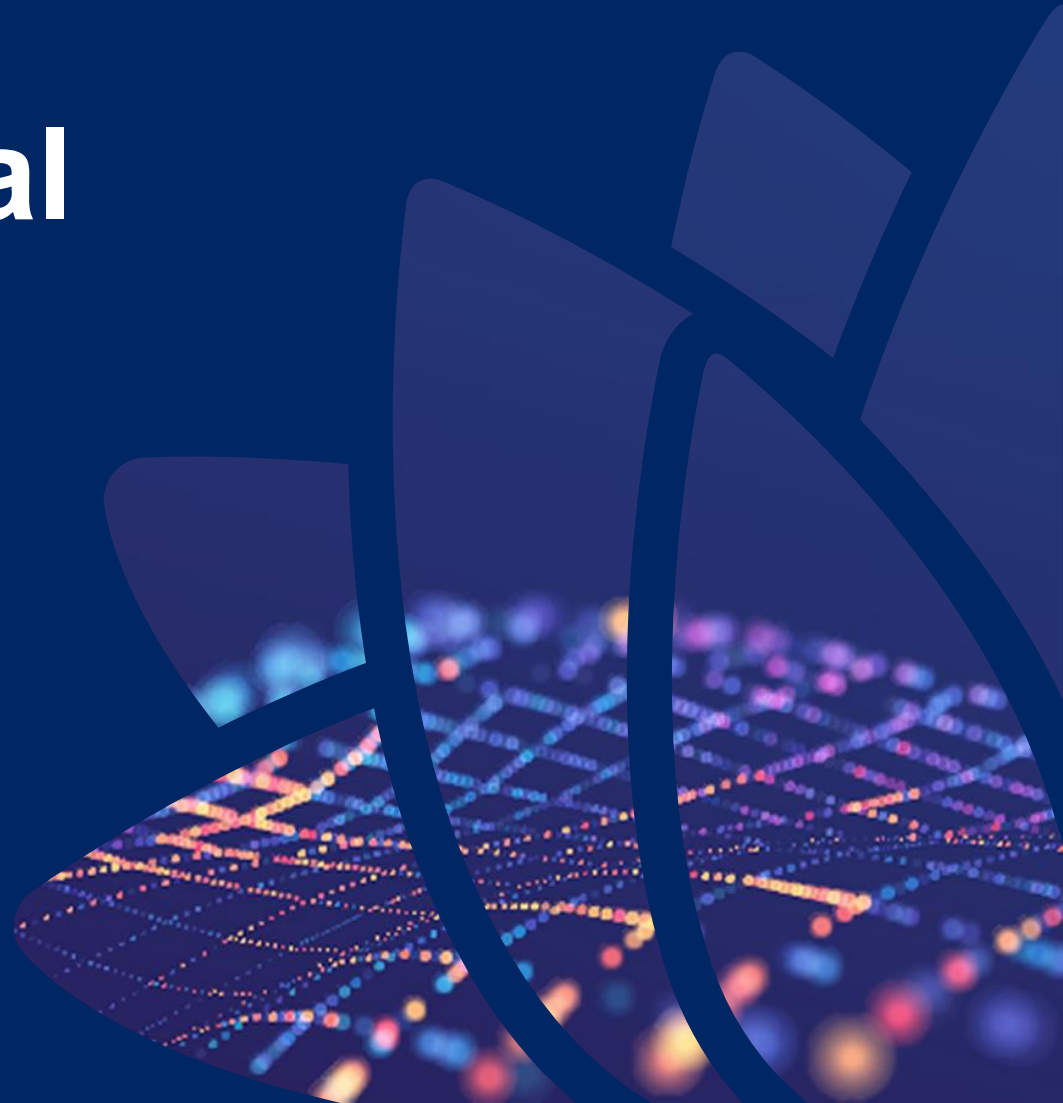


The Value of Geospatial Data

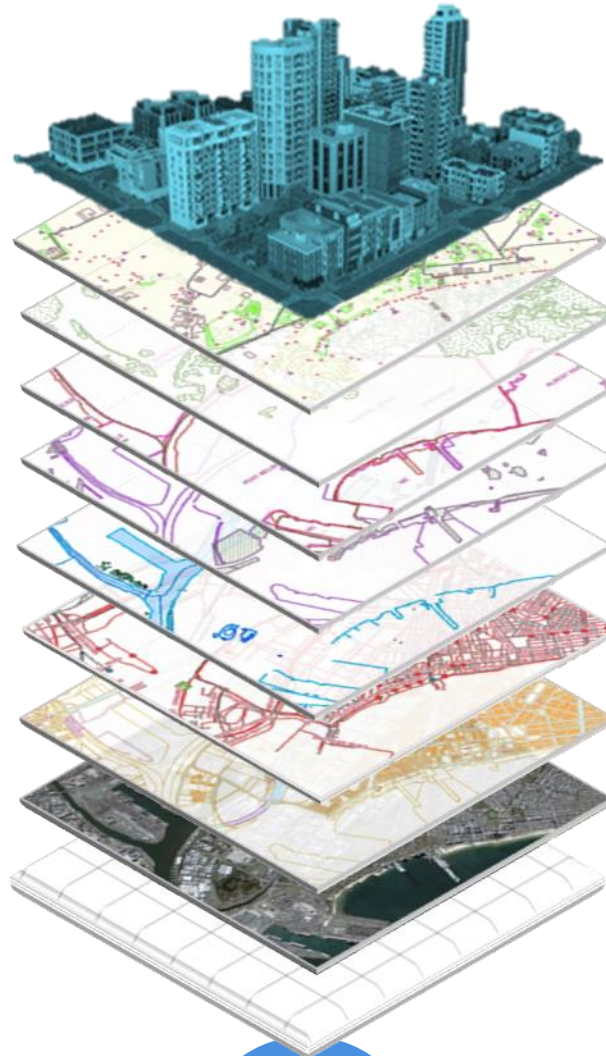
Live NSW

20th September 2023



Spatial data underpins all place-based decision making. It's regarded by the UN as essential for a successful economy, supporting countries to reach their Sustainable Development Goals.

FSDF modernisation = Standards based, 3D/4D, interoperable



BUILDINGS & SETTLEMENTS *

PHYSICAL INFRASTRUCTURE *

GEOLOGY & SOILS *

POPULATION

ELEVATION & DEPTH *

PLACE NAMES *

BOUNDARIES

WATER

ADDRESS *

TRANSPORT *

IMAGERY *

POSITIONING *

LAND PARCEL & PROPERTY *

LAND USE

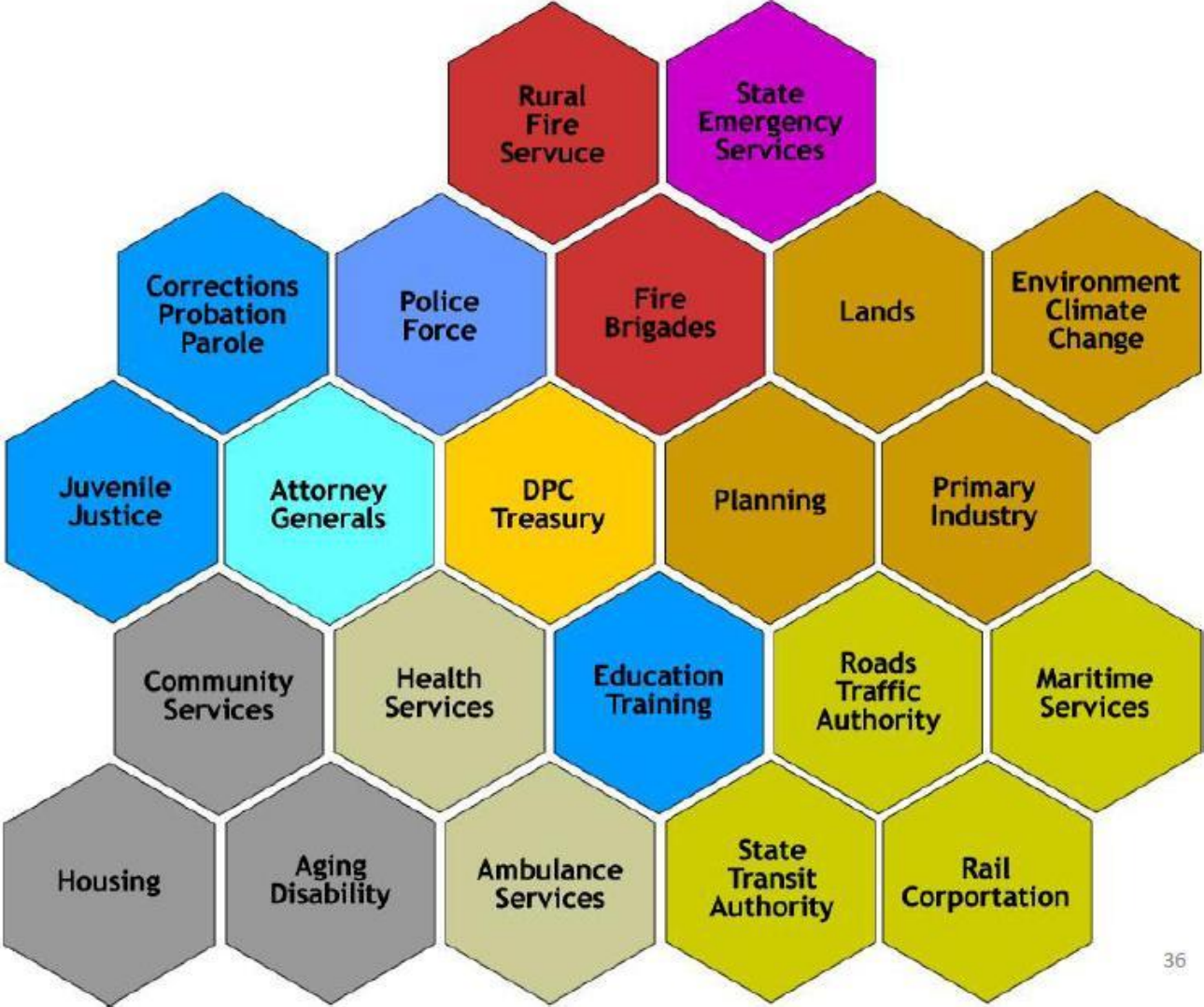
New themes; *new strategies or standards underway



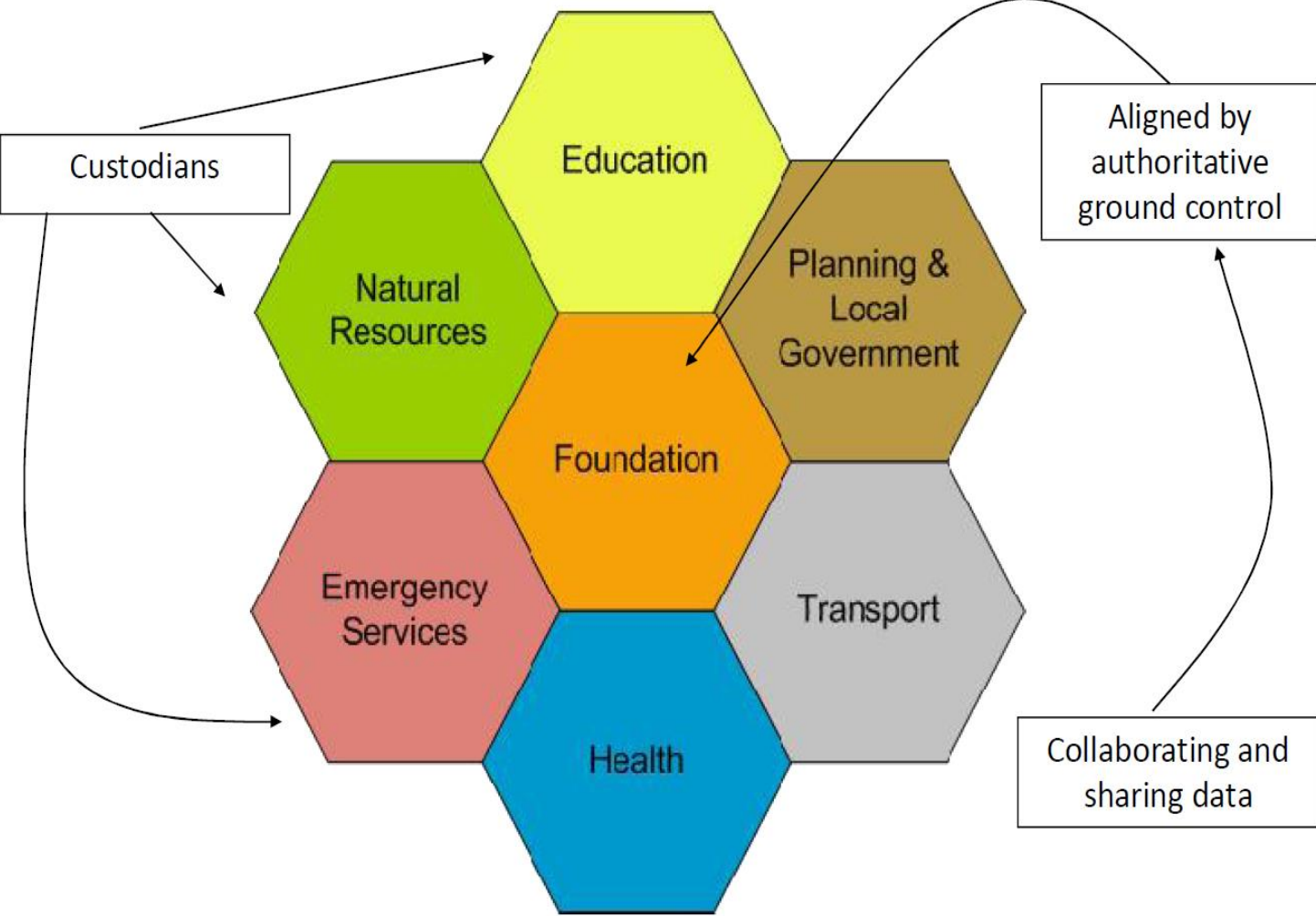
UN
GGIM



Agency Centric - Fragmented

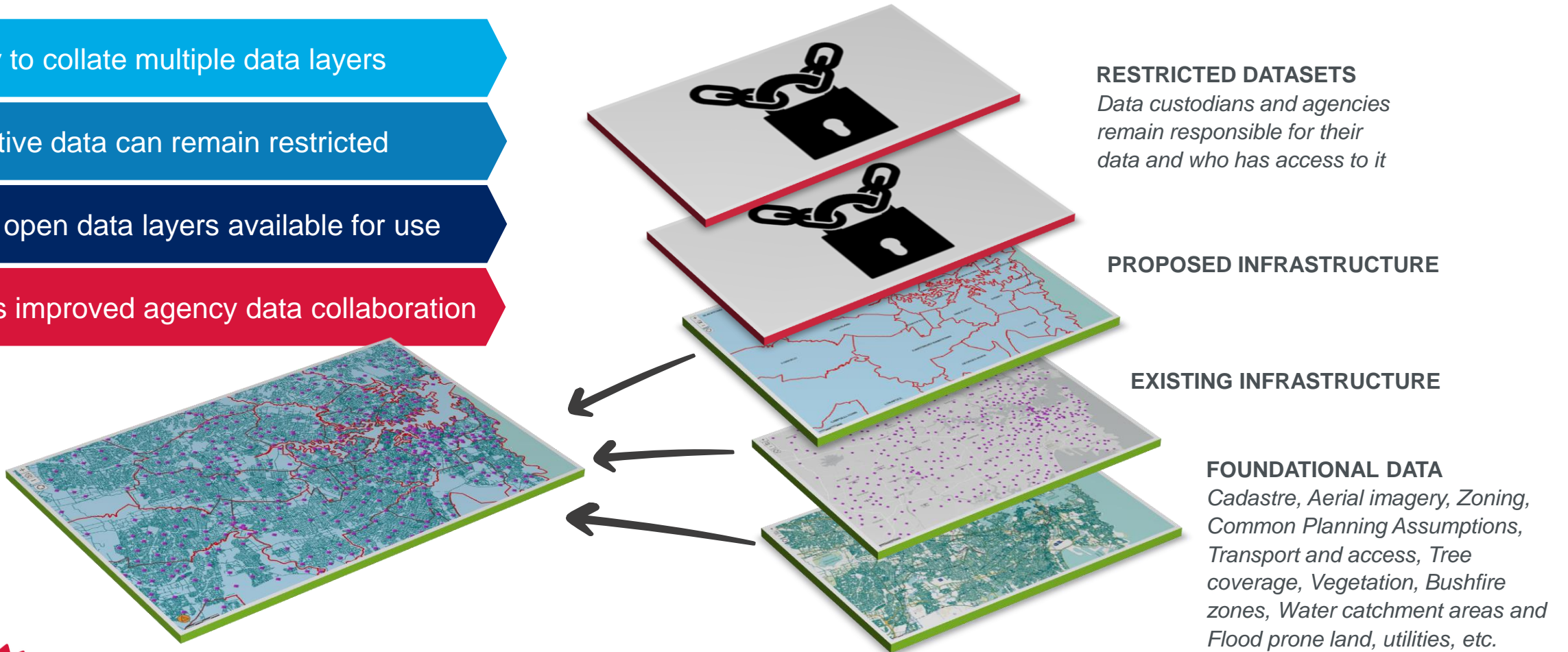


Whole of Government



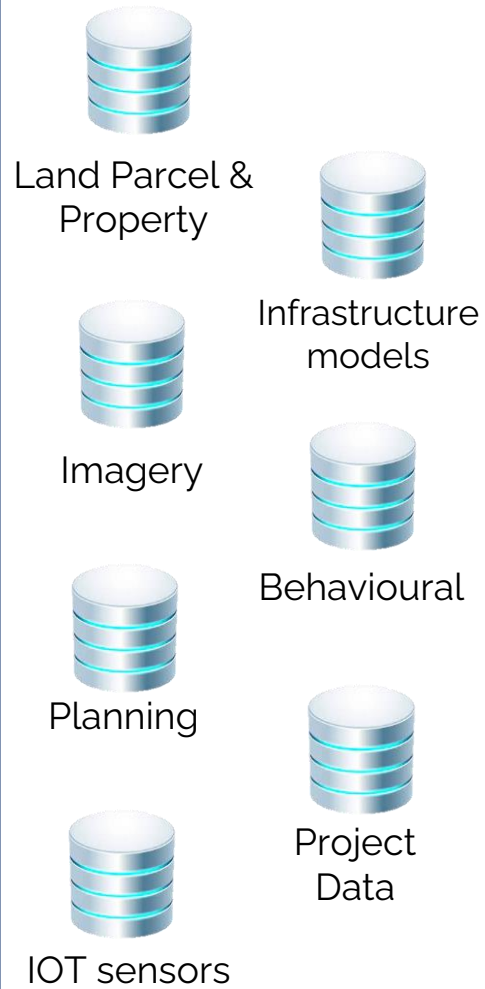
NSW SDT supports open, secure & restricted data

- Ability to collate multiple data layers
- Sensitive data can remain restricted
- Make open data layers available for use
- Allows improved agency data collaboration



The Ecosystem Vision

Federating Datasets



Live NSW



Localised Digital Twins



Physical Assets

Building

Infrastructure

Applications and Tools



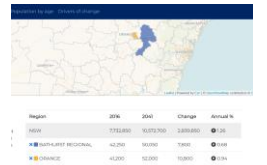
BIM/DE



GIS



Analytics



Insights



Asset Management

