

# Log into Traffic Studio via Single Sign On

## Quick Reference Guide

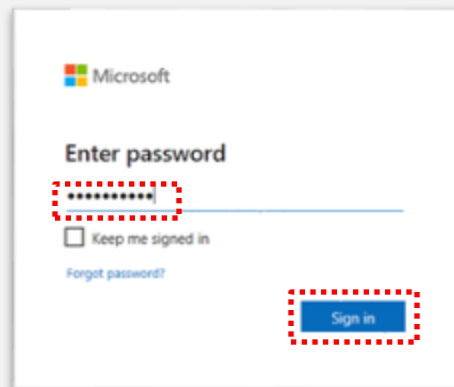
**01** Select **Get Started** in the email from **SmartIDConnect**



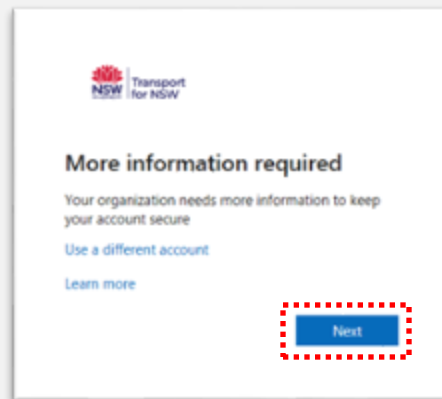
**02** Enter your email address and click **Next**



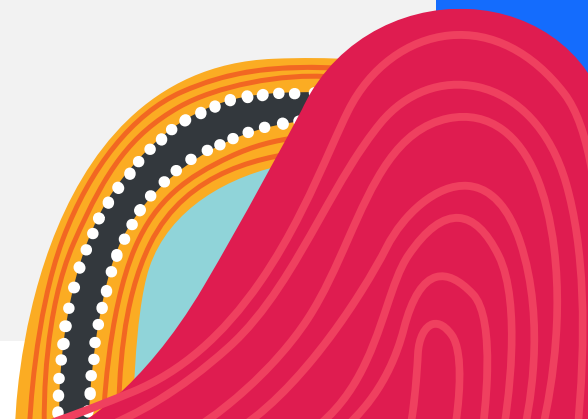
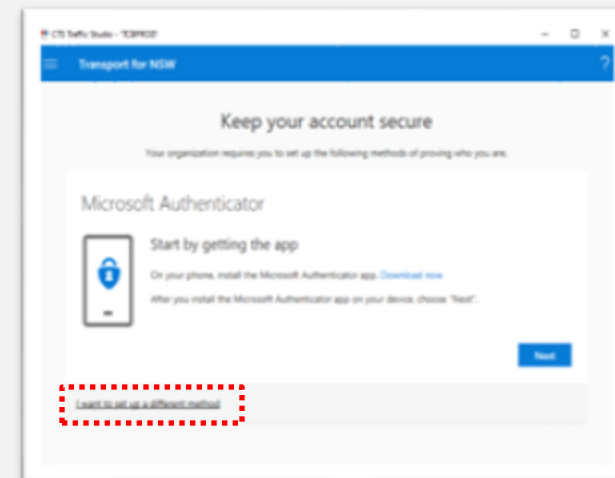
**03** Enter your password and click **Sign in**



**04** Click **Next**



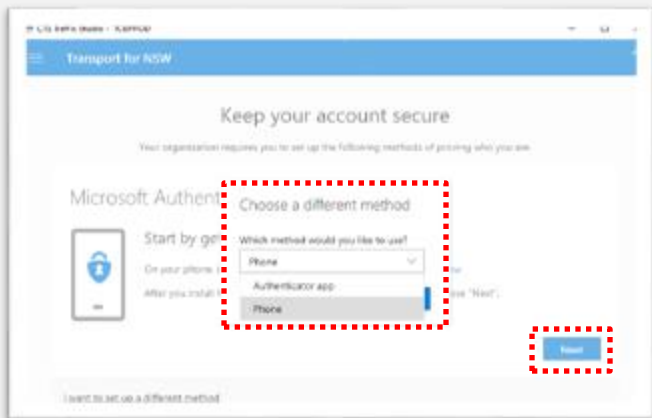
**05** Click **I want to set up a different method**



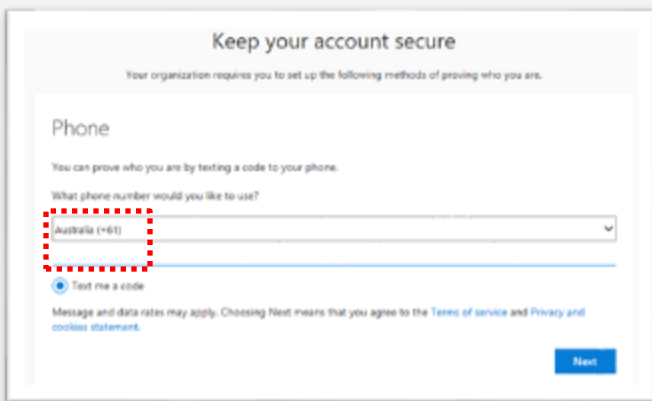
# Log into Traffic Studio via Single Sign On

## Quick Reference Guide

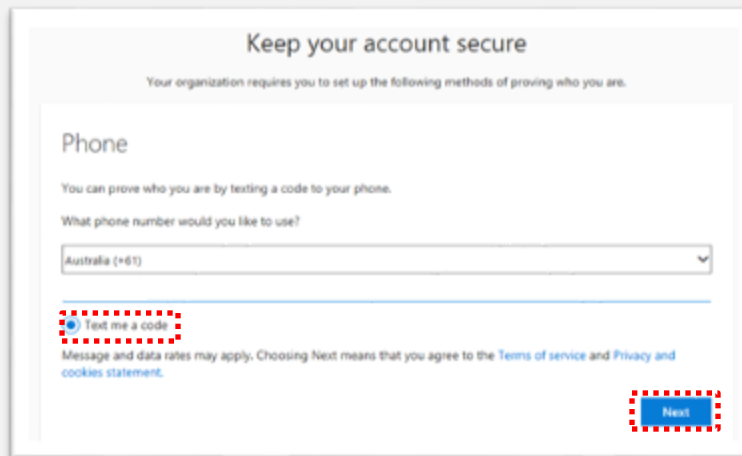
### 06 Select **Phone** and click **Next**



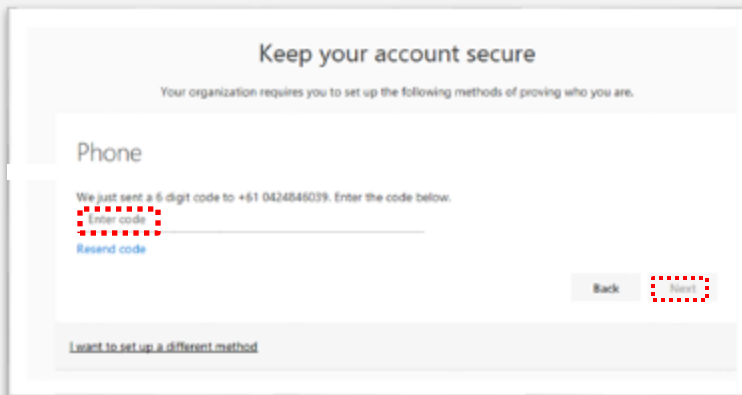
### 07 Select **Australia** and enter your mobile phone number



### 08 Select **Text me a code** and click **Next**



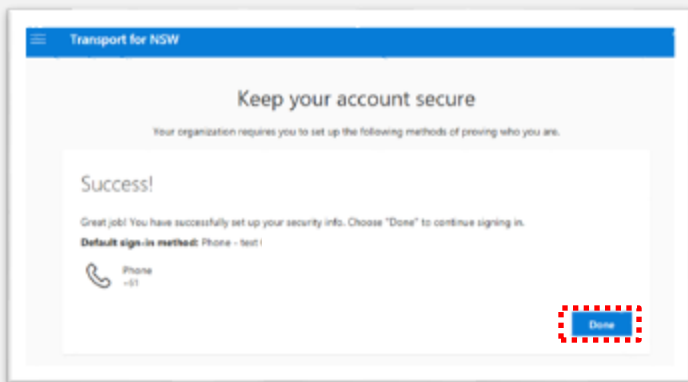
### 09 Enter the **code** from your mobile phone and click **Next**



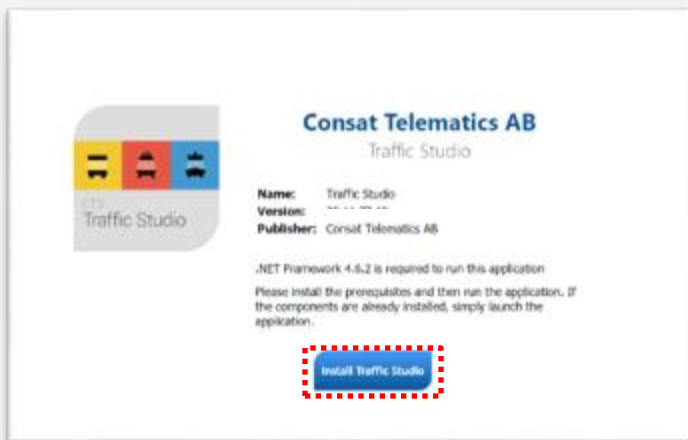
# Log into Traffic Studio via Single Sign On

## Quick Reference Guide

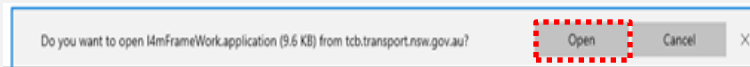
### 10 Click Done



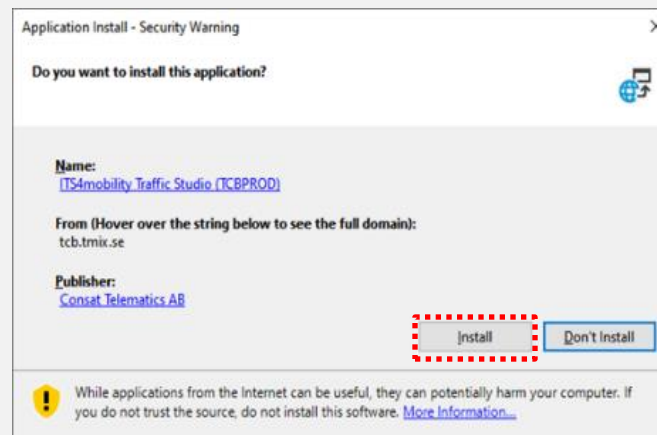
### 11 Click Install Traffic Studio



### 12 Open the I4mFrameWork.application, if requested



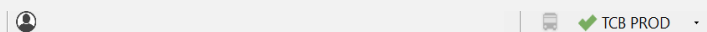
### 13 Click to install the application



If you encounter problems installing Traffic Studio, contact the TCB Program Team via [TCB.team@transport.nsw.gov.au](mailto:TCB.team@transport.nsw.gov.au).

## Verify the Installation

Once the Traffic Studio landing page has opened, check to see you are connected.



If the green tick is visible this means that you have successfully connected.



If you see a red/white cross this means that you have not been able to successfully connect.

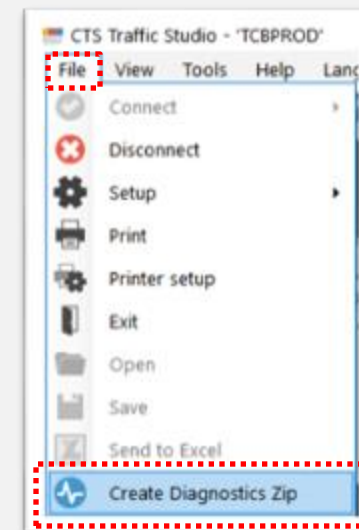
**Note:** If you see a spinning circle, it is still trying to connect.

If the connection does not work, open the **File** menu in the top left corner of Traffic Studio, click **Create Diagnostics Zip** and choose where to save the diagnostics file on your computer.

When the file diagnostic zip file is saved to your computer, attach that file to an email and send it to the TCB Team at

[TCB.team@transport.nsw.gov.au](mailto:TCB.team@transport.nsw.gov.au)

Assuming that the green tick is showing, indicating you have successfully connected, you can now use Traffic Studio.



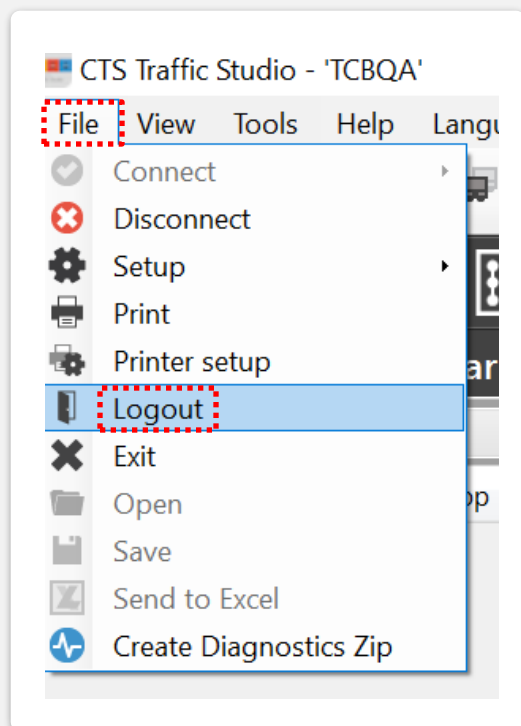
# Log into Traffic Studio via Single Sign On

Quick Reference Guide

## Single Sign Off

It is recommended that users who share their laptops with others sign out of Traffic Studio at the end of their session to prevent any unauthorised access by another user.

From Traffic Studio open the **File** menu in the top left corner of Traffic Studio, click **Logout**



Who do I contact if I have more questions?

If you have any questions or concerns, please send them to the TCB Program Team at [TCB.team@transport.nsw.gov.au](mailto:TCB.team@transport.nsw.gov.au).