

More Trains, More Services

Wolli Creek Power Supply Upgrade and Canopies projects



What are we doing in Wolli Creek?

Transport for NSW is building a new substation within the rail corridor to create the necessary power supply to support the increase in the number of trains travelling along the T8 Airport line in the future.

We are also extending the platform canopy at Wolli Creek Station to increase weather protection and encourage customers to use the full length of the platform, reducing crowding at busy times.

What happened last month?

During July, we continued the lighting upgrade work and began the service fit out on the platform, including seating and signage installation. Additionally the project team carried out the concrete pour for the transition pit.

What's planned next?

During August, our activities will include:

- service installations for Spark Lane
- vegetation removal
- concrete pour for the substation
- cable route construction

- trenching for utilities
- cable pulling
- fence post installation
- station lighting upgrade.

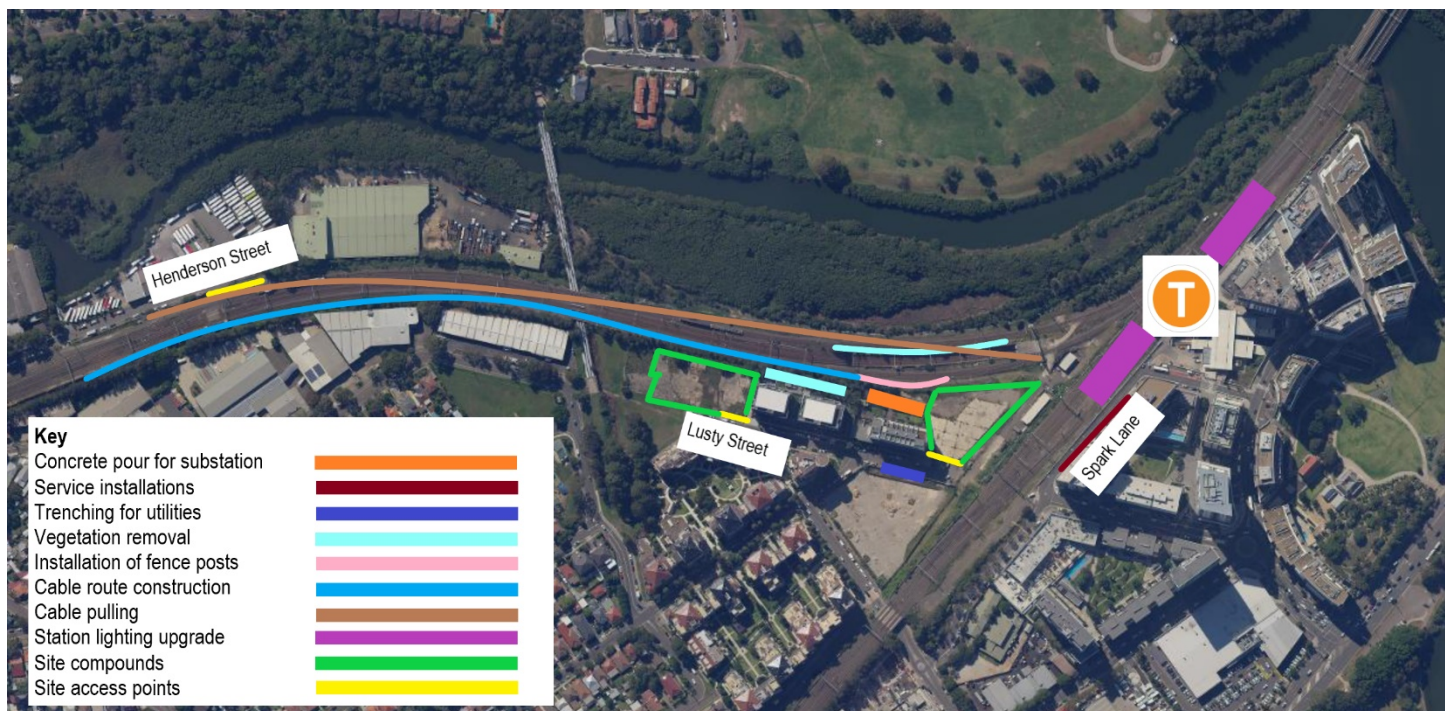
Are there activities planned outside standard construction hours?

Some construction work will also take place outside of standard construction hours inside the rail corridor from **5am, Saturday 21 August to 8pm, Sunday 22 August**.

When carrying out the concrete pour for the base of the substation, some deliveries may need to arrive outside standard construction hours. If this occurs outside of construction hours, we do not expect this work to be noisy.

When carrying out work in the T8 Airport Line Tunnels, the construction team will use the Henderson Street access point from **Monday 16 August through to Friday 20 August**, between 7pm and 5am.

This work is dependent on weather and site conditions and is subject to change.



How do we consider the community?

The project team understands construction activities may cause some disruption for the community and we will seek to minimise impacts as much as possible.

When carrying out our work, the project team utilises a noise assessment of the programmed activities to determine the noise to be generated and the appropriate mitigation measures to be put in place. We will also continue to ensure we adhere to strict environmental conditions relating to vibration and dust management.

Thank you for your understanding and patience while we complete this important work.

How are we staying safe?

In line with recent restrictions introduced by the NSW Government on 17 July 2021 to help keep our communities safe, construction activities on the Wollie Creek Power Supply Upgrade and Canopies Projects are paused until Friday 30 July. We are making arrangements for our work activities to safely recommence from 31 July 2021, as detailed in this notification. Should these restrictions change based on advice by the NSW Government, which may impact the timing of our work, the community will be notified. We encourage you to subscribe to our project email distribution for the latest information, by calling us on 1800 684 490 or emailing projects@transport.nsw.gov.au.

Where will work take place?

The above map shows the location of work inside the rail corridor with site access via Henderson and Lusty Streets.

Contact us

For more information or to subscribe for project updates:

 project information line: 1800 684 490

 24/7 construction response line:
1800 775 465

 projects@transport.nsw.gov.au

 www.transport.nsw.gov.au/mtms

Translation



If you require the services of an interpreter, please contact the Translating and Interpreting Service on 131 450 and ask them to contact Transport for NSW on 1800 684 490.

An interpreter will assist you with translation.