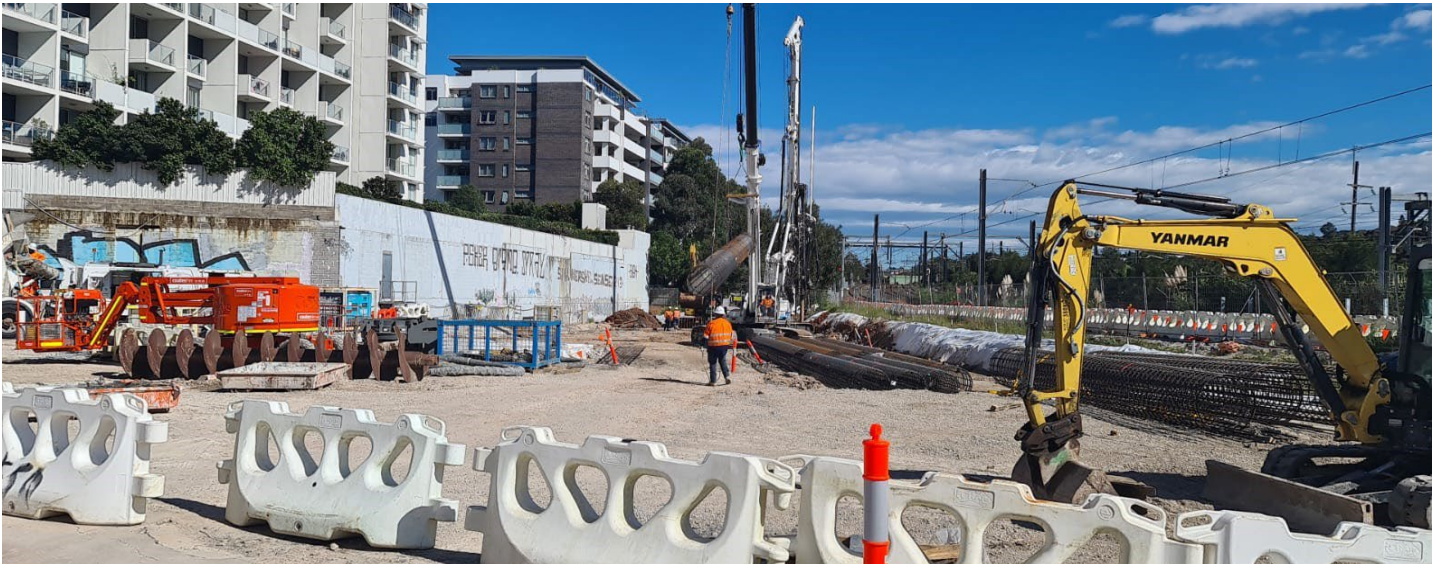


More Trains, More Services

Wolli Creek Power Supply Upgrade Project



What are we doing in Wolli Creek?

Transport for NSW is building a new substation within the rail corridor to create the necessary power supply to support the increase in the number of trains travelling along the T8 Airport Line in the future.

We are also extending the platform canopy at Wolli Creek Station to increase weather protection and encourage customers to use the full length of the platform, reducing crowding at busy times.

What happened last month?

During November, we carried out concreting and steelwork for the substation structure, cable route construction, drainage and signalling installations, and overhead wiring support work.

What's planned next?

In December and January, our activities will include:

- concreting for the structure of the substation
- installation of a watermain on Lusty Street
- stormwater and services connection between Lusty Street and the substation
- cable route construction
- structural work for the substation.

Are there activities planned outside standard construction hours?

Out of hours work on the water mains in Lusty Street has been rescheduled. Once the necessary approvals are in place to connect the water mains, we will contact the directly impacted residents.

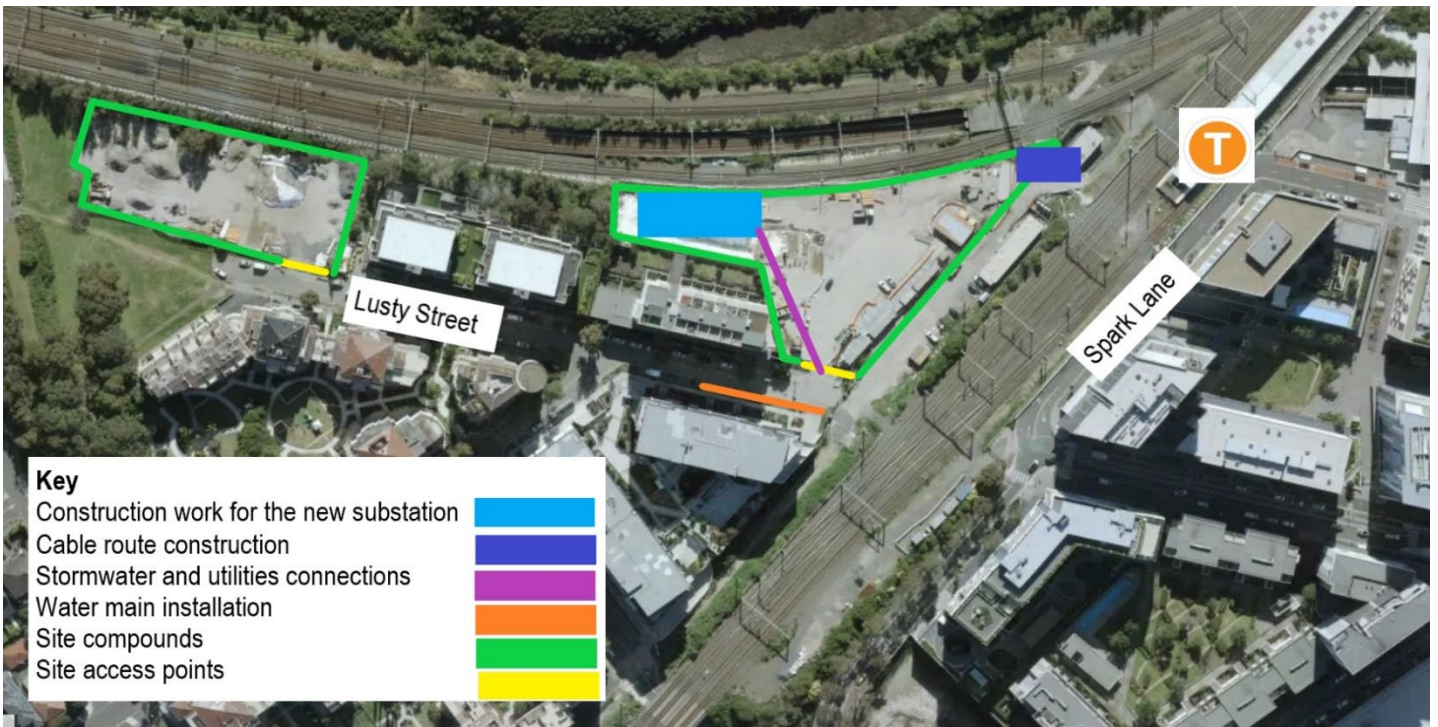
When carrying out the concrete pour for the structure of the substation, some deliveries may need to arrive outside standard construction hours. If this occurs outside of construction hours, we do not expect this work to be noisy.

What's planned over Christmas?

The Wolli Creek project team will finish work at our site on Friday 17 December and will resume work on Monday 10 January 2022.

During this period, site security will be in place.

Thank you for your patience during our works throughout 2021 and we wish you and your family a safe and happy holiday season.



Where will work take place?

The above map shows the location of work inside the rail corridor with site access via Henderson and Lusty streets.

How do we consider the community?

The project team understands construction activities may cause some disruption for the community and we will seek to minimise impacts as much as possible.

When carrying out our work, the project team utilises a noise assessment of the programmed activities to determine the noise to be generated and the appropriate mitigation measures to be put in place. We will also continue to ensure we adhere to strict environmental conditions relating to vibration and dust management.

Thank you for your understanding and patience while we complete this important work.

About More Trains, More Services

Over the next ten years the More Trains, More Services program will simplify and modernise the rail network so that customers can expect more frequent train services, with less wait times, less crowding and more seats on a simpler, more reliable network.

There's a lot of work happening

Currently there are multiple project teams, transport agencies and contractors working within the Wollie Creek rail corridor.

For more information on work completed by Sydney Trains, please contact 1300 656 999, or visit www.transport.nsw.gov.au/sydneytraincommunity.

Contact us

For more information or to subscribe for project updates:

 project information line: 1800 684 490

 24/7 construction response line:
1800 775 465

 projects@transport.nsw.gov.au

 www.transport.nsw.gov.au/mtms

Translation



If you require the services of an interpreter, please contact the Translating and Interpreting Service on 131 450 and ask them to contact Transport for NSW on 1800 684 490.

An interpreter will assist you with translation.

