

More Trains, More Services

Wolli Creek Power Supply Upgrade



What are we doing in Wolli Creek?

Transport for NSW is building a new substation within the rail corridor to create the necessary power supply to support the increase in the number of trains travelling along the T8 Airport Line in the future.

What's happened recently?

During December and January, we carried out concreting and structural installations for the substation structure, cable route construction, installation of a watermain on Lusty Street, and the connection of stormwater and services between Lusty Street and the substation.

What's planned next?

In February, our activities will include:

- roofing and structural installations for the substation
- stormwater and services connection between Lusty Street and the substation
- overhead wiring installations including protective screening at Wolli Creek train station
- cable installations on Spark Lane
- signalling installations.

Are there activities planned outside standard construction hours?

Some construction is planned to take place outside of standard construction hours inside the Wolli Creek rail corridor:

- Between **6am and 8am on Saturday 12 February and Sunday 13 February**
- Between **2am, Saturday 19 February through to 1am, Monday 21 February.**

This work will take place during a scheduled Sydney Trains trackwork period when no trains will be running. Scheduling work during Sydney Trains trackwork periods enables our team to complete essential activities safely inside the rail corridor.

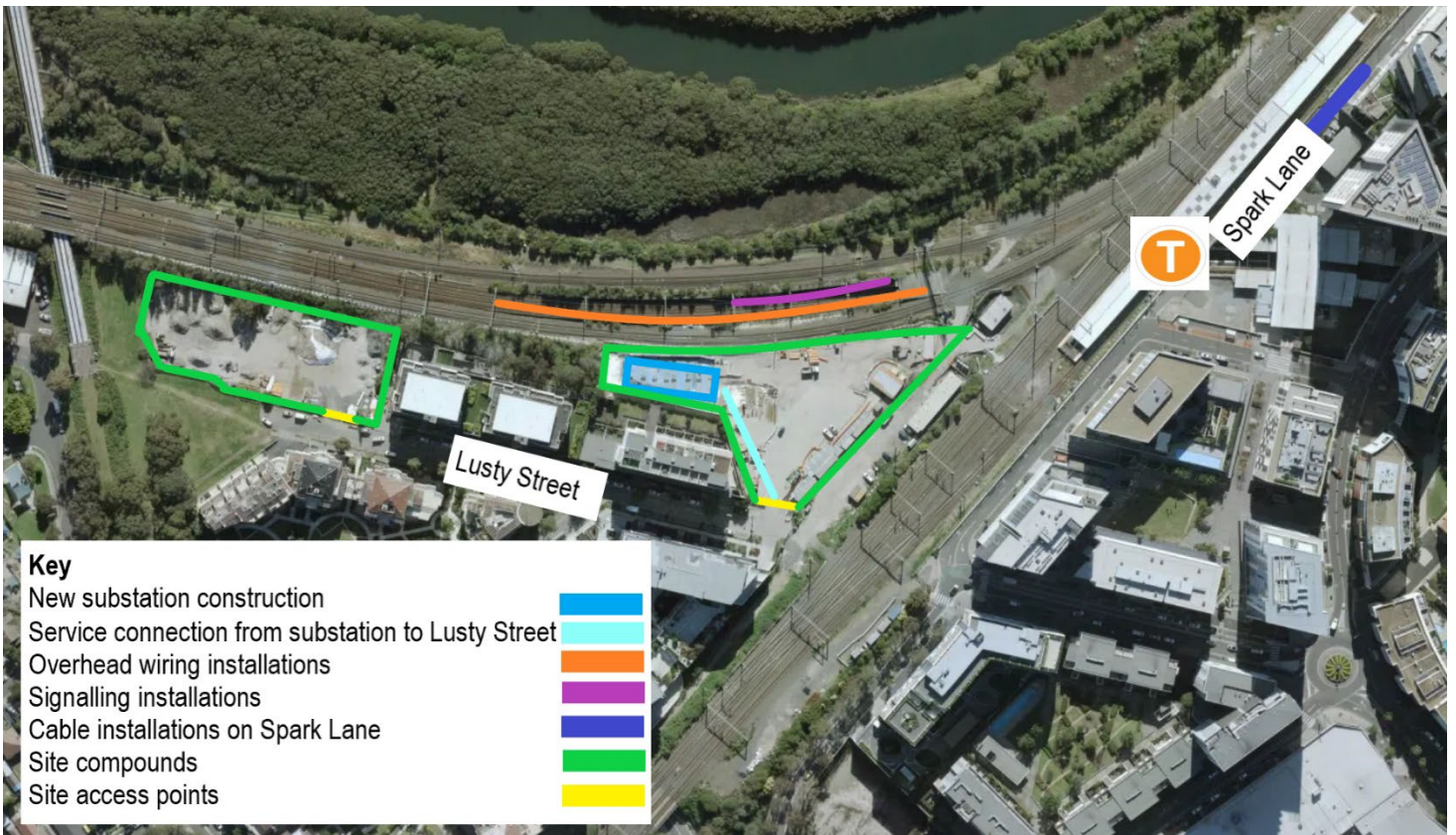
Please note that the project team will only be carrying out overhead wiring installations outside of standard working hours on Saturday 19 and Sunday 20 February. We do not expect this work to cause significant noise impacts for the area.

Scheduled work on Spark Lane

The Project Team will excavate a section of Spark Lane to install cables for the Wolli Creek rail corridor:

- Between 6am and 8pm, Saturday 12 February and Sunday 13 February.

Traffic control will be onsite to enable the safety use of Spark Lane for residents.



Where will work take place?

The above map shows the location of work inside the rail corridor with site access via Henderson and Lusty streets.

How do we consider the community?

The project team understands construction activities may cause some disruption for the community and we will seek to minimise impacts as much as possible.

When carrying out our work, the project team utilises a noise assessment of the programmed activities to determine the noise to be generated and the appropriate mitigation measures to be put in place. We will also continue to ensure we adhere to strict environmental conditions relating to vibration and dust management.

Thank you for your understanding and patience while we complete this important work.

About More Trains, More Services

Over the next ten years the More Trains, More Services program will simplify and modernise the rail network so that customers can expect more frequent train services, with less wait times, less crowding and more seats on a simpler, more reliable network.

There's a lot of work happening

Currently there are multiple project teams, transport agencies and contractors working within the Wollie Creek rail corridor.

For more information on work completed by Sydney Trains, please contact 1300 656 999, or visit www.transport.nsw.gov.au/sydtraincommunity

Contact us

For more information or to subscribe for project updates:

 project information line: 1800 684 490

 24/7 construction response line: 1800 775 465

 projects@transport.nsw.gov.au

 www.transport.nsw.gov.au/mtms

Translation



If you require the services of an interpreter, please contact the Translating and Interpreting Service on 131 450 and ask them to contact Transport for NSW on 1800 684 490.

An interpreter will assist you with translation.