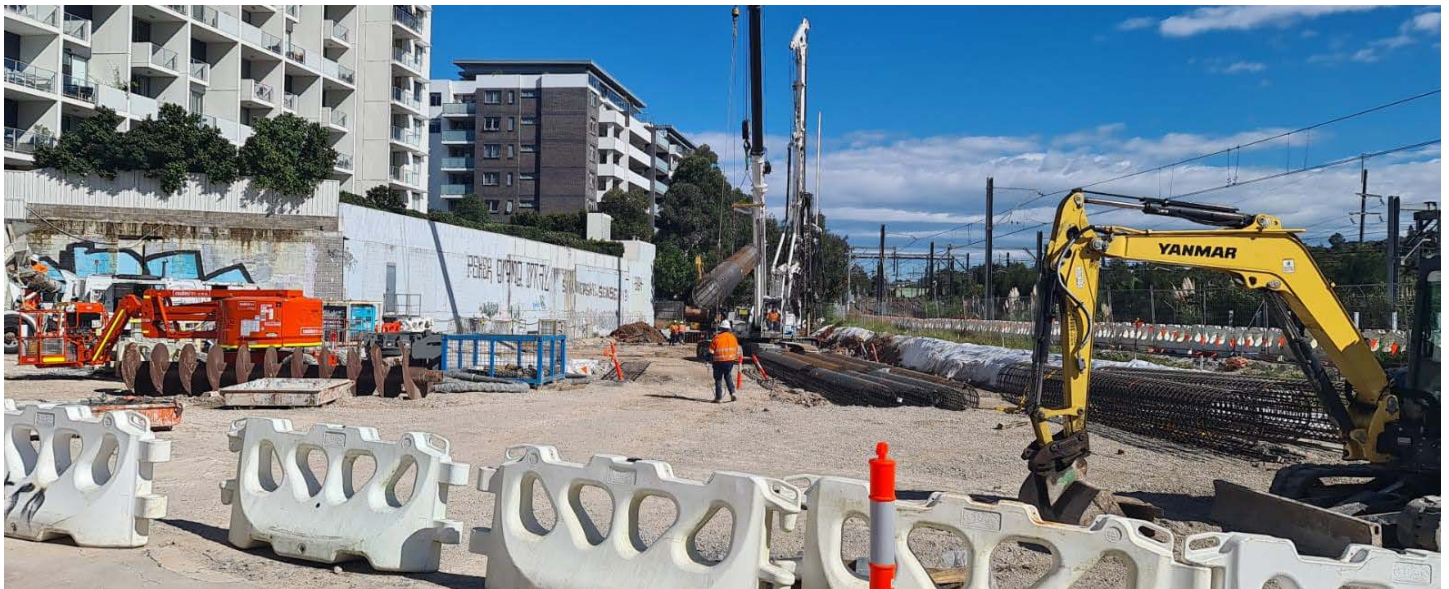


# More Trains, More Services

## Wolli Creek Power Supply Upgrade and Canopies projects



### What are we doing in Wolli Creek?

Transport for NSW is building a new substation within the rail corridor to create the necessary power supply to support the increase in the number of trains travelling along the T8 Airport line in the future.

We are also extending the platform canopy at Wolli Creek Station to increase weather protection and encourage customers to use the full length of the platform, reducing crowding at busy times.

### What happened last month?

During June, we started the substation structure, continued installation of sign posts, service utilities and cable route construction.

### What's planned next?

During July, our activities will include:

- concrete pouring of transition pit
- completion of the service utility installation near Sparks Lane.
- begin service fit out on the platform, including seating and signage installation
- continue lighting upgrade work.

### Are there activities planned outside standard construction hours?

To minimise disruption to customers, and to improve the safety of workers and the community, oversize delivery of rail equipment will take place on **Friday 9 July at 5am**.

This work will involve one truck delivering a crawler crane. The truck will arrive via the Lusty Street site compound entrance and don't expect this work to be noisy.

Some construction work will be completed outside of standard construction hours to enable the construction team to safely carry our essential activities inside the rail corridor.

When carrying out the concrete pour for the base of the substation, some deliveries may need to arrive outside standard construction hours. If this occurs after 6pm, we do not expect this work to be noisy.

This work is dependent on weather and site conditions and is subject to change.



**Key**

- Concrete pour for substation
- Service utility installation
- Site compounds
- Site access points

**How do we consider the community?**

The project team understands construction activities may cause some disruption for the community and we will seek to minimise impacts as much as possible.

When carrying out our work, the project team utilises a noise assessment of the programmed activities to determine the noise to be generated and the appropriate mitigation measures to be put in place. We will also continue to ensure we adhere to strict environmental conditions relating to vibration and dust management.

Thank you for your understanding and patience while we complete this important work.

**How are we staying safe?**

We continue to deliver projects across NSW while ensuring the safety of all staff and the community. In line with current Australian Government guidelines around slowing the spread of Coronavirus and social distancing, all work will be carried out at a safe physical distance where possible and necessary hygiene practices will be observed.

**Where will work take place?**

The above map shows the location of work inside the rail corridor with site access via Lusty Street.

**Contact us**

For more information or to subscribe for project updates:

 **project information line: 1800 684 490**

 **24/7 construction response line: 1800 775 465**

 **projects@transport.nsw.gov.au**

 **www.transport.nsw.gov.au/mtms**

**Translation**



If you require the services of an interpreter, please contact the Translating and Interpreting Service on **131 450** and ask them to contact Transport for NSW on **1800 684 490**.

An interpreter will assist you with translation.