

Wolli Creek Substation and T8 Line Power Supply Upgrade

Have your say



Over the next ten years the More Trains, More Services program will simplify and modernise the rail network, creating turn up and go services for many customers.

The More Trains, More Services program will deliver a rail network that will play its part in making Sydney a more productive and liveable city.

The current stage of the program will deliver improvements for the T4 Eastern Suburbs & Illawarra Line, South Coast Line and T8 Airport & South Line customers.

The first of the New Intercity Fleet trains will arrive in late 2019 and will enter service after extensive testing to ensure they are safe and comply with all relevant standards and requirements.

The 55-train fleet will provide improved safety, accessibility, comfort and modern features for customers, and will boost peak hour services on

the South Coast Line from 8 carriage trains to 10 carriages.

Upgrading the power supply will support the introduction of the new fleet of trains operating along the T8 Rail Line. It will also future-proof the connection to the Sydney Trains network, allowing more trains and services to be available to customers.

This newsletter provides an overview of the proposed project.

Transport for NSW is seeking feedback on the Wolli Creek Substation and T8 Line Power Supply Upgrade. See details overleaf on where to view the plans and how to have your say.

Wolli Creek Substation and T8 Line Power Supply Upgrade

The proposed program of work will provide new electrical infrastructure and upgrades to substations, section huts, overhead wiring and electricity feeder cables across the network to provide additional power to operate trains. This will improve service reliability by reducing the risk of disruption to rail services.

Upgrades to the power supply is proposed along the T8 Airport Line tunnel from Central through to Green Square and Wolli Creek.

Project overview

Transport for NSW is seeking feedback on the project's planning document, called a Review of Environmental Factors (REF) for the proposed project which includes:

Wolli Creek substation upgrades

- a new substation at Wolli Creek Junction
- decommissioning of the Undercliffe Substation and Wolli Creek Sectioning Hut
- upgrading an access way to the new substation and truck turning bay at the northern end of Lusty Street.

T8 Line infrastructure upgrades

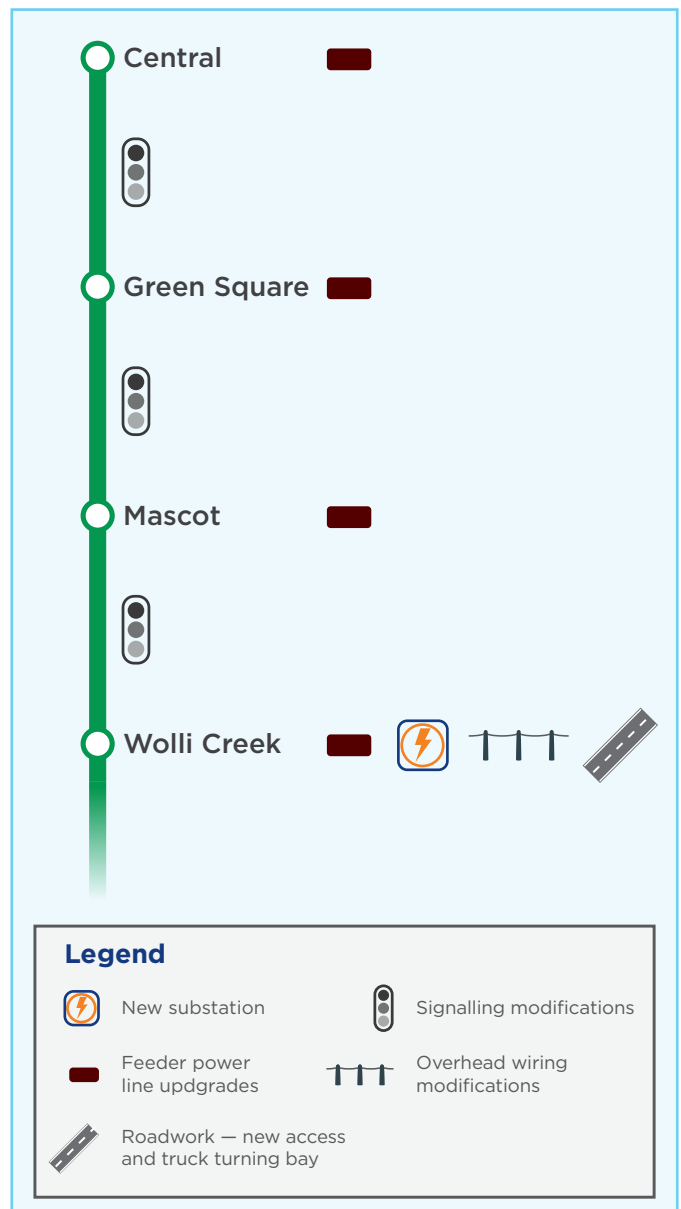
- installation and modification of new power supply cables throughout the T8 Line Airport tunnel from the Chalmers Street substation through to Green Square, Mascot and Wolli Creek stations.
- installation of a new power supply cable between Chalmers Street Substation and the Rail Operations Centre
- 6km of upgraded overhead wiring in T8 Line Airport tunnel
- Signalling system upgrades in T8 Line Airport tunnel.

Why do we need a substation at Wolli Creek?

The substation at Wolli Creek is needed to power more train services on the T8 rail line. The location was carefully chosen based on the availability of land in the rail corridor and proximity to the station. The substation has been designed to minimise visual impact to local residents and the surrounding community.

The substation will include a basement and ground floor with an outdoor yard to accommodate equipment that moderates currents flowing through the power system.

The access way to the substation will be used to service equipment.



Protecting our environment

As part of the planning process a number of assessments have been carried out to understand potential impacts on the environment and surrounding community. These include traffic and transport, visual amenity, noise and vibration, heritage, environmental and electric and magnetic field assessments which are outlined in the REF and have been undertaken in accordance with relevant legislation. The works proposed by this project are detailed in the report. Most of the work will occur in the rail corridor, with the exception of Green Square where work will be done in both RailCorp owned land and publicly owned roads and footpaths.

How will the project be delivered?

Subject to planning approval, construction would start in early 2020 and take approximately three years to complete. Every effort would be made to minimise construction impacts and we will keep the community and customers informed before any activities take place.

Construction approach

Most of the work would be done during standard construction hours:

- 7.00 am to 6.00 pm Monday to Friday
- 8.00 am to 1.00 pm Saturdays
- no work on Sundays or public holidays.

Work would also need to occur during pre-existing and scheduled Sydney Trains trackwork weekends/shutdown periods to ensure the safety of customers and staff and to minimise disruption.

Out of hours works may also be scheduled outside rail shutdown periods. The community would be notified in advance of any out of hours work.

How the energy network powers our trains and systems



General power source provided from an established location (eg substation)

Power cable connects substation to rail substation via underground pipes or power poles

Rail substation provides power supply via cable into the rail corridor

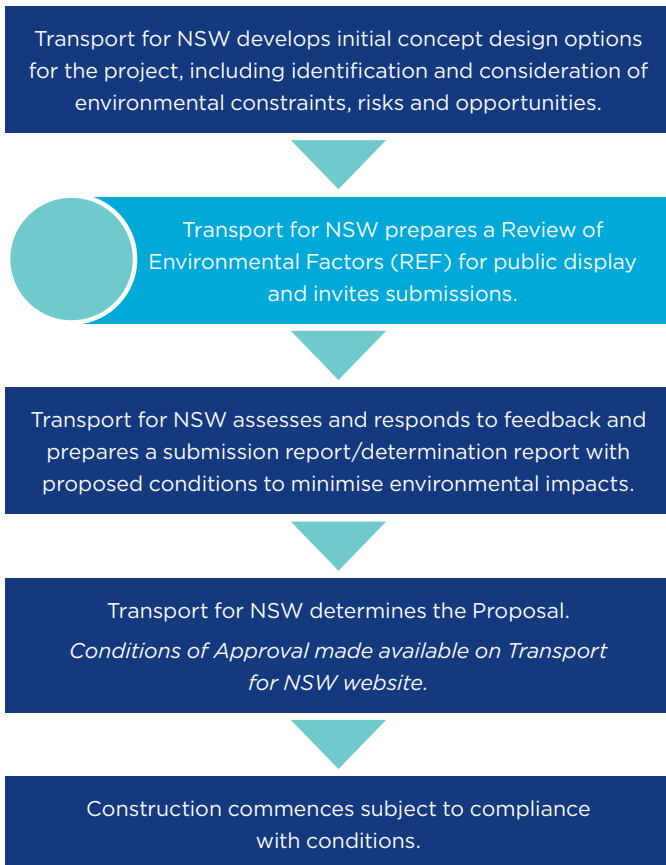
Safe and reliable power distributed to stations, signals and other rail infrastructure

Power supply is converted and transferred to overhead wiring to power trains

Review of Environmental Factors

The Review of Environmental Factors (REF) is a planning document outlining the proposed work, potential impacts and mitigation measures.

The document includes comprehensive assessments on the existing environment and expected impacts of the project on areas including: heritage, traffic and transport, visual impact, noise and vibration.



View the plans

You can view the Review of Environmental Factors at:

- transport.nsw.gov.au/projects/mtms
- nsw.gov.au/improving-nsw/haveyoursay
- **Arncliffe Library**, 11 Firth Street, Arncliffe
- **Transport for NSW**, 241 O'Riordan Street, The Gateway, Mascot

Have your say

The REF is on public display from **Wednesday 27 November to Wednesday 11 December 2019**. Feedback received during the public display will help Transport for NSW understand what is important to the community. It will also help in preparing plans for managing impacts during construction. Please provide your feedback via:

- projects@transport.nsw.gov.au
- **More Trains, More Services — Wolli Creek Substation and T8 Line Power Supply Upgrade**
Associate Director — Environmental Impact Assessment
Locked Bag 6501
St Leonards NSW 2065

Please provide feedback by **5pm, 11 December 2019**.

Meet the project team

To speak with the project team drop in at the following locations:

Wolli Creek Station, Brodie Spark Drive, Wolli Creek
Wednesday 4th December, 4pm – 6pm.

Transport for NSW welcomes your feedback. If you would like to ask further questions about the REF, make a submission or join the mailing list, please contact us using the details below:

- phone **1800 684 490**,
- email projects@transport.nsw.gov.au or
- visit transport.nsw.gov.au/mtms

Next steps

Feedback received in response to the Review of Environmental Factors will be considered and addressed in a Determination Report. The report will be prepared by Transport for NSW and we will let the community know as soon as the report is available to view on our website.

Major construction will only start once all approvals have been finalised and a determination on the Project has been made by Transport for NSW.



This document contains important information about public transport projects in your area. If you require the services of an interpreter, please contact the Translating and Interpreting Service on **131 450** and ask them to call Transport for NSW on **(02) 9200 0200**. The interpreter will then assist you with translation.