

More Trains, More Services

Wolli Creek Power Supply Upgrade Project

Transport for NSW | June 2022

What are we doing?

Transport for NSW is building a new substation within the rail corridor to create the necessary power supply to support the increase in the number of trains travelling along the T8 Airport Line in the future.

What's been happening?

In May we carried out the following activities:

- Continued building the new substation including cabling, electrical, and structural installations
- Delivery and installation of power transformers for the substation
- Cable installations near Spark Lane
- Overhead wiring, signalling and track installation inside the rail corridor
- Drainage work.

What's planned next?

- In June we will continue to build the new substation including cabling, electrical, and structural installations.

When will work take place?

Standard construction hours are **7am to 6pm Monday to Friday and 8am to 1pm on Saturdays.**

Some low-impact work to install new switchboards inside the substation will take place outside of these hours **between 7am and 6pm** on:

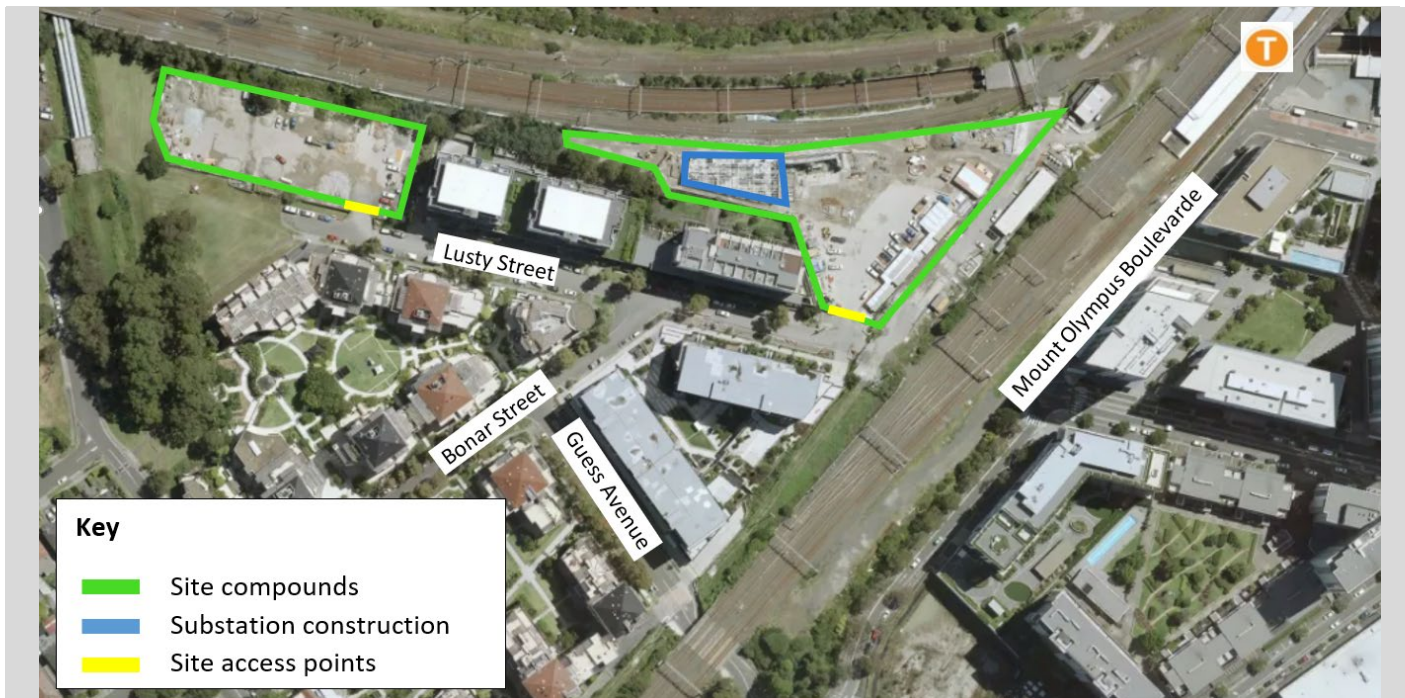
- **Saturday 4 June**
- **Saturday 11 June**
- **Saturday 25 June**

This work is not expected to be noisy, however you may notice our workers as they will utilise the onsite facilities and staff parking inside the compound at 5A Lusty Street during this work.

We will seek to minimise impacts as much as possible.



In May, the substation power transformers were delivered and placed in position for future cable connection



Where will work take place?

The map (above) shows the work area inside the main site compound of 5A Lusty Street.

The project team will continue to utilise the site compounds for deliveries, storage of materials and equipment, offices, pre-start work meetings and worker parking.

How do we consider the community?

The project team understands construction activities may cause disruption for the community. We will seek to minimise impacts as much as possible and adhere to strict environmental conditions relating to noise, vibration and dust management.

How are we staying safe?

We continue to deliver projects across NSW while ensuring the safety of all staff and the community. All work will be carry out in line with current Australian Government guidelines around slowing the spread of COVID-19.

There's a lot happening

Currently there are multiple project teams, transport agencies and contractors working within the Wolli Creek rail corridor. For more information on work being completed by Sydney Trains, please phone **1300 656 999** or visit www.transport.nsw.gov.au/sydneytraincommunity.

Contact us

If you have any questions or would like more on the More Trains, More Services project please contact our project team:



1800 684 490



projects@transport.nsw.gov.au



www.transport.nsw.gov.au/mtms



Level 5, 15 Bourke Road
Mascot NSW 2020



If you need help understanding this information, please contact the Translating and Interpreting Service on 131 450 and ask them to call us on 1800 684 490.

June 2022

Privacy Transport for NSW (TfNSWS) is subject to the Privacy and Personal Information Protection Act 1998 ("PIIP Act") which requires that we comply with the Information Privacy Principles set out in the PIIP Act. All information in correspondence is collected for the sole purpose of assisting in the delivery of this project. The information received, including names and addresses of respondents, may be published in subsequent documents unless a clear indication is given in the correspondence that all or part of that information is not to be published. Otherwise we will only disclose your personal information, without your consent, if authorised by the law. Your personal information will be held by us at 27 Argyle Street, Parramatta. You have the right to access and correct the information if you believe that it is incorrect.