

More Trains, More Services

Wolli Creek Power Supply Upgrade Project

Transport for NSW | September and October 2022

What are we doing?

Transport for NSW is building a new substation within the rail corridor to create the necessary power supply to support the increase in the number of trains travelling along the T8 Airport Line in the future.

What's been happening?

In August we continued to build the new substation and upgrade the surrounding area. The works involved installation of an access road to the substation, along with new asphalt and landscaping. The project team also installed new electrical cables inside the rail corridor and fencing along the boundary of the rail corridor.

Due to external factors outside our control, a portion of the planned out-of-hours work was postponed. We apologise for any inconvenience and will let you know once the work has been rescheduled.

What's planned next?

In September and October we will continue to build and fit out the new substation, and upgrade overhead wiring infrastructure at Wolli Creek Station and within the rail corridor. Additionally, the team will be installing new fencing along the rail corridor.



New asphalt and landscaping at the new substation

When will work take place?

Standard construction hours are **7am to 6pm Monday to Friday and 8am to 1pm on Saturdays**.

Some work will take place outside of these hours between:

- **2am to 2pm on Saturday 10 September**
- **6am to 6pm on Sunday 11 September**

This work will take place during a scheduled Sydney Trains trackwork period when no trains will be running. Scheduling construction work outside of standard construction hours enables our project team to complete the activities safely.

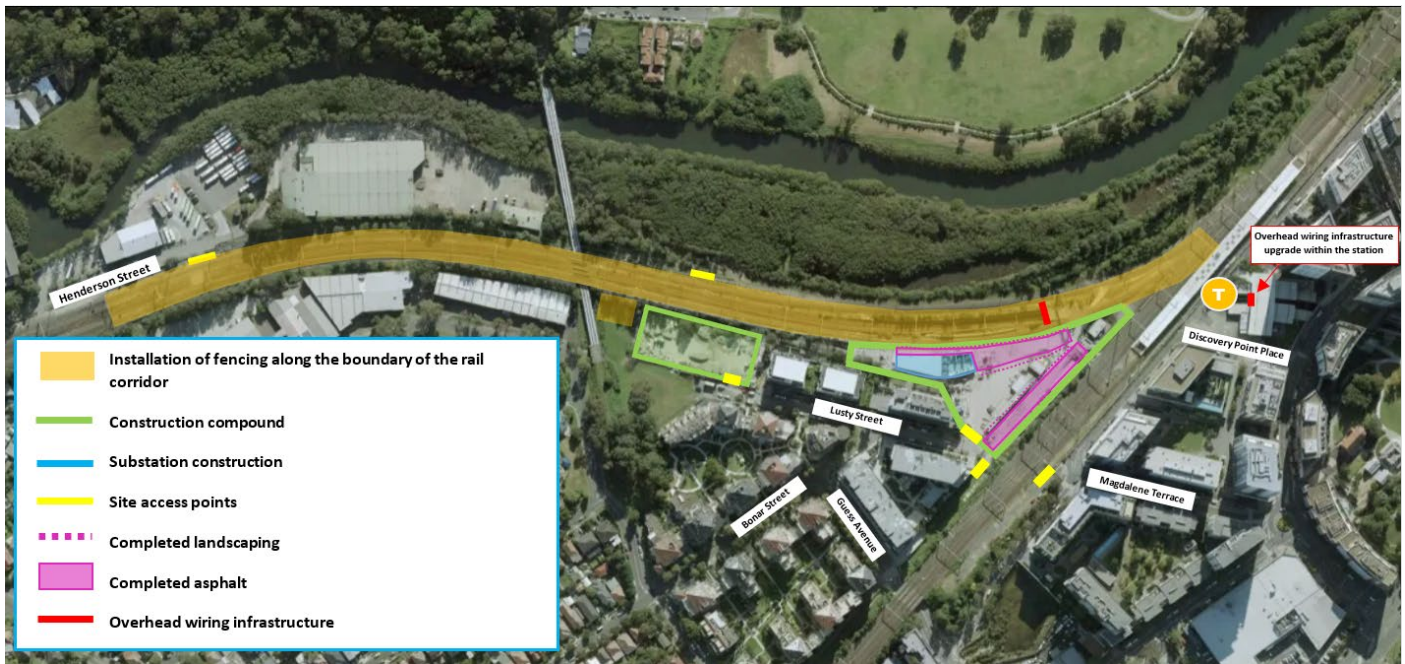
All construction work is weather permitting and subject to change.

Digital updates

We would like to keep you updated on our progress. To register for digital project updates, please email projects@transport.nsw.gov.au with 'Progress updates – MTMS Wolli Creek' as the subject line and include your name and address.



Work in progress: access road to the substation



Map of work locations

Where will work take place?

The above map shows the locations of work and site access points.

The project team will utilise the site compounds for deliveries, storage of materials and equipment, offices, and pre-start work meetings.

How do we consider the community?

The project team understands construction activities may cause disruption for the community. We will seek to minimise impacts as much as possible and adhere to strict environmental conditions relating to noise, vibration and dust management.

There's a lot happening

Currently there are multiple contractors working within the Wollie Creek rail corridor. For more information on work being completed by Sydney Trains, please phone **1300 656 999** or visit

www.transport.nsw.gov.au/sydtraincommunity

Contact us

If you have any questions or would like more on the More Trains, More Services project please contact our project team:

 1800 684 490

 projects@transport.nsw.gov.au

 www.transport.nsw.gov.au/mtms

 Level 5, 15 Bourke Road
Mascot NSW 2020



If you need help understanding this information, please contact the Translating and Interpreting Service on 131 450 and ask them to call us on 1800 684 490.

September and October 2022

Privacy Transport for NSW (TfNSW) is subject to the Privacy and Personal Information Protection Act 1998 ("PIIP Act") which requires that we comply with the Information Privacy Principles set out in the PIIP Act. All information in correspondence is collected for the sole purpose of assisting in the delivery of this project. The information received, including names and addresses of respondents, may be published in subsequent documents unless a clear indication is given in the correspondence that all or part of that information is not to be published. Otherwise, we will only disclose your personal information, without your consent, if authorised by the law. Your personal information will be held by us at 27 Argyle Street, Parramatta. You have the right to access and correct the information if you believe that it is incorrect.