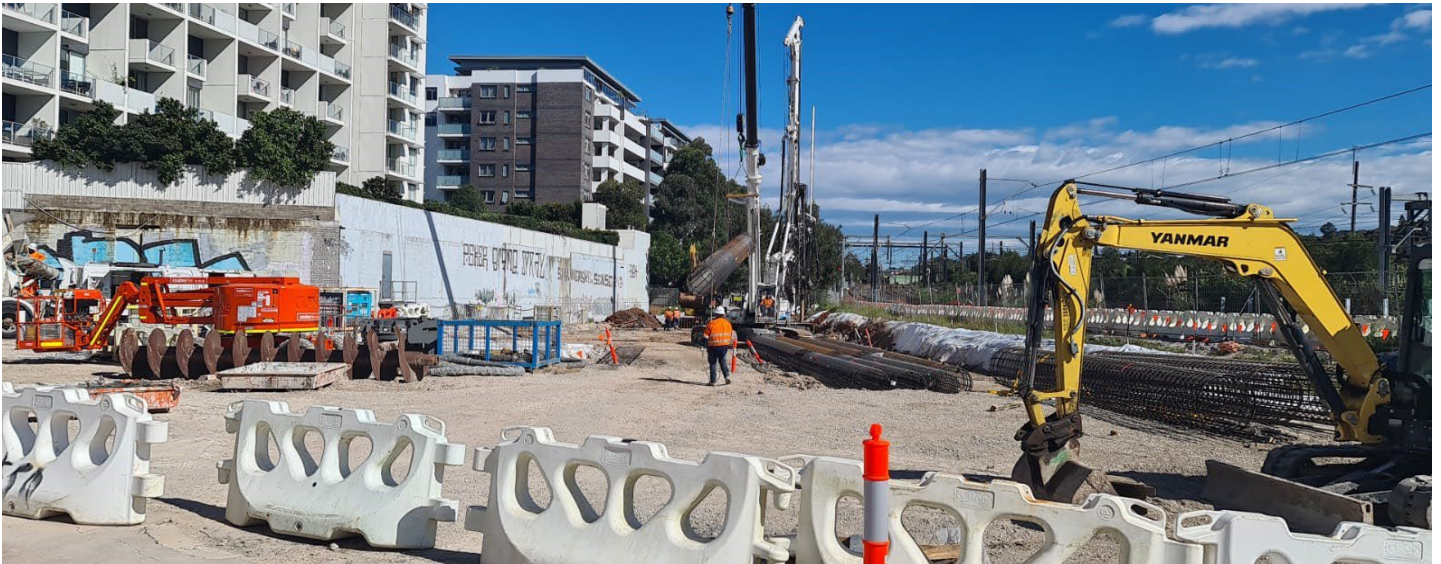


# More Trains, More Services

## Wolli Creek Power Supply Upgrade and Canopies projects



### What are we doing in Wolli Creek?

Transport for NSW is building a new substation within the rail corridor to create the necessary power supply to support the increase in the number of trains travelling along the T8 Airport Line in the future.

We are also extending the platform canopy at Wolli Creek Station to increase weather protection and encourage customers to use the full length of the platform, reducing crowding at busy times.

### What happened last month?

During August, we commenced vegetation removal, upgraded the station lighting, poured concrete for the substation, and trenched for utilities.

The project team also installed cables, fence posts, cable routes, and services for Spark Lane.

### What's planned next?

In September, our activities will include:

- tree and vegetation clearing
- installation of a watermain on Lusty Street
- concrete pour for the substation
- cable route construction
- service utility installations
- electrical and communications work for Wolli Creek canopy extension
- a deep clean of Station platforms.

### Are there activities planned outside standard construction hours?

Some construction is planned to take place outside of standard construction hours inside the rail corridor from **5am, Saturday 11 September to 8pm, Sunday 12 September**.

There may be some disruption to the platform and tunnel lighting, payphones, vending machines and electronic signage over this weekend as electrical and communications work for the canopy extension progresses.

When carrying out the concrete pour for the base of the substation, some deliveries may need to arrive outside standard construction hours. If this occurs outside of construction hours, we do not expect this work to be noisy.

This work is dependent on a number of factors including workforce availability due to the current Covid19 NSW Health guidelines, weather and site conditions and is subject to change.



### Where will work take place?

The above map shows the location of work inside the rail corridor with site access via Henderson and Lusty streets.

### How do we consider the community?

The project team understands construction activities may cause some disruption for the community and we will seek to minimise impacts as much as possible.

When carrying out our work, the project team utilises a noise assessment of the programmed activities to determine the noise to be generated and the appropriate mitigation measures to be put in place. We will also continue to ensure we adhere to strict environmental conditions relating to vibration and dust management.

Thank you for your understanding and patience while we complete this important work.

### How are we staying safe?

We continue to deliver projects across NSW while ensuring the safety of all staff and the community.

In line with current Australian Government guidelines around slowing the spread of Coronavirus the site will have a dedicated Covid Marshall to ensure all people entering the site have been tested for Covid-19 and are safe to enter the site (as per current NSW Health guidelines), masks will be worn at all times, and where possible all work will be carried out at with a 1.5m physical distance and all necessary hygiene practices will be observed.

### Contact us

For more information or to subscribe for project updates:

 project information line: 1800 684 490

 24/7 construction response line: 1800 775 465

 [projects@transport.nsw.gov.au](mailto:projects@transport.nsw.gov.au)

 [www.transport.nsw.gov.au/mtms](http://www.transport.nsw.gov.au/mtms)

### Translation



If you require the services of an interpreter, please contact the Translating and Interpreting Service on 131 450 and ask them to contact Transport for NSW on 1800 684 490.

An interpreter will assist you with translation.

### About More Trains, More Services

Over the next ten years the More Trains, More Services program will simplify and modernise the rail network so that customers can expect more frequent train services, with less wait times, less crowding and more seats on a simpler, more reliable network.

