

Sydney Trains

Westmead Bridge Road Upgrade April and May construction update

From Friday 26 April to Friday 31 May 2024

What we're doing

Sydney Trains is upgrading the road-over-rail bridge at Bridge Road, Westmead, to improve traffic flow in the Westmead precinct.

The project includes:

- an upgraded bridge with three traffic lanes, one northbound and two southbound lanes to ease morning peak hour traffic.
- a new shared path on the eastern side and an upgraded footpath on the western side of the bridge.

Throughout April and May works will be carried out on both sides of the bridge during standard construction hours.

Work will include:

- site access construction and mobilisation
- backfill and excavation
- piling.

Bridge work will also be carried out within the rail corridor during the following weekends:

- **from 5am Saturday 27 April to 10pm Sunday 28 April**
- **from 5am Saturday 18 May to 10pm Sunday 19 May.**

We understand this work may have an impact on you and we appreciate your patience and understanding.

How this affects you

Traffic and Parking

- **Wentworth Avenue between Reid Avenue and Bridge Road will be temporarily closed to traffic in both directions from 6am Friday 26 April to 6pm Monday 29 April.**
- Detours will be in place for both vehicle and pedestrian traffic.
- Pedestrian and vehicular access will always be maintained for residents allowing access to and from properties.
- A contraflow may be in place on Alexandra Avenue, between Bridge Road and Hawkesbury Road during weekdays. Traffic flow will be maintained in both directions.
- Traffic control will be on duty to assist motorists and pedestrians during the affected periods.
- There will be reduced parking on Alexandra Avenue near Bridge Road on the railway corridor side of the road.
- Buses replace trains for some rail lines during this period. Please plan ahead and visit <http://www.transportnsw.info> to find updated trackwork information.

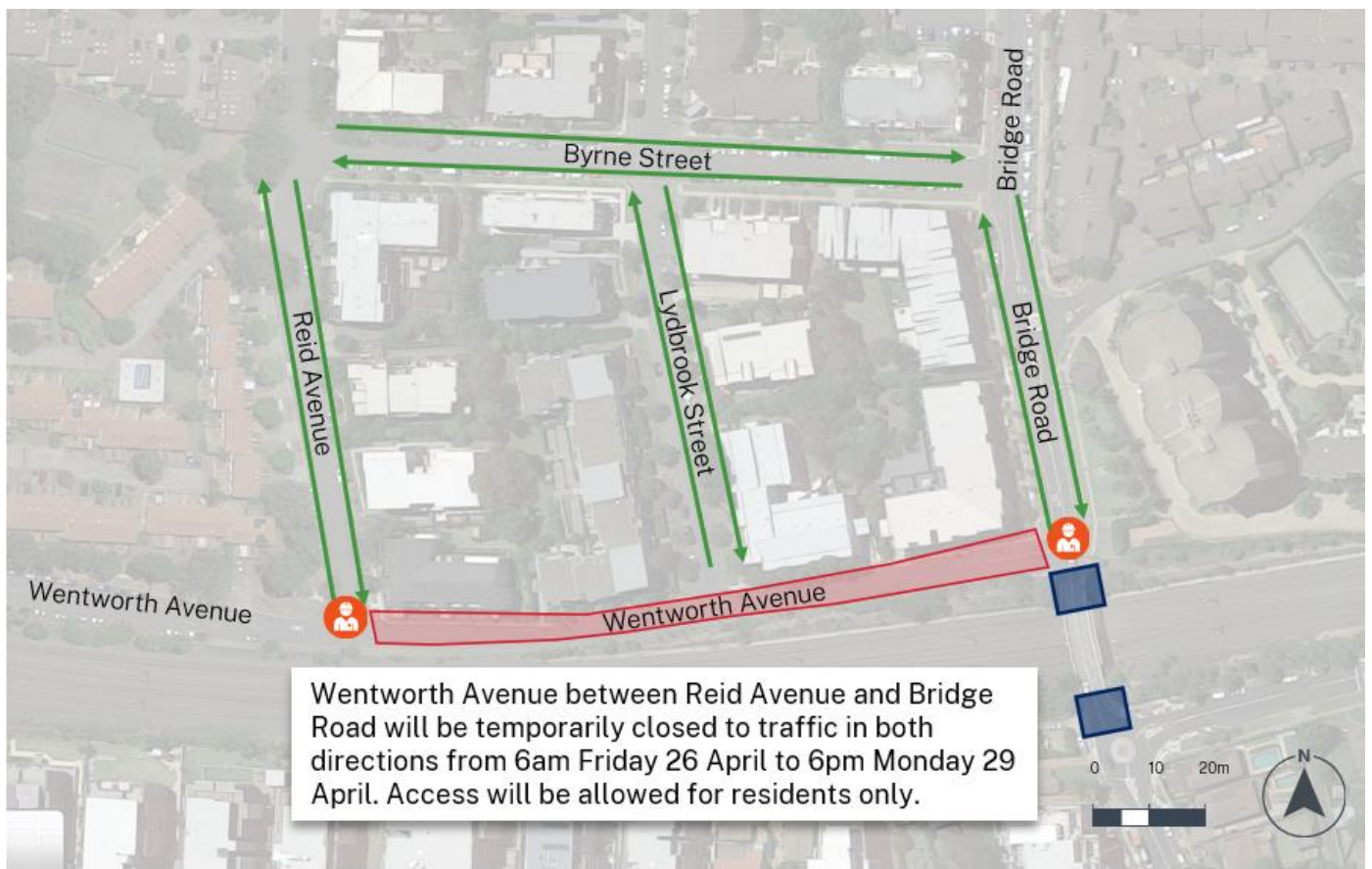
Sydney Trains

Noise

- These works may create additional noise throughout the day and at night.
- Standard construction hours are **from 7am to 6pm Monday to Friday and 8am to 1pm on Saturdays.**
- Additional works will be carried out on the following weekends during the day and night:
 - **from 5am Saturday 27 April to 10pm Sunday 28 April**
 - **from 5am Saturday 18 May to 10pm Sunday 19 May.**
- We will select low-noise compressors and equipment where low-noise alternatives are available.

We apologise for any inconvenience and thank you for your cooperation during these essential works.

Map of work area



KEY	Road lane closure	Traffic control
	Alternative route	Work area



A daytime contraflow will be in place on Alexandra Avenue from Monday to Friday. Parking will be restricted on the rail corridor side of road.

KEY  Contraflow arrangement  Location of plant

Contact us

If you have any feedback or questions about the project and to subscribe to updates, please contact us:

Project Infoline **1800 684 490**
To report environmental concerns (24 hours) **1300 656 999**

projects@transport.nsw.gov.au

www.transport.nsw.gov.au/westmead-bridge-road-upgrade



For the latest traffic updates:
Call 132 701, visit livetraffic.com or download the app Live Traffic NSW



Interpreter service

For languages other than English call 131 450
Arabic • Greek • Hindi • Mandarin • Vietnamese

لطلب خدمة الترجمة الشفهية للغات غير الإنجليزية اتصل بالرقم **131 450**

Για υπηρεσίες διερμηνείας σε άλλες γλώσσες εκτός από τα Αγγλικά καλέστε το **131 450**

अंग्रेज़ी के अतिरिक्त अन्य भाषाओं के लिए दुभाषिया सेवा **131 450** पर कॉल करें

获取英语以外的其他语言口译协助服务可以致电**131 450**

Để có dịch vụ thông ngôn cho các ngôn ngữ khác tiếng Anh, gọi số **131 450**

