

Peats Ferry Bridge Maintenance



October 2023



Transport for NSW acknowledges the Traditional Custodians of the lands on which we work and pays respect to Elders past and present.

Sydney Trains are carrying out maintenance on Peats Ferry Bridge on the Pacific Highway over the Hawkesbury River, on behalf of Transport for NSW.

What work are we doing?

As part of the bridge maintenance program, Sydney Trains will be undertaking the following work:

- Abrasive blasting and painting
- Steel and concrete repairs
- Devegetation
- Upgrade of traffic barriers
- Replacement of pedestrian barriers.

When and where we'll be working

We will be carrying out maintenance activities at Peats Ferry Bridge on the Pacific Highway. The Pacific Motorway (M1) is not affected by these works.

We will be working at Peats Ferry Bridge from **9 October 2023 to mid-2025**.

Work will take place from **7am to 6pm, Monday to Friday and 8m to 1pm on Saturdays**.

Intermittent night works may be required; however, we will notify you prior to these works taking place.

Equipment may be delivered to the worksite outside the above times. Some deliveries may occur at night due to daytime travel restrictions on large vehicles. Finishing works may take place following this period, including the removal of equipment.

What will this mean for you?

- There will be temporary traffic changes, including speed reductions, on the Pacific Highway at the Peats Ferry Bridge during these works. There will be a single lane closure with traffic alternating in both directions in the other lane (contra-flow) during work hours.
- Pedestrians and cyclists will still be able to use the bridge whilst this work takes place.
- During work hours, a 350-metre section of the bicycle lane on the bridge will be closed. A detour will be in place along the existing shared path, on the western side of the bridge. Please see map of detour on page 4. Traffic controllers will be on site to assist cyclists to safely cross the road to access the detour. Outside work hours, the bicycle lane will operate as normal.
- These works may create additional noise during the day and on weekends. Power tools, generators and compressed air machinery will be used throughout works. We will select low-noise equipment where alternatives are available.

Managing our impacts

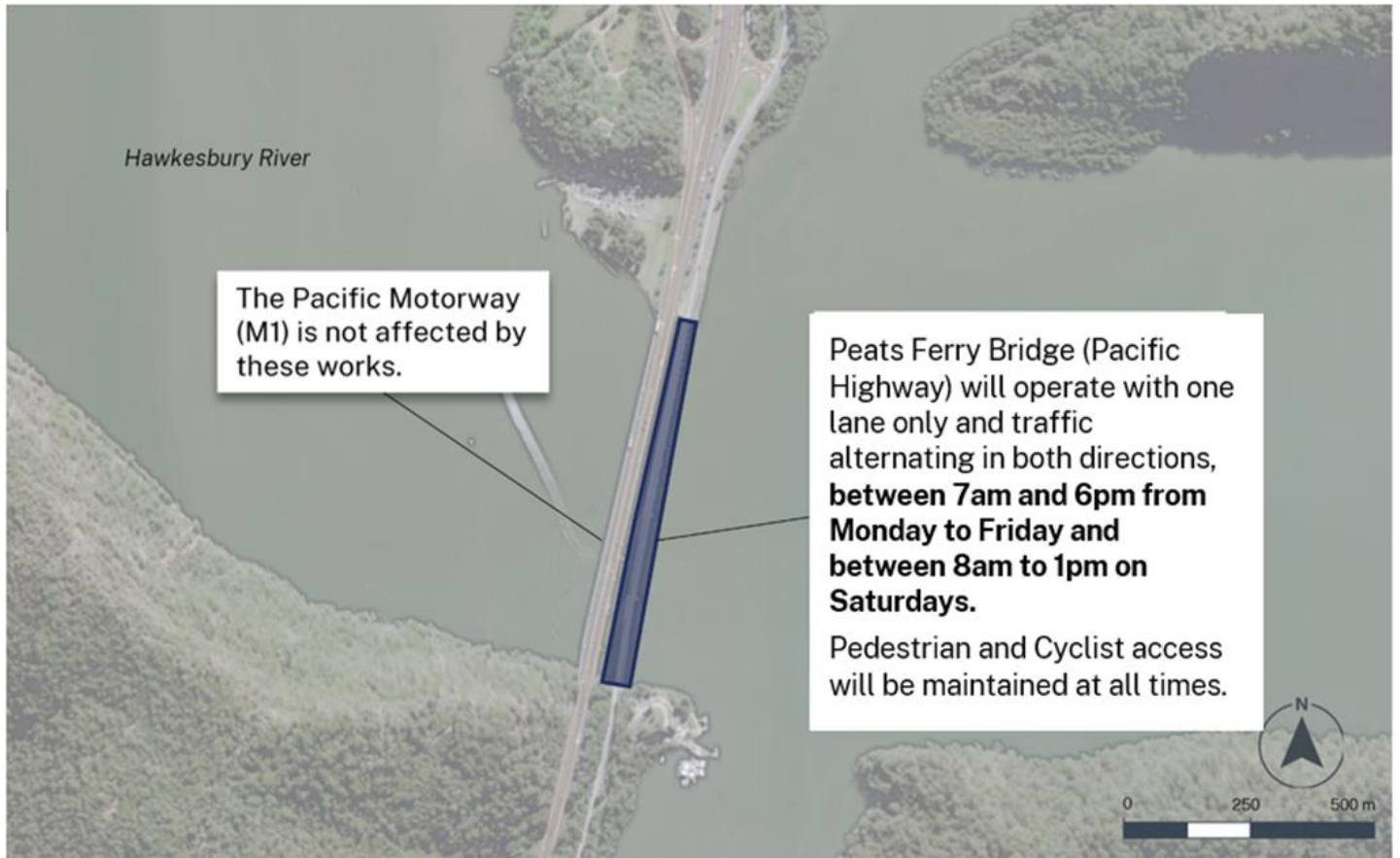
We aim to manage our work to avoid impacts to the community and the environment.

This includes:

- Fencing for safety and security
- Reducing our noise as much as possible.

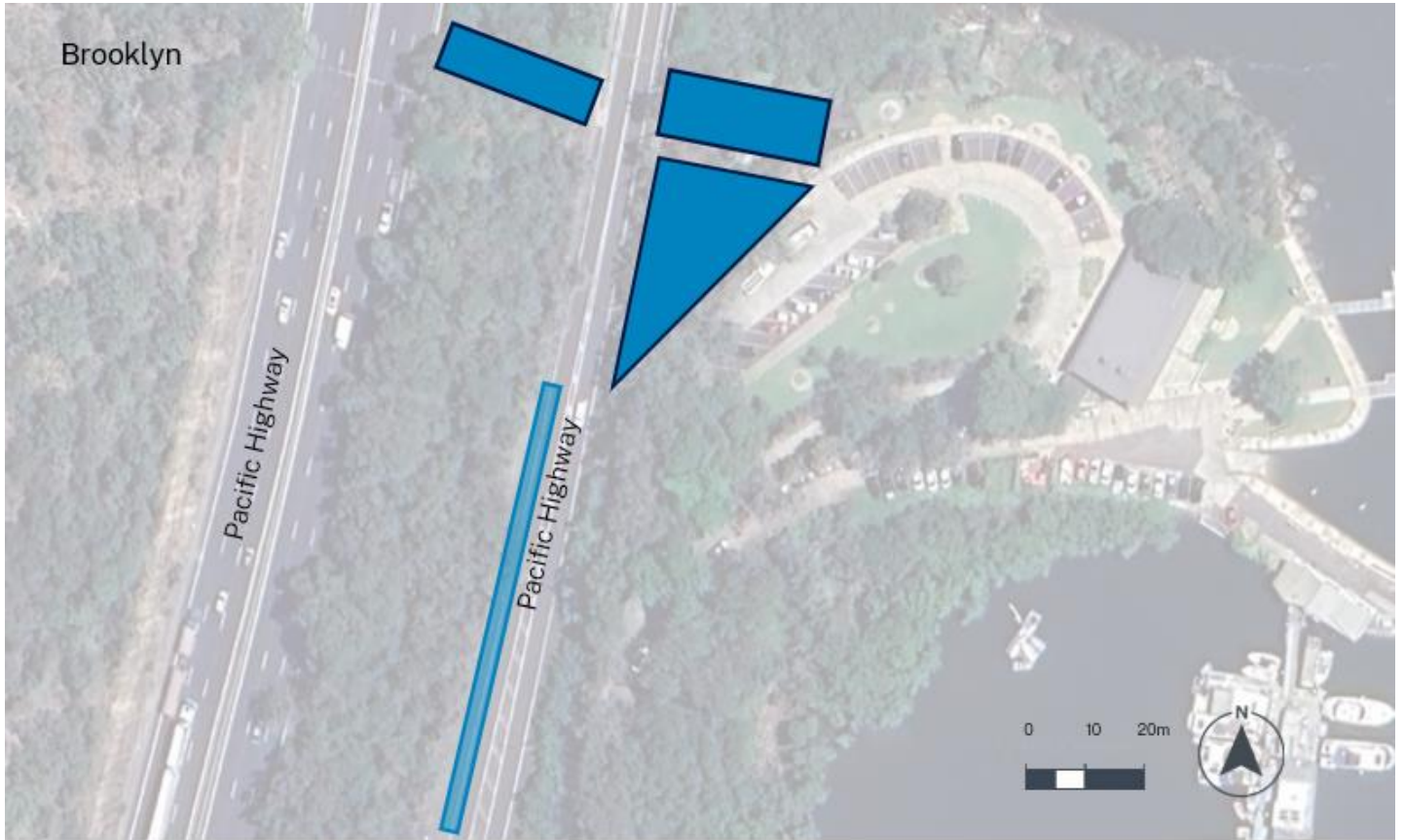




Location of work area

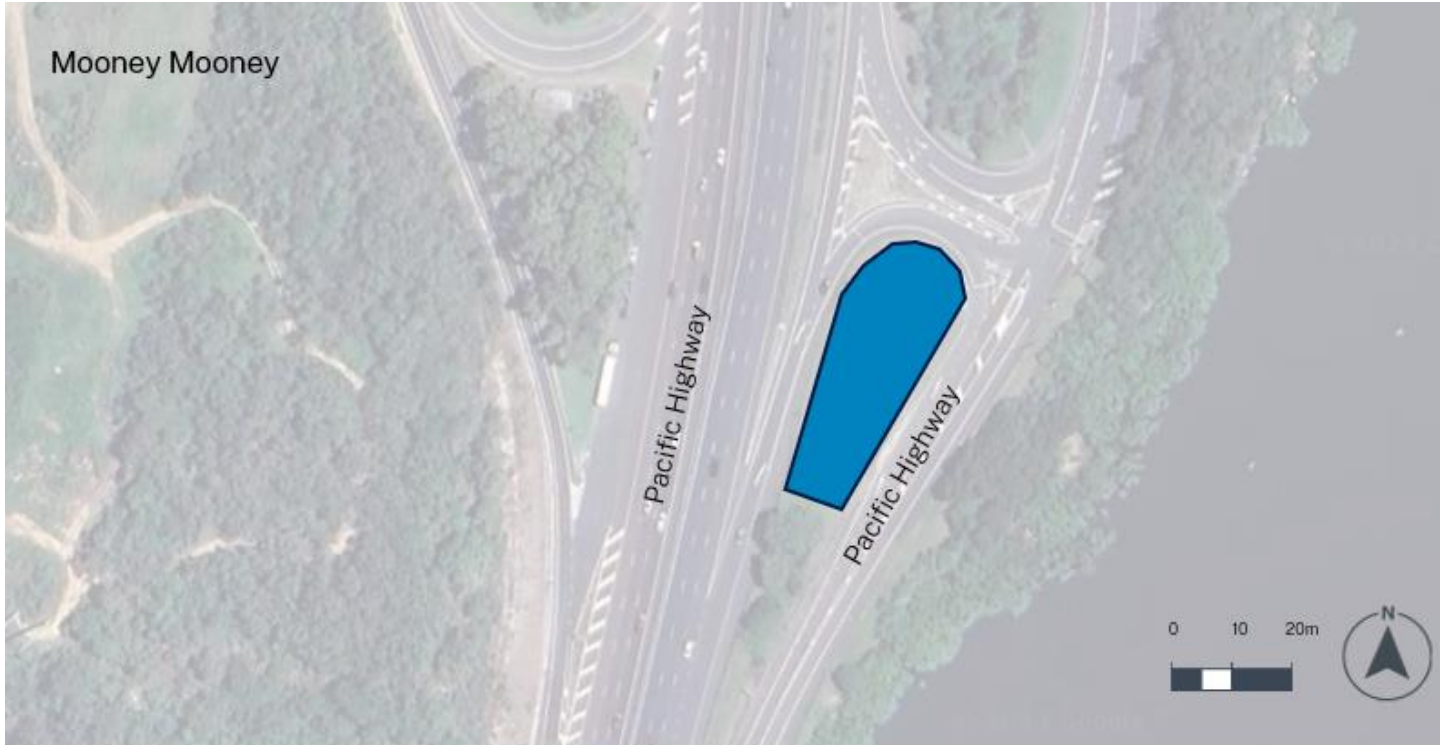



KEY  Work area

Location of site sheds, amenities and reserved parking

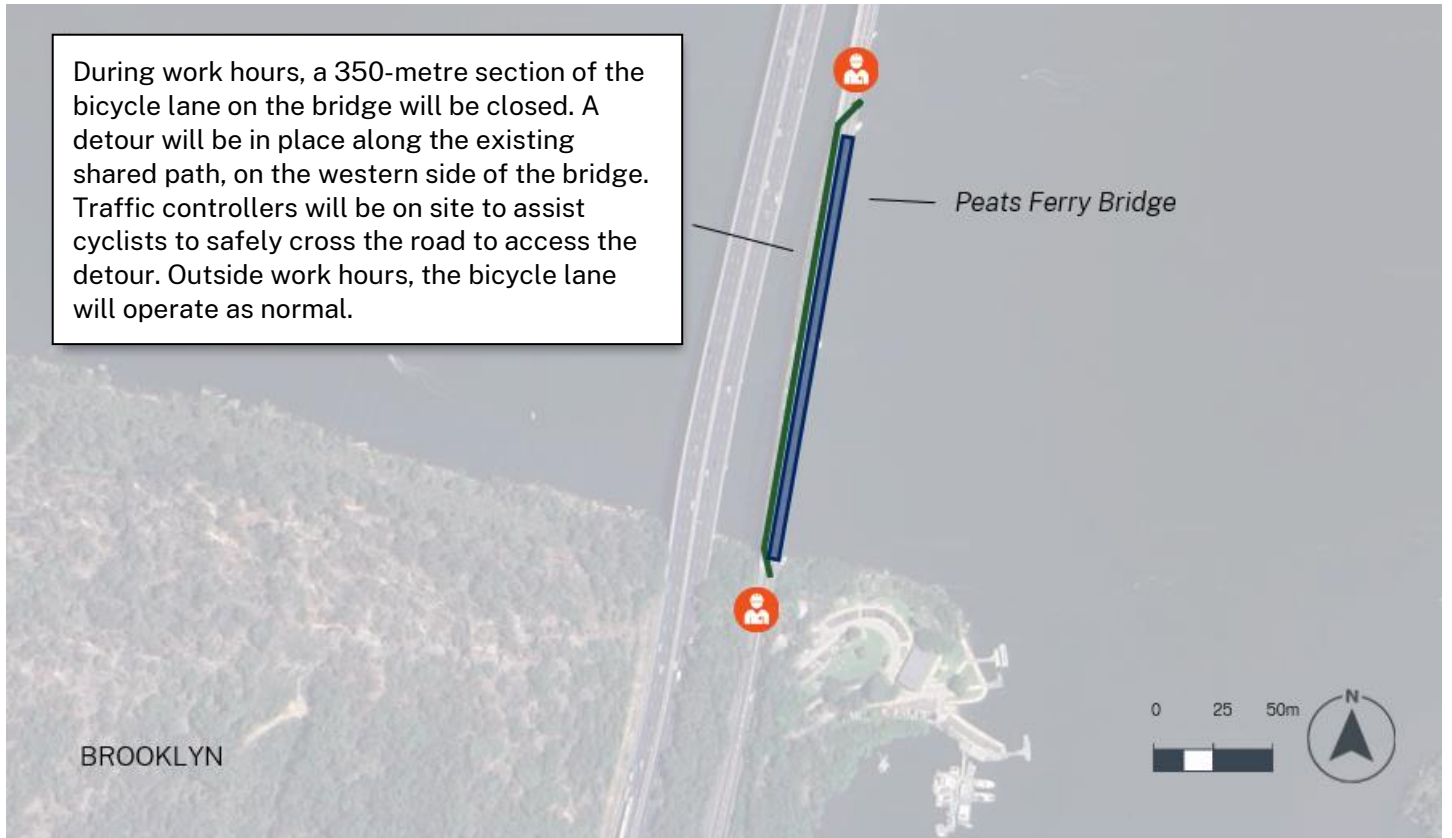


KEY  Site shed/ Amenities  Reserved parking



KEY  Site shed/ Amenities

Cyclist path closure and detour during work hours



During work hours, a 350-metre section of the bicycle lane on the bridge will be closed. A detour will be in place along the existing shared path, on the western side of the bridge. Traffic controllers will be on site to assist cyclists to safely cross the road to access the detour. Outside work hours, the bicycle lane will operate as normal.

KEY



Work area



Traffic control



Cycle lane detour during work hours (shared pedestrian path)

Contact us



Project Infoline **1800 684 490**
To report environmental concerns
(24hours) **1300 656 999**



projects@transport.nsw.gov.au



**www.transport.nsw.gov.au/
sydtrainscommunity**



For the latest traffic updates:
Call 132 701, visit livetraffic.com or
download the app Live Traffic NSW



Interpreter service

For languages other than English call 131 450
Arabic • Greek • Hindi • Mandarin • Vietnamese

لطلب خدمة الترجمة الشفهية للغات غير الإنجليزية اتصل
بالرقم **131 450**

Για υπηρεσίες διερμηνείας σε άλλες γλώσσες εκτός από
τα Αγγλικά καλέστε το **131 450**

अंग्रेज़ी के अतिरिक्त अन्य भाषाओं के लिए दुभाषिया सेवा
131 450 पर कॉल करें

获取英语以外的其他语言口译协助服务可以致电**131 450**

Để có dịch vụ thông ngôn cho các ngôn ngữ khác tiếng
Anh, gọi số **131 450**

www.transport.nsw.gov.au/privacy-statement#Your_Privacy