

Sydney Trains

Donald Street Overbridge, Broadmeadow improvement work

From Monday 3 June to Monday 10 June 2024

What we're doing

To improve service reliability, Sydney Trains will complete maintenance works at Donald Street Overbridge, Broadmeadow from Monday 3 June to Monday 10 June.

Work activities include:

- Vegetation removal work
- Scaffolding and bridge refurbishment work
- Bridge steel blasting and painting

Sydney Trains is undertaking maintenance work at Donald Steet Overbridge, Broadmeadow from Monday 3 June to Monday 10 June to protect the overbridge steelwork from corrosion and extend the life of the structure. We will be repainting a section of the overbridge which involves abrasive cleaning and painting work. Note that abrasive cleaning using high pressure air is noisy and will need to occur at night. Ideally, Sydney Trains would prefer to complete the cleaning and painting during daytime hours to minimise the inconvenience to you. However, as we only have a weekend window when trains do not run to complete the works, Sydney Trains will require to scaffold and contain the area on Saturday day, abrasive clean the existing paint off at night, and complete a 2-coat industrial paint system on Sunday in warmer, drier air. This will prevent any further corrosion on the steelwork. The cleaning is planned to take 38 hours between 4pm Saturday 8 June to 6am Monday 10 June. However, we will try our best to accelerate the program to minimise the noise work at night.

This work also involves the removal of some vegetation. Please note all the required environmental approvals have been obtained and relevant environmental guidelines will be followed.

We understand this work may have an impact on you and appreciate your patience and understanding.

How this affects you

Noise

- These works will create additional noise during the weekend and at night.
- Work will take place from
 - 7am to 5pm Monday 3 June to Friday 7 June
 - 6am Saturday 8 June to 10pm Monday 10 June
- **Work activities will include abrasive cleaning, vacuum cleaning, and compressors.** We will select low-noise compressors and equipment, where low-noise alternatives are available.



Visit transportnsw.info

Sydney Trains

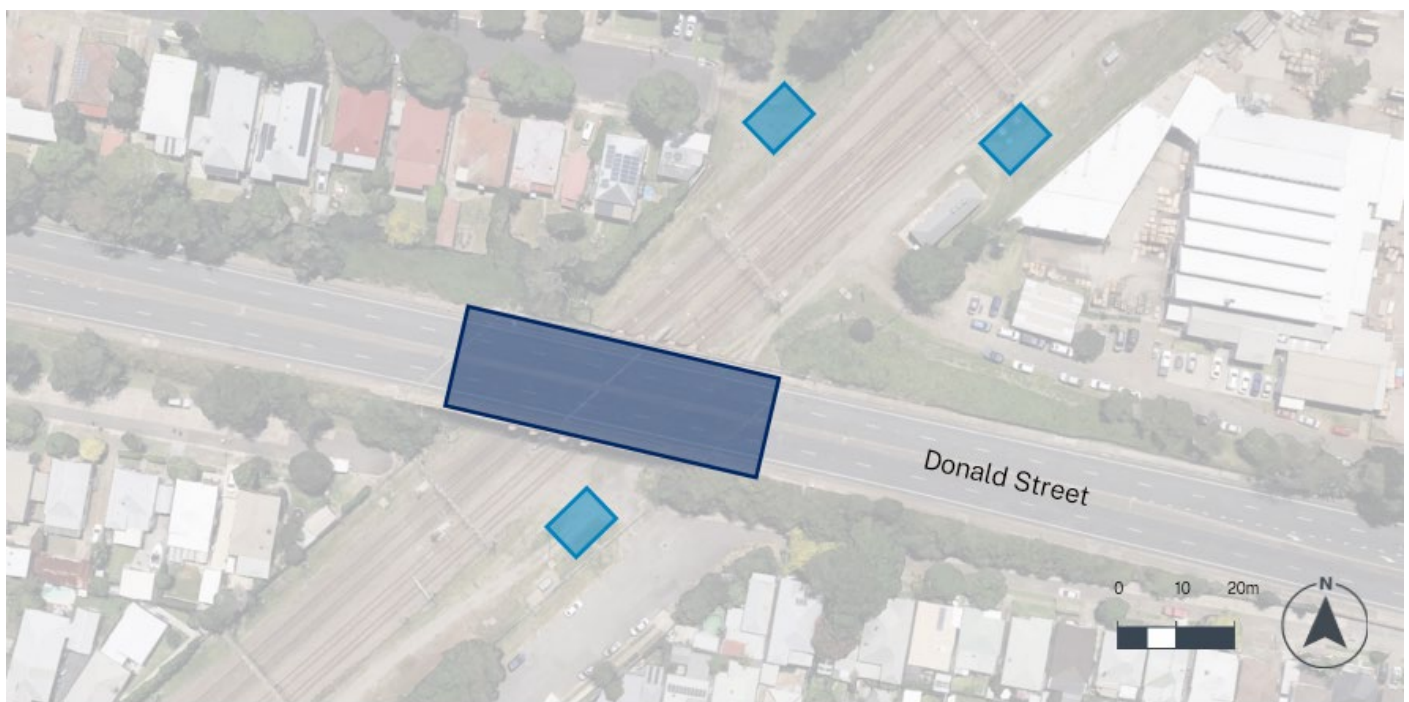
- Equipment may be delivered to the worksite outside the above periods, some deliveries may occur at night due to travel restrictions on large vehicles.
- Finishing works and the removal of material may also take place during this period.

Traffic and Parking

- We will park our vehicles inside the rail corridor where possible, however please be aware that on-street parking may be limited near worksites.
- Traffic controllers will be on duty to assist motorists and pedestrians throughout the duration of the works.

We apologise for any inconvenience and thank you for your cooperation during these essential works.

Location of work



KEY



Work area



Site compound

Contact us

For upcoming work

www.transport.nsw.gov.au/sydneytraincommunity

To report environmental concerns (24 hours) **1300 656 999**



Visit transportnsw.info