

# Sydney Trains

## Hawkesbury River Bridge maintenance works

From Monday 3 June to Thursday 13 June 2024

### What we're doing

To improve service reliability, Sydney Trains will be undertaking maintenance works at Hawkesbury River Bridge from Monday 3 June to Thursday 13 June.

We understand this work may have an impact on you and we appreciate your patience and understanding.

### How this affects you

#### Noise

- These works may create additional noise at night and over the weekend.
- **Work will take place from;**
  - **7am to 5pm Monday 3 June to Friday 7 June**
  - **6am Saturday 8 June to 10pm Monday 10 June**
  - **7am to 5pm Tuesday 11 June to Thursday 13 June**
- Equipment may be delivered to the worksite outside the above times. Some deliveries may occur at night due to daytime travel restrictions on large vehicles.
- Finishing works may take place following this period, including the removal of equipment.

#### Traffic

- Heavy vehicles will use local streets to access the rail corridor.
- **The wharf access road off Dangar Road and Hawkesbury River Station will be temporarily blocked off for work vehicle access.**
- While we will park our vehicles inside the rail corridor where possible, please be aware that parking will be limited near worksite.
- Traffic controllers will be on duty throughout the works to assist wharf pedestrians access the wharf safety.

**We apologise for any inconvenience and thank you for your cooperation during these essential works.**

### Contact us

For upcoming work

[www.transport.nsw.gov.au/sydtraincommunity](http://www.transport.nsw.gov.au/sydtraincommunity)

To report environmental concerns (24 hours) **1300 656 999**



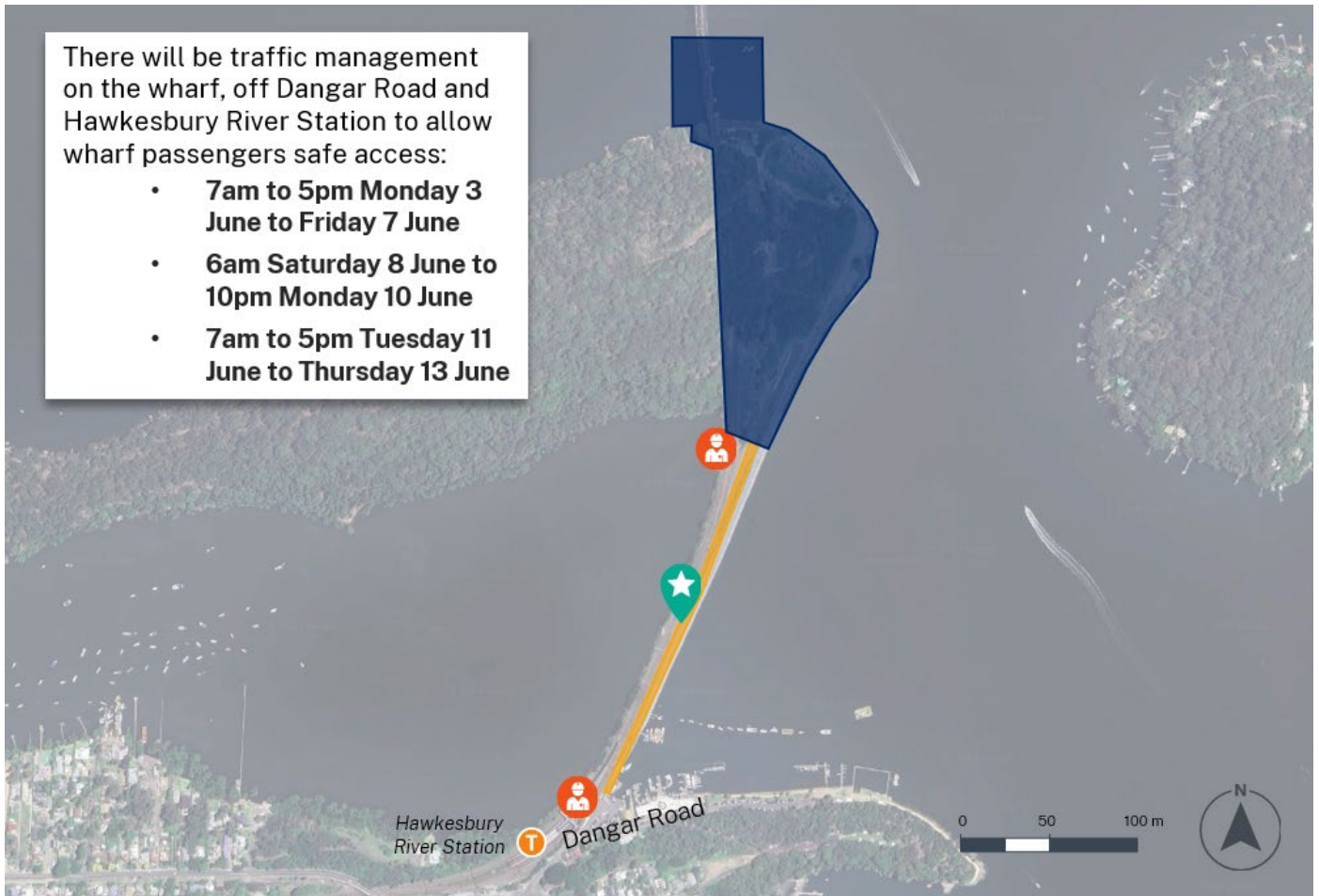
Visit [transportnsw.info](http://transportnsw.info)

# Sydney Trains

## Location of work

There will be traffic management on the wharf, off Dangar Road and Hawkesbury River Station to allow wharf passengers safe access:

- **7am to 5pm Monday 3 June to Friday 7 June**
- **6am Saturday 8 June to 10pm Monday 10 June**
- **7am to 5pm Tuesday 11 June to Thursday 13 June**



KEY		Work area		Site access		Traffic control
		Temporary road closure				