

# SX52 Safely Access the Rail Corridor

# Module Outline

TLIF0020 Safely access the rail corridor

[transport.nsw.gov.au](http://transport.nsw.gov.au)



# About SX52 Safely Access the Rail Corridor

## Entry Requirements

- You must be able to understand, read and speak basic English to enrol in this course.

## Duration

- The course is completed over one (1) day.

## Delivery locations

The course is delivered at the following location/s:

- Internal Participants will attend training at the Transport Training Centre and other TfNSW RTO approved satellite locations.
- External Participants will attend the facilities of one of the Approved Training Providers (ATPs).

## Modes of delivery

Module will be delivered via

- 1 Day Face-to-face learning and assessment at the TfNSW training facility.

## Assessment requirements

As part of this module, you are required to successfully complete the following assessment requirements:

- Written questions
- Practical Observation tasks

If you are deemed Not Yet Satisfactory on your first attempt of an assessment, you will have one opportunity to resubmit your assessment task with improvements made based on assessor feedback.

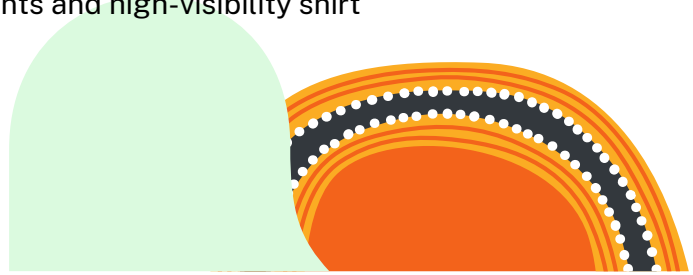
Further assessment attempts are provided at the discretion of the Learning Delivery Manager (or delegate) following a review of your training and/or progress to date. If your result still remains NYC, you will be provided with targeted coaching/training.

You have the right to appeal an NYC result.

## Materials and/or equipment required

Learners must bring the following materials and equipment:

- Sydney Trains approved high-visibility pants and high-visibility shirt
- Be wearing safety boots
- Hard hat



- Gloves
- Safety glasses

Learners will be provided with the following materials and equipment:

- Learner Workbooks for their own personal reference and note taking
- Assessment Tools
- iPad to access Sydney Trains Network Rules and Procedures as well as the required Track Manuals.
- Access to track hand tools, power tools, minor plant and measuring equipment for use in learning and assessment activities.

### Recognition of Prior Learning (RPL) / Credit Transfer (CT)

As the rail industry is a safety critical environment, it is at TfNSW discretion to accept or decline applications for Recognition where competencies of a safety critical nature are identified.

In this instance, Participants who can provide a Statement of Attainment for TLIF2080 Safely access the rail corridor from interstate will be required to:

- Complete the full Face to Face or Distance Delivery assessment – as TfNSW require a Sydney Trains recognised provider to deliver the unit.

### Learning outcomes

The module aims to equip Rail Workers with the required knowledge and skills to be able to:

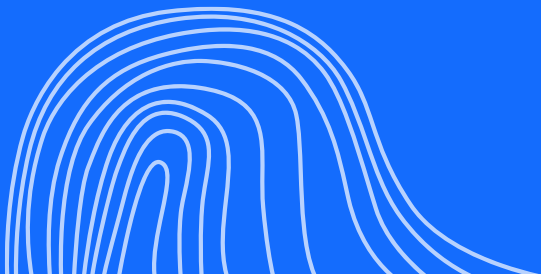
- applying relevant workplace rules and procedures and communicating effectively with individuals and/or groups, following workplace policies, procedures and protocols
- identifying the danger zone and safe places and job hazards and taking required action to minimise, control or eliminate identified hazards
- using personal protective equipment (PPE) that conforms to Rail Infrastructure Manager requirements.

### Nationally recognised Units of Competency

At the successful completion this module, you will be issued with a nationally recognised Qualification which will include the following units of competency:

- TLIF0020 Safely access the rail corridor





**© Transport for New South Wales**

Transport for NSW has copyright in this publication. Other than for the purposes of and subject to the conditions prescribed under the Copyright Act, no part of it may in any form or by any means be reproduced, stored in a retrieval system or transmitted without prior written permission of Transport for NSW.