



## The new Barangaroo Wharf is now open.

The new wharf opened on Monday 26 June, increasing Sydney's ferry capacity and servicing the thousands of residents, visitors and workers travelling to the Barangaroo commercial and residential district. Thank you to everyone for your patience during the construction period.

The accessible Barangaroo Wharf will help to unlock capacity constraints on Sydney's ferry network with commuters able to easily connect with the CBD via the Wynyard Walk.

Customers will also benefit from more than 30 additional weekly services on the F3 Parramatta River route, and customers from the Eastern Suburbs will be able to catch direct services to Barangaroo when the new cross Harbour ferry route is introduced later this year.

Over the coming weeks, minor finishing works will be completed. Nearby residents and businesses will be notified prior to any work occurring outside normal hours.

### Ferry services

All public ferry services that previously arrived and departed from Darling Harbour Wharf 3 have moved to the new Barangaroo Wharf 1, including the F3 Parramatta River and F4 Darling Harbour services.

Barangaroo Wharf 2 is being used for overnight berthing of ferries and will open for ferry services when the new cross Harbour ferry route is introduced later this year.

The new wharves feature two 48m x 23m pontoons that can accommodate up to four ferries each for overnight berthing. The wharf is expected to service up to 11 vessels during the commuter peak hour and up to 14 vessels in the weekend period.

### Operating hours

- 5am to midnight – Monday to Friday
- 7am to midnight – Saturday and Sunday

Special events such as New Year's Eve may require extended operating hours.

The wharf will also be used to berth ferries overnight.

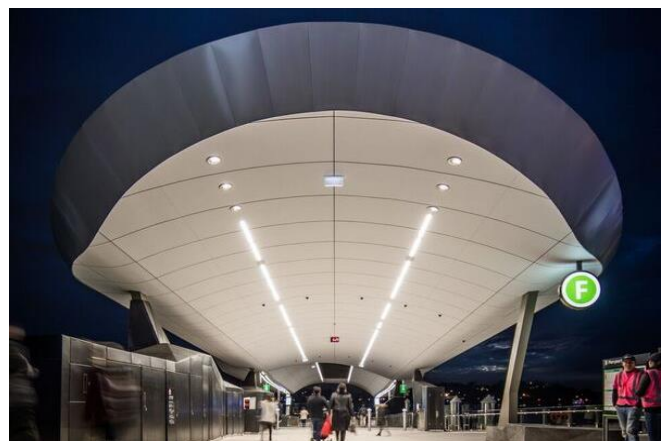
For more information about ferry services, Opal cards, accessibility, and timetabling visit: [www.transportnsw.info](http://www.transportnsw.info)

### Noise

For operational safety reasons, ferries are required to use their horn up to three times when arriving or departing the wharf to notify other vessels in the area.

There will be some level of activity at other times such as cleaning and minor maintenance activities. Noisier activities such as high pressure cleaning will be limited to daytime hours.

Operational compliance monitoring will be completed over the coming months by Roads and Maritime Services to confirm the noise goals are within the levels identified in the Environmental Impact Statement.

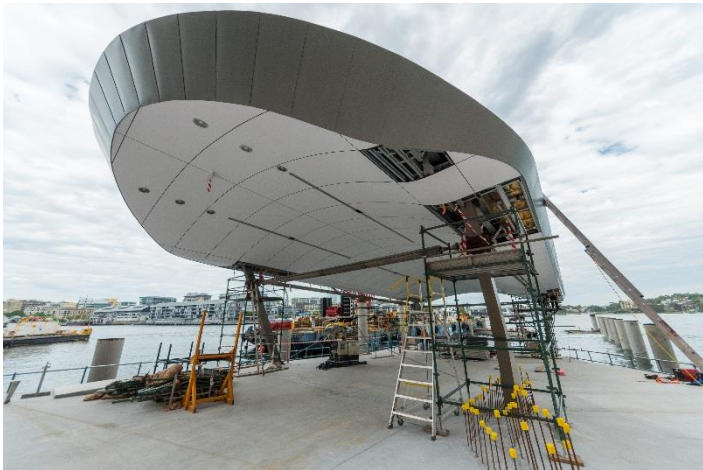




## Lighting

Barangaroo Wharf will be appropriately lit to ensure the safety of staff and customers. Lighting that is not required after hours will be switched off or dimmed.

Lighting has been designed and installed to ensure glare and light spill are minimised.



## Barangaroo Wharf construction facts

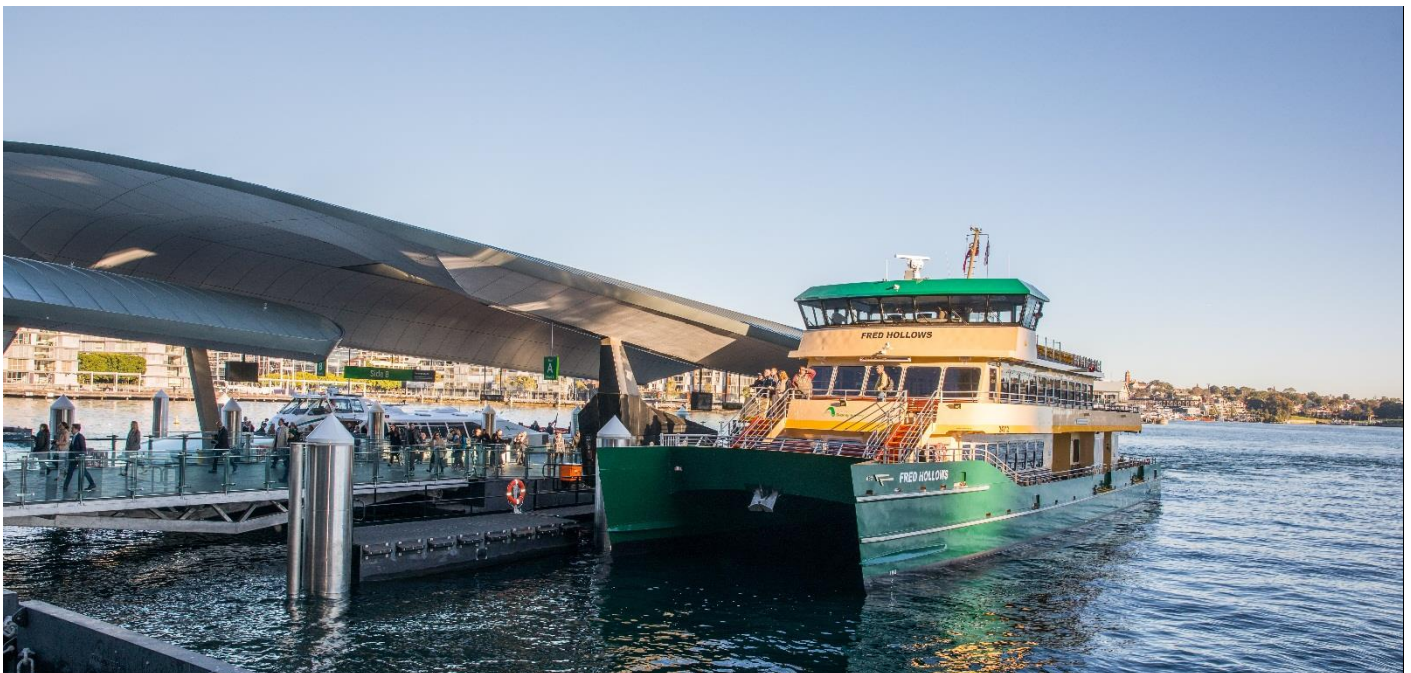
- A total of 76 permanent piles in four different sizes (largest being 1.2m in diameter) were constructed for the Barangaroo Wharf
- The roof structures on the Barangaroo Wharf are

modelled on the Wynyard Walk entrances, providing design consistency throughout the Wynyard and Barangaroo precincts

- The ceilings are architecturally domed with skylights to take advantage of the natural light
- Concrete wharves were constructed using a combination of precast beams and cast in situ topping slabs. In excess of 2000m<sup>3</sup> (5000 tonnes) of concrete was used in the constructions
- There are over 40 CCTV cameras across the two wharves, all with face recognition capability
- Two marine navigation beacons on the wharves are solar powered
- To reduce power usage, functional contemporary lighting using LED low voltage technology was installed on a dimmable automated system

## Contact information

For more information on CBD changes, visit [mysydneycbd.nsw.gov.au](http://mysydneycbd.nsw.gov.au). For further details on Barangaroo Wharf and to view time-lapse footage of the Barangaroo Wharf construction, visit [transport.nsw.gov.au/projects](http://transport.nsw.gov.au/projects)



This document contains important information about public transport projects in your area. If you require the services of an interpreter, please contact the Translating and Interpreting Service on 131 450 and ask them to call Transport for NSW on (02) 9200 0200. The interpreter will then assist you with translation.

Delivered by:  
**MCCONNELL  
DOWELL**  
CREATIVE CONSTRUCTION™