

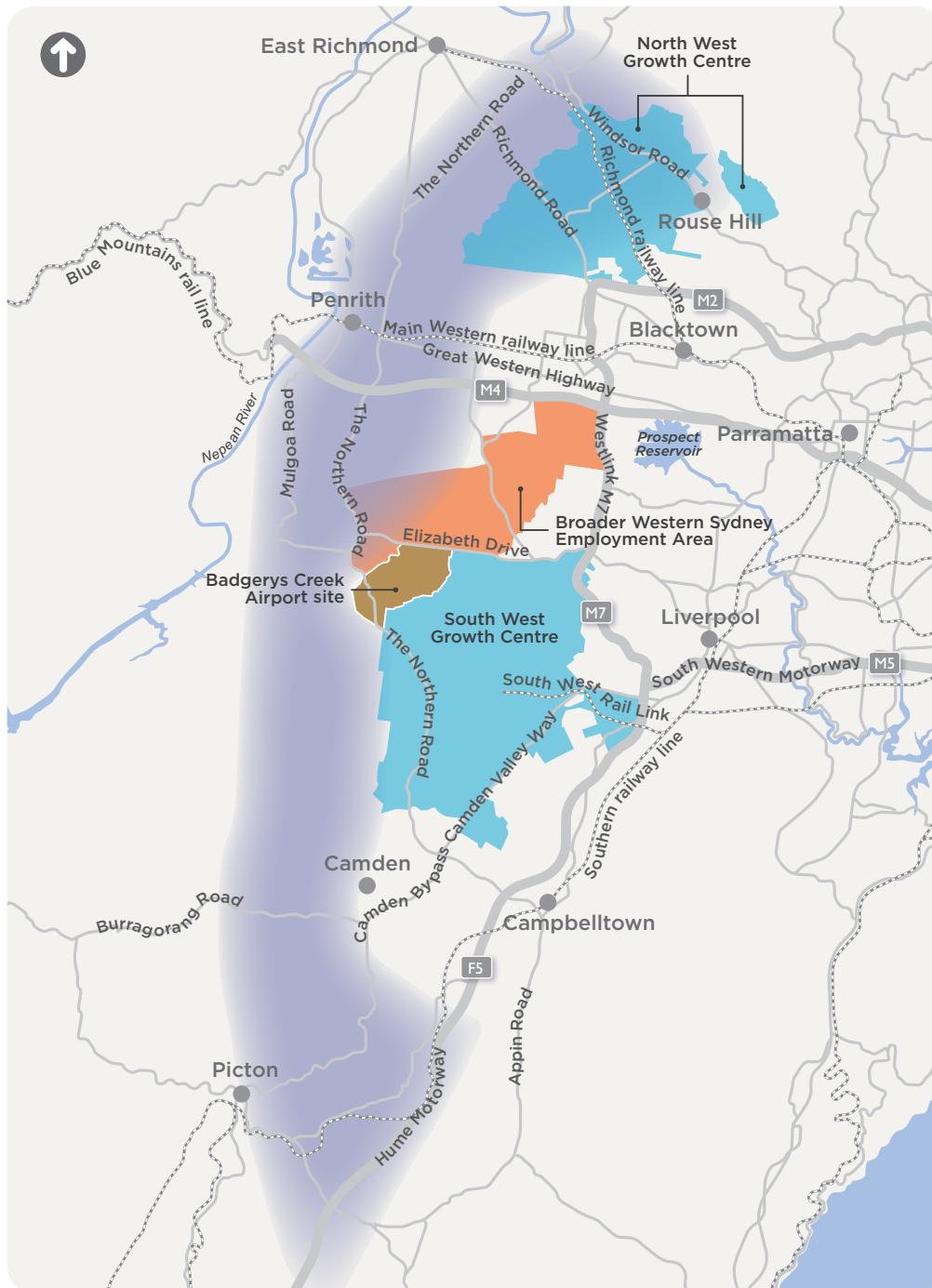
Outer Sydney Orbital

CORRIDOR PRESERVATION

NEWSLETTER • JUNE 2015

Transport for NSW is investigating a suitable corridor for the Outer Sydney Orbital to provide a north - south connection for a future motorway, freight rail with supporting Intermodal Terminal and where practical a passenger rail line.

The study area for investigation



What is corridor preservation?

Corridor preservation is a process to identify and preserve an area of land for future transport use. A preserved corridor provides certainty for communities, businesses and land owners and reduces the cost of providing infrastructure in the long term.

LEGEND

- Motorways
- Primary roads
- Railway
- Growth Centres
- Employment area
- Badgerys Creek Airport site
- Outer Sydney Orbital study area

0 5 10 15
Kilometres

Have your say

As part of the initial planning process, we are inviting you to provide information that will help us understand the challenges and opportunities within the study area for the Outer Sydney Orbital.

We are committed to consulting with stakeholders and the wider community, and encourage you to provide valuable local knowledge of the study area and other information to help us identify a suitable transport corridor location.

Visit our Information stalls and Community drop-in sessions

Information about the corridor identification process for the Outer Sydney Orbital will be available at information stalls and community drop-in sessions which will be held at various locations in June and July 2015.

Information stalls

- St Marys Shopping Village – Thursday 11 June, 3pm to 7pm
- Mt Druitt Town Square, Dawson Mall – Saturday 13 June, 10am to 2pm
- Nepean Village Shopping Centre Sunday 14 June, 11am to 3pm
- Windsor Riverview Shopping Centre – Thursday 18 June, 3pm to 7pm
- Norwest Marketown, Bella Vista – Thursday 25 June, 3pm to 7pm
- Rouse Hill Town Centre – Saturday 27 June, 10am to 2pm

- Luddenham Uniting Church Markets – Saturday 4 July, 9am to 1pm
- Narellan Town Centre – Sunday 5 July, 11am to 3pm
- Jordan Springs Shopping Centre Thursday 9 July, 3pm to 7pm
- Londonderry Post Office – Saturday 11 July, 10am to 2pm

Community drop-in sessions

Drop in any time and meet the project team.

- St Marys Community Centre Hall 29 Swanston Street, St Marys Wednesday 17 June, 4pm to 8pm
- The Ponds School Hall – 201 The Ponds Boulevard Tuesday 14 July, 4pm to 8pm
- Camden Civic Centre – The Ferguson Gallery Wednesday 15 July, 4pm to 8pm

Visit the project webpage at transport.nsw.gov.au/projects-oso-corridor for further details of locations and dates.

Further opportunities will be available to comment as the corridor study progresses.

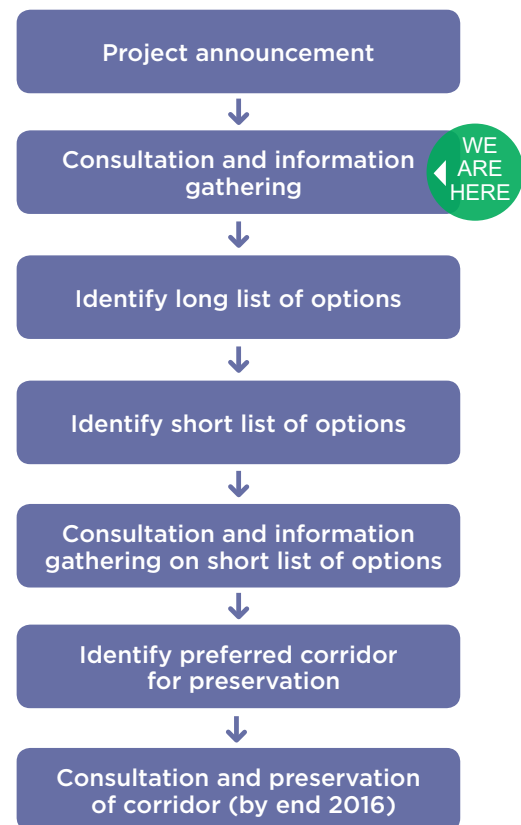
Rail corridor investigations

Corridor investigations for the Outer Sydney Orbital will also identify a suitable corridor for the South West Rail Link Extension between Bringelly and the T1 Western Line. Opportunities to accommodate road, freight and/or passenger rail modes in the same corridor, if practical, will be considered as part of this work.

New freight infrastructure is vital to service the population and employment growth of Western Sydney. The corridor investigation will address the potential for freight rail, together with a supporting intermodal terminal in the Broader Western Sydney Employment Area.

Information on the South West Rail Link Extension project is available at transport.nsw.gov.au/projects-swrl-extension-corridor-preservation.

Study timetable



Have your say

Share your local knowledge of the study area by **Monday 20 July 2015**.

Submit your feedback using the interactive online map at transport.nsw.gov.au/projects-oso-corridor

For project information and enquiries

email: OSO@transport.nsw.gov.au

visit: transport.nsw.gov.au/projects-oso-corridor

call: **1800 837 511**

