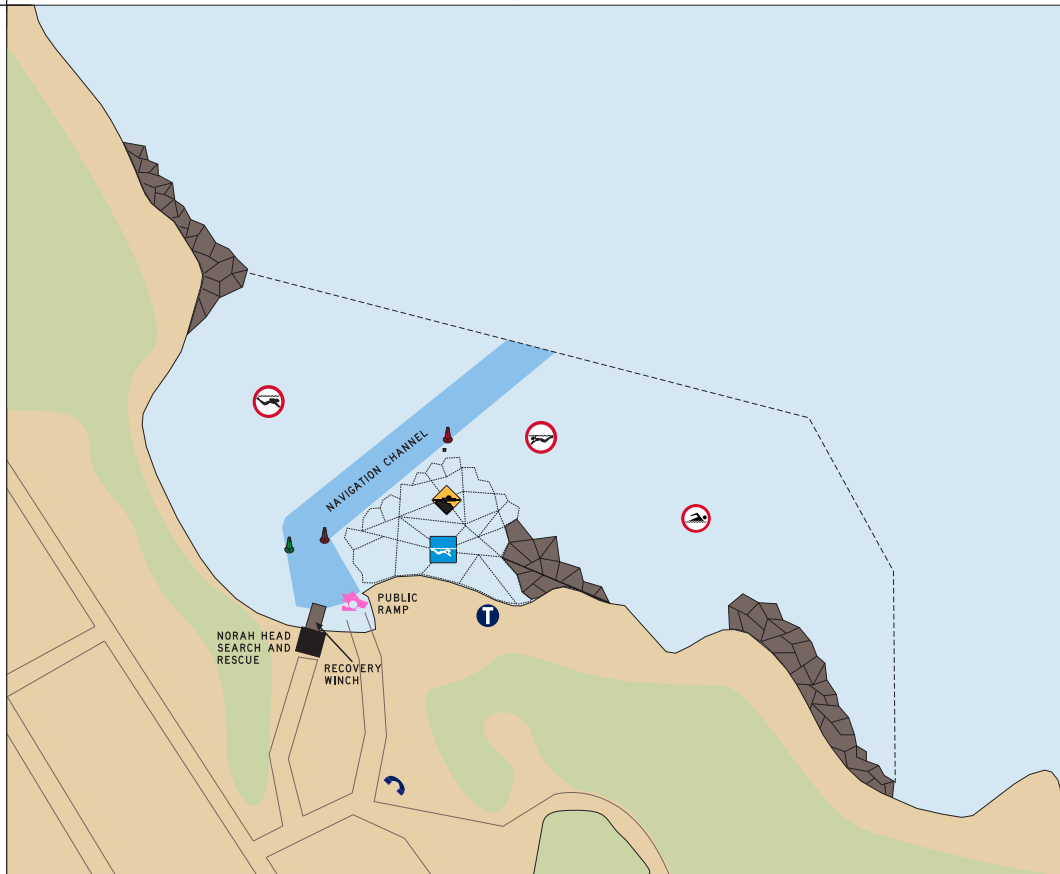


Colours:
As per AS/NZS 1906.1:2007
Background - Reflective Class 1X
Diamond Grade White
Legend - Red, Blue, Yellow & Black
Wyong Council Logo
AS/NZS 1906.1/2007 Blue, White &
Pantone 7459C

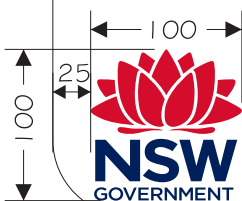
Map Colours:
Water Pantone 642C, Land Pantone 7500C
Channel Pantone 283C, Rocks & Roads Pantone 410C
National Park Pantone 580C
Navigation Aids & Symbols
AS/NZS 1906.1:2007 Red, Yellow & Green

SP1029.

CABBAGE TREE BAY BOATING TRAFFIC MANAGEMENT PLAN



- CABBAGE TREE BOAT RAMP IS A COASTAL RAMP WHICH IS SUBJECTED TO ADVERSE OCEAN CONDITIONS
- LAUNCH AND RETRIEVAL OF VESSELS FROM THIS RAMP REQUIRES **EXTRA CARE** AT ALL TIMES
- THIS AREA IS POPULAR FOR SWIMMERS, SNORKELLING, PADDLE CRAFT AND SCUBA DIVING
- ALL VESSEL OPERATORS MUST **AT ALL TIMES** TRAVEL AT A SLOW SPEED AND MAINTAIN A PROPER LOOKOUT
- PWC OPERATORS MUST LEAVE CABBAGE TREE BAY AFTER THEY HAVE LAUNCHED THEIR CRAFT
- IT IS MANDATORY FOR ALL VESSELS LAUNCHING FROM THIS RAMP TO CARRY APPROVED **OFFSHORE SAFETY EQUIPMENT** AS CABBAGE TREE BAY IS CONSIDERED **OPEN WATERS**



PENALTIES APPLY

131236

Font style AS1744
Series D Medium

IP-CTB-C4 Issue 1 1.5.11
Revision 1 4.9.12 Revision 2 12.3.18