

Night work on the Croome Road and East West Link roundabout

Work is progressing on the Albion Park Rail bypass, with construction expected to be complete in 2022.

What are we doing?

We will be carrying out essential night work on the Croome Road and East West Link roundabout in September. This work will include relocating barriers and pavement work that will connect the new Croom Regional Sporting Complex access road to the roundabout temporarily.

Work is required outside normal project hours for the safety of workers and road users and to minimise traffic delays.

There will be up to three night shifts over a two week period, starting from **Sunday 22 September**, weather permitting. This work will be carried out between **7pm and 7am**.

Electronic signs will advertise specific dates in advance.

There may be some noise associated with this work and we will make every effort to minimise disruption by using noise shields, scheduling noisier activities earlier in the night and turning off machinery and vehicles when not in use.

Traffic changes

For the safety of road users and our workers, traffic control will be in place to ensure the work zones are safe.

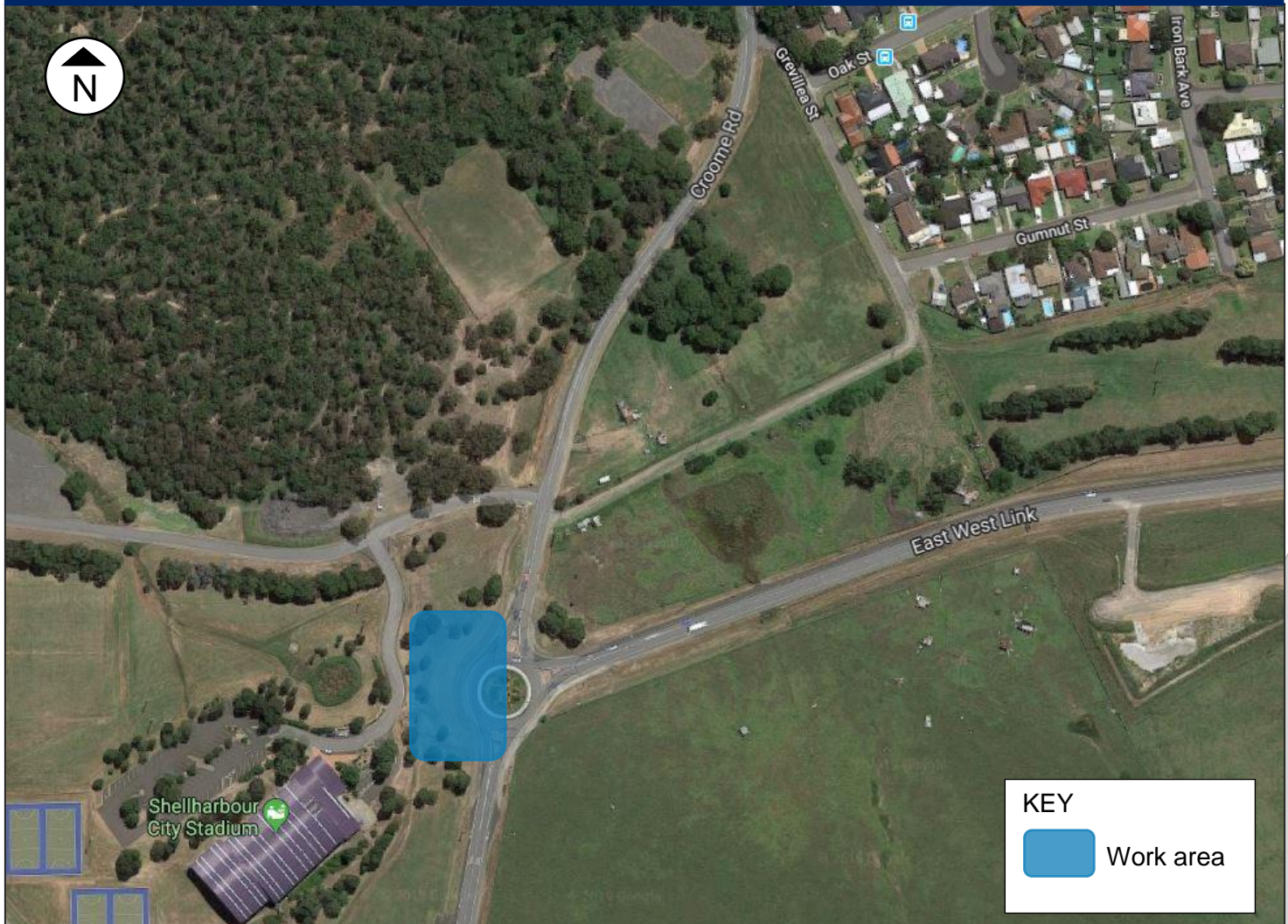
This may include lane closures, intermittent stop/slow traffic conditions and a reduced speed of 40km/h.

Please keep to the sign posted speed limits and follow the direction of traffic controllers at all times.

For the latest traffic updates call 132 701, visit livetraffic.com, or download the Live Traffic App.

We thank you for your patience during this important work.

Location of work – Croome Road and East West Link roundabout



Contact us

For more information on the project or if you have any questions, please contact our project team



1800 708 727, option 1 (24 hour toll free)



APRbypass@fultonhogan.com.au



rms.nsw.gov.au/aprb



If you need help understanding this information, please contact the Translating and Interpreting Service on 131 450 and ask them to call us on 1800 708 727, option 1.