

Albion Park Rail bypass

Project update

Roads and Maritime Services | September 2018



Picture of Croom Regional Sporting Complex once changes have been completed.

Roads and Maritime Services is planning an extension of the M1 Princes Motorway between Yallah and Oak Flats to bypass Albion Park Rail. The NSW Government is funding the \$630 million project, the bypass would complete the 'missing link' for a high standard road between Sydney and Bomaderry.

Early construction work underway at Croom Regional Sporting Complex

The first shovels hit the ground as part of the early work on the Albion Park Rail bypass project with work to make changes at Croom Regional Sporting Complex underway.

Work at the sporting complex includes building a new cricket and AFL oval, grass netball courts and changes to the rugby league fields as well as new parking, amenities buildings and landscaping.

This work will free up land that will become part of the 9.8 kilometre Albion Park Rail bypass.

We will continue to work with sporting groups and the community to ensure the impacts of this work are as minimal as possible.

Work at the sporting complex is expected to be finished by mid 2019, weather permitting.

Albion Park Rail bypass – concept design map



What has been happening on the project?

Work is complete on a turning lane on Croome Road, now open to construction vehicles.

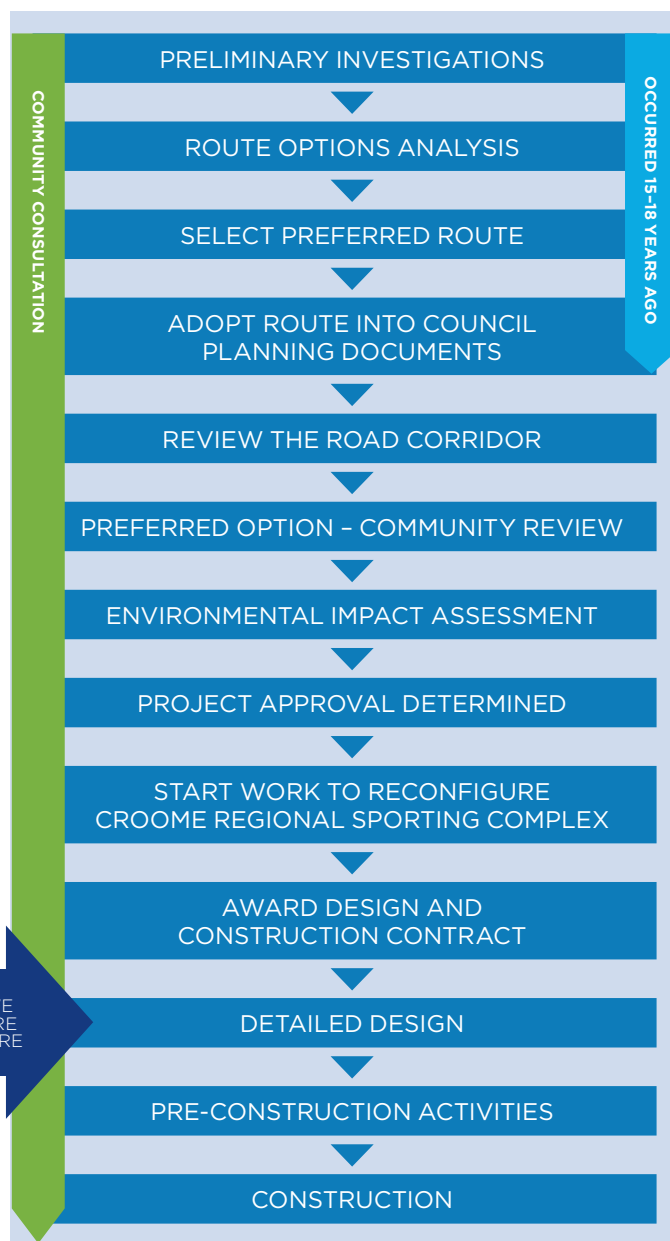
We have received approval from the Department of Planning and Environment to build the bypass. This follows extensive community engagement and working with stakeholders over recent years to refine the bypass' concept design.

A tender was advertised for suitably qualified contractors to develop and finalise the detailed design and build the bypass. The contract was awarded to Fulton Hogan, they have started work on the detailed design and expect this to be completed in early 2019.

Upcoming work

Work on the changes at Croom Regional Sporting Complex will continue on the new cricket/AFL field and Junior Rugby League amenities.

It is expected the design of the bypass will largely reflect the concept design previously displayed, however this next stage will include finalisation of urban design, landscaping and traffic control staging. The project team will engage with the community and stakeholders, where relevant, to finalise the design in preparation for major construction work on the bypass to commence in early 2019.



Better and more
reliable trips
for locals, tourists, businesses and freight

Last town to be bypassed between
Sydney and Bomaderry

Increase road capacity



Planning for the future

Up to
30% travel time saving

From September, Fulton Hogan will carry out work activities in preparation to start major construction in early 2019. These work activities will include:

- Carrying out geotechnical and land survey
- Establishing temporary site compounds and storage areas
- Installation of property boundary fencing
- Investigation and relocation of utility services including drainage, water, electricity and communication cables
- Setting up water basins, dust monitors and sediment fencing to reduce impacts on the environment.

Generally, these activities will be carried out between 7am and 7pm from Monday to Friday and 8am to 5pm on Saturday, weather permitting.

We will notify the community and stakeholders before major construction work begins on the project. If you would like to be kept updated about the project, please contact the project team to register your details at APRbypass@fultonhogan.com.au.

Contact us

If you have any questions or would like more information on the Albion Park Rail bypass project please contact the project team on:



1800 708 727



APRbypass@fultonhogan.com.au



rms.nsw.gov.au/aprb



Albion Park Rail bypass team
PO Box 1014,
Albion Park Rail NSW



131 450

If you need help understanding this information, please contact the Translating and Interpreting Service on 131 450 and ask them to call us on 1800 708 727.



September 2018

RMS 18.1003



Privacy Roads and Maritime Services ("RMS") is subject to the Privacy and Personal Information Protection Act 1998 ("PPIP Act") which requires that we comply with the Information Privacy Principles set out in the PPIP Act. All information in correspondence is collected for the sole purpose of delivering this project. The information received, including names and addresses of respondents, may be published in subsequent documents unless a clear indication is given in the correspondence that all or part of that information is not to be published. Otherwise RMS will only disclose your personal information, without your consent, if authorised by the law. Your personal information will be held by RMS at 90 Crown Street, Wollongong NSW 2500. You have the right to access and correct the information if you believe that it is incorrect.