

Out of hours work in May at Yallah for the Albion Park Rail bypass

Work is progressing on the Albion Park Rail bypass, with construction expected to be complete in 2022. We will be carrying out essential work on the Princes Motorway, Yallah Road and the Princes Highway southbound entry ramp at Yallah.

What are we doing?

Earthworks, road pavement and bridge construction work including saw cutting, hammering, installing drainage, installing and relocating utility services, street lighting and signage, line-marking, placement and removal of temporary traffic barriers and traffic controls.

Princes Motorway and Princes Highway, Yallah

From **Sunday 26 April**, work will be carried out on the Princes Motorway between **7pm** and **7am**, for around **20 nights over five-weeks**, weather permitting.

Traffic on the motorway will sometimes be reduced to one lane in each direction between Yallah Road and the Dapto off-ramp. The Dapto off-ramp will remain open during this work.

The southbound Princes Highway entry ramp at Yallah will be closed for around **four nights** between **Monday 27 April** and **Friday 8 May**, weather permitting. A light vehicle detour will be in place during this time via Marshall Mount Road and heavy vehicles via Northcliffe Drive.

Yallah Road, Yallah

For around **five nights** between **Monday 11** and **Monday 25 May**, Yallah Road will be closed for bridge work to be carried out under the new bridge over Yallah Road, weather permitting.

A detour will be in place via Marshall Mount Road.

Utility outages

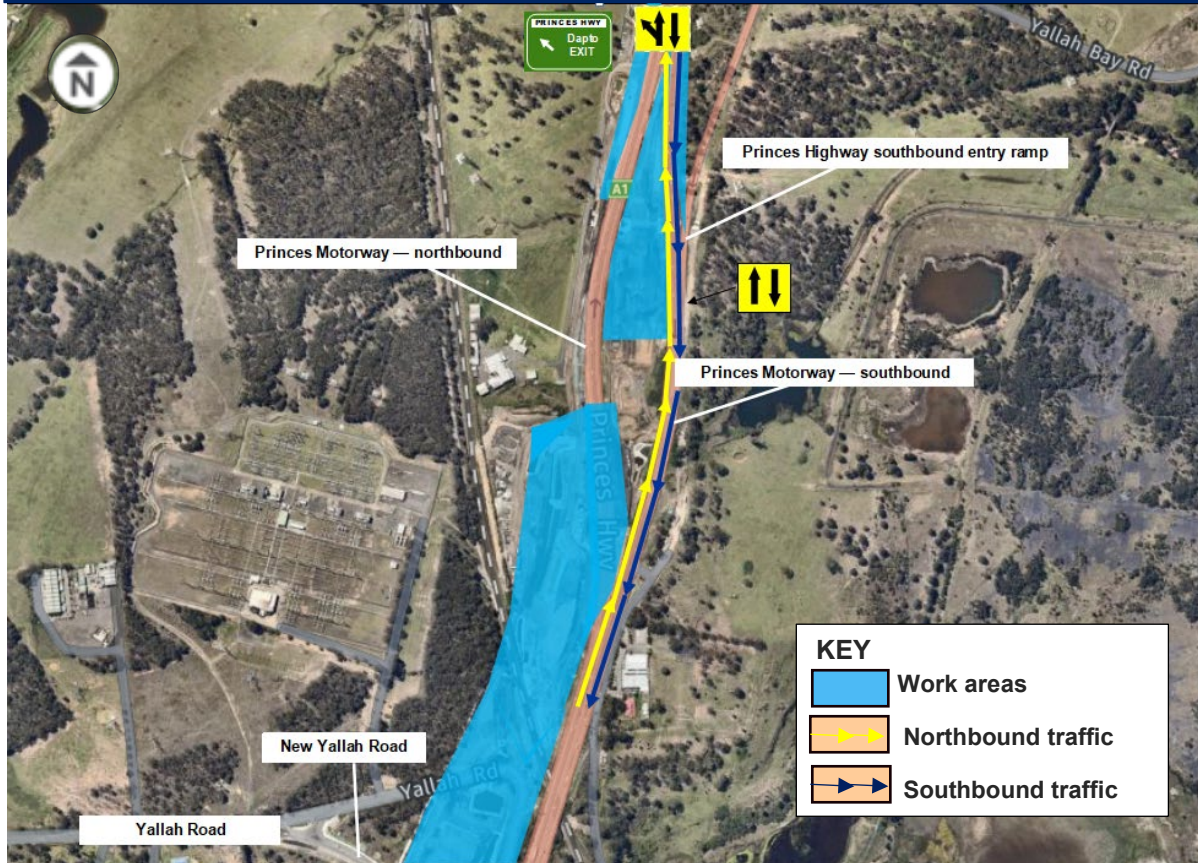
Properties impacted by utility outages will be notified separately by the service providers.

Traffic changes

Traffic control will be in place for the safety of workers and road users, including temporary road and lane closures, intermittent stop/slow traffic conditions, and a reduced speed of 40km/h during work.

Please call 132 701, visit [livetraffic.com](https://www.livetraffic.com), or download the Live Traffic App for the latest traffic information.

Location of work and traffic changes, Yallah



Contact us

For more information on the project or if you have any questions, please contact our project team



1800 708 727 (24 hour toll free)



APRbypass@fultonhogan.com.au



rms.nsw.gov.au/aprb



If you need help understanding this information, please contact the Translating and Interpreting Service on 131 450 and ask them to call us on 1800 708 727.