



Transport for NSW

Albion Park Rail bypass

Project update | August 2020



Work is progressing on the Albion Park Rail bypass with the first bridge now open to traffic

Bridge into Albion Park open to traffic

The first of the project's 13 bridges opened to traffic following a weekend closure of the Illawarra Highway in mid-May.

When the project is complete, this bridge will become the southbound exit ramp into Albion Park.

The bridge is 65 metres long, and has 10 Super-T girders, each 1.5 metres deep and weighing more than 60 tonnes.

About 190m³ of concrete was poured for the bridge deck, and the supporting concrete pier in the motorway median took over 12 hours of continuous concrete pouring to complete.



A video of the crew working over the weekend closure to deliver this milestone is on the project website roads-maritime.transport.nsw.gov.au



First cars to drive over the new bridge into Albion Park

What we've been doing

Since May 2020 we have:

- opened the new bridge into Albion Park
- installed planks on the bridge over the South Coast railway line during a rail closure
- opened the Croom Regional Sporting Complex access road and shared path
- implemented temporary traffic changes and pavement widening on Tongarra Road
- continued bridge construction and earthworks across the project
- installed 230 bridge planks on the bridge over Macquarie Rivulet and 129 bridge planks on the bridge over the Princes Motorway in Yallah
- placed the first layers of road pavement on sections of the main bypass
- installed drainage, signage, street lighting, guardrail and traffic signals.

What's coming up?

In the coming months we will be:

- opening new sections of road including Croom Road bridge and the East West Link
- implementing temporary traffic changes and widening the Princes Highway under the Oak Flats interchange
- installing bridge planks on the remaining three bridges
- continuing with pavement construction, asphaltting and line marking
- landscaping and revegetating.



All 230 planks have been installed on the bridge over Macquarie Rivulet - May 2020

Community feedback

We are seeking feedback on your experience with the project team during the construction of the Albion Park Rail bypass project.

The feedback form should take less than five minutes to complete and you can remain anonymous.

Please provide your feedback by **Friday 17 August 2020**.

This feedback form is available online at nswroads.work/aprbstakeholder.

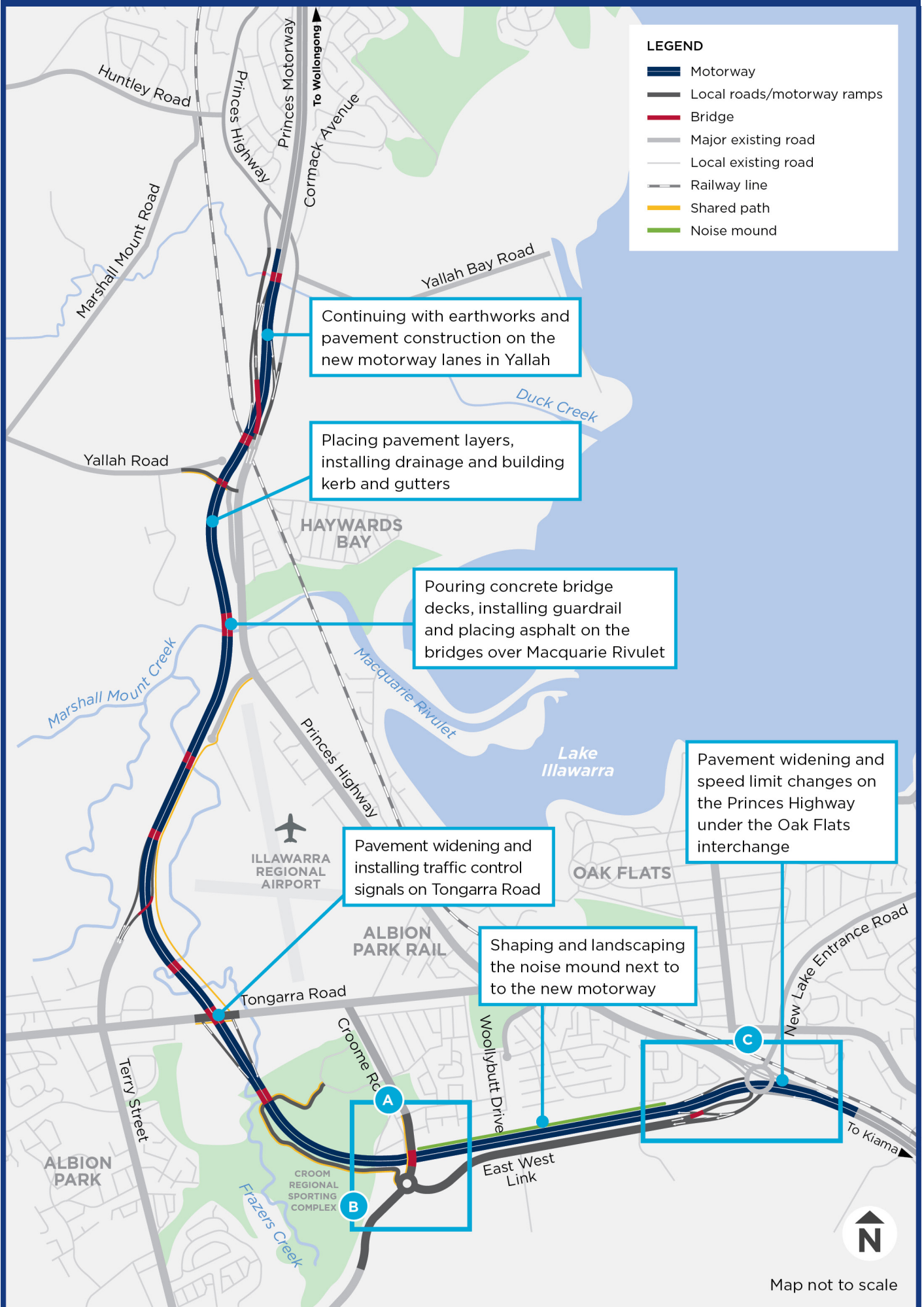


Drainage work under the East West Link - April 2020



Placing pavement on the southbound entry ramp at Tongarra Road - June 2020

Upcoming work



A Croome Road bridge and shared path

The new Croome Road bridge and shared path is expected to open in late August, weather permitting. Work will continue on the new motorway below.

To prepare for these changes there will be a temporary closure of Croome Road between Cedar Street and the East West Link for up to three weeks from **Monday 3 August 2020**, weather permitting. Traffic will detour via the East West Link and Ashburton Drive or the Princes Highway and Tongarra Road.

For more information, visit the project website roads-maritime.transport.nsw.gov.au.

We thank you for your patience during this closure and look forward to opening the bridge to traffic.



Aerial image of Croome Road - June 2020

B Final stage of Croom Regional Sporting Complex access road

The final section of the Croom Regional Sporting Complex access road is expected to open in the coming months.

This will connect the access road to the Croome Road and East West Link roundabout. The temporary southern entrance gate south of the Croome Road and East West Link roundabout will close as part of these changes.

More information will be provided to the sporting clubs and will be available on the website soon.

C Traffic changes on the East West Link

Another section of the East West Link will open to traffic in the coming months to allow work to continue on the new motorway.

The new section of road will temporarily connect the existing East West Link to the Oak Flats interchange.

Motorists wishing to travel west on the East West Link into Albion Park will continue to access the road via the Oak Flats interchange.

Motorists travelling east along the East West Link will continue onto the Oak Flats interchange using one of two lanes.

There will be some traffic changes on the Oak Flats interchange during this work including pavement widening for additional lanes.

We will be removing the temporary roundabout at the intersection of the East West Link and Cleary Bros quarry and will install a new set of traffic lights after traffic changes.

Cyclists will be able to access the East West Link via the Oak Flats interchange. The northbound Princes Highway exit ramp will be widened and the cyclist shoulder lane reopened.

For the safety of workers and motorists, some of this work will need to be carried out at night.

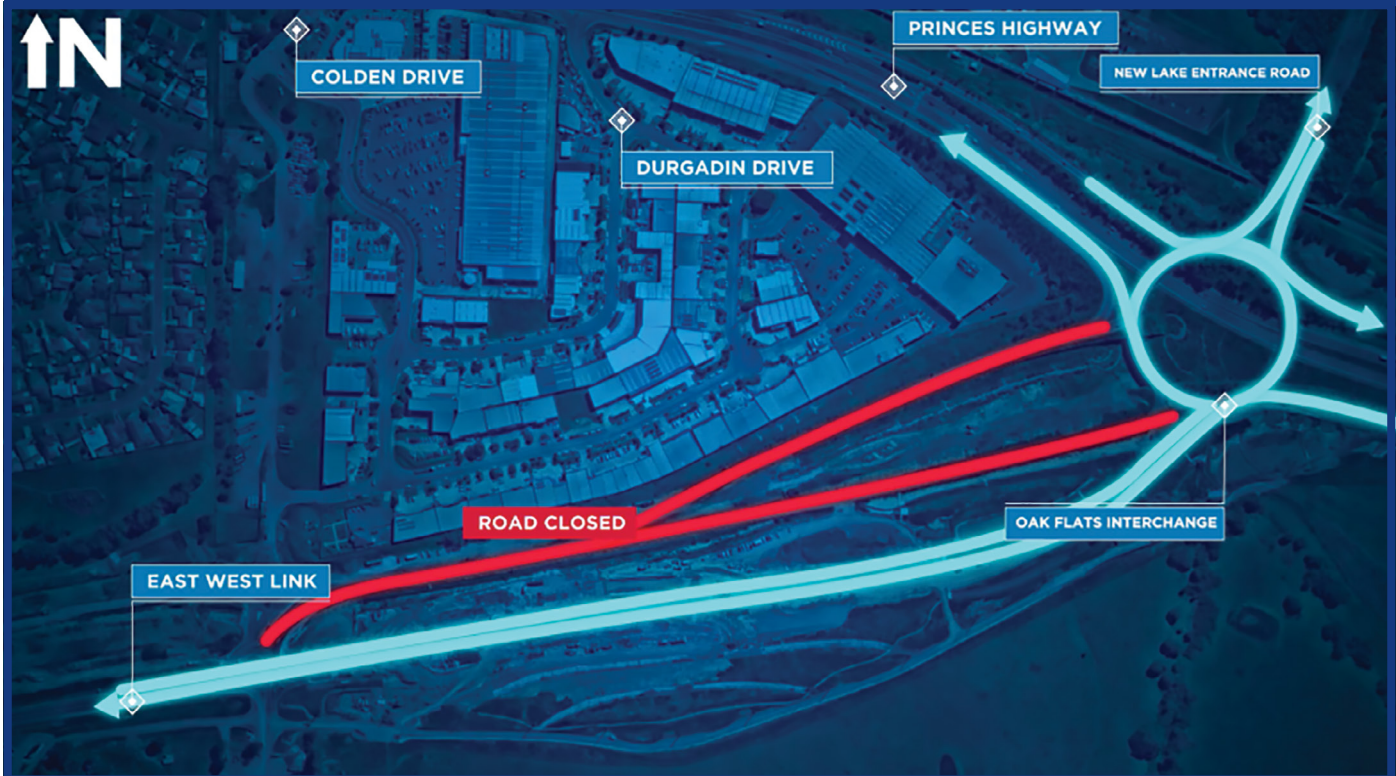
Traffic control and reduced speeds will be in place to ensure the safety of motorists and workers. Motorists are advised to drive to the conditions, and follow the directions of signs and traffic control at all times.

Electronic signs will advertise specific dates in advance.



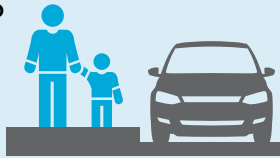
An animation showing these traffic changes can be found on the project website roads-maritime.transport.nsw.gov.au.

Upcoming traffic changes on the East West Link



Did you know?

Road pavements are made up of multiple layers of material which are usually arranged with the highest load bearing capacity on the top and lowest on the bottom



About **70 per cent** of workers are from the local community




12 trainees & 16 apprentices on site



21 per cent are engaged as learning workers

Contact us

If you have any questions or would like more information on the Albion Park Rail bypass project please contact the project team on:

 1800 708 727

 APRbypass@fultonhogan.com.au

 roads.maritime-transport.nsw.gov.au

 Follow us on Facebook @NSW Roads

 Albion Park Rail bypass team
PO Box 1014,
Albion Park Rail NSW



This document contains important information about road projects in your area. If you require the services of an interpreter, please contact the Translating and Interpreting Service on 131 450 and ask them to call the project team on 1800 708 727. The interpreter will then assist you with translation.



Princes Motorway at Yallah – May 2020



Croom Regional Sporting Complex shared path – May 2020



Building kerb on the new Croome Road – June 2020



Rock profiler in Yallah – May 2020

August 2020
20.271



Privacy Transport for NSW ("TfNSW") is subject to the Privacy and Personal Information Protection Act 1998 ("PPIP Act") which requires that we comply with the Information Privacy Principles set out in the PPPI Act. All information in correspondence is collected for the sole purpose of assisting in the delivery of this project. The information received, including names and addresses of respondents, may be published in subsequent documents unless a clear indication is given in the correspondence that all or part of that information is not to be published. Otherwise TfNSW will only disclose your personal information, without your consent, if authorised by the law. Your personal information will be held by TfNSW at 90 Crown Street, Wollongong NSW 2500. You have the right to access and correct the information if you believe that it is incorrect.