



View of Alfords Point Road looking north

Alfords Point Road Southern Approach Georges River to Brushwood Drive

July 2016

The NSW Government is building this \$40 million upgrade to widen Alfords Point Road between the Georges River and Brushwood Drive to improve traffic flow and road safety.

Roads and Maritime Services has contracted Nace Civil Engineering to upgrade Alfords Point Road. Early preparation work began in March 2016. Major construction started in April 2016 and the upgrade is due to be completed by December 2017, weather permitting.

Key benefits

Alfords Point Road is an important road in Southern Sydney, providing access across the Georges River for motorists, commuters, cyclists and transport vehicles. Roads and Maritime has been working to reduce congestion, improve travel times and improve road safety on the route by:

- Completing the duplication of Alfords Point Bridge in 2008
- Upgrading the Alfords Point Bridge Northern Approach in late 2011.

This upgrade between Georges River and Brushwood Drive will provide further improvements to the local road network.



Electronic message sign looking south



View of Alfords Point Road from the air

Key features

- Widening Alfords Point Road between Georges River and Brushwood Drive from two lanes to three lanes in each direction
- Improving traffic flow to and from Brushwood Drive on and off-ramps by using the new lanes
- Providing a central barrier to improve safety by dividing the northbound and southbound carriageways
- Relocating the northbound bus bay on Alfords Point Road on-ramp near Eucalyptus Street, to a location around 100 metres to the south
- Providing a new road surface and improved drainage system
- Providing a breakdown bay along the southbound carriageway located around midway between the Georges River and Brushwood Drive
- Relocating the Heavy Vehicle Inspection Station on the southbound carriageway to beneath the Old Illawarra Road bridge, around 900 metres south of Brushwood Drive (please refer to the location map)
- Realigning the pedestrian path on the eastern side of Alfords Point Road
- Adjusting existing noise walls and providing a new noise wall along the route (see location map for details)
- Providing cycleway access from Alfords Point Road.

What's happening now?

Roads and Maritime has started major construction work including:

- Installing a detour for the duration of the southbound widening construction from Maxwell Close to Brushwood Drive off-ramp until December 2017. Please refer to the map under traffic changes for further information
- Relocation of Telstra assets
- Construction of a new Heavy Vehicle Inspection Station on the eastern side of Alfords Point Road, under the Old Illawarra Road overbridge
- Major earthwork on the eastern side of Alfords Point Road
- Construction of the Brushwood Drive off-ramp
- Eastern rock face stabilisation work
- Construction of the eastern noise wall.

We will continue to keep you informed at key stages of the project.

Managing impacts during construction

There will be some disruption while we complete this work including changed traffic conditions, noise, vibration, dust, lighting during night work and access to property. Construction activities will be carried out in accordance with the project's Construction Environmental Management Plan. We will make every effort to minimise impacts by:

- Notifying residents in advance of work
- Carrying out work during standard construction hours wherever possible
- Servicing and maintaining machinery and equipment to limit noise and emissions. Temporary, electronic message signs will also be installed to inform motorists of upcoming work and changed traffic conditions.

Construction hours

Construction will generally be carried out during standard construction hours including;

- **7am to 6pm** Monday to Friday
- **8am to 1pm** Saturdays when required.

Some work will need to be carried out at night to maintain safety measures, lessen impact on the road network and maintain the service continuity of utilities when they are being relocated. All work outside of standard construction hours will be carried out in accordance with the relevant approvals and residents and businesses will be notified in advance.

Noise levels

There will be some noise associated with this work. We will make every effort to minimise noise by arranging the work in stages at different locations.

Traffic changes

There will be some temporary traffic changes to ensure the work zone is safe. A major change is the pedestrian and cycling detour. Figure 2 shows where this will be.

Rock walls along Alfords Point Road



A pedestrian/cycling detour is in place for the duration of the southbound widening construction, from Maxwell Close to Brushwood Drive off-ramp until December 2017. Please refer to the map for further information.

In addition, lane closures will be in place and may affect travel times. Please keep to speed limits and follow the direction of traffic controllers and signs. For the latest traffic updates, you can call **132 701**, visit livetraffic.com or download the Live Traffic NSW App.

Thank you for your patience during this important work.

Q: What will happen at the Brushwood Drive on ramp?

Currently, peak hour traffic merging from the Brushwood Drive on-ramp onto Alfords Point Road creates heavy congestion along Brushwood Drive. As part of the project, the Brushwood Drive and Alfords Point Road merge point will be removed and traffic conditions and signage will be changed to improve road safety and travel times. We will notify the community well before this change happens.

Q: What noise mitigation techniques are being used for residents near the road?

During the detailed design stage, investigations were carried out on feasible and reasonable noise mitigation. Noise reduction measures include the extension of an existing noise wall, construction of a new noise wall and architectural improvements for properties identified with the potential to experience increased noise as a result of the project.

Q. Why is the existing bus stop on the Brushwood Drive on-ramp being relocated?

The existing bus stop on the Brushwood Drive on-ramp is in a location with poor sight distances for buses. Relocating the bus stop around 100 metres south will reduce congestion on the Brushwood Drive on-ramp, reduce the likelihood of vehicle crashes and improve road safety for motorists and pedestrians.

Figure 1: Alfords Point Road upgrade at a glance

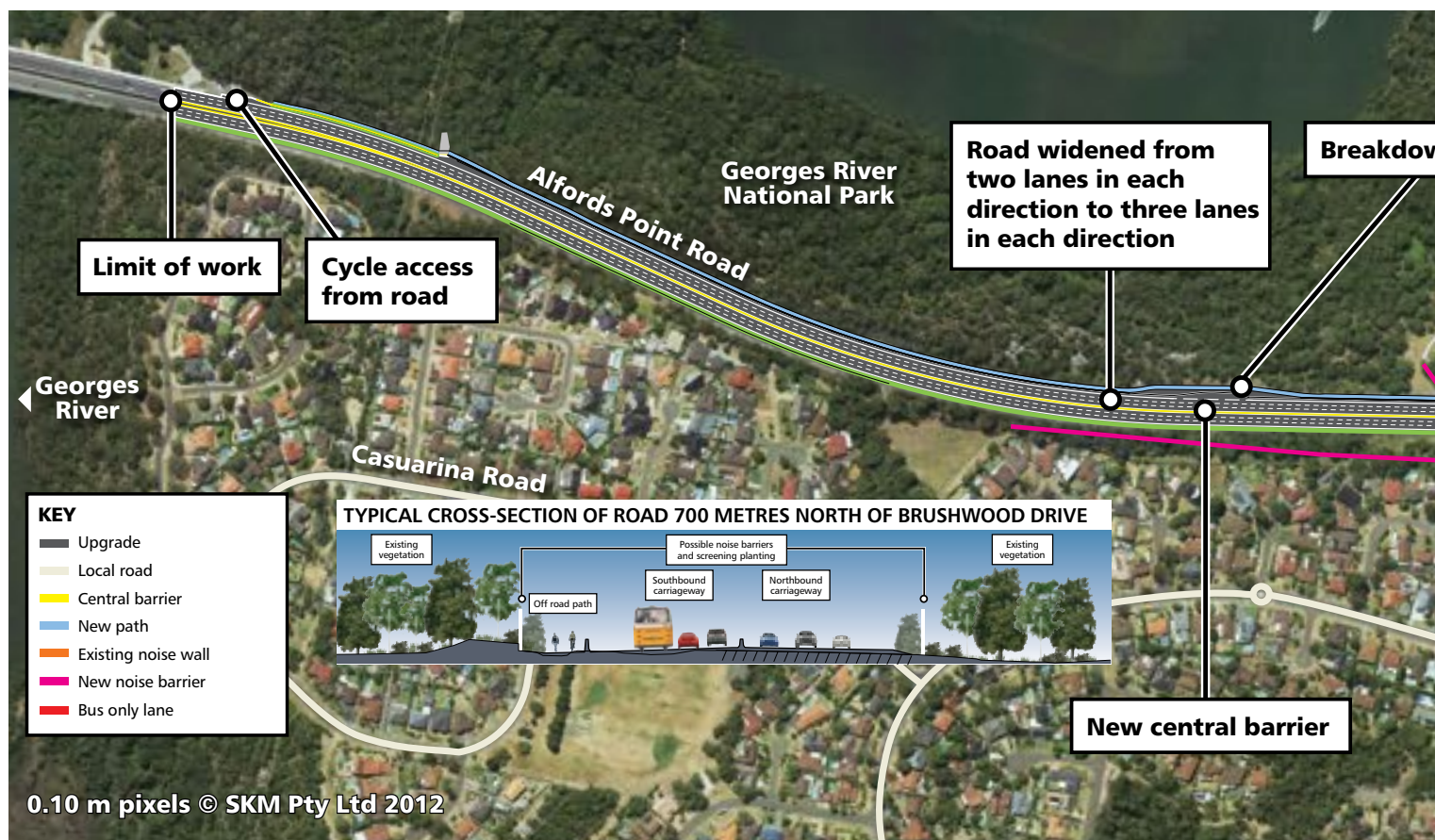
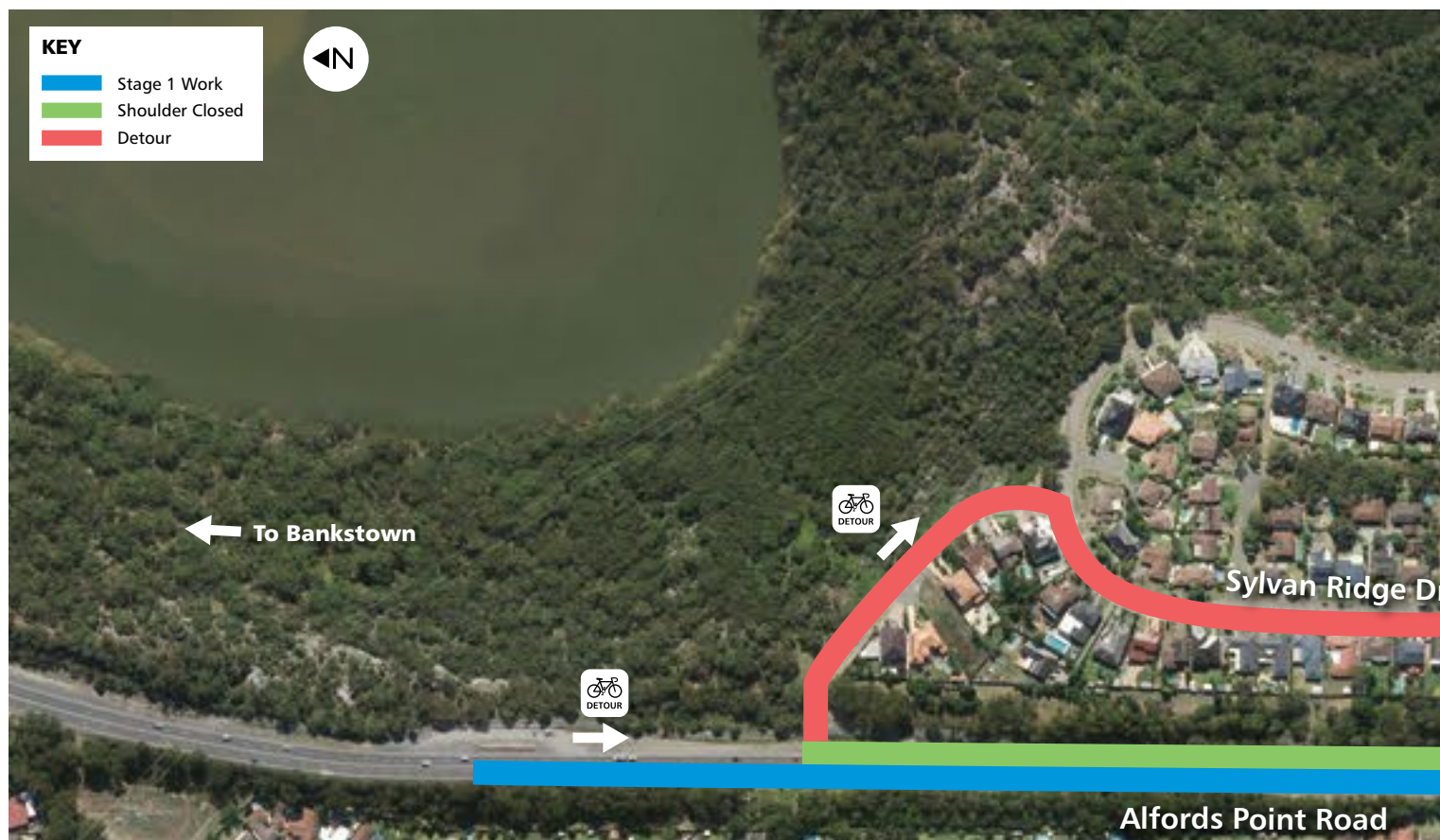


Figure 2: Cycle/Pedestrian Detour







Construction of the Brushwood Drive off-ramp

Further information

For further information, please contact the project team:

 1800 790 637 during business hours

 alfordspoint@rms.nsw.gov.au

 Alford's Point Road Upgrade
Roads and Maritime Services
PO Box 973
Parramatta NSW 2124

 rms.nsw.gov.au/projects



This document contains important information about road projects in your area. If you require the services of an interpreter, please contact the Translating and Interpreting Service on **131 450** and ask them to call the project team on **1800 790 637**. The interpreter will then assist you with translation.



View of Alford's Point Road looking south



July 2016
RMS 16.306



Privacy Roads and Maritime Services ("RMS") is subject to the Privacy and Personal Information Protection Act 1998 ("PPIP Act") which requires that we comply with the Information Privacy Principles set out in the PPIP Act. All information in correspondence is collected for the sole purpose of assisting in the progress of this road upgrade. The information received, including names and addresses of respondents, may be published in subsequent documents unless a clear indication is given in the correspondence that all or part of that information is not to be published. Otherwise RMS will only disclose your personal information, without your consent, if authorised by the law. Your personal information will be held by RMS at 27 Argyle Street, Parramatta NSW 2150. You have the right to access and correct the information if you believe that it is incorrect.