

JULY 2012

## Alfords Point Road Southern Approach

### Georges River to Brushwood Drive

Roads and Maritime Services (RMS) is planning for the future upgrade of Alfords Point Road, to the south of Alfords Point Bridge, Georges River to improve traffic flow and road safety in the road corridor.

The preliminary concept design to widen Alfords Point Road from a four-lane road to six-lane divided road is on display for community comments until **Friday 24 August 2012**. The preliminary concept design includes proposed works to the Brushwood Drive on and off ramps at Alfords Point.

### Background

Alfords Point Road is a key road in southern Sydney, providing access across the Georges River for motorists, commuters, cyclists and freight.

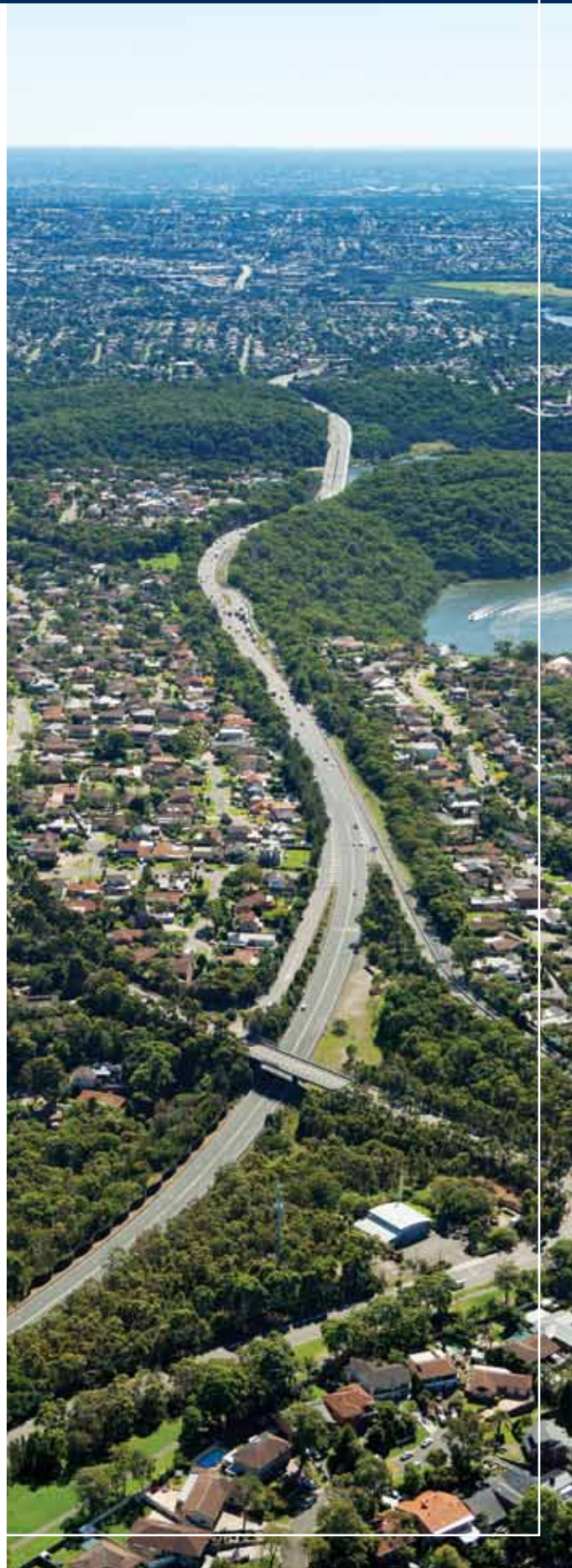
RMS has been working to improve travel times and road safety on the route by:

- duplicating Alfords Point Bridge in 2008
- upgrading the Alfords Point Bridge northern approach in late 2011
- planning to upgrade Alfords Point Road between Georges River and Brushwood Drive.

The upgrade is currently in the planning phase and construction time frames are unknown at this stage.

Please view the back of this update for information on how to view the preliminary concept design.

**Have your say!** See inside for more details



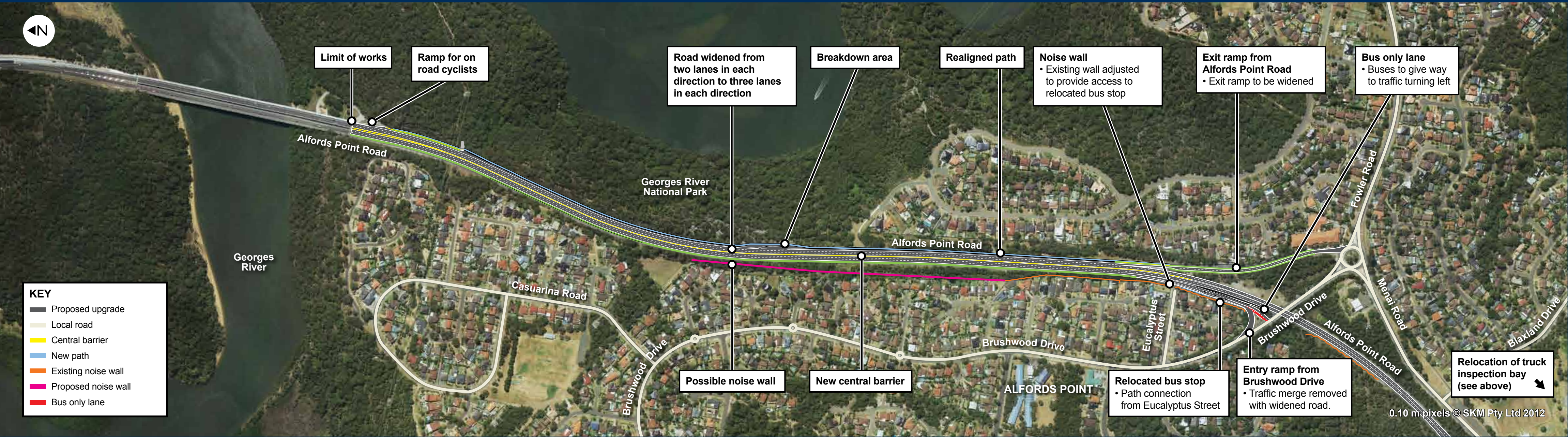


Key features of the proposed upgrade:

- Widen Alford's Point Road between Georges River and Brushwood Drive from two lanes to three lanes in each direction.
- Improve traffic flow to and from Brushwood Drive on and off ramps by using the new lanes.
- A central barrier to improve safety by dividing the northbound and southbound carriageways.
- Relocate the northbound bus bay on Alford's Point Road on ramp near Eucalyptus Street, to a location approximately 100 metres to the south.
- New road surface and improved drainage system.
- A breakdown bay along the southbound carriageway located approximately mid-way between the Georges River and Brushwood Drive.
- A formal truck inspection area along the southbound carriageway relocated beneath Old Illawarra Road bridge, approximately 900 metres south of Brushwood Drive.
- Realign the pedestrian path on the eastern side of Alford's Point Road.
- Adjustments to existing noise walls, possible noise walls and/or architectural treatments to address acute noise.
- A ramp for on road cyclists is proposed.



Alford's Point Road proposed upgrade







## What's happening now?

RMS will prepare concept design and environmental studies.

Field investigations are underway. The tasks include survey, geotechnical investigations, flora and fauna studies, noise monitoring and examination of heritage issues, including those of Aboriginal cultural significance. These investigations are a critical part of the project planning, and will guide the design of the proposed road upgrade together with community feedback.

## What happens next?

RMS will provide information and involve the community during the planning of Alford's Point Road southern approach upgrade, including community information sessions, website updates and community update newsletters.

Community discussions will be sought in the first half of 2013 with the display of the concept design and environment assessment.

## Noise levels in the road corridor

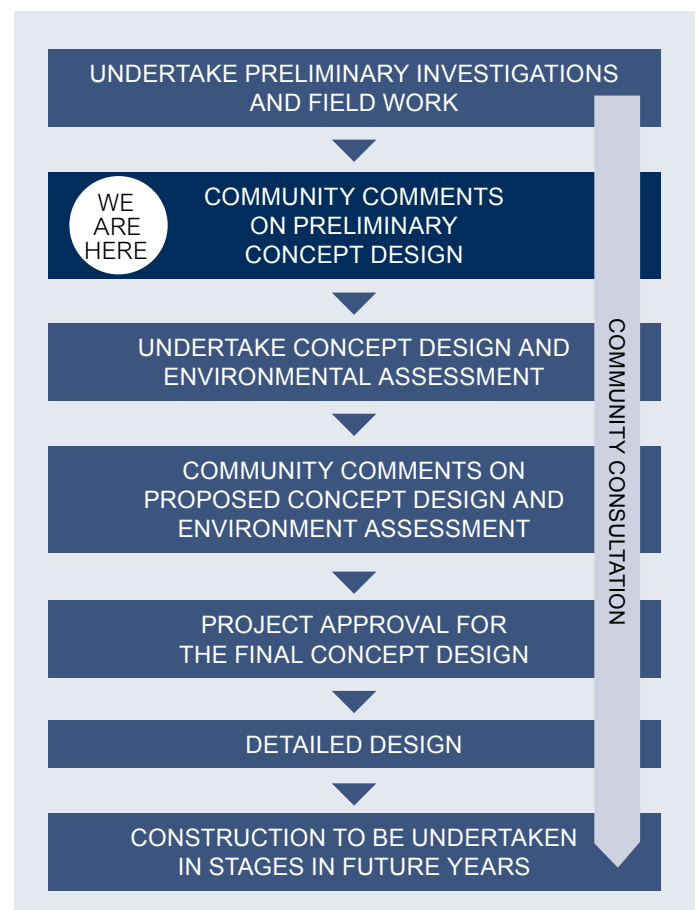
A noise assessment has been completed to document existing noise levels and model future predicted noise levels in the road corridor. Noise investigations show existing noise levels are currently acute in some locations. The noise model shows noise levels would generally remain the same as existing after Alford's Point Road is widened.

As a result, RMS is currently investigating several noise reduction measures for homes currently receiving acute noise levels. Measures to manage are a noise wall, architectural treatment to individual homes or a combination of these two measures.

There are positives and negatives to consider for each option including feasibility, constructability and visual impact.

RMS is assessing if a noise wall is the best option and then if the proposed locations are suitable. Please see the preliminary concept design (overleaf) to see possible noise wall locations. Up-to-date information will be available at the community information session on noise investigations, please drop by to talk to RMS staff.

Dates and locations are on the back of this update. To view or download RMS's 'How is Noise Addressed?' information brochure, please view the 'resources' page at [www.rms.nsw.gov.au/roadprojects](http://www.rms.nsw.gov.au/roadprojects).



# Have your say

## Shopping centre displays

RMS will host two shopping centre displays where you can drop by and speak to the project team at the following times:

- **Menai Marketplace Shopping Centre**  
152-194 Allison Crescent, Menai  
Thursday 26 July 2012  
Between 3pm and 7pm  
Thursday 2 August  
Between 3pm and 7pm

## Community information session

RMS values your views about the project and will host a community information session on **Saturday 4 August 2012**.

RMS project team members will be available to answer questions and receive feedback. A formal presentation will not be given, so please feel free to drop in at any time during this information session:

### Menai Community Centre

34 Allison Crescent, Menai  
Saturday 4 August 2012  
Between 10am and 1pm

Light refreshments and snacks will be available on the day.

## Public display locations

The preliminary concept design is on display until **Friday 24 August 2012** at the following locations:

- **Sutherland Library**  
30-36 Belmont Street, Sutherland  
Monday to Friday 9am – 9pm  
Saturday 9am – 4pm  
Sunday 12pm – 4pm
- **Menai Library**  
34-40 Allison Crescent, Menai  
Monday, Tuesday, Thursday 9.30am – 8pm  
Wednesday and Friday 9.30am – 5pm  
Saturday 9am – 12pm
- **Padstow Motor Registry**  
Shop 1, 11 Cahors Road, Padstow  
Monday to Friday 8.30am – 5pm  
Saturday 8.30am – 12pm

## Your written comments

Please send written comments by **Friday 24 August 2012** to:

**Alfords Point Road Southern  
Approach upgrade project**  
Infrastructure Development  
Roads and Maritime Services  
PO Box 937  
Parramatta NSW 2124

Fax to 02 8849 2817

Or email comments to:  
[Kali.Gupta@rms.nsw.gov.au](mailto:Kali.Gupta@rms.nsw.gov.au)

Please view the project website at  
[www.rms.nsw.gov.au/roadprojects](http://www.rms.nsw.gov.au/roadprojects)  
for more information.



## Roads and Maritime Services

**Privacy:** Roads and Maritime Services ("RMS") is subject to the *Privacy and Personal Information Protection Act 1998* ("PPIP Act") which requires that we comply with the Information Privacy Principles set out in the PPIP Act.

All information in correspondence is collected for the sole purpose of assisting in the assessment of this proposal. The information received, including names and addresses of respondents, may be published in subsequent documents unless a clear indication is given in the correspondence that all or part of that information is not to be published. Otherwise RMS will only disclose your personal information, without your consent, if authorised by the law. Your personal information will be held by RMS at 27 Argyle Street, Parramatta NSW 2150. You have the right to access and correct the information if you believe that it is incorrect.