

Night work and detour on Alfords Point Road, Alfords Point , Wednesday 30 November to Friday 2 December

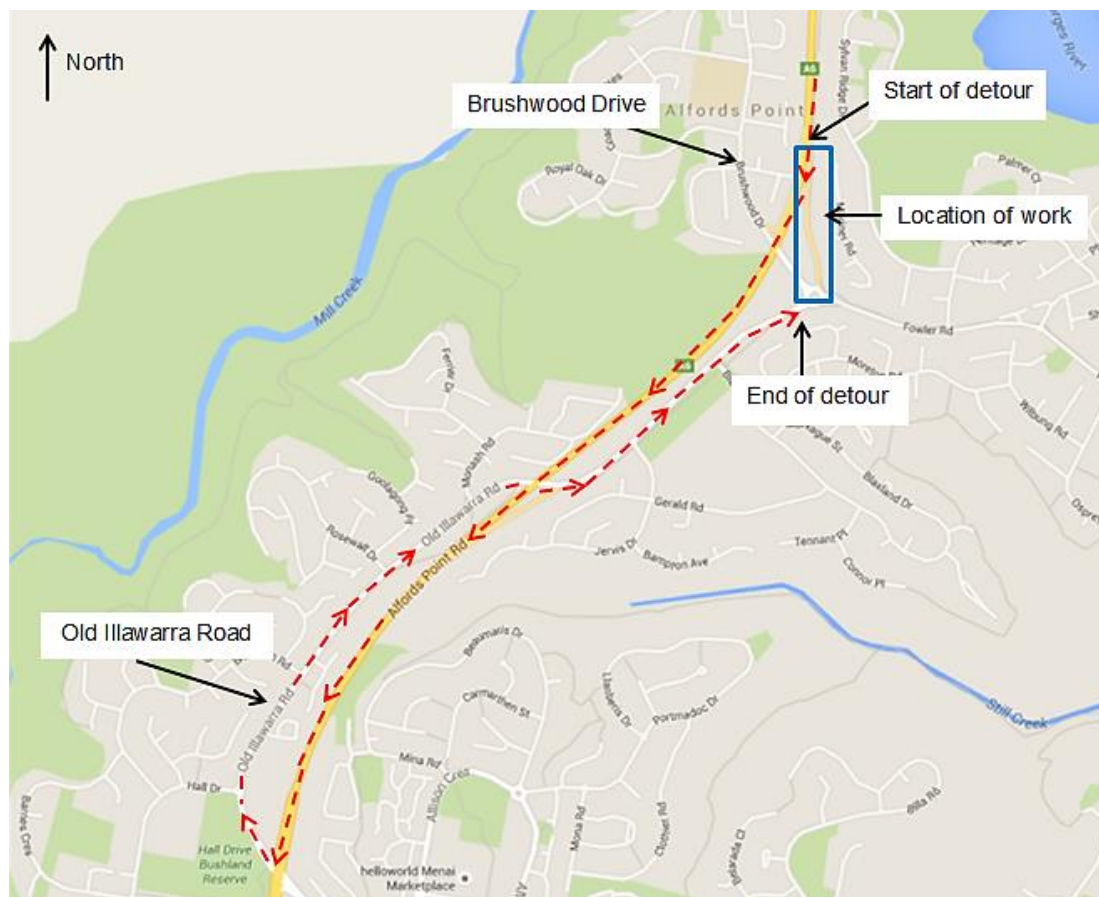
The NSW Government is funding this \$40 million project to improve safety and traffic flow on Alfords Point Road between Georges River and Brushwood Drive, Alfords Point.

Roads and Maritime Services is continuing to deliver this important project. As part of this work, we will carry out asphaltting on the south bound carriageway of Alfords Point Road, Alfords Point, on and around the Brushwood Drive off ramp, **Wednesday 30 November to Friday 2 December**. This work will be carried out at night to minimise impact to motorists and is part of previously advised November and December night work construction activity.

To ensure the safety of motorists and road workers, the Brushwood Drive off ramp will be closed during this work and a detour in place. Traffic barriers will be installed and electronic message signs and road work advisory signs will notify motorists of the changed traffic arrangements.

The work will take up to **three shifts** between **Wednesday 30 November** and **Friday 2 December**, weather permitting. Our working hours will be from **7pm to 5am**.

We have provided a map to show the location of the work.



How will the work affect you?

There will be some noise and light associated with this work. Every effort will be made to minimise noise by arranging the work in stages at different locations across this period. Every effort will be made to focus the light only on the working area, however there is likely to be some spill-over of light into some nearby residences.

Traffic changes

During this work the Brushwood Drive off ramp will be closed. Motorists will be diverted to Old Illawarra Road where they can travel north to access Brushwood Drive and Fowler Road.

The Brushwood Drive off ramp closure and detour may affect travel times. Motorists are asked to factor additional travel time into their journey.

Traffic controls will be in place. Please keep to speed limits and follow the direction of traffic controllers and detour signs. For the latest traffic updates, you can call 132 701, visit livetraffic.com or download the Live Traffic NSW App.

Contact

If you have any questions, please call our Project Manager Ken Vo on 0407 900 287 or email AlfordsPointUpgrade@rms.nsw.gov.au. For more information on our projects, visit rms.nsw.gov.au.

Thank you for your patience during this important work.



Translating and Interpreting Service

If you need an interpreter, please call the Translating and Interpreting Service (TIS National) on **131 450** and ask them to telephone Roads and Maritime Services on 1800 035 733

Arabic

إذا كنتم بحاجة إلى مترجم، الرجاء الاتصال بخدمة الترجمة الخطية والشفهية (TIS National) على الرقم **131 450**، والطلب منهم الاتصال بوكالتكم Roads and Maritime Services على الرقم 1800 035 733

Cantonese

若你需要口譯員，請致電 **131 450** 聯絡翻譯和口譯服務署 (TIS National)，要求他們致電 1800 035 733 聯絡 Roads and Maritime Services。

Mandarin

如果你需要口译员，请致电 **131 450** 联系翻译和口译服务署 (TIS National)，要求他们致电 1800 035 733 联系 Roads and Maritime Services。

Greek

Αν χρειάζεστε διερμηνέα, παρακαλείσθε να τηλεφωνήσετε στην Υπηρεσία Μετάφρασης και Διερμηνείας (Εθνική Υπηρεσία TIS) στο **131 450** και ζητήστε να τηλεφωνήσουν Roads and Maritime Services στο 1800 035 733

Italian

Se desiderate l'assistenza di un interprete, prego telefonare al Servizio Interpreti e Traduttori (TIS National) al **131 450** chiedendo di contattare Roads and Maritime Services al 1800 035 733

Korean

통역사가 필요하시면 번역통역서비스 (TIS National) 에 **131 450** 으로 연락하여 이들에게 1800 035 733 번으로 Roads and Maritime Services 에 전화하도록 요청하십시오.

Vietnamese

Nếu cần thông ngôn viên, xin quý vị gọi cho Dịch Vụ Thông Phiên Dịch (TIS Toàn Quốc) qua số **131 450** và nhờ họ gọi cho Roads and Maritime Services qua số 1800 035 733