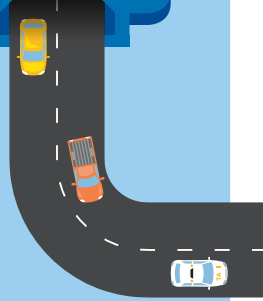




# Amherst Street Noise Wall



We're planning to build a new noise wall on the Amherst Street off ramp to help reduce traffic noise for nearby residents on Jenkins Street, Cammeray.

## Help us with our planning

To ensure we build the new noise wall as quickly and safely as possible, we will need to carry out work at night when there is less traffic. We would like your help to plan for our night work by telling us what option works best for you.

Your feedback is important to us and will help shape how we deliver the new noise wall. To let us know your preference please call or email us by **Friday 20 December 2019**. Our contact details are on the back of this leaflet.

### OPTION 1

We expect to finish our work in about **four months**, weather permitting.

**Working up to five nights a week** between 8pm and 5am, will help us finish our work faster.

### OPTION 2

We expect to finish our work in about **five months**, weather permitting.

**Working up to four nights a week** between 8pm and 5am will mean less night work each week and additional respite for you, but it will take us about a month longer to finish our work.

## Work area



## Additional information about our work

Regardless of which option is favoured, we will always make every effort to minimise noise by ensuring noisy work is completed before midnight and we will turn off machinery and vehicles when not in use.

Our noisy work can include breaking up rock, jack hammering, piling into rock and concrete drilling. Our less noisy work will take place after midnight and can include truck and crane movements, loading trucks with excavated material and lifting noise wall panels into place.

The exact nights we will be working will be finalised closer to construction, and there will be some weeks where we are not carrying out any night work.

The nights we work will depend on our program, weather conditions and permits to work on the road. We will notify you before the start of any night work.

We will also need to carry out work through the day. This work will be carried out between 7am and 6pm Monday to Friday and 8am and 1pm on Saturdays. No work will be carried out on public holidays.

### Next steps

We will include the preferred night work schedule in our Review of Environmental Factors (REF), which is still being finalised. We expect the REF will be on display for your feedback in early 2020.

---

## We thank you for your interest in our work and look forward to hearing from you.


### Contact our team

Thank you for your patience while we complete this important work. Please contact us if you have more questions.

 [rms.nsw.gov.au/nap](https://rms.nsw.gov.au/nap)

 [nap@rms.nsw.gov.au](mailto:nap@rms.nsw.gov.au)

 1800 312 772

 Transport for NSW  
Locked Bag 928, North Sydney  
NSW 2059



131 450

If you need help understanding this information, please contact the Translating and Interpreting Service on 131 450 and ask them to call us on 1800 312 772.

**Privacy** Transport for NSW is subject to the Privacy and Personal Information Protection Act 1998 ("PPIP Act") which requires that we comply with the Information Privacy Principles set out in the PPIP Act. All information in correspondence is collected for the sole purpose of assisting the assessment of this proposal. The information received, including names and addresses of respondents, may be published in subsequent documents unless a clear indication is given in the correspondence that all or part of that information is not to be published. Otherwise Transport for NSW will only disclose your personal information, without your consent, if authorised by the law. Your personal information will be held by Transport for NSW. You have the right to access and correct the information if you believe that it is incorrect.