

## Investigation work on Appin Road, Gilead from Monday 4 April 2022

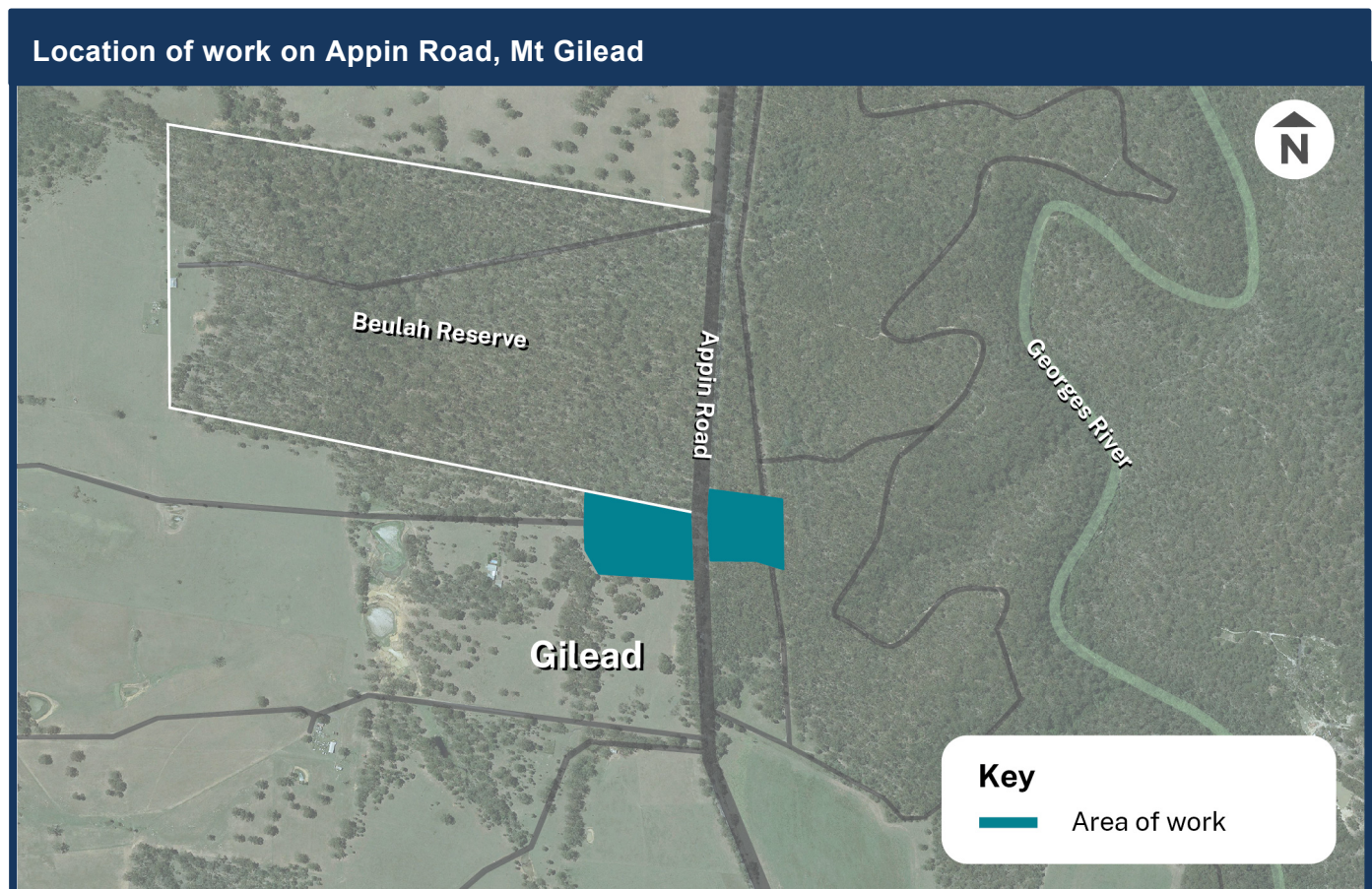
Transport for NSW | April 2022

### What we are doing

Transport for NSW will carry out investigation works at Appin Road near Beulah Reserve as part of the Appin Road Safety Improvements project.

Our work will include surveying to investigate ground conditions and locate underground utilities.

These investigations are carried out to collect information that will help inform future improvements to the intersection. The map below shows the area of the work.



## Our work schedule

Work is scheduled to commence from **Monday 4 April** with expected completion by **Friday 18 April 2022**, weather permitting.

Our work will only occur during the day between 7am and 6pm from Monday to Friday. We will not work on public holidays.

## How will the work affect you?

The investigation works will be carried out on the verges along Appin Road. Access to properties and businesses will be maintained at all times.

## Traffic changes

While we will try to minimise disruption to traffic, temporary traffic changes will be required at times to ensure the work zone is safe.

Partial lane closures and a reduced 40km/h speed limit will be in place.

Please keep to speed limits and follow the direction of traffic controllers and signs.

For the latest traffic updates, you can call 132 701, visit [livetraffic.com](http://livetraffic.com) or download the Live Traffic NSW App.

## Other investigation areas

Investigation work is also planned along the intersection of Appin Road and Brian Road, Appin. Communities near Appin Road and Brian Road will also be notified.

Thank you for your patience during this important work.

## Contact us

If you have any questions or would like more information regarding this work, please contact our project team:



0447 001 762 (work hours)



[appinroadsafety@transport.nsw.gov.au](mailto:appinroadsafety@transport.nsw.gov.au)



[transport.nsw.gov.au](http://transport.nsw.gov.au)



If you need help understanding this information, please contact the Translating and Interpreting Service on **131 450** and ask them to call us on 1800 411 588