

Investigation work on Appin Road from Tuesday 29 November

Transport for NSW | November – December 2022

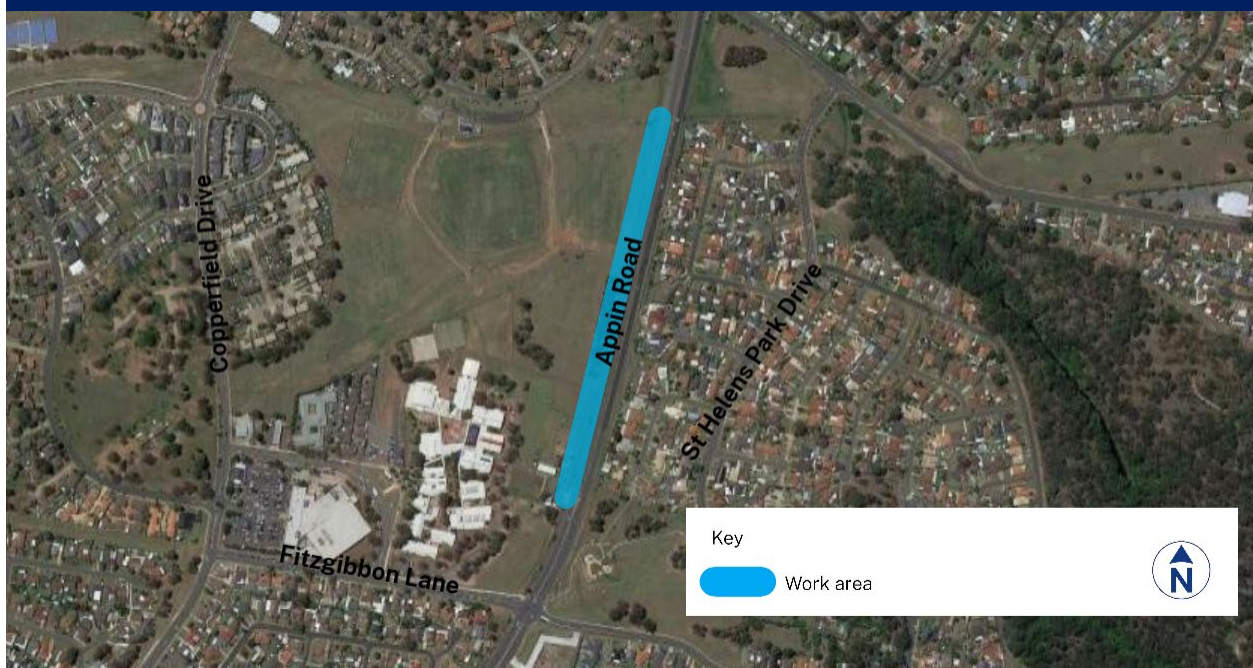
What are we doing

Transport for NSW will carry out investigation works on Appin Road, Rosemeadow as part of the Appin Road and St Johns Intersection upgrade.

Our work will include surveying to investigate ground conditions, locating underground utilities and checking drainage pits.

These investigations are being carried out to collect information that will help inform future improvements to the Appin Road and St Johns intersection. The map below shows the area of the work.

Location of work



Our work schedule

Work is scheduled to commence from **Tuesday 29 November** with expected completion by **Thursday 22 December**, weather permitting.

Work will occur **Monday to Fridays between 7am and 6pm** and **Saturdays between 8am and 3pm**. Night work will also occur **from 8pm to 7am, Sunday to Thursdays**. We will not work on public holidays.

How will the work affect you?

The investigation works will be carried out on the western verge of Appin Rd. These works will generate noise at times; however we will mitigate these impacts through using noise blankets around the equipment and work area, preventing use of tonal reverse beepers, and positioning the equipment away from residents where possible. The works will move progressively along the street so residents close to the worksite will not be impacted across multiple days and/or nights.

Traffic changes

Temporary traffic changes will be required at times to ensure the work zone is safe.

Traffic controllers will be in place to assist pedestrians and vehicles to move safely around the works. Partial lane closures and a reduced 40km/h speed limit will be in place during the work as needed. We will try to minimise disruption to traffic.

Please keep to speed limits and follow the direction of traffic controllers and signs.

For the latest traffic updates, you can call **132 701**, visit **livetraffic.com** or download the **Live Traffic NSW App**.

Contact us

If you have any questions or would like more on the Appin Road and St Johns intersection project, please contact our project team:



1800 684 490 (project info line)



projects@transport.nsw.gov.au



nswroads.work/appinroad



PO Box 973, Parramatta NSW 2124



If you need help understanding this information, please contact the Translating and Interpreting Service on **131 450** and ask them to call us on **1800 344 084**