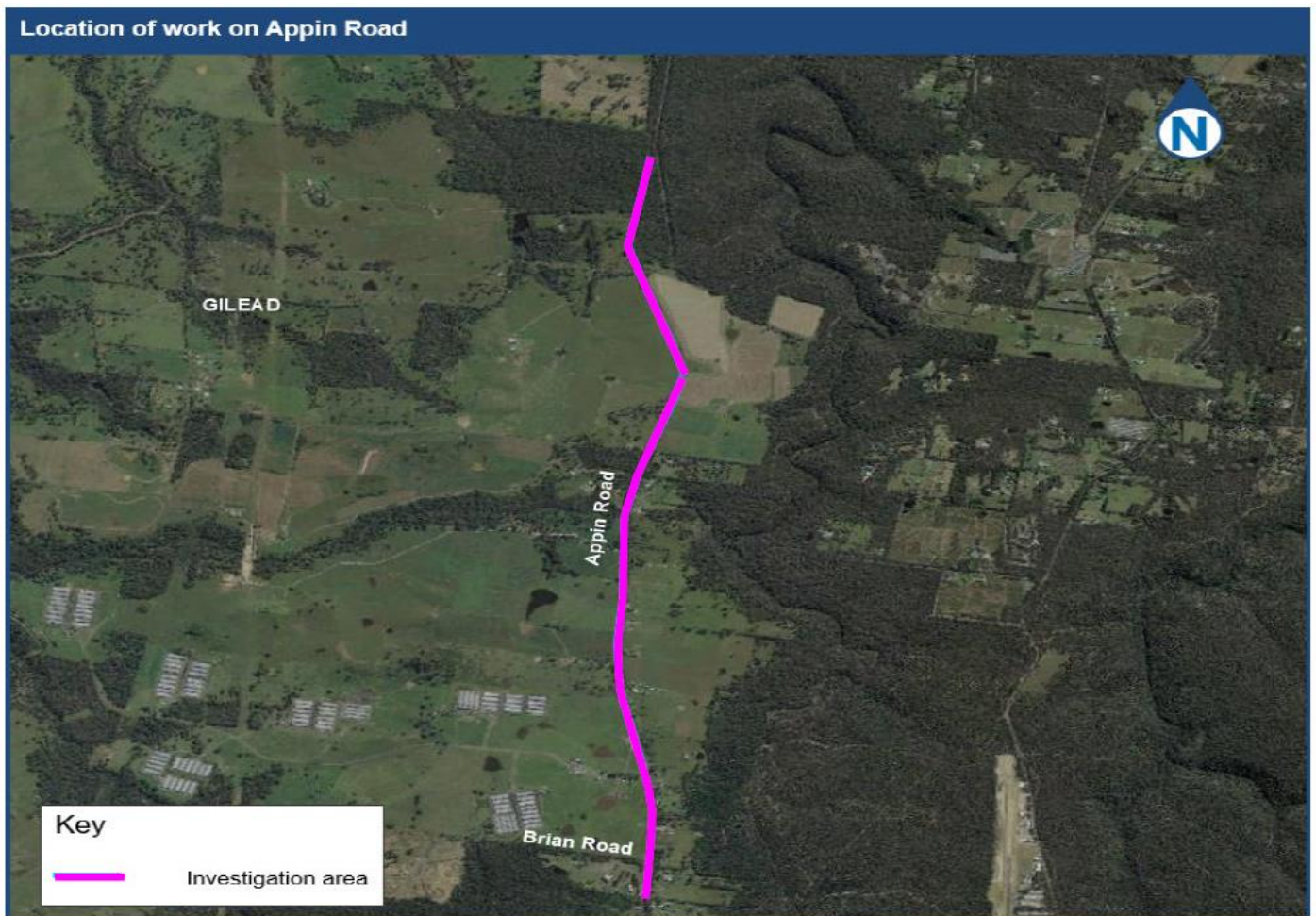


## Investigation work on Appin Road, Mt Gilead from Monday 17 January

The Australian Government is investing in the Appin Road Safety Improvements to improve safety on Appin Road and support affordable housing in the Greater Macarthur Growth Area.



Transport for New South Wales will undertake essential utilities investigation work on Appin Road between Beulah Reserve and south of Brian Road to assist with design of the proposed safety improvements, Brian Road Roundabout Projects.

Our work will include:

- locating underground utilities
- recording field data
- taking photographs.

## Our work schedule

We will be on site for up to **14 day shifts** between **Monday 17 January** and **Thursday 30 June**, weather permitting.

Our work hours will be between **9am** and **3pm** **Monday to Friday** excluding public holidays.

## Contact us

If you have any questions, please contact the project team on 1800 565 941 or [CommunityEngagement@wsp.com](mailto:CommunityEngagement@wsp.com).

To find out more go to:  
<https://www.rms.nsw.gov.au/projects/appin-road-improvements/index.html>

## How will the work affect you?

The investigation works will be carried out on the verges along Appin Road.

Access to properties and businesses will be maintained at all times.

## Traffic changes

There are no changes proposed to the traffic. For the latest traffic updates, please contact 132 701, visit [livetraffic.com](http://livetraffic.com) or download the Live Traffic NSW App.

Thank you for your patience during this work.



### Translating and Interpreting Service

If you need an interpreter, please call the Translating and Interpreting Service (TIS National) on **131 450** and ask them to telephone Transport for NSW on 1800 565 941

#### Arabic

إذا كنت بحاجة إلى مترجم، الرجاء الاتصال بخدمة الترجمة الخطية و الشفهية (TIS National) على الرقم 131 450، و الطلب منهم الاتصال بوكالتكم  
1800 565 941

#### Cantonese

若你需要口譯員，請致電 **131 450** 聯絡翻譯和口譯服務署 (TIS National)，要求他們致電1800 565 941聯絡 Transport for NSW。

#### Mandarin

如果你需要口译员，请致电 **131 450** 联系翻译和口译服务署 (TIS National)，要求他们致电1800 565 941联系 Transport for NSW。

#### Greek

Αν χρειάζεστε διερμηνέα, παρακαλείσθε να τηλεφωνήσετε στην Υπηρεσία Μετάφρασης και Διερμηνείας (Εθνική Υπηρεσία TIS) στο **131 450** και ζητήστε να τηλεφωνήσουν Transport for NSW στο 1800 565 941

#### Italian

Se desiderate l'assistenza di un interprete, prego telefonare al Servizio Interpreti e Traduttori (TIS National) al **131 450** chiedendo di contattare Transport for NSW al 1800 565 941

#### Korean

동역사가 필요하시면 번역동역서비스 (TIS National) 에 **131 450** 으로 연락하여 이들에게 1800 565 941번으로 Transport for NSW 에 전화하도록 요청하십시오.

#### Vietnamese

Nếu cần thông ngôn viên, xin quý vị gọi cho Dịch Vụ Thông Phiên Dịch (TIS Toàn Quốc) qua số **131 450** và nhờ họ gọi cho Transport for NSW qua số 1800 565 941