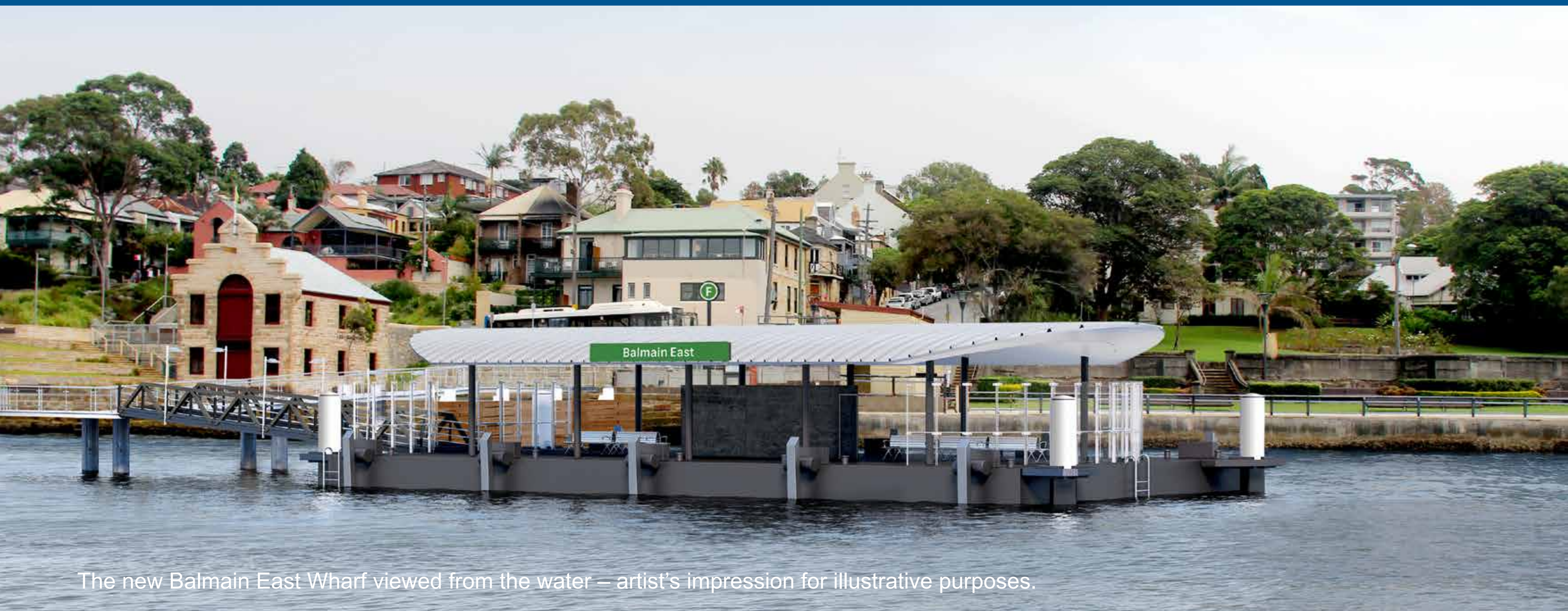


Balmain East Wharf reopens

The new Balmain East Wharf will open to customers on **Thursday 18 June 2015**



The new Balmain East Wharf viewed from the water – artist's impression for illustrative purposes.

F4 Darling Harbour ferry services and evening F3 Parramatta River ferry services will operate from the upgraded wharf from **Thursday 18 June**.

- The first F4 Darling Harbour service departs Balmain East Wharf at 6.23am
- The first F3 evening service to Sydney Olympic Park departs Balmain East Wharf at 7.45pm.

Services will operate to the scheduled timetable which will be updated at transportnsw.info on 18 June. Customers can also call Transport Info on 131 500 for timetable and service information.

The wharf has been upgraded as part of the NSW Government's Transport Access Program – an initiative to deliver modern, safe and accessible transport infrastructure. The new Balmain East Wharf will improve safety, accessibility and comfort for customers, make boarding and disembarking quicker and easier and have future capacity for two ferries to berth at the same time.

Thank you for your patience during construction of the new wharf.

For further information please call **1800 770 973** or email WharfUpgradeProgram@rms.nsw.gov.au

Plan your trip by calling **Transport Info** on **131500** or visit transportnsw.info to use the trip planner