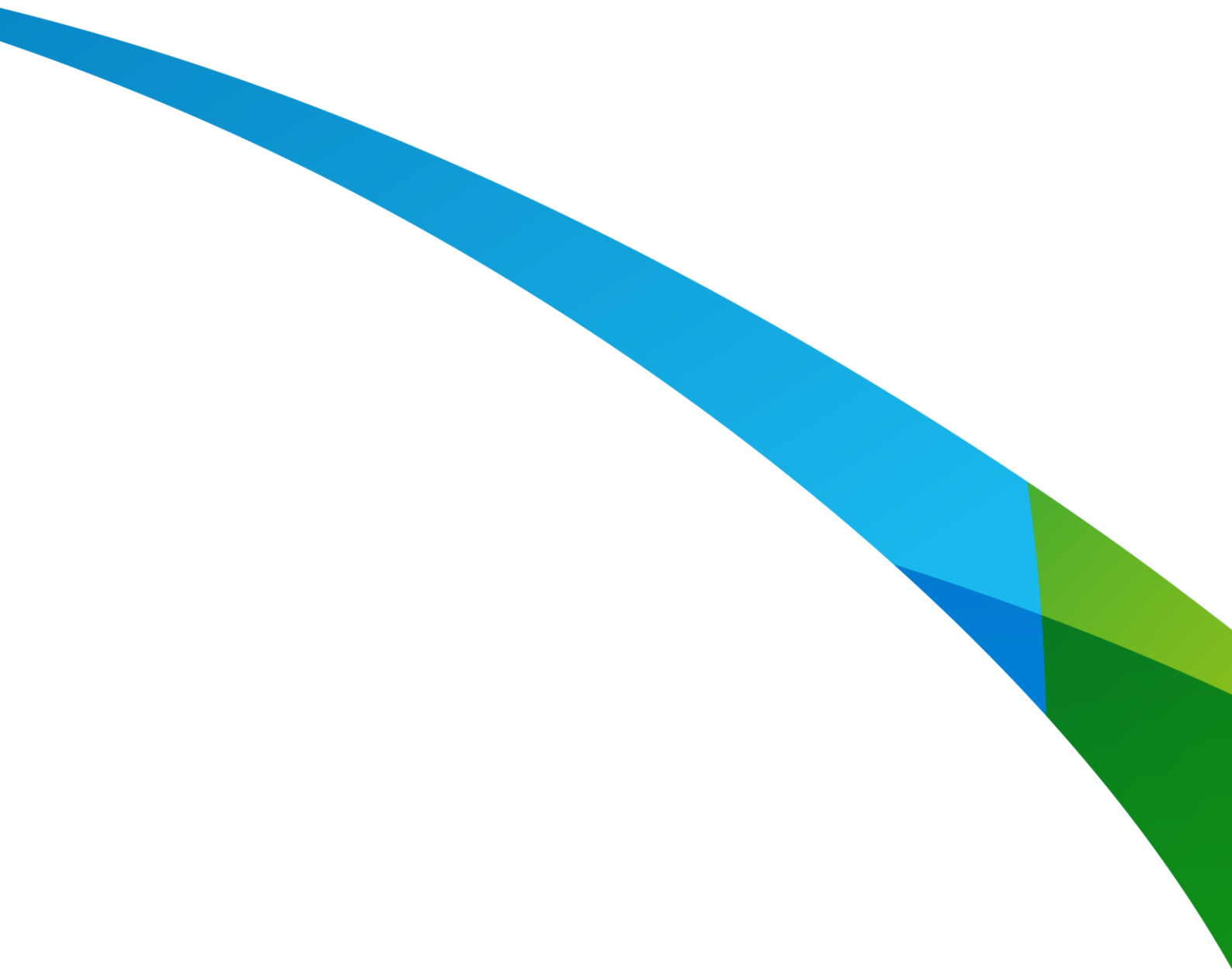


Beecroft pedestrian bridge

Community Consultation Report

September 2015



THIS PAGE LEFT INTENTIONALLY BLANK

Executive summary

This Community Consultation Report provides a summary of the second round of community consultation carried out by Roads and Maritime Services to refine the proposed pedestrian bridge over Beecroft Road near Beecroft Public School. The proposed bridge would:

- Provide a safe crossing for Beecroft Public School students, parents and carers and other pedestrians
- Provide better pedestrian connections between properties on the western side of Beecroft Road and the station, community centre and Beecroft Village Green
- Provide a safe and accessible crossing for people with limited mobility and prams by including lifts in the bridge design.

Roads and Maritime invited the community and stakeholders to provide feedback on the proposal from February to April 2015. Comments were received from 59 people and organisations. We considered the feedback and decided to continue developing the proposal. The community consultation report, which summarises the feedback and our responses is available at rms.nsw.gov.au/projects by searching 'Beecroft pedestrian bridge'

After refinement of the concept design for the project, Roads and Maritime invited further feedback on the specific matters of tree removal, bridge colour and work hours in July and August 2015. This consultation report summarises the feedback received and our response.

We received 19 submissions from 17 individuals with 33 separate matters raised in this round of consultation. Key matters raised by the community included visual, environmental and construction impacts of the bridge and the project need.

We have considered the feedback received and will proceed with the pedestrian bridge over Beecroft Road near Beecroft Public School.

We will plant trees in the Village Green in response to the community feedback about tree removal.

Next steps

We are preparing a Review of Environmental Factors to assess the environmental impacts of the proposal and outline measures to reduce these impacts. This will be finalised in the coming months and will be made available to view on the project web page.

Construction work to build the pedestrian bridge is expected to start in late 2015. Community members near the project area will be notified before construction work starts and we will continue to keep them updated as the project progresses.

Contents

Executive summary	3
Next steps.....	3
Contents.....	4
Introduction	5
Background.....	5
The proposal.....	5
Consultation approach.....	6
Consultation objectives	6
How consultation was done	6
Consultation summary.....	6
Overview.....	6
Feedback summary and Roads and Maritime's response	7
Decision	20
Next steps	20
Appendix A – Project update July 2015	21
Appendix B – Distribution Area	23

Introduction

Background

Roads and Maritime Services is proposing to build a pedestrian bridge over Beecroft Road near Beecroft Public School about 50 metres south of the Copeland Road intersection to provide safe access for school students and pedestrians.

The proposal is part of the NSW Government's Active Transport Pedestrian Bridges Program. It was announced by Transport for NSW in [*Sydney's Walking Future \(2013\)*](#) to provide safe access to Beecroft Public School, town centre and train station.

The proposal aims to:

- Provide a safe crossing for Beecroft Public School students, parents and carers and other pedestrians
- Provide better pedestrian connections between properties on the western side of Beecroft Road and the station, community centre and Beecroft Village Green
- Provide a safer accessible crossing for people with limited mobility and prams by including lifts in the bridge design.

Roads and Maritime invited the community and stakeholders to provide feedback on the proposal from February to April 2015. Comments were received from 59 people and organisations. We considered the feedback and decided to continue developing the proposal.

After refinement of the concept design for the project, Roads and Maritime invited further feedback on the specific matters of tree removal, bridge colour and work hours in July and August 2015. This consultation report summarises the feedback received and our response.

The proposal

The proposed bridge would be located on Beecroft Road about 50 metres south of the Copeland Road intersection. This location was chosen to limit the impact on the Beecroft Community Centre and mature native trees in the Beecroft Village Green and in the Beecroft Public School grounds.

The proposed pedestrian bridge would be about 9.2 metres high and allow a clearance for heavy vehicles up to about 5.5 metres.

Key features of the proposal include:

- Direct access to Beecroft Public School from the pedestrian bridge
- Removal of the existing pedestrian crossing on the southern side of the intersection to improve traffic efficiency and encourage pedestrians to use the bridge
- A new pedestrian fence on the eastern side of Beecroft Road to encourage the use of the pedestrian bridge and further improve pedestrian safety.

We would retain the pedestrian crossing on the northern side of the intersection for pedestrians to use in the event the lifts are broken.

Consultation approach

Consultation objectives

We consulted with the community on the proposal to:

- Seek comment, feedback, ideas and suggestions for Roads and Maritime to consider when developing the proposal including consultation outcomes into the environmental impact assessment known as Review of Environmental Factors
- Build a database of interested community members who Roads and Maritime could continue to engage during the development of the proposal.

How consultation was done

Consultation for the proposed tree removal, bridge colour and work hours was carried out from Monday 20 July to Monday 3 August 2015. Community members were encouraged to provide their feedback via mail, email or phone contact with the project team.

Our key consultation tools for this consultation period included:

Stakeholder meetings	Meetings were held with Beecroft Public School, Hornsby Shire Council staff and other stakeholders.
Project update July 2015 Appendix A	Approximately 1600 project updates were delivered to residents. Appendix B shows the distribution area. Electronic copies were emailed to emergency services, schools and universities, large businesses, religious centres and community groups in the local area.
Web page	Up-to-date information about the project is made available at rms.nsw.gov.au by searching 'Beecroft pedestrian bridge'.

Consultation summary

Overview

We received 19 submissions from 17 individuals, with 33 separate matters raised. These related to:

- Consultation
- Environment concerns
- Visual impacts
- Heritage concerns
- Location
- The bridge design
- Access
- Project
- Matters that were out of the scope of the project.

Feedback summary and Roads and Maritime's response

Category	Number of comments	Matter raised	Roads and Maritime response
Environment	16 comments	<p>Loss of trees.</p> <p>Loss of habitat for local wildlife as a result of tree removal.</p>	<p>Roads and Maritime is committed to minimising the impact of this proposal on the environment and the community. The proposal location was chosen to minimise the impact on mature native trees in the Beecroft Village Green and Beecroft Public School grounds.</p> <p>The concept design has been developed to minimise the impact on mature trees as much as possible, however we would need to remove some vegetation including trees, bushes and shrubs from Beecroft Village Green and Beecroft Public School to allow us to build the bridge.</p> <p>We would implement measures to reduce the environmental impacts of this work, including having an ecologist on site when trees are removed to manage any wildlife in the area.</p> <p>Additionally we would plant some semi-mature trees in the Village Green to offset the trees that would need to be removed in response to community feedback. We will finalise the exact location and species in consultation with our landscape designers and Council.</p> <p>Roads and Maritime is preparing a Review of Environmental Factors to assess the environmental impacts of the proposal and outline measures to reduce these impacts. This will be finalised in the coming months and will be made available to view on the project web page.</p>

Category	Number of comments	Matter raised	Roads and Maritime response
Visual impacts	Six comments	<p>The bridge colours should be chosen to blend into the local environment.</p> <p>The colours chosen are standard colours used for similar bridges around Sydney.</p> <p>Consider the use of green colours similar to the trees to help blend the bridge in with the local landscape.</p>	<p>Roads and Maritime has consulted with Hornsby Shire Council in selecting the proposed colour scheme for the bridge over Beecroft Road.</p> <p>Our urban designers believe that the use of green would make the bridge stand out more than the proposed colours, which would have a greater visual impact on the local community.</p> <p>The colours that have been selected would help to blend the bridge into the surrounding tree shadows in the Village Green.</p> <p>The use of two different colours on the lift shafts helps to break up the visual impact of the structure.</p>
		<p>The amenity of the local area will be negatively impacted if advertising is allowed on the bridge.</p>	<p>We would not include advertising as part of this proposal as it is not considered in keeping with the character of the local area.</p>

Category	Number of comments	Matter raised	Roads and Maritime response
Heritage	Six comments	The design is not in keeping with the heritage look of the area.	<p>The concept for this proposal is based on Roads and Maritime's design standard for pedestrian bridges. The design standard has been developed through a collaboration of urban designers and engineers to be used in built up areas.</p> <p>Roads and Maritime has consulted with Hornsby Shire Council in selecting the proposed colour scheme for the bridge over Beecroft Road. The colours that have been selected would help to blend the bridge into the surrounding tree shadows in the Village Green.</p> <p>We are preparing a Review of Environmental Factors to assess the environmental impacts of the proposal, including heritage impacts. This will be finalised in the coming months and will be made available to view on the project web page.</p>
Access	Three comments	The lifts will require maintenance.	Roads and Maritime has a strict protocol for lifts including regular cleaning and routine maintenance, call outs for breakdowns and emergency response for lift entrapment. A 24-hour phone number for the public to report issues with the lifts such as offensive graffiti or breakdowns would be provided outside the lift door and inside the lift.
		The pedestrian crossing at the southern side of the Beecroft Road and Copeland Road intersection should not be removed.	<p>Use of the pedestrian bridge would be encouraged as the safest way to cross Beecroft Road and therefore the pedestrian crossing on the southern side of Beecroft Road and Copeland Road intersection would be removed. Removal of this pedestrian crossing would also slightly improve the traffic flow by limiting the amount of time vehicles spend waiting for pedestrians to cross the road.</p> <p>The pedestrian crossing on the northern side of Beecroft Road and Copeland Road intersection would be retained in the event the lifts are out of order.</p>

Category	Number of comments	Matter raised	Roads and Maritime response
Location	Four comments	The bridge location is not convenient for the majority of pedestrians crossing at the intersection of Beecroft Road and Copeland Road.	<p>The proposed pedestrian bridge has been designed to provide a safe and efficient crossing for Beecroft Public School students. While the pedestrian movements of the community have been considered in the development of the proposal, the key priority is to ensure a safe crossing for students.</p> <p>The proposal has been developed to minimise the visual impact on the Beecroft Community Centre, mature trees in the Beecroft Village Green and Beecroft Public School grounds and parking within the Beecroft Public School. The proposed location provides good connections for the community close to the intersection.</p>
		A pedestrian bridge located north of the proposed location, such as at the intersection of Hannah Street and Beecroft Road, would be more beneficial.	<p>A pedestrian bridge would not be feasible at the intersection of Beecroft Road and Hannah Street, due to the limited space available, which would require acquisition of private property.</p> <p>The proposed pedestrian bridge has been designed to provide a safe and efficient crossing for Beecroft Public School students. While the pedestrian movements of the community have been considered in the development of the proposal, the key priority is to ensure a safe crossing for students.</p>
Design	Nine comments	The bridge design should include ramps.	The proposal aims to reduce the environmental impact to the area. The stairwell/lift design has been chosen as it reduces the bridge footprint, project cost and visual impact of the bridge. A ramp design would produce a much larger footprint resulting in greater environmental impacts, including vegetation removal from the Beecroft Village Green and Beecroft Public School grounds. On this basis a ramp design would not be suitable for this proposal.

Category	Number of comments	Matter raised	Roads and Maritime response
		The bridge should be built diagonally from the fire station to the school.	<p>Building the bridge diagonally across Beecroft Road would increase the cost of the project significantly, due to:</p> <ul style="list-style-type: none"> • The need for private property acquisition • The need for substantial utility adjustments • A longer bridge span if built at an angle. <p>It would also result in loss of parking at the Beecroft Public School, which would negatively impact the school as parking is already limited.</p>
		There is limited need for the expensive lifts.	<p>Roads and Maritime has provided lifts to provide access for people with prams and limited mobility.</p> <p>The proposal aims to reduce the environmental impact to the area. The stairwell/lift design has been chosen as it reduces the bridge footprint, project cost and visual impact of the bridge. A ramp design would produce a much larger footprint resulting in greater environmental impacts, including vegetation removal from the Beecroft Village Green and Beecroft Public School grounds.</p>
		The lift shafts are too bulky.	The lift shafts have been designed to withstand impact from vehicle crashes. To meet safety requirements they also need to be large enough for wheelchair, pram, bicycles and stretchers.
		Consideration should be given to green wall plantings on the bridge to make it less visible.	Green wall plantings on the bridge or lift shafts would require frequent and expensive maintenance and is not being considered at this time.

Category	Number of comments	Matter raised	Roads and Maritime response
Project	Nine comments	The bridge is not needed and will not be used by the community.	<p>Between July 2003 and June 2014 there were four incidents involving pedestrians at the intersection of Hannah Street and Beecroft Road, including one fatality. The pedestrian bridge improves the safety of pedestrians crossing Beecroft Road.</p> <p>The proposed pedestrian bridge has been designed to provide a safe and efficient crossing for Beecroft Public School students. While the pedestrian movements of the community have been considered in the development of the proposal, the key priority is to ensure a safe crossing for students.</p> <p>In addition to providing a safe crossing for school students, the proposed location was chosen keeping in mind all project constraints. These include the acquisition of private properties, visual impacts on the community centre, mature trees in the Beecroft Village Green and Beecroft Public School grounds, parking within the Beecroft Public School, utility impacts and construction cost. The proposed location provides good connections for the community close to the intersection.</p>

Category	Number of comments	Matter raised	Roads and Maritime response
		A project timeline should be provided of how this project was initiated and for future approvals so that the community has an understanding of when and how it will be given an opportunity to comment.	<p>The proposed pedestrian bridge was announced by Transport for NSW in Sydney's Walking Future (2013) to provide safe access to Beecroft Public School, town centre and station. Roads and Maritime is delivering the proposal on behalf of the NSW Government.</p> <p>Roads and Maritime started development and planning for the proposed pedestrian bridge in early 2014. The concept design was finalised in January 2015 and we invited the community and stakeholders to provide feedback on the proposal in February 2015.</p> <p>After refinement of the concept design for the project, Roads and Maritime invited feedback on tree removal, bridge colour and work hours from Monday 20 July to Monday 3 August 2015.</p> <p>The next step is to finalise the Review of Environmental Factors to assess the environmental impacts of the proposal and outline measures to reduce these impacts. This will be finalised in the coming months and will be made available to view on the project web page.</p> <p>Construction work to build the pedestrian bridge is expected to start in late 2015.</p>
		Why is a pedestrian bridge proposed for this school but no other local schools?	<p>The proposed pedestrian bridge was announced by Transport for NSW in Sydney's Walking Future (2013) to provide safe access to Beecroft Public School, town centre and station. The NSW Government is funding this proposal as part of its Active Transport Pedestrian Bridges Program.</p>

Category	Number of comments	Matter raised	Roads and Maritime response
		<p>The proposed pedestrian bridge seems like a use of funds that could be better spent on other matters.</p> <p>What is the cost benefit of the proposed pedestrian bridge to the community?</p>	<p>The proposed pedestrian bridge was announced by Transport for NSW in Sydney's Walking Future (2013) to provide safe access to Beecroft Public School, town centre and station.</p> <p>The project aims to improve safety for school students and pedestrians crossing Beecroft Road. The pedestrian bridge would provide a safe and efficient crossing during peak traffic times and slightly improve traffic flow by reducing the time vehicles spend waiting at the intersection of Beecroft Road and Copeland Road.</p> <p>An economic analysis is not needed due to the safety benefits the bridge provides pedestrians.</p>
		<p>More information such as crash data, the environmental assessment and expected construction timeframes needs to be provided to the community so informed feedback can be provided.</p>	<p>Between July 2003 and June 2014 there were four incidents involving pedestrians at the intersection of Hannah Street and Beecroft Road, including one fatality. This is about 200 metres from the location of the proposed pedestrian bridge.</p> <p>Roads and Maritime is preparing a Review of Environmental Factors to assess the environmental impacts of the proposal and outline measures to reduce these impacts. This will be finalised in the coming months and will be made available to view on the project web page.</p> <p>Construction is expected to take about nine months to complete, weather permitting. Work is expected to start in late 2015.</p>

Category	Number of comments	Matter raised	Roads and Maritime response
		No evidence has been presented showing improvements to traffic flow at the intersection.	<p>The proposal aims to improve safety for school students and pedestrians crossing Beecroft Road near Beecroft Public School.</p> <p>Traffic modelling of the Beecroft Road and Copeland Road intersection shows the removal of the southern pedestrian crossing would slightly improve traffic flow during morning peak periods by reducing the time vehicles spend waiting for pedestrians to cross Beecroft Road.</p>
		Evidence should be provided that this is part of a holistic approach as per the Roads and Maritime Pedestrian Bridge Eligibility and Prioritisation Assessment.	<p>The proposed pedestrian bridge was announced by Transport for NSW in Sydney's Walking Future (2013) to provide safe access to Beecroft Public School, town centre and station. The project is funded by the NSW Government's Active Transport Pedestrian Bridges Program.</p> <p>As the proposal is funded under the NSW Government's Active Transport Pedestrian Bridge Program it was not reviewed as part of Roads and Maritime's Pedestrian Bridge Eligibility and Prioritisation Assessment. This assessment is used to prioritise pedestrian bridge proposals as part of Roads and Maritime's Pedestrian Bridge Program.</p> <p>The assessment uses several criteria to prioritise potential pedestrian bridge locations including existing pedestrian infrastructure, pedestrian movements, safety, traffic counts and construction feasibility. While the Beecroft pedestrian bridge proposal was not subject to review under the assessment, these factors have been taken into consideration during the development of this proposal.</p> <p>More information about the assessment is available at www.rms.nsw.gov.au by searching 'pedestrian bridge eligibility and prioritisation assessment'.</p>

Category	Number of comments	Matter raised	Roads and Maritime response
		The bridge seems to be designed to facilitate traffic flow rather than for pedestrian safety.	The proposed pedestrian bridge has been designed to provide a safe and efficient crossing for Beecroft Public School students and other pedestrians. The pedestrian bridge improves the safety of pedestrians crossing Beecroft Road.
Construction	Nine comments	<p>There are many other projects happening in the area and the community has construction fatigue</p> <p>The following will need to be managed:</p> <ul style="list-style-type: none"> • Timing • Increased traffic during work • Loss of amenity during work • Parking • Location of the site compound • Security. 	<p>We understand that there are a number of infrastructure projects happening in the area and are committed to minimising the impact of this proposal on the environment and the community. Construction activities would be coordinated with other infrastructure and development activities occurring in the area to minimise disruption to the local community.</p> <p>During construction, access through the Village Green would be required for small vehicles. We are working with Hornsby Shire Council staff to determine the safest way to enter and exit the Village Green, while minimising disruption to existing activities.</p> <p>Heavy vehicle movements, including machinery deliveries and concrete pours, would be carried out from Beecroft Road. Some lane closures would be required for this work. Lane closures and other traffic changes would be subject to approval by the Transport Management Centre to ensure that traffic impacts are minimised.</p> <p>Traffic control would be used during construction to allow safe access around the work site for vehicles and pedestrians. Existing footpaths along Beecroft Road and within the Village Green would be maintained.</p> <p>Construction contractors would be required to have detailed plans in place before work starts to ensure that impacts to pedestrians, the environment and traffic are minimised.</p>

Category	Number of comments	Matter raised	Roads and Maritime response
		Consideration of community events should be given during construction so that they are not impacted.	Roads and Maritime will work with Hornsby Shire Council to maintain areas within the park for scheduled community events.
		<p>Respite should be given for night work and community members should be provided with advanced notice.</p> <p>Compensation should be given for the inconvenience caused by noisy night work.</p>	<p>Community members near the work site will be notified seven days before night work starts. Roads and Maritime would not compensate residents for potential disruption caused by noisy work, however we would make every effort to minimise noise by:</p> <ul style="list-style-type: none"> • Turning off the machinery when not in use • Arranging the noisiest activities earlier in the evening • Placing equipment such as generators as far away as possible from residents. <p>We would complete the work as quickly as possible to minimise any disruptions.</p>
Out of scope	Eight comments	Accessibility upgrades at Beecroft station, such as lifts like those for the proposed bridge, would be beneficial to people with limited mobility.	We have referred this request to Transport for NSW for consideration.
		Money should be spent on improved parking or a school drop off point.	The aim of this proposal is to provide a safe crossing of Beecroft Road for school students and pedestrians. We have referred this request to Beecroft Public School for consideration.

Category	Number of comments	Matter raised	Roads and Maritime response
		Other intersections such as Carlingford Road and Rawson Street or Pennant Hills Road intersections are without pedestrian bridges.	The aim of this proposal is to provide a safe crossing of Beecroft Road for school students and pedestrians. We will consider improvements to these intersections in planning for future work in the area.
Consultation	Nine comments	Consultation for this project has not been genuine.	<p>We used a number of methods to inform the community and stakeholders about the proposal:</p> <ul style="list-style-type: none"> • We met with key stakeholders including Beecroft Public School, Beecroft-Cheltenham Civic Trust and Hornsby Shire Council • We distributed four project updates to about 1600 residents and businesses in the area (see Appendix B for distribution map) • We sent email updates to stakeholders • Information has been made available on the project web page on Roads and Maritime's website. <p>Feedback from stakeholders and community members has been considered through the development of the proposal.</p>
		Will usage figures for the first year be published?	Roads and Maritime would not count pedestrian traffic on the bridge. Beecroft Public School would promote the use of the bridge as the safest option for pedestrians crossing Beecroft Road. Direct access into the school would also encourage people to use the bridge.

Category	Number of comments	Matter raised	Roads and Maritime response
		No evidence of community support has been provided.	<p>In February and March 2015 we invited feedback on the proposal. We received feedback from 59 people and organisations raising 37 different matters.</p> <p>Comments from 35 people were supportive of the proposal. Overall people supported the proposal, but suggested further improvements, which we have considered in developing the proposal.</p>
		It is a conflict of interest for the party engaged to build the bridge to carry out consultation.	<p>We include community consultation as a requirement for the design, environmental assessment and construction of all our contracts. Contractors work closely with Roads and Maritime to determine the appropriate consultation program for a project.</p> <p>Additionally, we use information gathered during studies and consultation to make the final decision on whether or not a project should proceed in accordance with legislative requirements.</p>
		The image of the bridge provided in the project update is misleading as it shows the crossing on the southern side of Beecroft Road still in place.	The southern pedestrian crossing at the Beecroft Road and Copeland Road intersection would be removed as part of the proposal. This was shown on the project map in the February 2015 community update.
		A design competition with the local school should be considered to select the bridge colour scheme.	A key matter raised by community members during consultation is that the colour scheme should be in keeping with the heritage character of the suburb. Due to community sensitivities relating to heritage in the local area, we decided that the final decision for the bridge colour scheme would be made in consultation with Hornsby Shire Council.

Decision

We have considered the feedback received and will proceed with the pedestrian bridge over Beecroft Road near Beecroft Public School.

In response to the feedback about tree removal, we will plant some semi-mature trees in the Village Green to offset the trees that will need to be removed. We will finalise the exact location and species in consultation with our landscape designers and Hornsby Shire Council.

Next steps

We are preparing a Review of Environmental Factors to assess the environmental impacts of the proposal and outline measures to reduce these impacts. This will be finalised in the coming months and will be made available to view on the project web page.

Construction work to build the pedestrian bridge is expected to start in late 2015. Community members near the project area will be notified before construction work starts and we will continue to keep them updated as the project progresses.

Appendix A – Project update July 2015



Proposed pedestrian bridge on Beecroft Road, Beecroft

July 2015

After refinement of the concept design for this project, Roads and Maritime Services is now seeking feedback on tree removal, bridge colour and work hours by **Monday 3 August 2015**. The NSW Government is funding this proposal.

Roads and Maritime is proposing to build a pedestrian bridge on Beecroft Road near Beecroft Public School about 50 metres south of the Copeland Road intersection to provide safe access for school students and pedestrians. This project is part of the Active Transport Pedestrian Bridges Program.

Community involvement

We invited the community and stakeholders to provide feedback on the proposal between February and April 2015.

A consultation report summarising the comments received and our responses was prepared and is available on our website at rms.nsw.gov.au by searching 'Beecroft pedestrian bridge'. We would like to thank everyone who took the time to review the proposal and provide feedback.

We have refined the design and are seeking feedback on the proposed removal of some trees, the colour of the bridge and work hours.



Project benefits

The key benefits to the community include:

- Providing a safe crossing for Beecroft Public School students, parents and carers and other pedestrians
- Providing better pedestrian connections between properties on the western side of Beecroft Road and the station, Community Centre and Beecroft Village Green
- Providing a safer accessible crossing for people with limited mobility and prams by including lifts in the bridge design.

Tree removal

The concept design for the proposed Beecroft pedestrian bridge was developed to minimise the impact to mature trees as much as possible. Since we last updated the community we have identified trees that would need to be removed as part of this proposal:

- Up to six planted native trees in Beecroft Village Green
- Up to ten planted native trees in the Beecroft Public School grounds
- Up to three planted exotic trees in the Beecroft Public School grounds.

A Red Stringybark tree in Beecroft Village Green would also need to be trimmed to allow for construction vehicle access.

We are preparing an environmental impact assessment (called a Review of Environmental Factors) and this will include information about the removal of vegetation.

Community feedback on the proposed tree removal will help inform the Review of Environmental Factors.

Roads and Maritime is committed to minimising the environmental impacts of this project and will have an ecologist on site when trees are removed or trimmed to help ensure the safety of wildlife in the area.

We have provided maps to help better explain the location of the trees that we are proposing to remove.



Proposed tree removal



Looking south on Beecroft Road

Bridge colour scheme

This proposal is based on Roads and Maritime's pedestrian bridge design standard for built up areas. The standard design can be customised through the use of colour on the lift shafts, arch and roof structure so it fits with the character of the local area.

Roads and Maritime has consulted with Hornsby Shire Council in selecting the proposed colour scheme for the bridge over Beecroft Road.

We have provided an artist's impression to help better explain the design.

Work hours

In order to minimise long term impacts on residents and road users, we propose to carry out intermittent night work in addition to day time work for about **40 to 50 shifts** from **November 2015 to September 2016** between **8pm and 5am**, excluding **Saturdays and public holidays**, weather permitting.

Noisy work would only take place between **8pm and 11pm** with less noisy construction work between **11pm and 5am**.

We expect a maximum of **30 shifts** across the duration of work where noisier activities would be carried out.

The information below better explains the types of equipment and activities that would be used. Residents would be notified of night work seven days in advance.

Noisier construction activities and equipment

- Saw cutting
- Jackhammering
- Breaking up concrete kerbing
- Unloading steel reinforcements

Less noisy construction activities and equipment

- Truck movements
- Loading excavated material and spreading new material
- Laying new concrete kerbing
- Lifting the bridge structure into place
- Concrete placement and finishing work
- Installation of the pedestrian lift
- Installation of pedestrian fencing
- Utility relocations

What happens next?

Comments received will be considered in decision making to finalise the design.

The next step for the project will be to prepare a consultation report summarising the matters raised during consultation and a response to comments.

The consultation report and Review of Environmental Factors will be made available to view on Roads and Maritime's website later this year.

We will continue to keep the community updated as the project progresses.

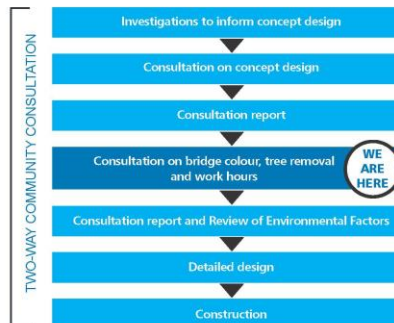
Have your say

We are seeking feedback on the proposed tree removal, colour scheme and work hours by **Monday 3 August 2015**.

Please send your comments to:

Email: enquiries_nsw@downermouchel.com

Mail: DownerMouchel, ATT Beecroft Pedestrian Bridge, PO Box 646, North Ryde NSW 2113



Contact Us

For more information, please contact the project team on:

Phone: 1800 332 660 (during business hours)

Email: enquiries_nsw@downermouchel.com

Mail: DownerMouchel, ATT Beecroft Pedestrian Bridge, PO Box 646, North Ryde NSW 2113

More information is also available at rms.nsw.gov.au by searching 'Beecroft Pedestrian Bridge'.



Translating and Interpreting Service

If you need an interpreter, please call TIS National on **131 450** and ask them to call DownerMouchel on **1800 332 660**.

Arabic

إذا كنتم بحاجة إلى مترجم، افرجاء الاتصال بخدمة الترجمة الحظوية والتفهيبة (TIS National) على الرقم 1800 332 660 و الطلب منهم الاتصال بوكالتكم DownerMouchel على الرقم 1800 332 660

Cantonese

若你需要口譯員，請致電 131 450 聯絡翻譯和口譯服務署 (TIS National)，要求他們 致電 1800 332 660 聯絡 DownerMouchel。

Mandarin

如果你需要口譯員，請致電 131 450 联系翻译和口译服务署 (TIS National)，要求他们 致电 1800 332 660 联系 DownerMouchel。

Greek

Αν χρειάζεστε διερμηνεία, παρακαλείσθε να τηλεφωνήσετε στην Υπηρεσία Μετάφρασης και Διερμηνείας (Εθνική Υπηρεσία TIS) στο 131 450 και ζητήστε να τηλεφωνήσουν DownerMouchel στο 1800 332 660.

Russian

Если вам нужен переводчик, то позвоните в Службу письменного и устного перевода (TIS National) по номеру 131 450 и скажите переводчику, что вам нужно позвонить в DownerMouchel по номеру 1800 332 660.

Korean

통역사가 필요하시면 번역통역서비스 (TIS National) 에 131 450 으로 연락하여 이들에게 1800 332 660 번으로 DownerMouchel 에 전화하도록 요청하십시오.

Vietnamese

Nếu cần thông ngôn viên, xin quý vị gọi cho Dịch Vụ Thông Phiên Dịch (TIS Toàn Quốc) qua số 131 450 và nhờ họ gọi cho DownerMouchel qua số 1800 332 660.

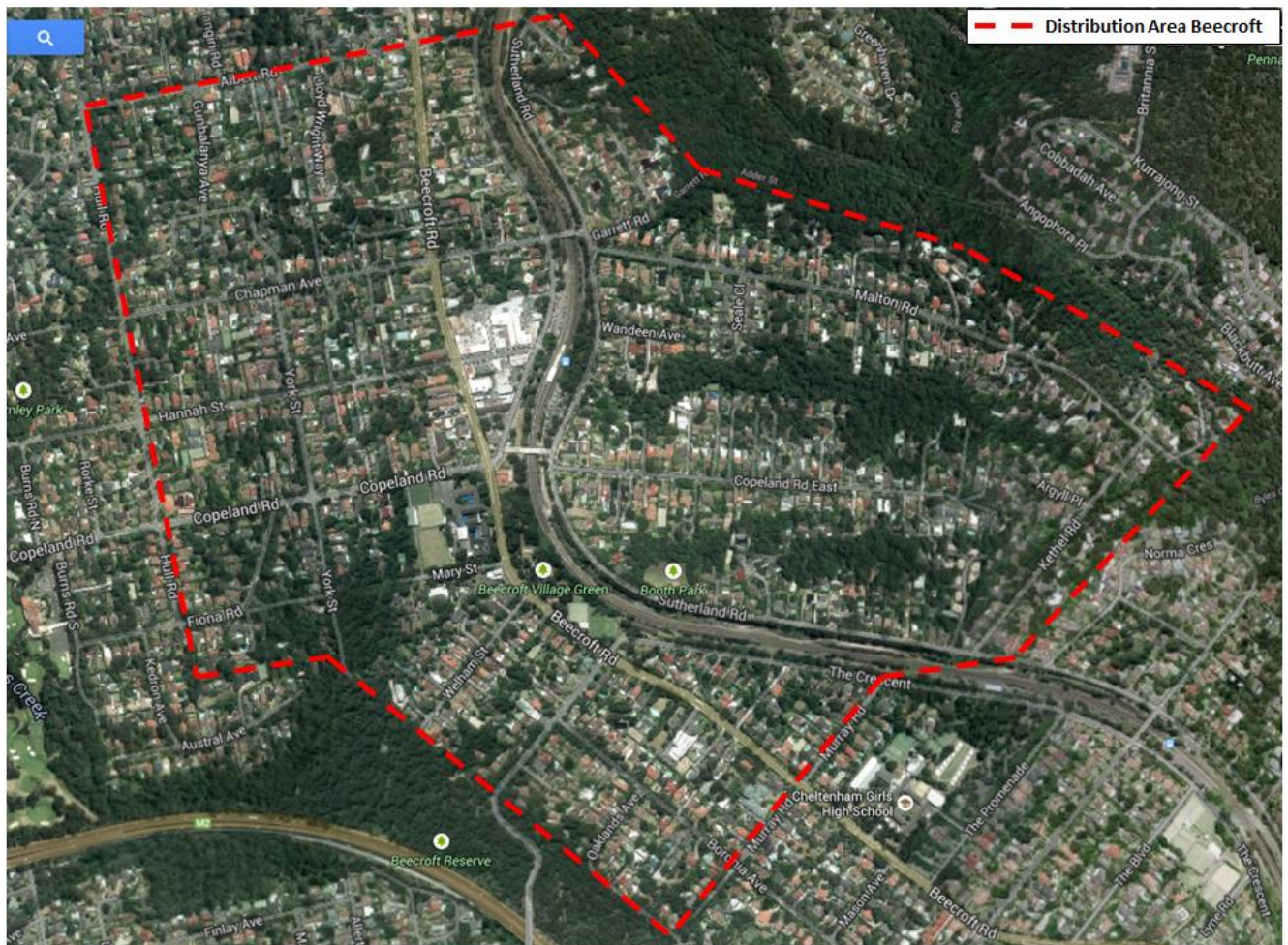


July 2015
RMS 15.316



Privacy Roads and Maritime Services ("RMS") is subject to the Privacy and Personal Information Protection Act 1998 ("PPPI Act") which requires that we comply with the Information Privacy Principles set out in the PPPI Act. All information in correspondence is collected for the sole purpose of assisting in the assessment of this proposal. The information received, including names and addresses of respondents, may be published in subsequent documents unless a clear indication is given in the correspondence that all or part of that information is not to be published. Otherwise RMS will only disclose your personal information, without your consent, if authorised by the law. Your personal information will be held by RMS at 27-31 Argyle Street, Parramatta NSW 2150. You have the right to access and correct the information if you believe that it is incorrect.

Appendix B – Distribution Area





rms.nsw.gov.au



13 22 13



Customer feedback
Roads and Maritime
Locked Bag 928,
North Sydney NSW 2059

Month 2015
RMS 15.346
ISBN 978-1-925357-89-9