

Changed traffic conditions at Boxsells Lane, Meroo Meadow

The NSW Government is upgrading the Princes Highway between Berry and Bomaderry to improve safety, increase road capacity and improve traffic flow.

What are we doing?

We will be constructing the median on the Princes Highway at the intersection of Boxsells and Lamonds Lane from **Friday 17 September 2021**. During the work there will be no right turn for southbound drivers into Boxsells Lane. **This closure will be in place for up to eight weeks.** Motorists will need to detour via the Meroo Road/Pestells Lane interchange.

The image over the page illustrates the temporary detours.

How will it affect you?

Work in the median will take between up to eight weeks to complete, weather permitting. Existing bus stops will still be in operation until the work is complete. We have consulted with bus companies, emergency services and council, who are aware of the access changes.

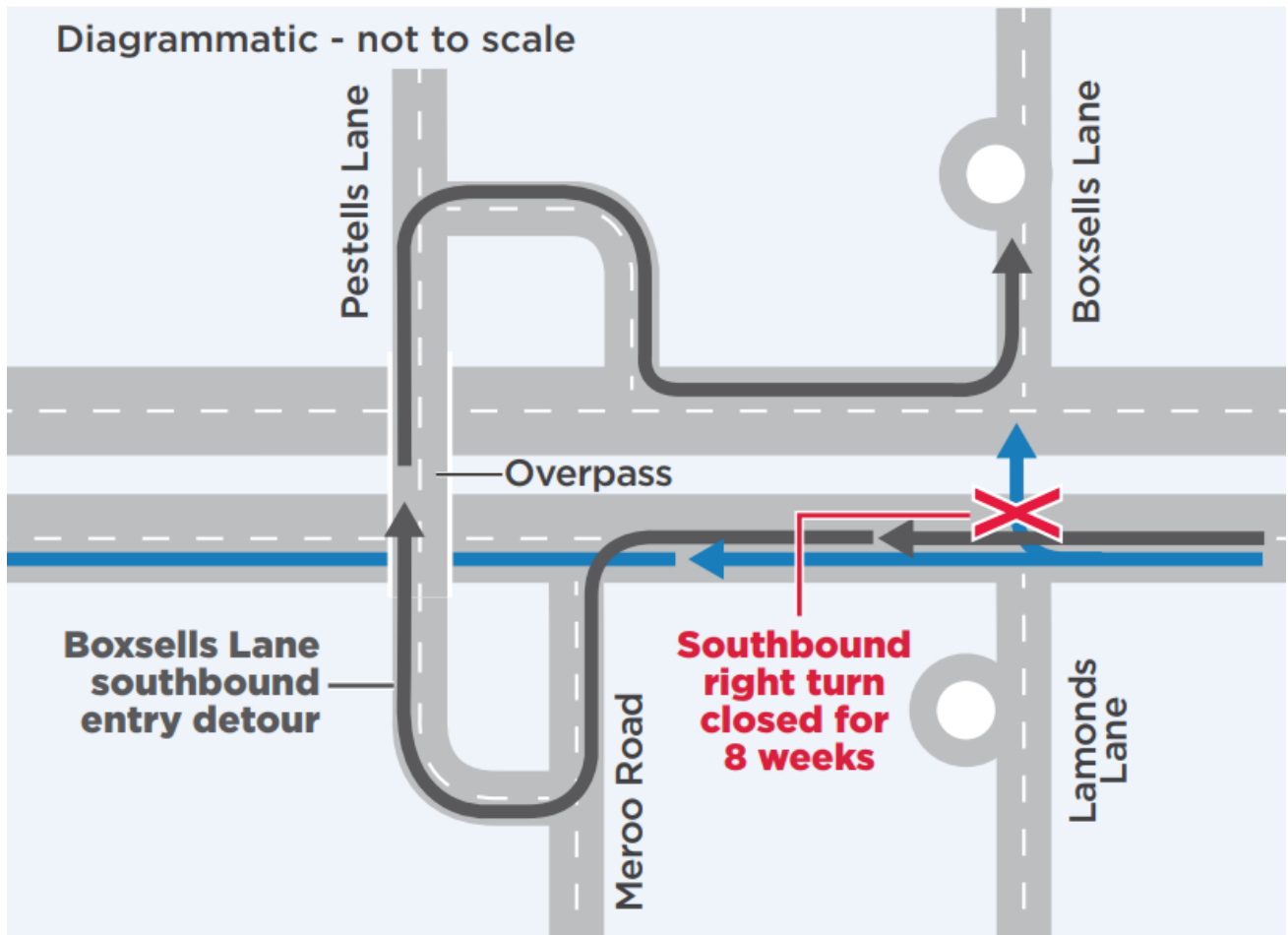
There may be some short traffic stoppages during construction so please follow the directions of traffic controllers and signage.

We will make every effort to minimise disruption during this work. Please keep to speed limits and follow signs and traffic controllers' directions. For the latest traffic updates call 132 701, visit livetraffic.com, or download the Live Traffic App.

Transport for NSW thanks the community for their patience during this time.

Boxsells Lane access

Diagrammatic - not to scale



Contact

If you have any questions, please contact the project team on 1800 506 976 or BerrytoBomaderryUpgrade@DSWJV.com.au

For more information on our projects, visit roads-maritime.transport.nsw.gov.au



If you need help understanding this information, please contact the Translating and Interpreting Service on 131 450 and ask them to call us on 1800 506 976