

Intersection improvements at Bigge Street and the Hume Highway, Warwick Farm

Community Consultation Report

January 2016



THIS PAGE LEFT INTENTIONALLY BLANK

Executive summary

This report provides a summary of the community and stakeholder consultation carried out by Roads and Maritime Services in May and September 2015 on intersection improvements at Bigge Street and the Hume Highway, Warwick Farm.

The NSW Government is funding this \$9 million proposal as part of its \$246 million Pinch Point Program which aims to reduce congestion, improve traffic flow and maintain travel times on Sydney's main roads, particularly during weekday peak periods.

Roads and Maritime initially sought feedback from stakeholders in May 2015 for the proposed work which included:

- Widening the western side of Bigge Street to provide an additional northbound lane, which would then allow for:
 - Two dedicated right turn lanes onto the Hume Highway for eastbound vehicles
 - A dedicated left turn lane onto the Hume Highway for westbound vehicles.
- Providing a dedicated left turn lane and shoulder on the Hume Highway into Bigge Street for southbound vehicles.

As a result of changes in the design, Roads and Maritime sought further feedback in September 2015 about proposed parking changes to increase the intersection capacity including:

- Installing a "No Stopping" zone in the existing clearway on the southern side of the Hume Highway between Goulburn Street and Bigge Street – this would not result in a loss of parking spaces
- Extending the existing "No Stopping" zone on the western side of Bigge Street about 30 metres south of its previous position, resulting in a loss of four parking spaces.

We received comments from four people in May and from Liverpool City Council and one person in September. Two comments were about the loss of parking, one was about property adjustments, one was about sight lines on the Hume Highway and another was about the potential for increased traffic. Two people were in favour of the proposal, two were neutral and two were against it. Council supported the proposal if all approvals were obtained and consultation was carried out.

We will provide responses to all feedback through this report and directly to the five people and council that made comments.

We would like to take this opportunity to thank everyone who provided comments on this proposal.

Roads and Maritime has considered all feedback and will proceed with the proposed intersection improvements at Bigge Street and the Hume Highway, Warwick Farm.

Construction is expected to start in mid-2016 and we will keep the community updated as this project progresses.

Contents

Executive summary.....	1
1. Introduction.....	3
1.1. Background	3
1.2. The proposal.....	3
2. Consultation approach	4
2.1 Consultation objectives	4
2.2 How consultation was done	4
3. Consultation summary	4
3.1. Overview.....	4
4. Recommendations.....	8
5. Next steps.....	8
Appendix A – Have your say May 2015	9
Appendix B – May 2015 distribution area.....	11
Appendix C – Have your say September 2015.....	12
Appendix D – September 2015 distribution area	14

Figures and tables

Table 1 – How consultation was done	4
Table 2 – Consultation overview.....	5

1. Introduction

1.1. Background

The Hume Highway is the main State road between Sydney and the Victorian border. Bigge Street is a north-south local road connecting the Liverpool business area with the Hume Highway.

The intersection of Bigge Street and the Hume Highway is surrounded by high-density residential and commercial buildings. There is a high:

- Demand for motorists wanting to turn left from the Hume Highway into Bigge Street, which impacts on the capacity of the highway
- Volume of motorists turning from Bigge Street onto the Hume Highway, which requires longer green light time, which then creates more congestion on the highway.

Roads and Maritime is proposing to improve the intersection of Bigge Street and the Hume Highway, Warwick Farm to help improve traffic flow, road safety and maintain reliable travel times.

1.2. The proposal

Roads and Maritime is proposing to widen Bigge Street and the Hume Highway and make other changes to improve the intersection. The objectives of the intersection improvement proposal are:

- Improving traffic flow along the Hume Highway corridor
- Increasing efficiency and safety of the Bigge Street and Hume Highway intersection
- Reducing the risk of rear end and overall crashes
- Reducing queues and waiting times for vehicles turning from Bigge Street onto the Hume Highway eastbound and westbound.

The work would involve adding an extra lane on Bigge Street and one on the Hume Highway to increase capacity and reduce delays. The proposed work includes:

- Widening the western side of Bigge Street to provide an additional northbound lane to create:
 - Two dedicated right turn lanes into the Hume Highway for eastbound vehicles
 - A dedicated left turn lane onto the Hume Highway for westbound vehicles.
- Providing a dedicated left turn lane and shoulder on the southern side of the Hume Highway into Bigge Street for southbound vehicles.

To increase capacity, we are also proposing to:

- Install a "No Stopping" zone in the existing clearway on the southern side of the Hume Highway between Goulburn Street and Bigge Street, this would not result in a loss of parking spaces
- Extend the existing "No Stopping" zone on the western side of Bigge Street about 30 metres south of its previous position, resulting in a loss of four parking spaces.

2. Consultation approach

2.1 Consultation objectives

We consulted with the community during May and September 2015 to:

- Seek comment, feedback, ideas, and suggestions for us to consider when developing the proposal, including consultation outcomes into the environmental impact assessment known as a review of environmental factors
- Build a database of interested and concerned community members with whom we can continue to engage during the proposal's development.

2.2 How consultation was done

We sought feedback between 6 May 2015 and 20 May 2015 and again between 11 September 2015 and 25 September 2015. Community members and stakeholders were encouraged to provide their feedback, and make comments via mail, email or phone contact with the project team. Our key consultation tools were:

Table 1 – How consultation was done

Have your say letter – May 2015 (Appendix A)	<ul style="list-style-type: none">• Delivered to 800 residents in Warwick Farm and Liverpool (Appendix B).• Emailed to emergency services, schools, large businesses, hospitals and community groups in the local area
Have your say letter – September 2015 (Appendix C)	<ul style="list-style-type: none">• Delivered to 1300 residents in Warwick Farm and Liverpool (Appendix D)• Emailed to emergency services, schools, large businesses, hospitals and community groups in the local area
Website	Details of the proposal were provided on Roads and Maritime Services website and also the NSW Government's community consultation website.

3. Consultation summary

3.1. Overview

Roads and Maritime received feedback from five people and Liverpool City Council about six matters. Two submissions supported the proposal, two were opposed and two did not indicate their support or opposition. Two submissions were about the loss of parking, one was about property adjustments, one was about sight lines on the Hume Highway and another was about the potential for increased traffic.

Concerns and suggestions not within Roads and Maritime's area of responsibility have been forwarded to the relevant authority.

Table 2 – Consultation overview

Category	Matters raised	Roads and Maritime's response
Parking 2 comments	Strongly supports the project but disagrees with the loss of four parking spaces	The intersection of Bigge Street and the Hume Highway experiences significant traffic congestion predominantly caused by the high number of right turning vehicles from Bigge Street onto the Hume Highway. The need for considerable green light time for the Bigge Street approach delays motorists traveling straight through the intersection on the highway.
	Will the four parking spaces that will be lost in Bigge Street be relocated?	The expected improvements in traffic flow and reduced congestion on Bigge Street are considered significant, particularly in the afternoon peak period. These improvements are considered to outweigh the loss of four parking spaces. Roads and Maritime has forwarded your point about inadequate on-street parking in the area to Liverpool City Council.
Property adjustments (Parking on premises) 1 comment	Will the parking space within 20 Hume Highway be retained when the retaining wall is moved closer to the house as part of the work?	Roads and Maritime negotiates property adjustments with individual owners on a case by case basis.
Sight-line 1 comment	Trees on the nature strip outside 18 Hume Highway obstruct the view of motorists when they turn left from Browne Parade onto the Hume Highway	Brown Parade and the footpath on the Hume Highway are under the care and control of Liverpool City Council. Your point on sight distance has been referred to Liverpool City Council for its consideration and action.
Approvals 1 comment	All necessary approvals should be in place before installation of the proposed parking restrictions.	Roads and Maritime will ensure all approvals are in place before starting construction work.
Traffic 1 comment	This project will increase the level of traffic operating through the Liverpool CBD, in particular past the public transport	The objectives of the proposed roadwork upgrade are reduce congestion to: <ul style="list-style-type: none"> • Improve traffic flow on Bigge Street and the Hume Highway by providing additional turning lanes to increase the traffic capacity through the intersection • Improve the efficiency and safety of the Bigge Street and Hume Highway

Category	Matters raised	Roads and Maritime's response
	<p>interchange.</p> <p>Public bus services are severely delayed while operating through Liverpool CBD.</p>	<p>intersection by reducing the risk of rear end crashes</p> <ul style="list-style-type: none"> • Reduce queueing and waiting times for: <ul style="list-style-type: none"> • Vehicles turning left and right from Bigge Street onto the Hume Highway • Through traffic along the Hume Highway • Vehicles turning left from the Hume Highway onto Bigge Street. <p>In October 2014, Liverpool City Council carried out a traffic study for the Liverpool CBD, which includes Bigge Street. The improvements associated with Bigge Street would have been considered in the context of that report. In addition, Council is making significant changes to the CBD road network and any improvement to the remainder of Bigge Street would be managed by Council.</p> <p>This comment has been referred to Liverpool City Council for its consideration and action.</p>
Noise	<p>The upgrade would bring the highway closer to private homes and result in construction noise.</p>	<p>A Construction Noise and Vibration Management Plan would be in place before we start building work on this site.</p> <p>The construction program would schedule noisier work during normal construction hours being from 7am to 6pm between Mondays and Fridays and from 8am to 12pm on Saturdays. To minimise disruption to daily traffic and disturbance to surrounding residents and businesses, it may be necessary to carry out some work outside these hours, including at night.</p> <p>Roads and Maritime will notify the community and stakeholders of all construction work at least five days before work starts on site.</p> <p>Where activities are in close proximity to residences for extended periods, temporary hoarding and screens would be installed. Compressors, generators, pumps and any other fixed plant would be located as far as possible from residences.</p> <p>Roads and Maritime will continue to keep the community updated on construction activities.</p>

Category	Matters raised	Roads and Maritime's response
		<p data-bbox="819 233 1890 363">A noise impact assessment was carried out for the proposed project. The result showed there would be less than 1 decibel increase in noise once the project was operational. This is attributed to the travel lane being about 4.5 metres closer to residential properties than it currently is.</p> <p data-bbox="819 403 1890 427">Typically any increase in noise below two decibels is not noticeable.</p>

4. Recommendations

Roads and Maritime would like to thank everyone who took the time to consider our proposal and provide feedback.

We have considered the comments received and decided to proceed with the project as proposed.

5. Next steps

Roads and Maritime will finalise the detailed design and environmental assessment for this project

Construction is due to start in mid-2106 and Roads and Maritime will continue to keep the community informed of the project as it progresses.

Appendix A – Have your say May 2015

Have Your Say



Transport
Roads & Maritime
Services

MAY 2015

Proposal for intersection improvements at Bigge Street and the Hume Highway, Warwick Farm

This proposal is part of the NSW Government's \$246 million Pinch Point Program, which aims to improve traffic flow and reduce travel times on Sydney's main roads particularly during weekday periods.

Roads and Maritime Services is seeking community and stakeholder feedback by **Wednesday 20 May 2015** on a proposal to widen Bigge Street and the Hume Highway.

The proposed work includes:

- Widening the western side of Bigge Street to provide an additional northbound lane to create:
 - two right turn lanes into the Hume Highway for eastbound vehicles
 - a left turn lane onto the Hume Highway for westbound vehicles
- Providing a left turn lane and shoulder on the Hume Highway into Bigge Street for southbound vehicles

The proposal is expected to:

- Improve traffic flow on Bigge Street and the Hume Highway by providing additional turning lanes to increase the traffic volume through the intersection
- Improve the efficiency and safety of the Bigge Street/ Hume Highway intersection by reducing the risk of rear end crashes
- Reduce queuing and waiting times for:
 - vehicles turning left and right from Bigge Street onto the Hume Highway,
 - through traffic along the Hume Highway and
 - vehicles turning left from Hume Highway onto Bigge Street

We have provided a diagram to help better explain our proposal. We welcome your views on the proposal and would appreciate your feedback by **Wednesday 20 May**. Please send your written comments to our delivery partner:

DownerMouchel
Attention: Bigge Street, Warwick Farm
PO Box 6465
North Ryde NSW 2113

Or contact DownerMouchel on 1800 332 660 or email enquiries_nsw@downermouchel.com.

For further enquiries: Downer Mouchel

T 1800 332 660 | E enquiries_nsw@downermouchel.com

For information on scheduled road work, visit www.livetraffic.com
or outside business hours call the Transport Management Centre on 132 701

Roads and Maritime will consider feedback in finalising its decision about this proposal and will continue to keep the community and stakeholders updated.



Translating and Interpreting Service

If you need an interpreter, please call TIS National on **131 450** and ask them to call DownerMouchel on **1800 332 660**.

Arabic

إذا كنتم بحاجة إلى مترجم، الرجاء الاتصال بخدمة الترجمة الخطية والشفوية (TIS National) على الرقم

131 450 ، و الطلب منهم الاتصال بوكالتكم DownerMouchel على الرقم 1800 332 660

Cantonese

若你需要口譯員，請致電 **131 450** 聯絡翻譯和口譯服務署 (TIS National)，要求他們致電 1800 332 660 聯絡 DownerMouchel。

Mandarin

如果你需要口译员，请致电 **131 450** 联系翻译和口译服务署 (TIS National)，要求他们致电 1800 332 660 联系 DownerMouchel。

Greek

Αν χρειάζεστε διερμηνέα, παρακαλείστε να τηλεφωνήσετε στην Υπηρεσία Μετάφρασης και Διερμηνείας (Εθνική Υπηρεσία TIS) στο **131 450** και ζητήστε να τηλεφωνήσουν DownerMouchel στο 1800 332 660.

Russian

Если вам нужен переводчик, то позвоните в Службу письменного и устного перевода (TIS National) по номеру **131 450** и скажите переводчику, что вам нужно позвонить в DownerMouchel по номеру 1800 332 660.

Korean

통역사가 필요하시면 번역통역서비스 (TIS National) 에 **131 450** 으로 연락하여 이들에게 1800 332 660 번으로 DownerMouchel 에 전화 하도록 요청하십시오.

Vietnamese

Nếu cần thông ngôn viên, xin quý vị gọi cho Dịch Vụ Thông Phiên Dịch (TIS Toàn Quốc) qua số **131 450** và nhờ họ gọi cho DownerMouchel qua số 1800 332 660.

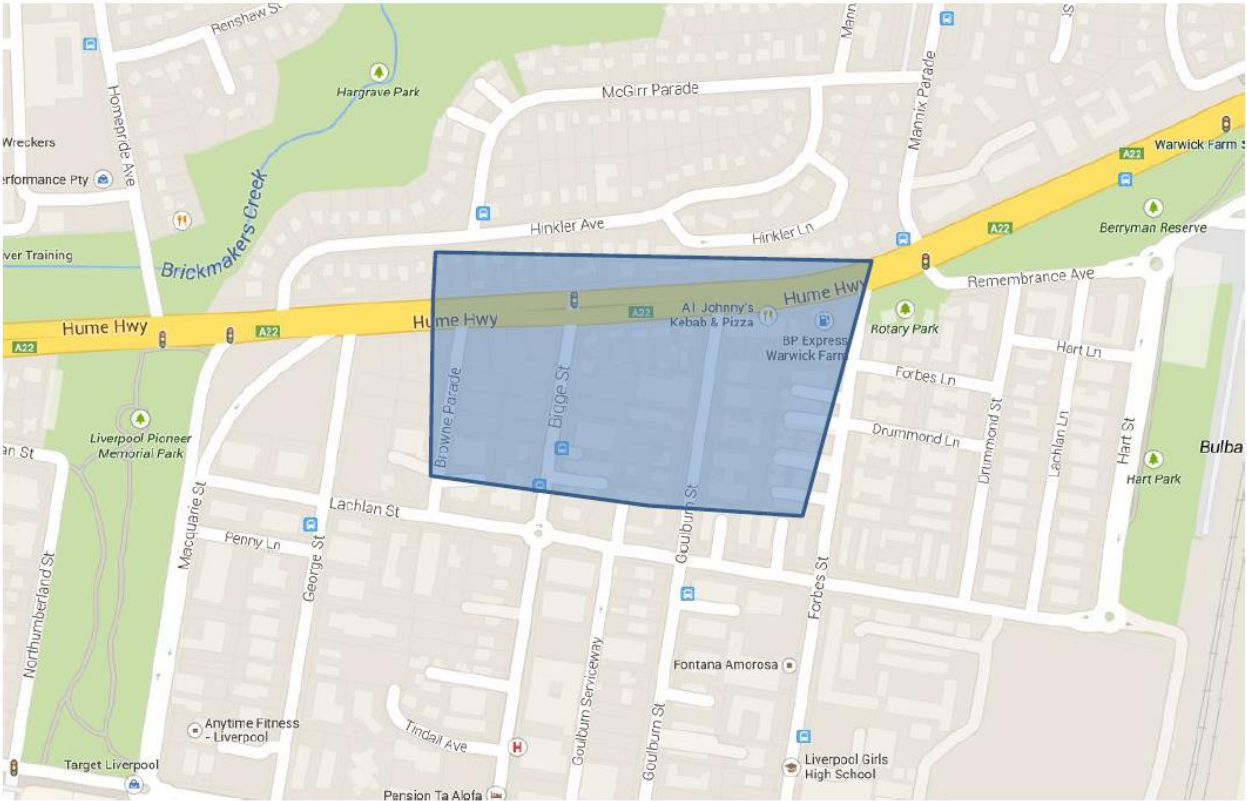
2

For further enquiries: Downer Mouchel

T 1800 332 660 | E enquiries_nsw@downermouchel.com

For information on scheduled road work, visit www.livetraffic.com or outside business hours call the Transport Management Centre on **132 701**

Appendix B – May 2015 distribution area



Appendix C – Have your say September 2015



September 2015

Have your say – proposed parking changes on Bigge Street and the Hume Highway, Warwick Farm

The NSW Government is funding a \$9 million proposal as part of its \$246 million Pinch Point Program which aims to reduce congestion, improve traffic flow and maintain travel times on Sydney main roads, particularly during weekday peak periods.

Roads and Maritime Services has previously sought community feedback on this proposal, however we are seeking further comments because of a change to the design. As part of the proposed upgrade, Roads and Maritime Services is looking to change parking arrangements including:

- Installing a "No Stopping" zone in the existing clearway on the southern side of the Hume Highway between Goulburn Street and Bigge Street, this would not result in the loss of parking spaces
- Extending the existing "No Stopping" zone on the western side of Bigge Street about 30 metres south, this would result in the loss of four parking spaces.

We have included a map to help explain the proposed parking changes.

Proposed project benefits

The Pinch Point Program project is expected to:

- Improve traffic flow on Bigge Street and the Hume Highway by providing additional turning lanes to increase the traffic volume through the intersection
- Aims to reduce delays manage congestion and maintain travel times on Sydney's main roads particularly during week day peak periods.

We invited the community and stakeholders to provide feedback on the proposal for intersection improvements at Bigge Street and the Hume Highway in May 2015. Comments were generally in support of the proposal.

How can you give feedback?

We encourage you to send us your comments by **Friday 25 September 2015** to:

C/- DownerMouchel
Attention: Bigge Street, Warwick Farm
PO Box 6465
North Ryde NSW 2113

Or email DownerMouchel on enquiries_nsw@downermouchel.com

What happens next?

We will prepare a Community Consultation Report to capture all feedback provided by the community and stakeholders and our responses to these comments for both rounds of consultation. Roads and Maritime will consider feedback in finalising its decision about the proposal and will continue to keep the community updated as the proposal progresses.

Contact

If you have any questions, please contact our delivery partner DownerMouchel on 1800 332 660 or email enquiries_nsw@downermouchel.com or for more information on our projects, visit rms.nsw.gov.au



Map showing proposed improvements and parking changes on Bigge Street and the Hume Highway



Translating and Interpreting Service

If you need an interpreter, please call TIS National on **131 450** and ask them to call DownerMouchel on **1800 332 660**.

Arabic

إذا كنتم بحاجة إلى مترجم، الرجاء الاتصال بخدمة الترجمة الخطية والشفوية (TIS National) على الرقم **131 450** ، و الطلب منهم الاتصال بوكنتكم DownerMouchel على الرقم 1800 332 660

Cantonese

若你需要口譯員，請致電 **131 450** 聯絡翻譯和口譯服務署 (TIS National)，要求他們致電 1800 332 660 聯絡 DownerMouchel。

Mandarin

如果你需要口译员，请致电 **131 450** 联系翻译和口译服务署 (TIS National)，要求他们致电 1800 332 660 联系 DownerMouchel。

Greek

Αν χρειάζεστε διερμηνεία, παρακαλείστε να τηλεφωνήσετε στην Υπηρεσία Μετάφρασης και Διερμηνείας (Εθνική Υπηρεσία ΤΙΣ) στο **131 450** και ζητήστε να τηλεφωνήσουν DownerMouchel στο 1800 332 660.

Russian

Если вам нужен переводчик, то позвоните в Службу письменного и устного перевода (TIS National) по номеру **131 450** и скажите переводчику, что вам нужно позвонить в DownerMouchel по номеру 1800 332 660.

Korean

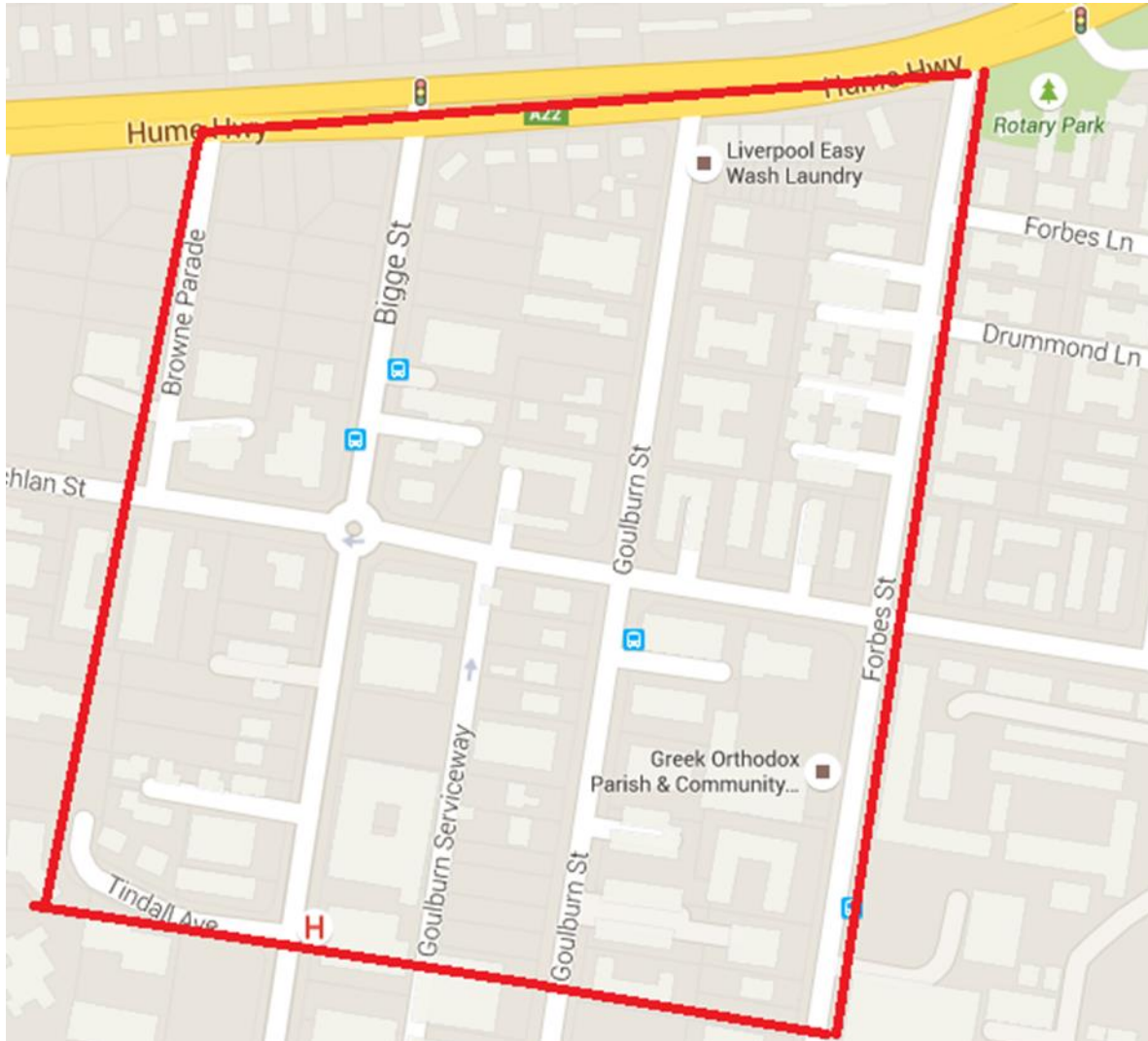
통역사가 필요하시면 번역통역서비스 (TIS National) 에 **131 450** 으로 연락하여 이들에게 1800 332 660 번으로 DownerMouchel 에 전화 하도록 요청하십시오.


Vietnamese

Nếu cần thông ngôn viên, xin quý vị gọi cho Dịch Vụ Thông Phiên Dịch (TIS Toàn Quốc) qua số **131 450** và nhờ họ gọi cho DownerMouchel qua số 1800 332 660.




Appendix D – September 2015 distribution area



 rms.nsw.gov.au

 13 22 13

 Customer feedback
Roads and Maritime
Locked Bag 928,
North Sydney NSW 2059

January 2016
RMS 15.646
ISBN: 978-1-925421-52-1